



Rural Telementoring Training Center (RTTC)

October 1, 2024

Suyen Schneegans, MA
Training & Technical Assistance Lead
National RTTC

Laura Potter, MSW, LCSW-S
Training & Technical Assistance Facilitator
National RTTC

Paula Winkler, MEd
South Central AHEC Board Member
UT Health San Antonio

BJ Biskupiak, BA
Asthma Control Program Manager
Montana Department of Public Health &
Human Services

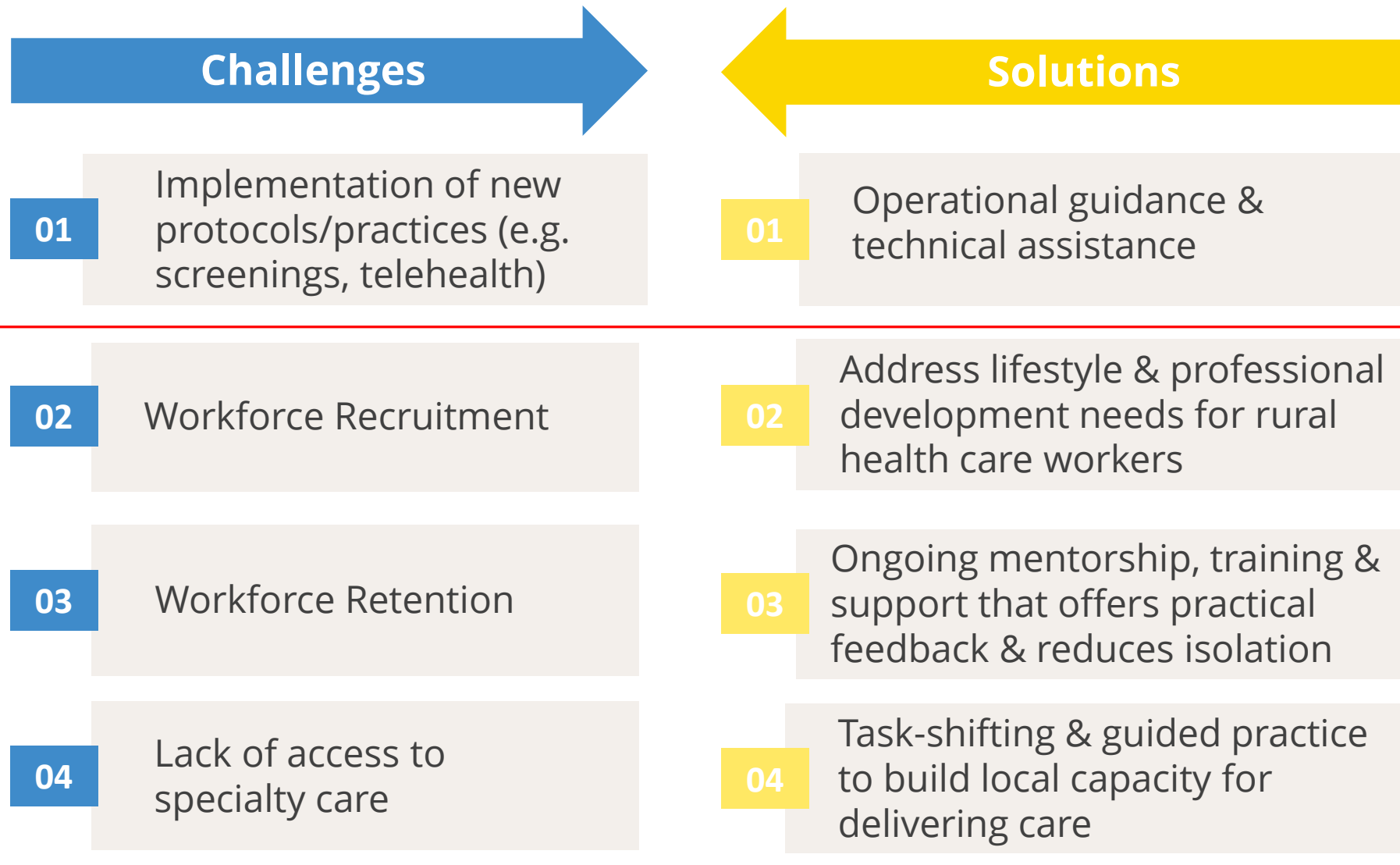
What is telementoring?

Use of **telecommunication technology** to deliver training, education, and support that builds healthcare capacity

Shares **best practices** with rural and remote areas and increases the **capacity** of the health workforce



What solutions does Telementoring offer?



Why is a national rural telementoring training center needed?

- Rural populations have **limited access** to care
- Lack of solid evidence base or **common data elements** for measuring quality
- Need for **strong evidence** based on standardized quality measures
- **Tailored** training and technical assistance supports **replicability and sustainability**



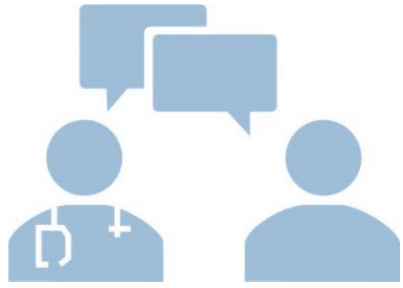
What we do

- **Training, support, and technical assistance** for **implementing, expanding, and evaluating** telementoring programs that improve:
 - *both* disease specific **clinical practice** that meets rural and underserved population clinical needs
 - *and* for career and **workforce development** and training that mitigates rural health care workforce shortages
- Services are **not** disease-, specialty- or discipline-specific
- Our focus is **rural and remote America**

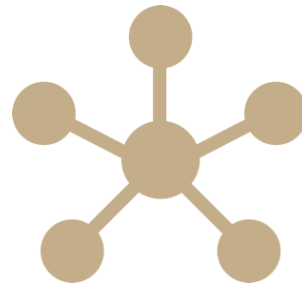




Laura Potter, MSW, LCSW-S
Training & Technical Assistance Facilitator



**One-on-One
Consultation**



ECHO



**Adapted Community
Health Club**



Webinars



**Online Modules
and Curricula**



Podcasts

6 Telementoring Models

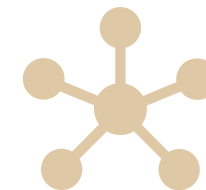
Telementoring - **One-on-one consultation**



Phone or video conferencing for one-on-one consultation between specialists and health care workers.

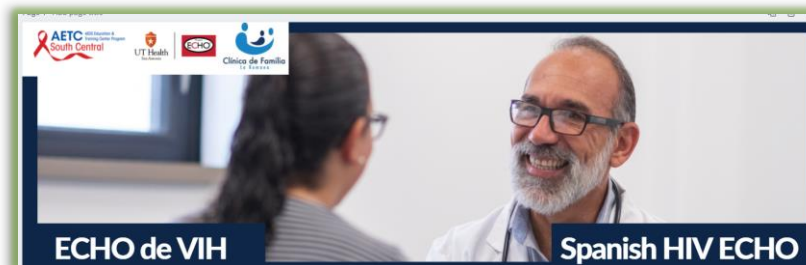
Learning Partner Example: Screen, Treat, Or Prevent Hepatitis C Virus and Hepatocellular Carcinoma (**STOP HCV-HCC**)





Telementoring - **ECHO**

Hub-and-spoke model using videoconferencing to connect a team of subject-matter experts with community-based health care workers.





Telementoring - **Adapted Community Health Clubs**

Peer-to-peer support and learning through facilitated health clubs consisting of health care workers who meet regularly to build competencies and to discuss health care issues.

Learning Partner Examples: Oklahoma State University Area Health Education Centers (AHEC)

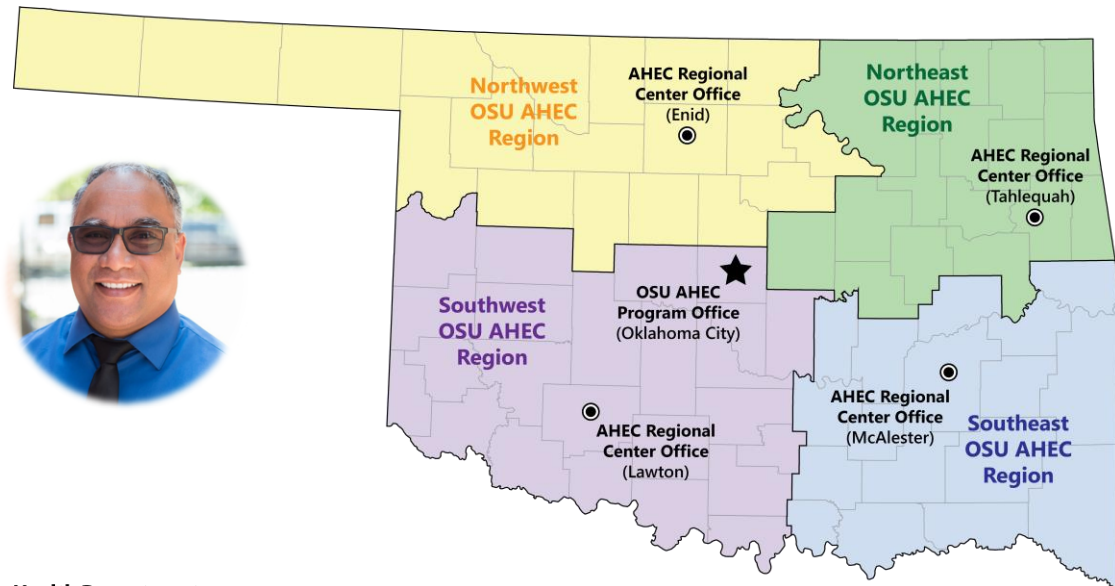
Testimonial

“ Participating in this CHW program aligns perfectly with my passion for promoting health education and improving access to care in underserved communities. I am extremely eager to learn from the experts and gain hands-on experience that will allow me to make a positive impact as a Community Health Worker.



”

Terry Mote
Garfield County Health Department
Enid, Oklahoma





Telementoring Example - **Webinars**

Live audiovisual presentations delivered by an individual or panel with a discussion & interactive question & answer component.

Learning Partner Example: South Texas Oral Health Network (STOHN)





Telementoring - **Online Modules & Curricula**

Self-paced learning via online modules and slides with or without audio.

Learning Partner Example: UT Health San Antonio School of Nursing

Foster Care Expert Learning Series



Welcome to Foster Care Expert Learning Series





Telementoring Example - Podcasts

Audio (or audio with visual enhancements) broadcasts distributed through the Internet and able to be consumed via platforms such as web pages and handheld devices.

Learning Partner: Montana Department of Public Health & Human Services



Telementoring Learning Partner: **Podcasts**





Paula Winkler, MEd
South Central AHEC Board Member



In the beginning...

**Professionally-training Environmental
Ambassadors for Community Health
(PEACHES) Project**

Overview

Partnered with Family & Community Medicine, UT Health San Antonio

- 2005 Grant from EPA to train “Promotoras” in south Texas on the research of “Asthma Triggers in the Home”
- Elements of the training project:
 - Increase awareness of environmental asthma triggers common in the home
 - Promotoras conduct in-home assessments and consult with families on results
 - Recommend home adjustments to decrease asthma triggers
 - Examples:
 - Remove scented candles and plug ins,
 - Smoke cigarettes outside,
 - Use vinegar solution for cleaning vs. commercial cleaning liquids,
 - Discontinue scented detergents for clothes washing, etc.



Fast Forward to 2024

- Promotoras/Community Health Workers currently certified through the State of Texas, Department of Health and Human Services
- ECHO development by UNM; connectivity increased
- Pandemic increased need for respiratory education outreach
- Rural Telementoring Training Center (RTTC) connects nationally
- Montana connects with RTTC
- RTTC connects Montana to Texas Asthma Outreach Project



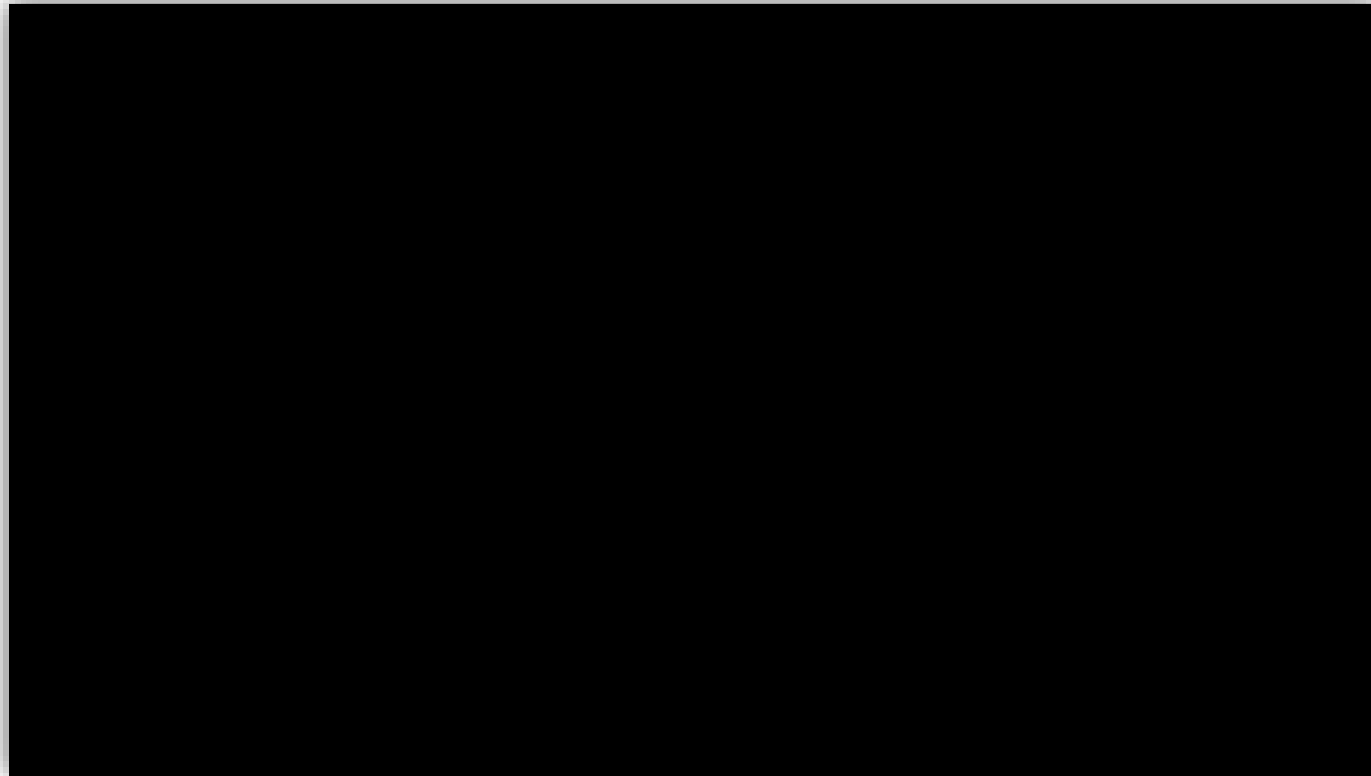
CHW Training Videos





Telementoring Example - **Online Modules & Curricula**

Learning Partner Example: Montana Department of Public Health & Human Services & South-Central Area Health Education Centers





BJ Biskupiak, BA
Asthma Control Program Manager

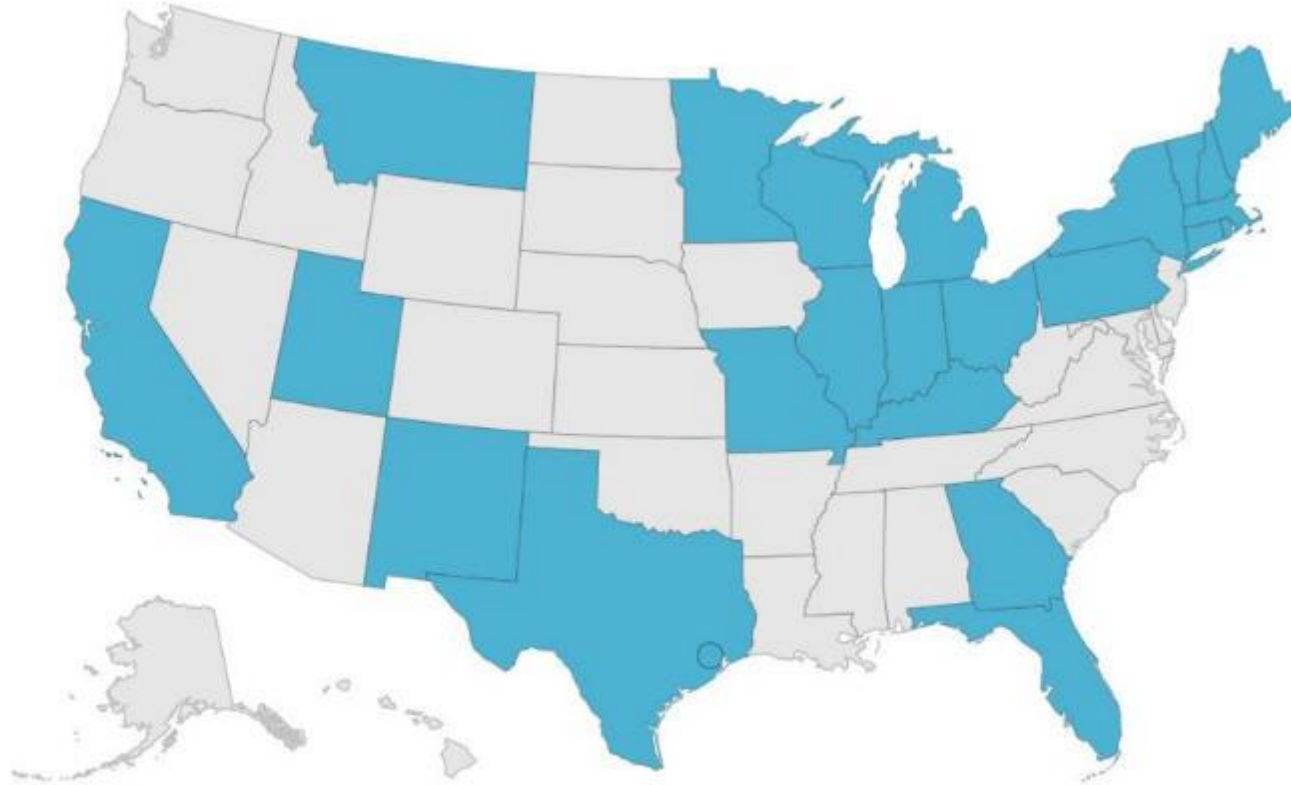
Montana Asthma Control Program – RTTC – AHEC Partnerships

Supporting Community Health Workers and Rural Healthcare Partners



DEPARTMENT OF
**PUBLIC HEALTH &
HUMAN SERVICES**

NACP Funded Asthma Control Programs



Territories **PR**



DEPARTMENT OF
PUBLIC HEALTH &
HUMAN SERVICES



EXHALE

Education

on asthma self-management

X-tinguishing

smoking and exposure to secondhand smoke

Home

visits for trigger reduction and asthma self-management education

Achievement

of guidelines-based medical management

Linkages

and coordination of care across settings

Environmental

policies or best practices to reduce asthma triggers from indoor, outdoor or occupational sources



What is the Montana Asthma Control Program (MACP)?

Established in 2007

Improving the quality of life for Montanans with asthma

4 competitive grants from the National Asthma Control Program

2009-2014 | 2014-2019 | 2019-2024 | 2024-2028



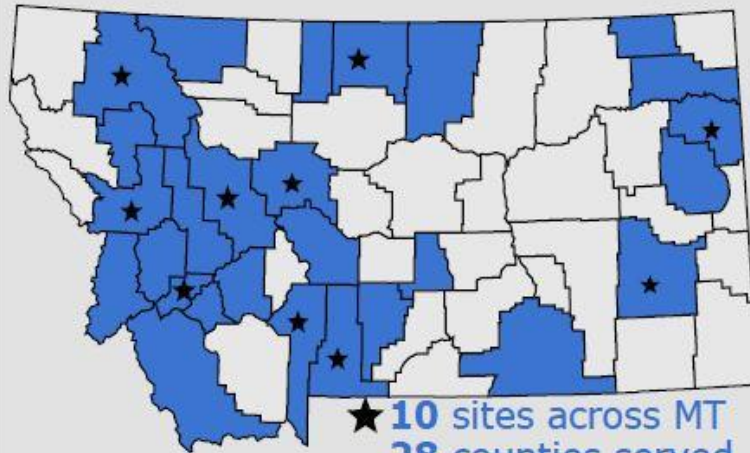
DEPARTMENT OF
PUBLIC HEALTH &
HUMAN SERVICES

Supporting Rural Partners in Montana

Montana Asthma Home Visiting Program (MAP)



Committed to improving asthma one visit at a time.



Blue indicates counties served.



Years



718 Families served



Over 2,900 home visits completed

Participation

59%

41%



Participant Insurance



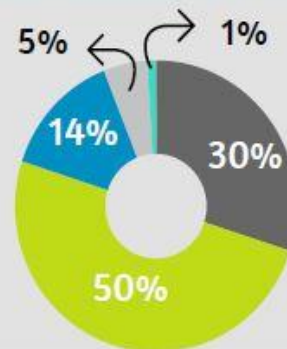
53% Medicaid

38% Private

Average participant age



8 years old



Ages served

0 to 3 years

4 to 11 years

12 to 17 years

18 to 40 years

40 and older



Asthma Quality Improvement

Improve:

- + clinical workflows
billing & revenues
- + staff education about asthma
patient care practices



Welcome to apply:
**Any outpatient care setting or
emergency department**

Visit asthma.mt.gov for
more information or to apply



MONTANA
ASTHMA CONTROL
PROGRAM



DEPARTMENT OF
PUBLIC HEALTH &
HUMAN SERVICES

Free Asthma Education Resources

Asthma Education Materials Order Form

Please check all materials you would like to receive.

All about Asthma/Asthma and Your Child

This two-sided "flip book" has information for children with asthma on one side and their parents on the other. The children's section includes puzzles and games about asthma alongside educational information.

The parent's section covers asthma basics, medications and triggers.

[All about Asthma/Asthma and Your Child.](#)



10 copies

Dusty the Asthma Goldfish Activity Book

A popular resource from the EPA, this activity book engages younger kids as they learn about asthma.

[Dusty the Asthma Goldfish.](#)



10 copies

Help Your Child Gain Control Over Asthma

An EPA publication that reinforces the information included in the MAP curriculum, this would be a great booklet to have a parent or guardian read and complete after you have taught the curriculum to the family.

[Help Your Child Gain Control Over Asthma.](#)



10 copies

Living Well with Asthma Workbook

This 32-page workbook is designed to help adult patients develop and achieve self-management goals. The workbook includes space to develop an AAP, maintain a symptom diary, and create an exercise plan.



10 copies

My Asthma Wallet Card

This pocket-sized wallet card has space to write in the patient's medications, peak flow numbers, and information for their doctor and emergency contact. A mini asthma action plan, it helps patients stay attuned to their important asthma-related information.



10 copies

Asthma Apps Brochure

This brochure provides an overview of popular digital asthma apps and details how apps can help patients self-manage their asthma along with the advice of their healthcare provider. Tips are included on common features and how to choose the right app.



10 copies

Montana Asthma Home Visiting Program Brochure

This brochure provides information about the Montana Asthma Home Visiting Program, including contact information for local programs throughout the state.



10 copies

Asthma Basics for CHWs



Asthma Basics for Community Health Workers in Montana

Self-paced

Enroll Now



DEPARTMENT OF
PUBLIC HEALTH &
HUMAN SERVICES

RTTC & South Central AHEC Partnership



CHW Asthma Basics Course

Curricula Design Guidance

Knowledge Assessments

CHW Asthma Visit Videos



Example CHW Asthma Visit Videos



Impact

12 Course Completions

Minimal Investment

Minimal Upkeep



Thank you!!!

RTTC

UT Health San Antonio
South Central Texas AHEC

Montana AHEC





Suyen Schneegans, MA
Training & Technical Assistance Lead

Still not sure about telementoring?

- Have you identified a health access or health care gap in a rural community?
- What are the effects of that gap?
- Who can you partner with to address it?
- Who can you train, mentor, and support? (Who are the learners?)
- How can you best connect with and support those learners?



What we Provide – **Tools and Training**

- **Training & technical assistance**

- Online content
- Learning kits
- Live trainings
- Tailored support
- Program design, launch, growth

- **Evaluation toolkit**



How to access our TTA Trainings & Tools

Course Catalog

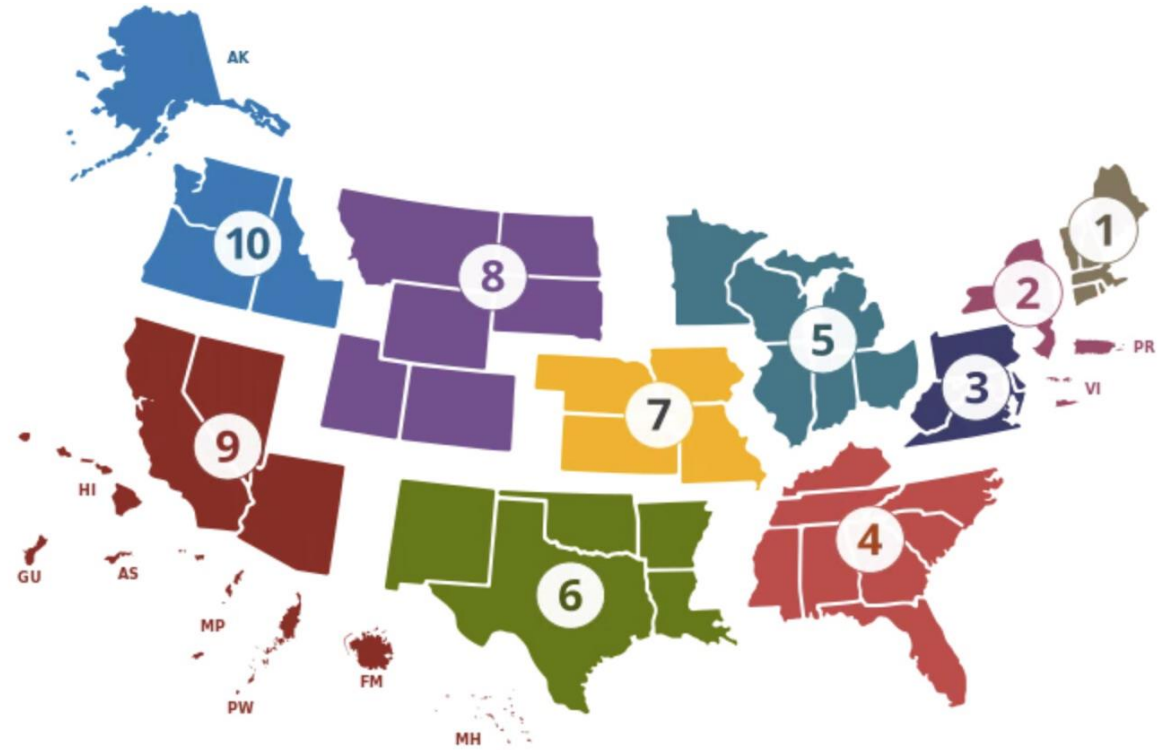
Model Courses

TTA Request Form

Submit Online



10 HRSA Regions

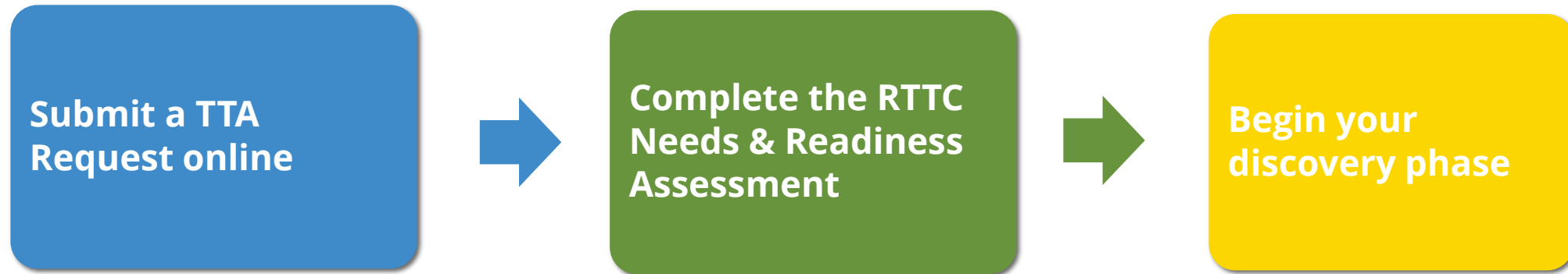


Who can participate?

We are a national program so any organization anywhere in the US can work with us (the telementoring program has to have a **rural connection**, not necessarily the organization)

How to become a Learning Partner

Three easy steps!

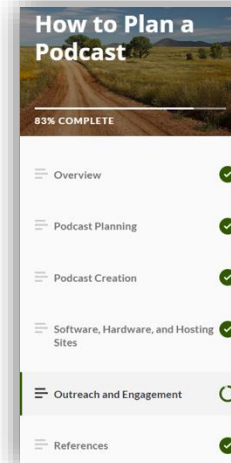


Step 1: Submit a TTA Request Online

Visit our website:



End of course:



Thank you for taking the Podcast course. We hope you found it helpful for planning a telementoring program that improves rural health. Our Training and Technical Assistance (TTA) team is here to provide you with **FREE** ongoing, individualized resources and guidance to support you in designing, implementing, and evaluating your telementoring program. To get started, please fill out the

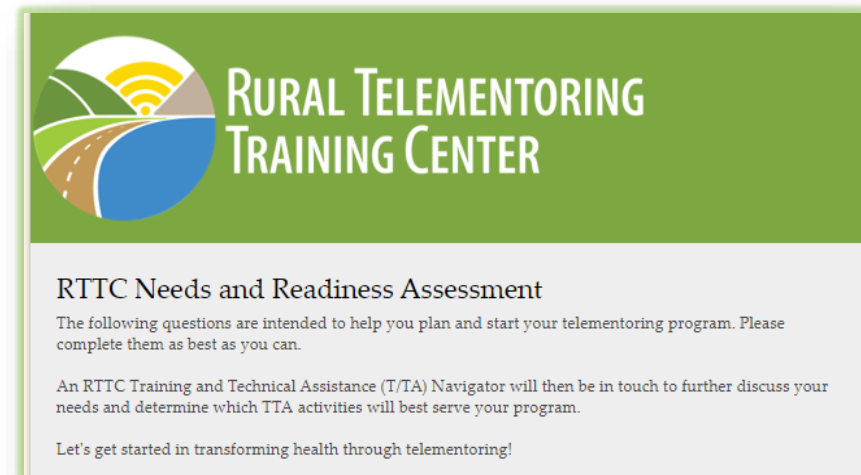
RTTC TTA Request Form and a member of our team will be in touch. We look forward to partnering with you to transform rural health through telementoring.

Link to wufoo form: <https://rttc.wufoo.com/forms/rttc-training-and-technical-assistance-request/>

Click the button below to see references for this course.

Step 2: Complete Needs & Readiness Assessment

- Identify the health gap being addressed
- Determine your population of focus
- Identify existing resource capacity and partners
- Design a successful telementoring modality program

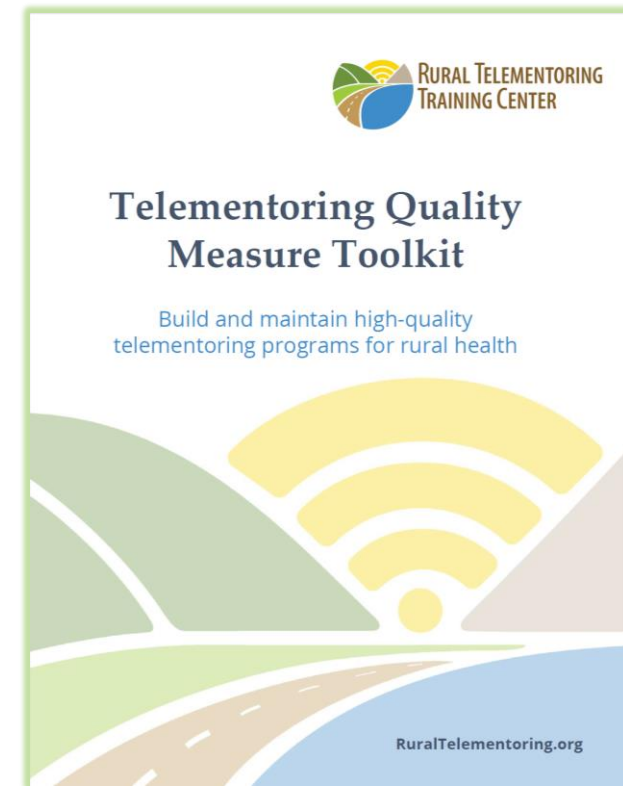


Step 3: Begin your Discovery Phase

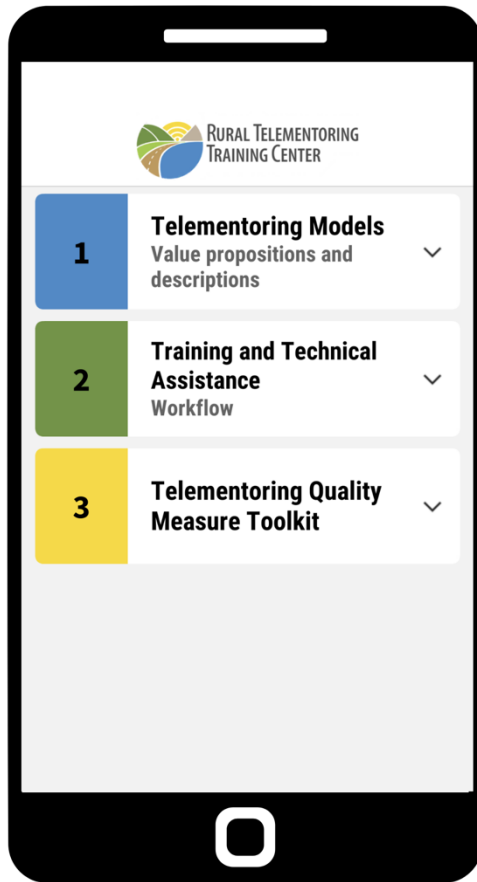


Telementoring Quality Measure Toolkit

- **Quality assurance** tool to assist implementation teams as they develop their telementoring programs
- Provides organizations with the tools needed to **build, maintain, and sustain** successful telementoring programs
- Interpret which aspects of the telementoring program are **strong** and which ones **need improvement**



Resource: RTTC Mobile App



- Introductions to **6 telementoring models**
- Guidance through the **Training and Technical Assistance (TTA) pathway**
- **Rural Telementoring Quality Measure Toolkit** to evaluate your telementoring program(s)



SAVE THE DATE

RURAL TELEMENTORING UNCONFERENCE

ENHANCING RURAL RESILIENCE:
THE INTERSECTION OF CLIMATE,
BEHAVIORAL HEALTH AND WORKFORCE



WEDNESDAY - OCTOBER 16, 2024

10:00AM TO 2:00PM CT

RuralTelementoring.org



2024 RURAL TELEMENTORING UNCONFERENCE PRESENTERS

SUSTAINABILITY IN SHIFTING ENVIRONMENTS



Kari Northeim, PhD, MBA
Assistant Professor
HSC at Fort Worth
School of Public Health



Mona Arora, PhD, MsPH
Assistant Research Professor
The University of Arizona
College of Public Health



Melissa Oden, DHEd, LMSW-IPR, MPH, CHES
Fellow/Immediate Past President
Texas Public Health Association



Russell Hopkins
Director
North East Texas Public
Health District



Hal Zawacki, MPH, MSW
Assistant Regional Director
Region 9
SAMHSA

CONNECTING THREADS OF HEALTH



Aniela Brown, MSW
Trauma Informed Care
Program Director
TACHC



Mercedes Ingram, PhD, LPC
Director, Population Health
University Health



Tara Haskins, DNP, MSN, RN, AHN-BC
Total Farmer Health Director
AgriSafe Network



Humberto Carvalho, MPH
Public Health Advisor
SAMHSA



Jalima Culker, LICSW, LCSW-C, BCD, CCM
Social Science Analyst
SAMHSA



Krishnan Radhakrishnan, MD, PhD, MPH
Physician, Senior Advisor
SAMHSA

Ways to stay connected



RuralTelementoring.org



RTTCinfo@unthscsa.edu



@TeamRTTC



www.linkedin.com/in/rttc



bit.ly/RTTCYouTube

