

Partnering for Health Justice

Frameworks for Action

Ruth Thomas-Squance, MPH, PhD.
Build Healthy Places Network
Rural Health Capital Resource Council, June 11th, 2024



Build Healthy
Places Network

Introduction



Ruth Thomas-Squance, PhD, MPH
Co-Executive Director
Build Healthy Places Network



RHCRC Sprint Session 7



The Build Healthy Places Network

We are the national center at the intersection of **community development and health**, leading a movement to accelerate investments and speed and spread solutions for building healthy and prosperous communities.



Engage



Educate



Synthesize

BHPN's dynamic approach encompasses our **3 Core Strengths:**



Partnerships

Serving as thought partners to national organizations across sectors, emphasizing the critical role of inclusive approaches and supporting anti-racist strategies and community-led models for co-investment.



Platform

Utilizing our robust communications platform to elevate community innovation and build institutional capacity to advance multisector partnerships.



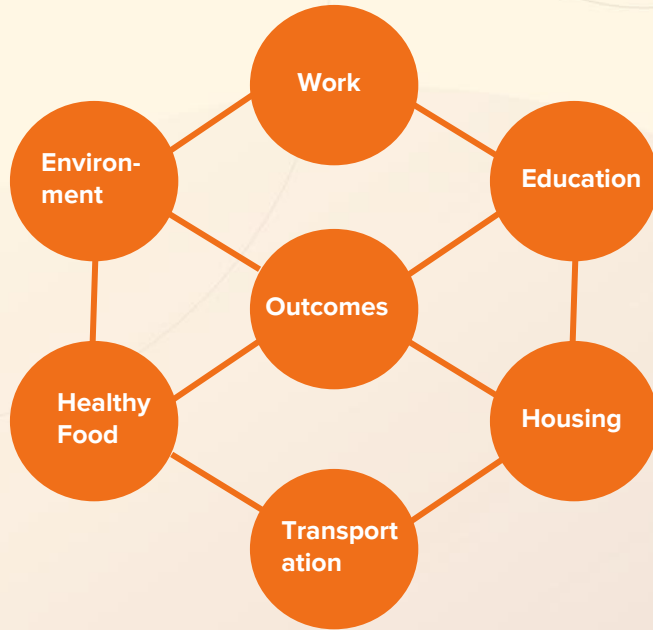
Process

Embracing reflection and accountability to our partners and the field and creating opportunities for feedback and continuous improvement on our resources, their impact and adaptation by practitioners.

Health Happens in Neighborhoods



Systems Thinking Diagram



'A framework for seeing interrelationships rather than things, for seeing 'patterns of change' rather than static 'snapshots.'

- Peter Senge

Adapted from 'Systems Thinking and Race': john a. powell and Connie Cagampang Heller

Vital Conditions for Health & Wellbeing



Thriving
Natural World



Basic Needs for
Health & Safety



Humane
Housing



Meaningful
Work & Wealth



Lifelong
Learning



Reliable
Transportation



Belonging &
Civic Muscle

Urgent services alone, will
not produce thriving.



Source: Milstein, B. et al, Health Affairs, Feb 2023

Partnerships to address drivers of health inequities



Why strategic cross sector partnerships?

- Utilizing informal networks to bridge formal sectors
- Facilitate combined efforts to address the challenges in attracting capital
- Allows for community knowledge to drive solutions
- Creates holistic picture with data across sectors
- Share risk and reward



Build Healthy
Places Network



NATIONAL ASSOCIATION OF
CHRONIC DISEASE DIRECTORS

Promoting Health. Preventing Disease.

Primer: Engaging with Community Development for Health Equity

A partnership between



Overview of Public Health Primer

Build Healthy Places Network (BHPN) and National Association of Chronic Disease Directors (NACDD) held a *thought leader roundtable* gathering national, state, and local leaders to bridge a way for public health and community development sectors to work together advancing health and racial equity through upstream partnerships. This primer shares the recommendations emerging from our roundtable and illustrates opportunities for public health to advance racial equity goals through engagement with those responsible for helping to shape the built environment. Support for 'Public Health Primer: Engaging Community Development for Health Equity' was provided by NACDD and the Robert Wood Johnson Foundation.

A 2023 survey* found that 81% of executives in public health agencies and 72% of state and local government public health employees believed addressing racism as a public health crisis should be part of their work. However, only 39% of those employees reported being highly engaged in such efforts.

This primer seeks both to create a starting point for the work and to challenge our perspectives of where

Quick Links

[How Public Health Practitioners Can Expand the Vital Conditions Framework](#)

[Get Acquainted with the Sectors](#)

[Discover New Partners](#)



Public Health Primer

- Explains the vital conditions for health and wellbeing
- Introduces the Community Development Sector
- Roles the Public Health Sector can play in multi-sector partnerships
- Includes a Partner Finder for you to discover partners in YOUR region
- Case Studies of successful multi-sector partnerships



How can communities play a central role in analysis and use of data, to reflect their unique lived experiences, historical context and inform community health needs?



Community-Driven Data and Evaluation Strategies to Transform Power and Place



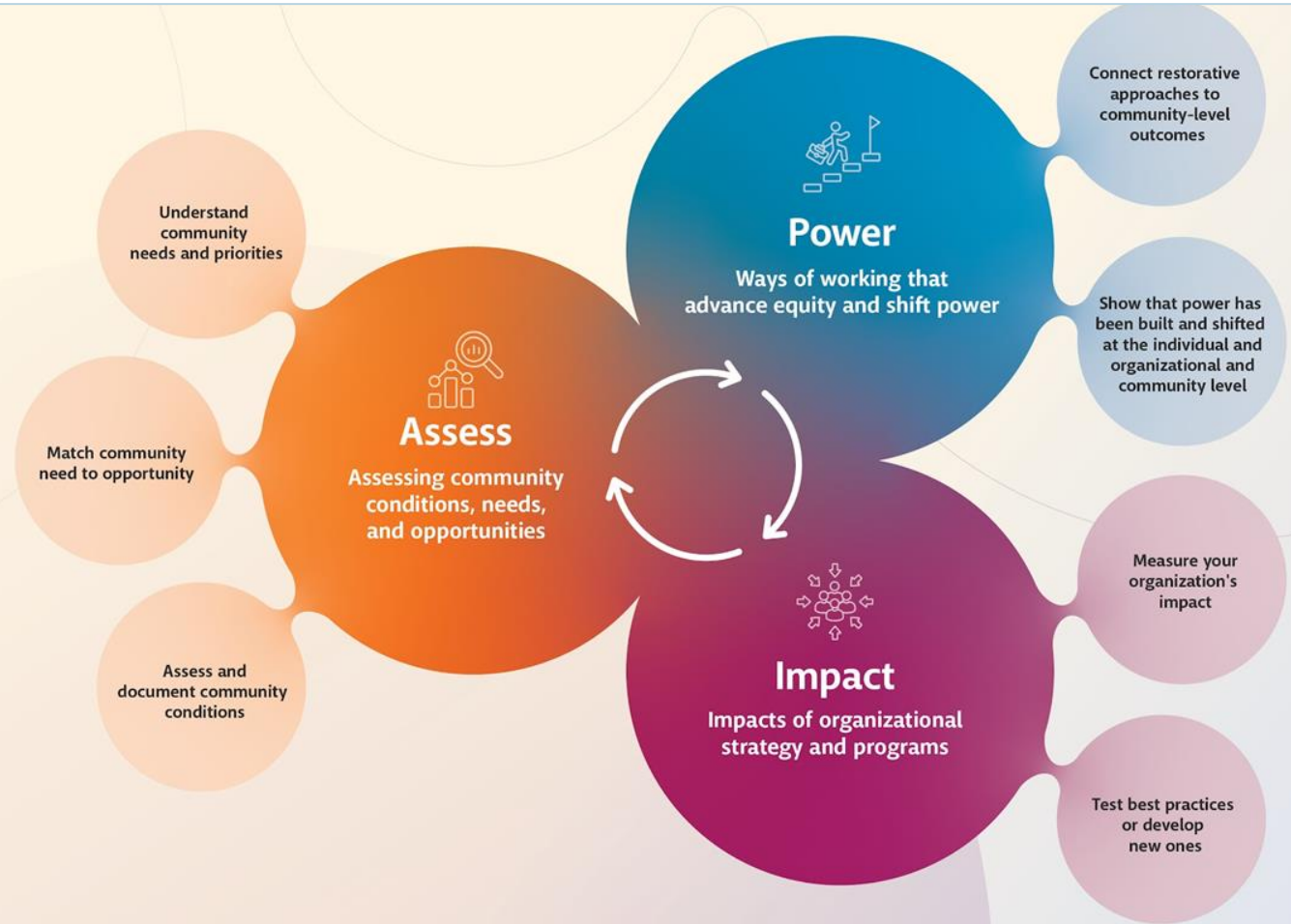
Build Healthy
Places Network



VERGE
IMPACT
PARTNERS

Why Community Driven Data?

- Grounding data and evaluation in the expertise & experience communities through community driven data practices produces stronger research and more actionable information.
- Bringing communities to the table informs equitable and just strategies for healthy communities
- Builds community power through the process



*Give me a place to stand,
and a lever long enough,
and I will move the world.*

Archimedes

Multi-sector partnerships are
'our lever long enough'



Build Healthy
Places Network



 BuildHealthyPlaces.org

 @BHPNetwork

 [linkedin.com/company/
Build-Healthy-Places-Network](https://linkedin.com/company/Build-Healthy-Places-Network)

 rthomassquance@buildhealthyplaces.org

