

Introducing the CDC Office of Rural Health

Diane M. Hall, PhD., MEd

Director

Office of Rural Health

National Center for State, Tribal, Local, and Territorial Infrastructure and Workforce

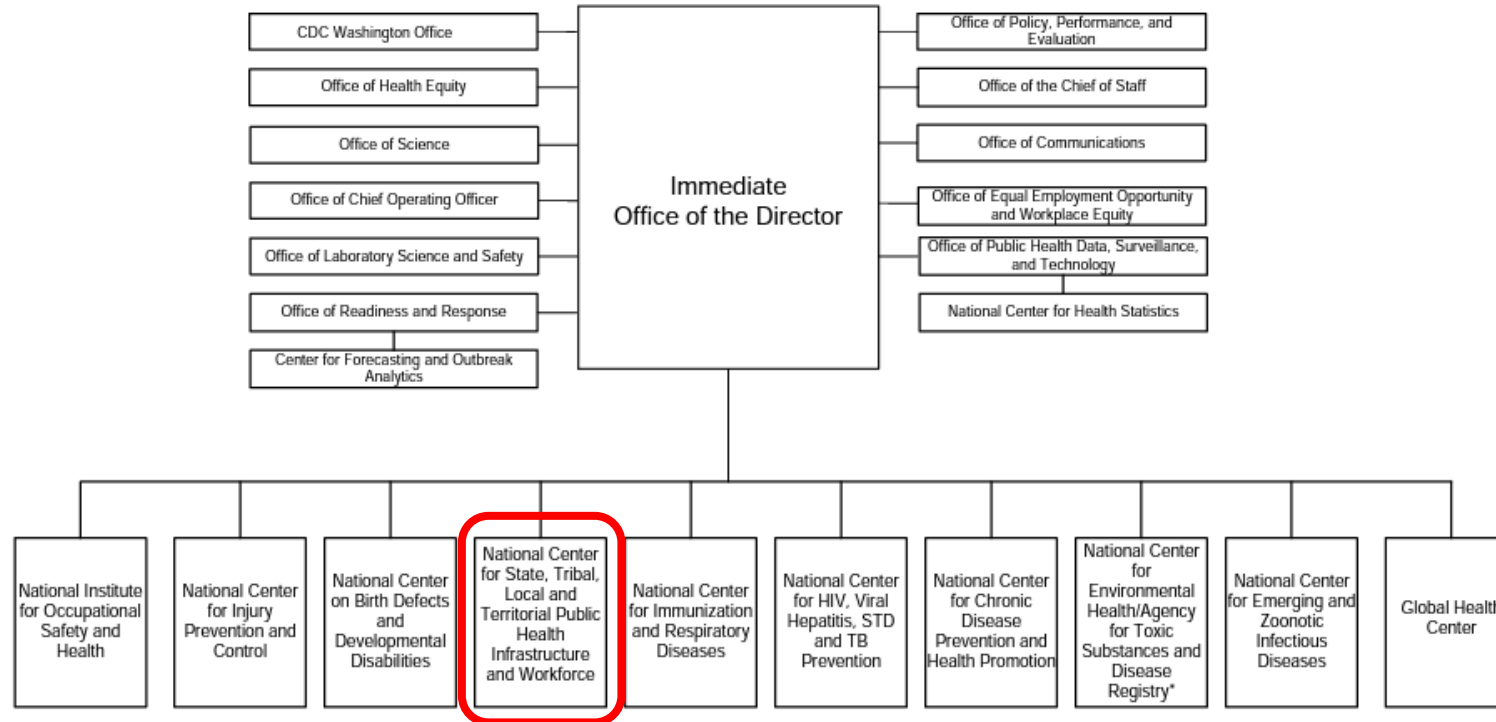
CDC

CDC's
PUBLIC HEALTH
INFRASTRUCTURE CENTER



CDC's New Organizational Structure

DEPARTMENT OF HEALTH AND HUMAN SERVICES CENTERS FOR DISEASE CONTROL AND PREVENTION (CDC)



*ATSDR (J) is an OPDIV within DHHS but is managed by a common director's office.

Public Health Infrastructure

is made up of the **people, services, and systems** needed to promote and protect health in every U.S. community



Primary Functions

Jurisdictional
Support



Division of
Jurisdictional
Support

Partnerships &
Technical
Assistance



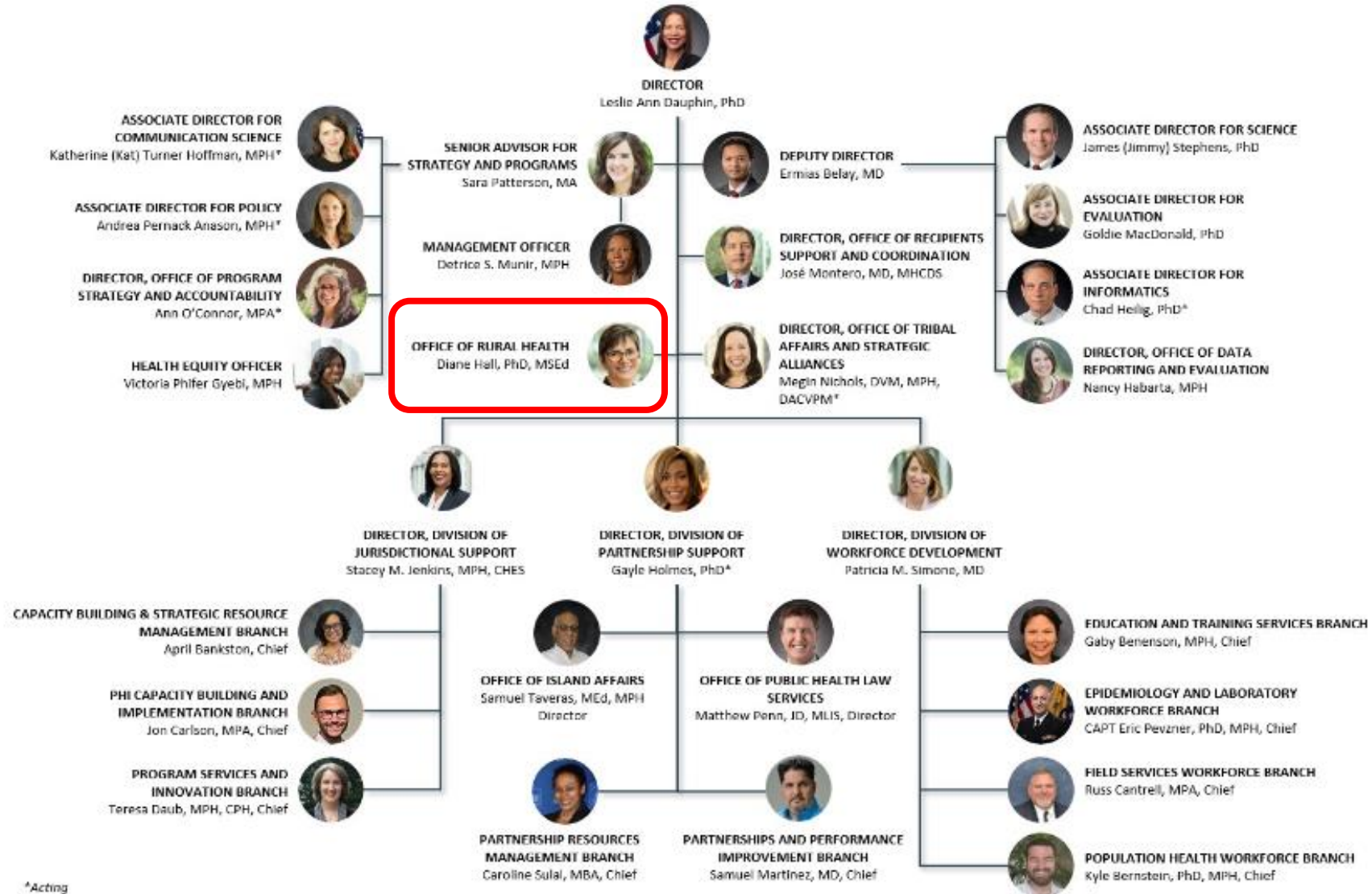
Division of
Partnership
Support

Workforce
Development



Division of
Workforce
Development

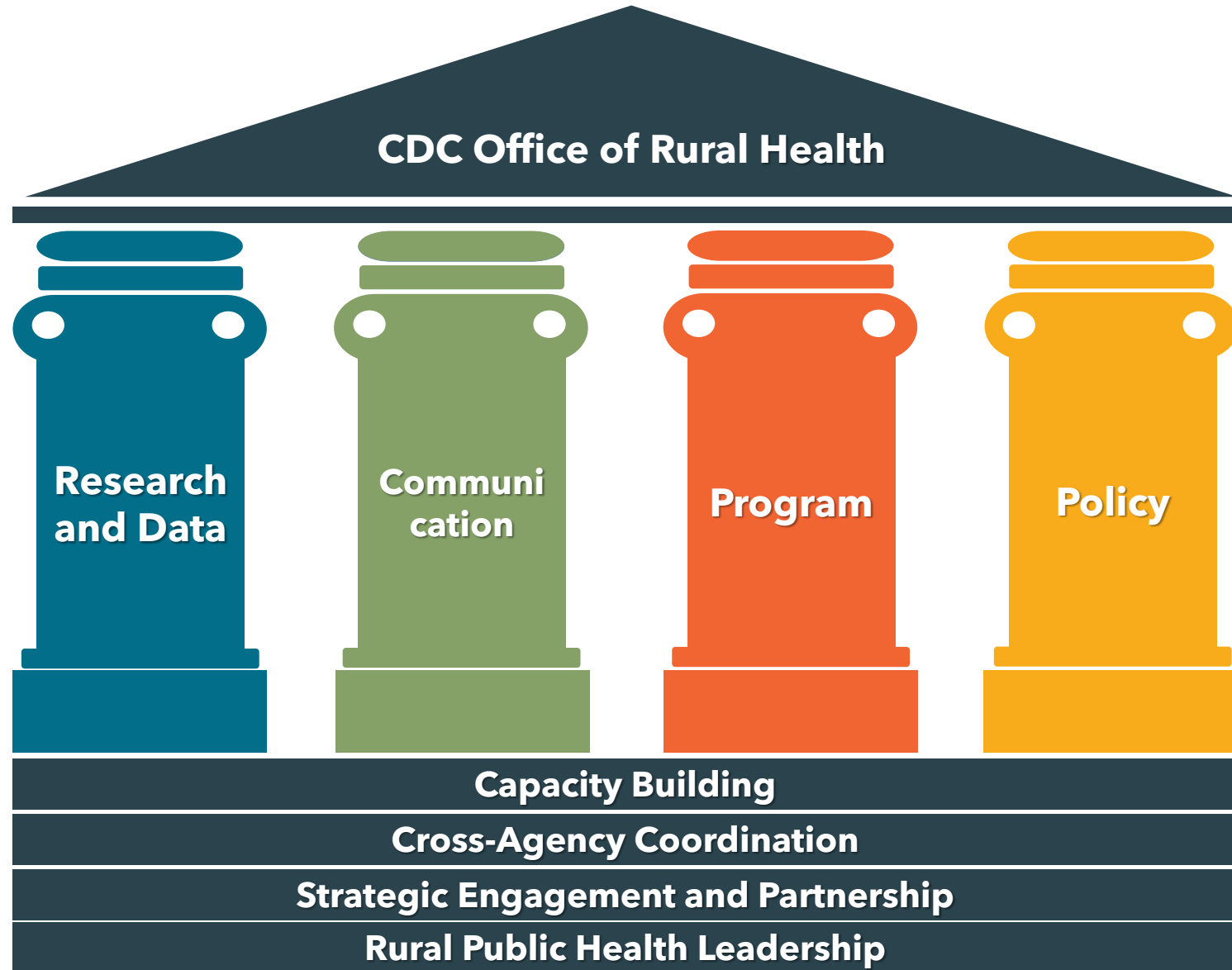
National Center for State, Tribal, Local, and Territorial Public Health Infrastructure and Workforce



*Acting
Last updated: November 2023

CDC Office of Rural Health

CDC Office of Rural Health



Principles



Office of Rural Health Principles

Focus on
Strengths

Champion the
Work

Disseminate
Best Practices

Collaborate
with Partners

Examine
Variability

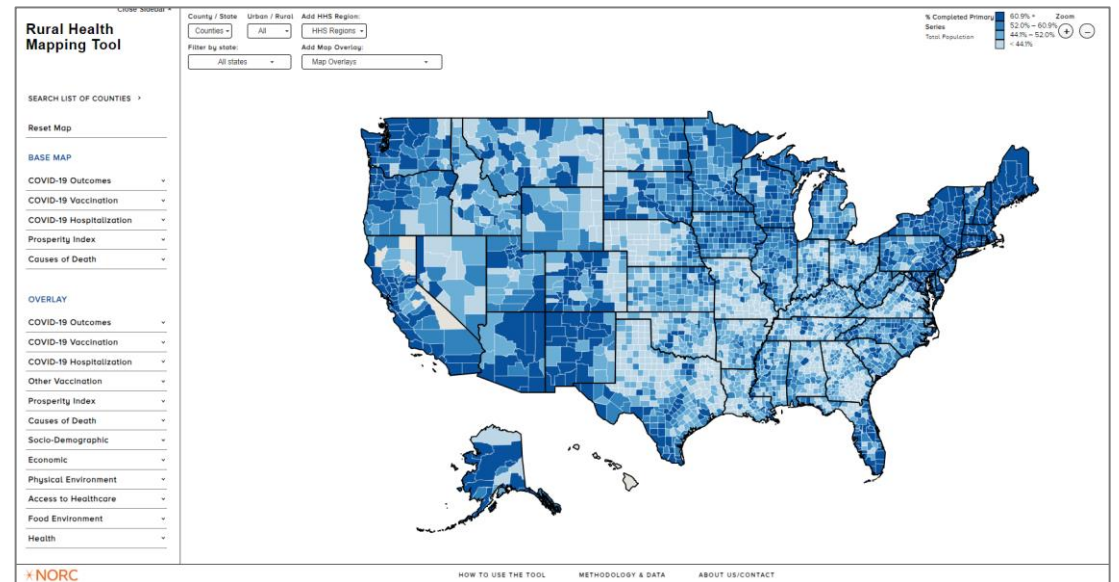
Integrate Rural
Health Across
CDC Programs

Resources



Resources

- Rural Emergency Preparedness and Response Toolkit
<https://www.ruralhealthinfo.org/toolkits/emergency-preparedness>
- Rural Health Mapping Tool
<https://ruralhealthmap.norc.org/>





CDC's PUBLIC HEALTH INFRASTRUCTURE CENTER

For more information, contact CDC
1-800-CDC-INFO (232-4636)
TTY: 1-888-232-6348. | www.cdc.gov



The findings and conclusions in this report are those of the authors and do not necessarily represent the official position of the Centers for Disease Control and Prevention.

Contact information:

Diane M. Hall, PhD, MEd
dmhall@cdc.gov

CDC Rural Health
ruralhealth@cdc.gov