

NOSORH's Rural Health Resources

January 18, 2023



National Organization of
State Offices of Rural Health

Learning Objectives



1

Locate resources
on the NOSORH
website

2

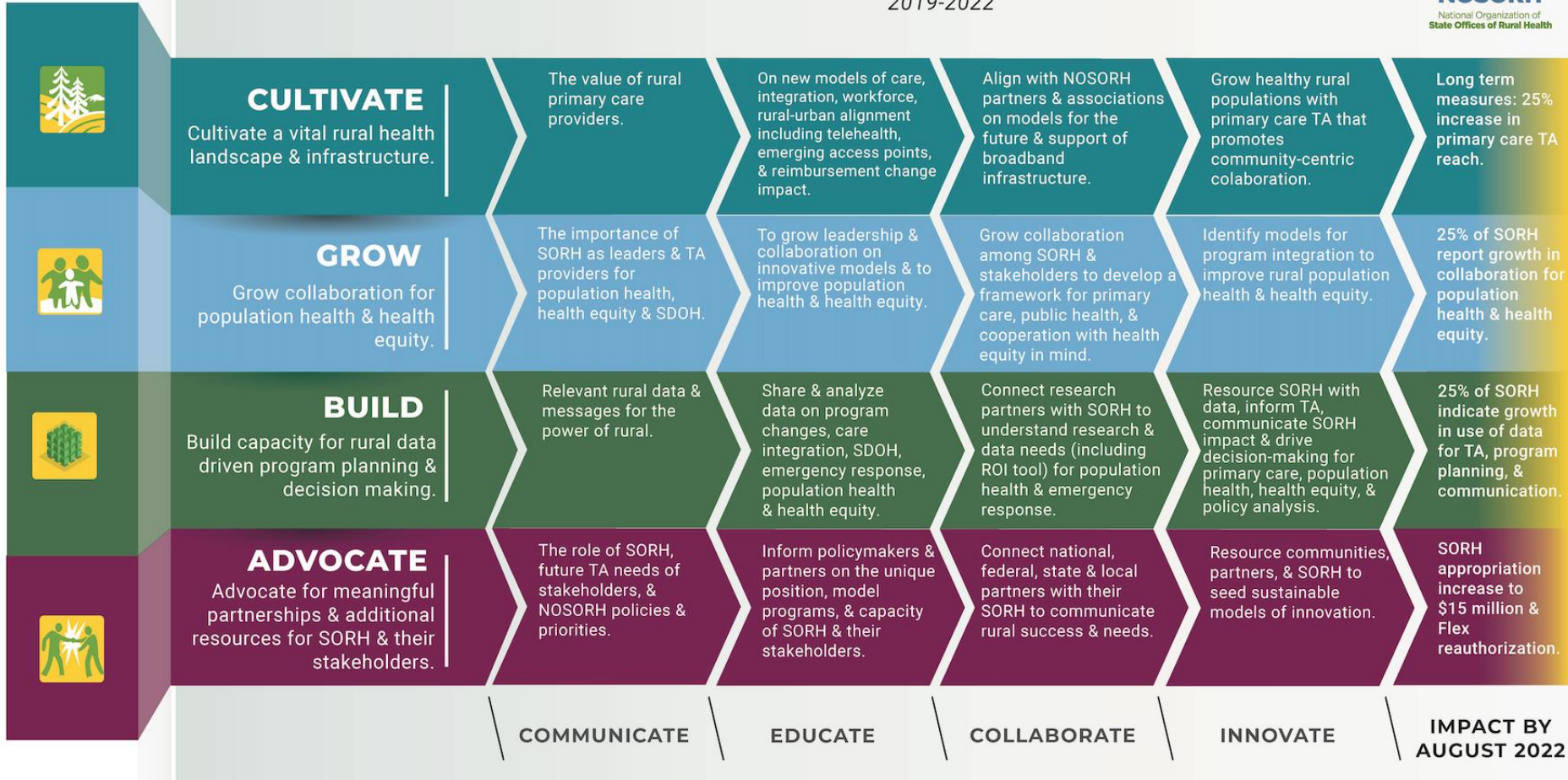
Integrate the
resources into
current SORH
efforts

3

Utilize simple
methods to share
the resources
with stakeholders

POWER OF RURAL - STRATEGIC PLAN

2019-2022





Webinars, Resources, and Meeting Sessions

["Pandemic Increases Pressure on Rural Hospitals and Communities"](#) presented by Troy Brown, National Leader, Chartis Center for Rural Health (Region E session)

[Revenue Cycle Measure and Management](#) (webinar)

[Introducing a Playbook for New Rural Healthcare Partnerships](#) (webinar)

[State of the Healthcare Industry: Market Updates for Rural for Q3](#) (webinar)





CULTIVATE
Cultivate a vital rural health landscape & infrastructure.

The value of rural primary care providers.

On new models of care, integration, workforce, rural-urban alignment including telehealth, emerging access points, & reimbursement change impact.

Align with NOSORH partners & associations on models for the future & support of broadband infrastructure.

Grow healthy rural populations with primary care TA that promotes community-centric collaboration.

Long term measures: 25% increase in primary care TA reach.

COMMUNICATE

EDUCATE

COLLABORATE

INNOVATE

IMPACT BY AUGUST 2022

Upcoming Resources

- **NOSORH 101**
- [8th Annual National Rural EMS & Care Conference](#)
 - Virtual Conference April 18-20, 2023
 - [Registration deadline is April 7, 2023](#)
- Meetings with Caroline.





GROW

Grow collaboration for population health & health equity.

The importance of SORH as leaders & TA providers for population health, health equity & SDOH.

COMMUNICATE

To grow leadership & collaboration on innovative models & to improve population health & health equity.

EDUCATE

Grow collaboration among SORH & stakeholders to develop a framework for primary care, public health, & cooperation with health equity in mind.

COLLABORATE

Identify models for program integration to improve rural population health & health equity.

INNOVATE

25% of SORH report growth in collaboration for population health & health equity.

IMPACT BY AUGUST 2022

Webinars, Resources, and Meeting Sessions

[Health Equity, Poverty and Rural Resilience](#)

(Region B session)

[NACCHO's Roots of Health Inequity](#)

[Your SORH Environmental Scan](#)





GROW

Grow collaboration for population health & health equity.

The importance of SORH as leaders & TA providers for population health, health equity & SDOH.

To grow leadership & collaboration on innovative models & to improve population health & health equity.

Grow collaboration among SORH & stakeholders to develop a framework for primary care, public health, & cooperation with health equity in mind.

Identify models for program integration to improve rural population health & health equity.

25% of SORH report growth in collaboration for population health & health equity.

COMMUNICATE

EDUCATE

COLLABORATE

INNOVATE

IMPACT BY AUGUST 2022

Capital Resources Project

[Rural Health Capital Resources webpage](#)

Rural Health Capital Council convened over 30 partners

In the works

- Continue to convene national capital resource partners
- Resources for increasing access to capital for rural
- Toolkit for SORHs on capital resources and capital resource partners
- Face-to-face meeting and the zoom meetings have been set, that information will be available soon.





GROW

Grow collaboration for population health & health equity.

The importance of SORH as leaders & TA providers for population health, health equity & SDOH.

To grow leadership & collaboration on innovative models & to improve population health & health equity.

Grow collaboration among SORH & stakeholders to develop a framework for primary care, public health, & cooperation with health equity in mind.

Identify models for program integration to improve rural population health & health equity.

25% of SORH report growth in collaboration for population health & health equity.

COMMUNICATE

EDUCATE

COLLABORATE

INNOVATE

IMPACT BY AUGUST 2022

Upcoming Resources

- [Pathways to Population Health Equity Learning Community](#)
 - February 2nd at 1:30pm EST
 - March 2nd at 2 pm EST
 - April 6th at 2pm EST
 - May 11th at 2pm EST
 - June 1st at 2pm EST
 - July 13th at 2pm EST
- **Region Meeting Planning Committees:**
 - If you are interested in serving on the planning committee for your region, please reach out to Caroline Wroczynski at CarolineW@nosorh.org.
 - Dates and locations for Regional Meetings will be coming soon.
 - Committee members will meet at least two times.





BUILD

Build capacity for rural data driven program planning & decision making.

Relevant rural data & messages for the power of rural.

COMMUNICATE

Share & analyze data on program changes, care integration, SDOH, emergency response, population health & health equity.

EDUCATE

Connect research partners with SORH to understand research & data needs (including ROI tool) for population health & emergency response.

COLLABORATE

Resource SORH with data, inform TA, communicate SORH impact & drive decision-making for primary care, population health, health equity, & policy analysis.

INNOVATE

25% of SORH indicate growth in use of data for TA, program planning, & communication.

IMPACT BY AUGUST 2022

Webinars, Resources, and Meeting Sessions

NOSORH News on homepage of [NOSORH website](#)

[All You Need to Know about CAHs](#) (webinar)

[Critical FCC Broadband Initiatives for Rural & Underserved Communities, a conversation with NOSORH and NRHA](#) (webinar)

[Overview of FY23 State Office of Rural Health \(SORH\) NCC](#) (webinar)

[The Post-Acute Care Lever Hospital Swing Beds](#) (webinar)

[Provider Practice Designations & Alignment](#) (webinar)



National Organization of **State Offices of Rural Health**





BUILD

Build capacity for rural data driven program planning & decision making.

Relevant rural data & messages for the power of rural.

COMMUNICATE

Share & analyze data on program changes, care integration, SDOH, emergency response, population health & health equity.

EDUCATE

Connect research partners with SORH to understand research & data needs (including ROI tool) for population health & emergency response.

COLLABORATE

Resource SORH with data, inform TA, communicate SORH impact & drive decision-making for primary care, population health, health equity, & policy analysis.

INNOVATE

25% of SORH indicate growth in use of data for TA, program planning, & communication.

IMPACT BY AUGUST 2022

Upcoming Activities

- 2023 NOSORH Rural Health Grant Writing Institute
 - February 27-May 8, 2023
 - Registration Deadline February 17th, 2023
 - [Rural Health Grant Writing Institute flyer.](#)





ADVOCATE
Advocate for meaningful partnerships & additional resources for SORH & their stakeholders.

COMMUNICATE

The role of SORH, future TA needs of stakeholders, & NOSORH policies & priorities.

EDUCATE

Inform policymakers & partners on the unique position, model programs, & capacity of SORH & their stakeholders.

COLLABORATE

Connect national, federal, state & local partners with their SORH to communicate rural success & needs.

INNOVATE

Resource communities, partners, & SORH to seed sustainable models of innovation.

IMPACT BY AUGUST 2022

SORH appropriation increase to \$15 million & Flex reauthorization.

Webinars, Resources, and Meeting Sessions

National Rural Health Day:

- [2022 Key Messages & Data Points eBook](#)
- [Collaboration Carpool: Conversations with Mission-Minded Rural Stakeholders](#) (webinar)
- [Telling the Stories of Rural Health in America](#) (webinar)
- [Community Stars eBook](#)



National Organization of **State Offices of Rural Health**





Webinars, Resources, and Meeting Sessions (cont.)

[Key Affiliation Developments & Perspectives for Rural Health Systems and State Offices of Rural Health](#)

[Rural Philanthropic Resources for SORH :](#)

- 3 resources from Allen Smart and a new NOSORH web page



Upcoming Activities

[State Rural Health Town Hall](#)

Join HRSA, FORHP, NOSORH, and the State Offices of Rural Health Monday, January 30, 2023, at 2:00pm EST!

Questions?





Chris Salyers

Director of Programs & Evaluations

Phone: (888) 391-7258 Ext. 106

Mobile: 859.537.8721

Email: chris.salyers@nosorh.org

Contact us!

Caroline Wroczynski

Education Manager

Phone: 888.391.7258 ext. 127

Email: carolinew@nosorh.org



National Organization of
State Offices of Rural Health