

# NOSORH Update

Wednesday, July 27<sup>th</sup>, 2022



**NOSORH**

National Organization of  
State Offices of Rural Health



# You made it!

- We are back in person for the first time since 2019
- You've accomplished so much during the pandemic
- Taken on new tasks and roles



# Thank you, Region C!

- Crystal Barter – Past President, Nominating Committee Chair
- Kathryn Miller – State Office Council
- John Barnas – Program Analysis and Response Committee Chair
- Margaret Brockman – Regional Representative
- Zora Radosevich – Regional Representative
- Jill Oesterle – Primary Care Committee Chair
  
- [Committee Information](#) and to join!





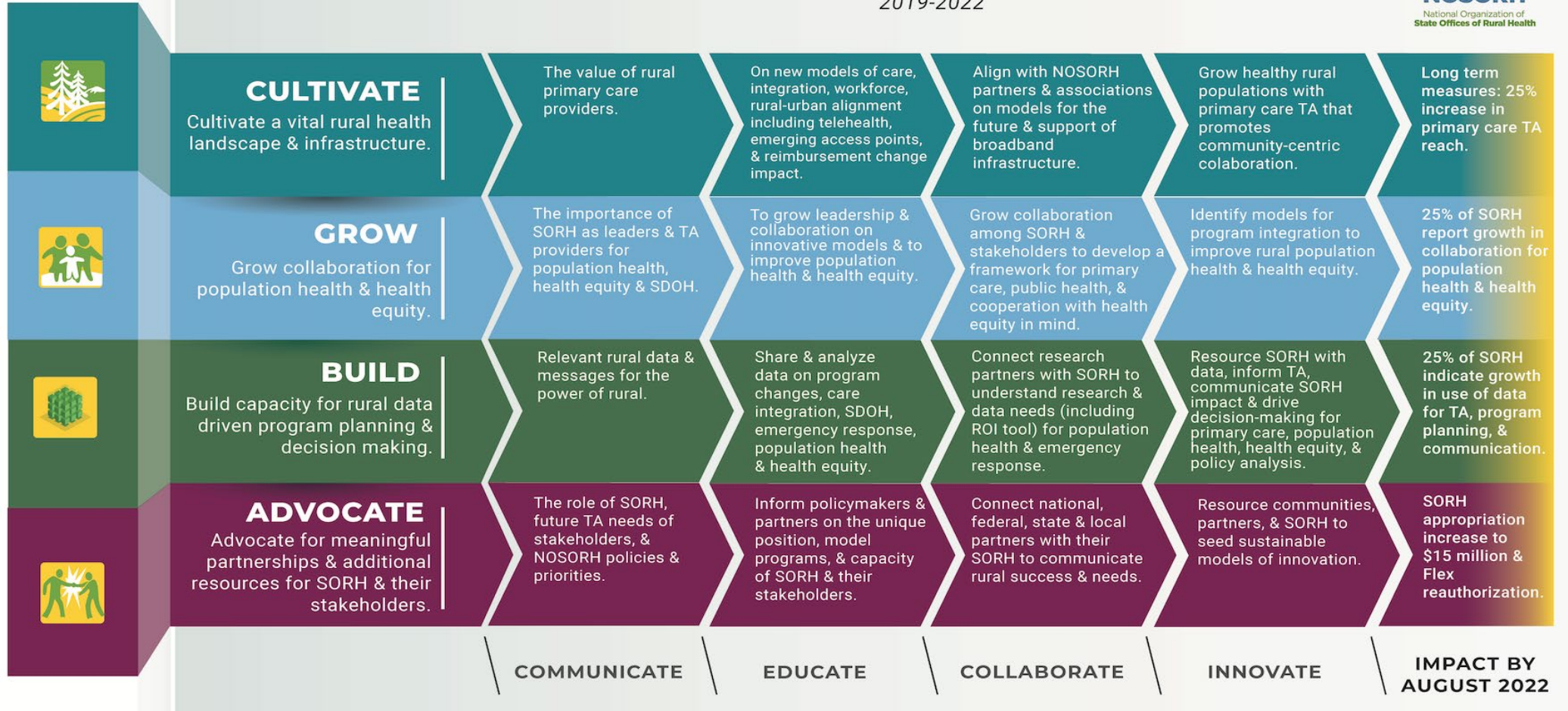
# **New NOSORH Awards!**

- Spirit of Rural Award
  - SORH Innovation Award
  - Collaboration Award
  - NOSORH Advocate Award
- 

# NOSORH Strategy Map



## POWER OF RURAL - STRATEGIC PLAN 2019-2022



# Regional Representative Election

- Zora Radosevich has agreed to be your Regional Representative for another 2 year term!



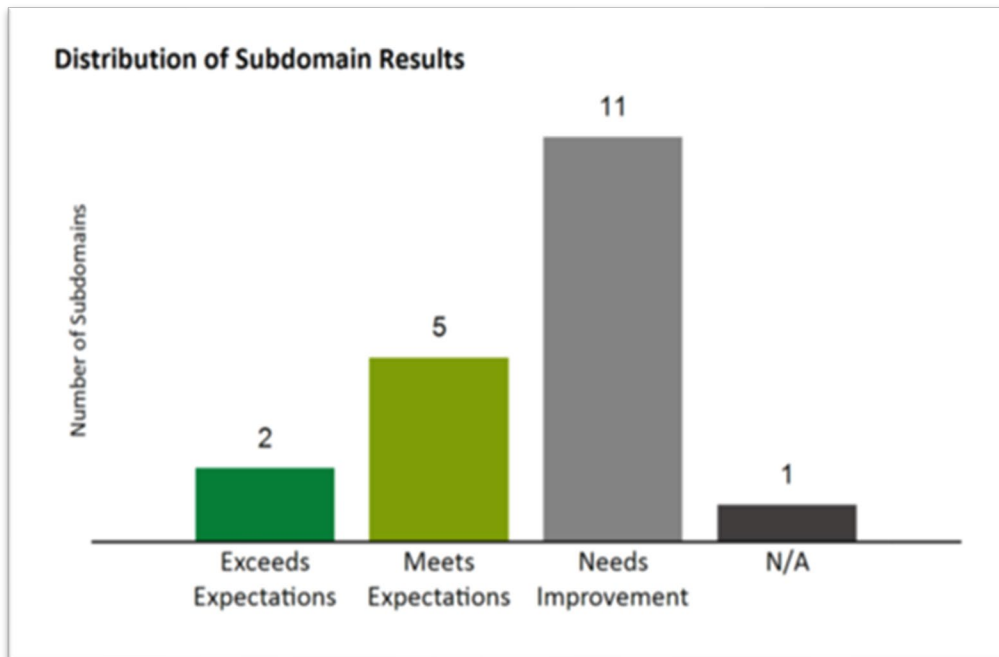


# DE&I and Health Equity

# Diversity, Equity, and Inclusion

Diversity, Equity, and Inclusion Task Force to focus on recommendations to the board on governance and education strategy.

Association Inclusion Index Results:



<b>A. Mission and Focus</b>	
Needs Improvement	A1. Mission and Focus Score
Not Applicable	A2. Global and International Score
<b>B. Roles and Leadership Accountability</b>	
Needs Improvement	B1. Board of Directors Score
Needs Improvement	B2. Membership Score
Needs Improvement	B3. Volunteer Groups Score
Needs Improvement	B4. Senior Administration Score
Needs Improvement	B5. Accountability and Strategy Score
<b>C. Resources</b>	
Needs Improvement	C1. Fundraising and Resource Acquisition Score
Meets Expectations	C2. D+I as a Cost or Investment Score
<b>D. Operations</b>	
Needs Improvement	D1. Hiring Score
Needs Improvement	D2. Policies Score
Exceeds Expectations	D3. Equal Opportunity Employment Score
Exceeds Expectations	D4. Retention Score
Needs Improvement	D5. Vendors Score
Meets Expectations	D6. Organizational Performance Score
<b>E. Communications and Culture</b>	
Needs Improvement	E1. Cultural Competency Score
Meets Expectations	E2. Identity Safety Score
Meets Expectations	E3. Marketing/Communications Score
Meets Expectations	E4. Meetings/Event Planning Score

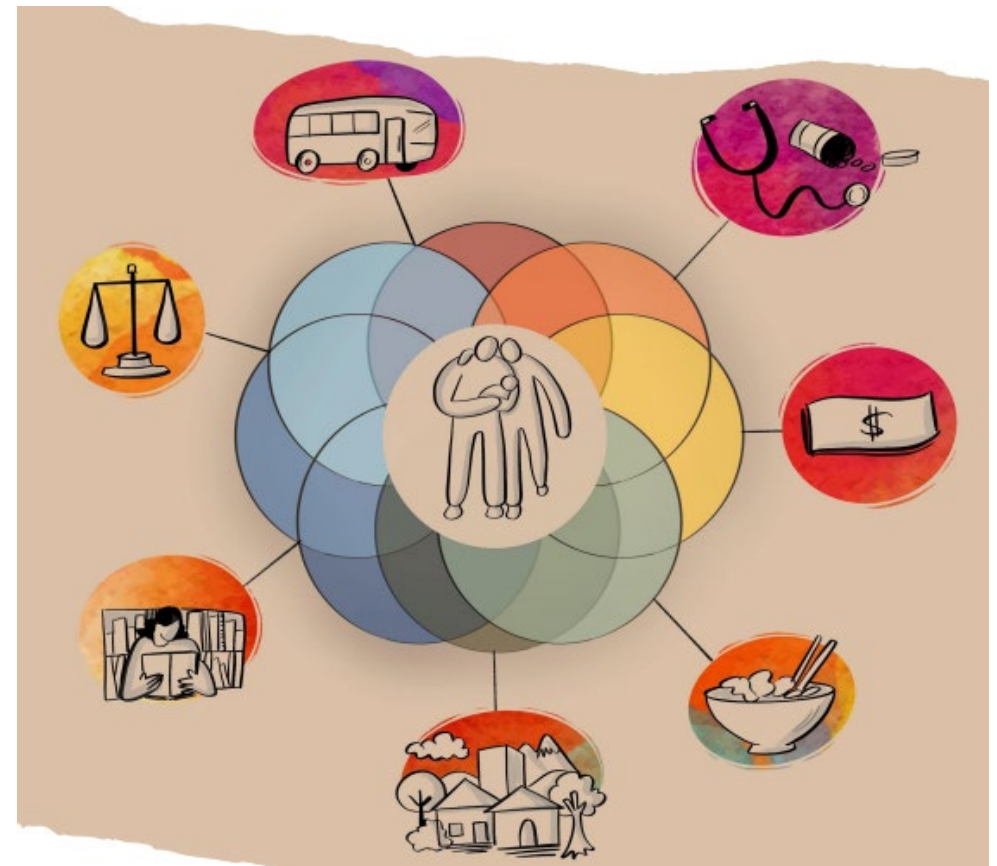


# DE&I – Changing the narrative

*"Health means the collective wellbeing of all living beings and the Earth. We recognize and embrace that we are connected and linked to one another."*

Credit:

- Project Leads - County Health Rankings & Roadmaps, and Human Impact Partners
- Artwork (to the right) - Yolanda Liman & Drawing Change ([drawingchange.com](http://drawingchange.com))



# 2022 NOSORH Annual Meeting



When: October 5th - 6th  
Where: Harrisonburg, VA

# National Rural Health Day


November 17, 2022

#powerofrural

National Rural  
Health Day ™  
*Celebrating the Power of Rural!*

IT'S NOT JUST A DAY, IT'S A MOVEMENT.

- When:  
November 17<sup>th</sup>, 2022
- Community Stars nominations:  
Due 8/1/22
- Theme:  
Driving Change – Going the Extra Mile



# **SORH**

# **Proficiencies**

**(Region C Review)**



Table 4. Mean Target Area Scores by SORH Region, 2022

### Mean Target Area Scores by SORH Region

Target Area	Region A	Region B	Region C	Region D	Region E	National
1. Grants Management	2.35	2.4	<b>2.39</b>	2.64	2.51	<b>2.44</b>
2. Information Dissemination	2.33	2.41	<b>2.48</b>	2.45	2.46	<b>2.42</b>
3. Organizational Capacity	2.12	2.31	<b>2.15</b>	2.2	2.34	<b>2.23</b>
4. Funding	2.11	2.4	<b>2.34</b>	2.19	2.43	<b>2.32</b>

# What did we learn?

- Higher scores in information dissemination efforts/ability to connect with key stakeholders.
- Environmental scanning of rural communities remains the biggest challenge.
- Identifying additional resources to support sustainability rose in need.
- In line with turnover, some basic components of grants management dropped.

## Did You Know...

NOSORH has tools and resources to help your SORH with environmental scanning!

2020 Annual Meeting session: [SORH Environmental Scanning During COVID-19](#)

Fact Sheet: [SORH Environmental Scanning Tools and Resources](#)

# Next steps for SORH Proficiencies

- NOSORH Committees support developing/identifying resources for areas of highest need
- Annual Meeting sessions: Core topic, Workforce, Primary Care Integration, and Communicating SORH Impact
- Topical proficiencies (Workforce, Primary Care Integration, Communicating SORH Impact)
  - Assessments available August – December
  - Topical benchmarking report Spring 2023



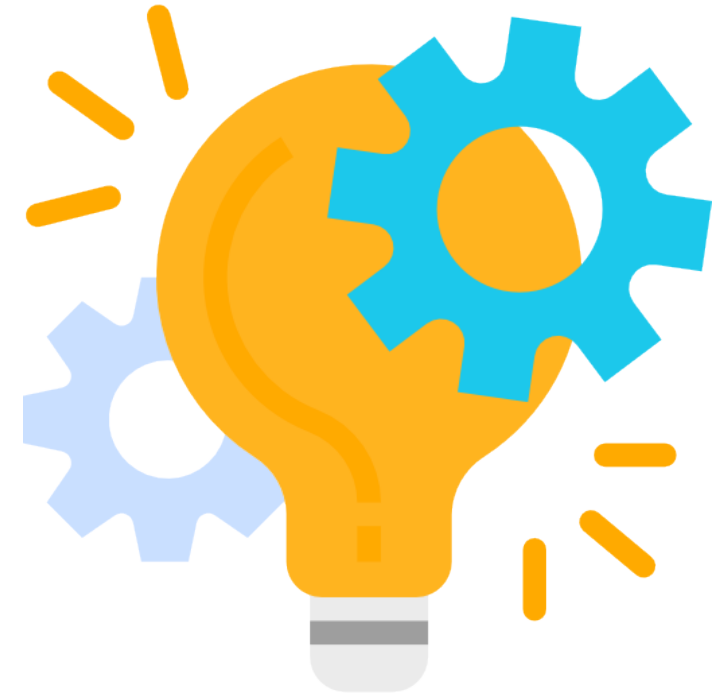
# Rural Population Health Equity

**(Collaboration to support  
2103 COVID Disparities Programs)**



# Key Deliverables by July 2022

- Concept paper outlining the need for a tailored Rural Health Equity training
- Scan of existing rural multi-sector collaboratives (i.e., Networks, coalitions, etc.)
- SORH Focus Group to review and refine the Pathways to Population Health Equity framework
- Support Technical Assistance requests received by state grantees
  - Supports our Health Equity learning community for SORH



# What's next for health equity programming?

- Continue efforts with ASTHO to support grantees/learning community
- Collaborate with ASTHO to build a rural-focused health equity training
- NACCHO Roots of Inequities online course revision to incorporate geography – facilitated training available from NACHHO
- CDC rural-focused public health research/data symposium (virtually)
- NOSORH/ASTHO/PCO National Committee proposal on PCO role in achieving health equity, to APHA 2022

*More opportunities to plug in coming!*





# **Vision for the next chapter**



**(Tammy Norville)**



## **NOSORH's vision**

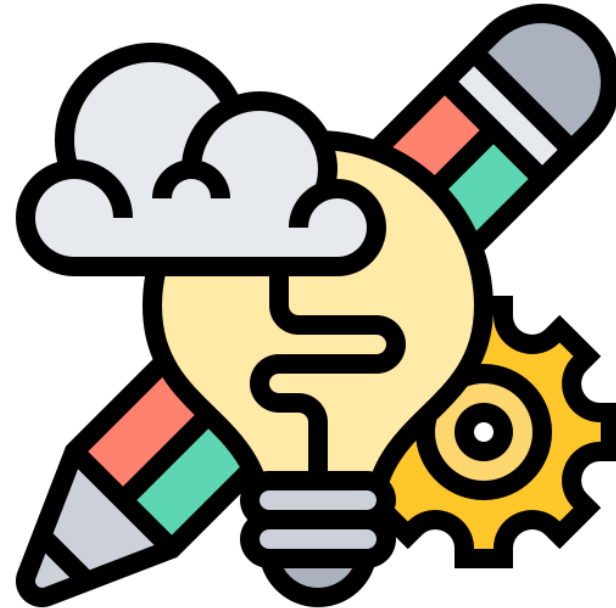
NOSORH grows connections, tools, and education to support and build vital healthy rural communities.



# My vision

NOSORH is the foremost national provider and storehouse of information, data, support and capacity building for rural health working daily to help SORH help rural providers, neighbors and communities become and remain more well.

Our Mantra:  
*Grow the Team*  
*Grow the Organization for SORH*  
*by SORH*



## The how

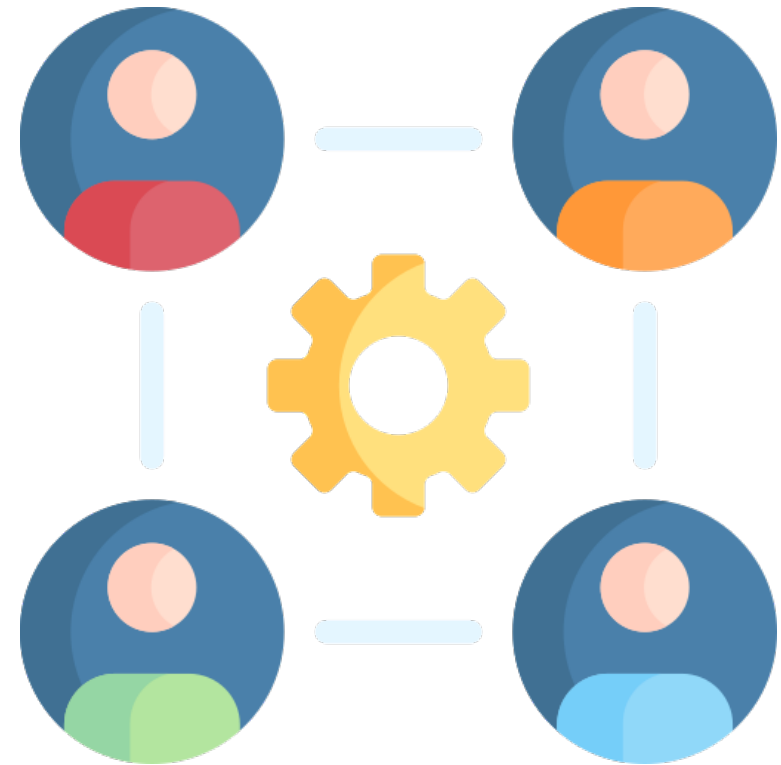
Delivering on the vision



# Purpose

Provide support and capacity building for  
SORH and their stakeholders

- Supporting the development of state and community rural health leaders
- Creating and facilitating state, regional and national partnerships that foster information sharing and spur rural health-related programs/activities
- Enhancing access to quality healthcare services in rural communities



# What if...

*Grow the Team  
Grow the Organization for SORH  
by SORH*


- Outward Facing Focus
- Leveraging Funds
- Strengthen Infrastructure







# Policy makers want to...

- Impact people in their district
  - Address what they can “get done” in the current environment
  - Know and understand the role and importance of SORH within their state
  - Understand the importance of continued, quality access to healthcare in their rural and frontier communities
- 

# Outward Facing Focus

## Investing Partners

- Right Partners
- Mutually beneficial collaboration activities

## Collaborative Partners

- CDC, ASTHO, FORHP, etc.
- Building new collaborations



# Grow the Team Grow the Organization for SORH by SORH

## Grow the team –

- Team members in right “places”
- Culture focus
- Growing and developing team
  - Professionally
  - Personally

Ensure processes are nimble enough to quickly pivot when needed

Grow the NOSORH “brand”

**Please let me know if you have questions, would like a discussion, or if I may be of assistance!**

Tammy Norville, NOSORH CEO

Phone: 888.391.7258 ext. 105

Mobile: 919.215.0220

Email: [tammyn@nosorh.org](mailto:tammyn@nosorh.org)

