

NOSORH's Rural Health Resources

July 18, 2022



National Organization of
State Offices of Rural Health

Learning Objectives

1

Locate resources
on the NOSORH
website

2

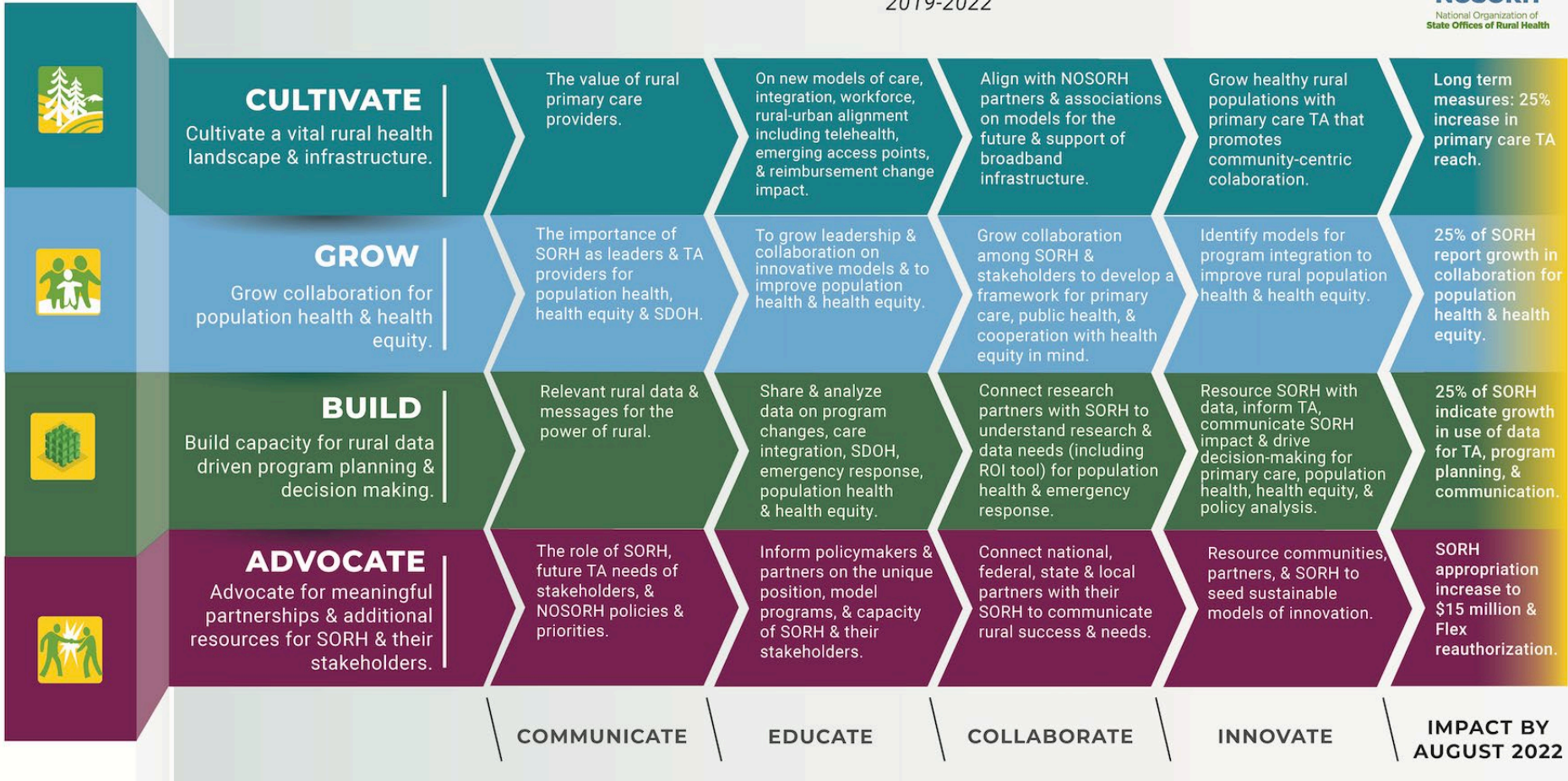
Integrate the
resources into
current SORH
efforts

3

Utilize simple
methods to share
the resources
with stakeholders

POWER OF RURAL - STRATEGIC PLAN

2019-2022



Key Upcoming Dates

NOSORH Annual Meeting

October 4-6, 2022 | Harrisonburg, Virginia

[Registration is now open!](#)



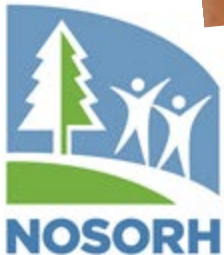
National Organization of **State Offices of Rural Health**

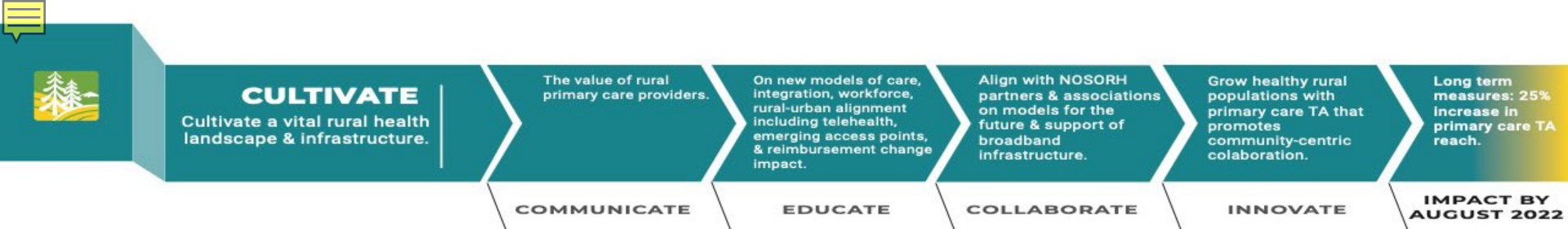


Caroline Wroczynski, Education Coordinator



- Political Science Major from the University of Kansas
- Pursuing Masters in Public Administration and Business
- Served as the Flex, PCO, SLRP, SHIP, and SORH coordinator for the Kansas Office of Primary Care and Rural Health
- Training Coordinator working with the Kansas Grants Program on VOCA and VAWA grants
- she/her/hers





Webinars, Resources, and Meeting Sessions

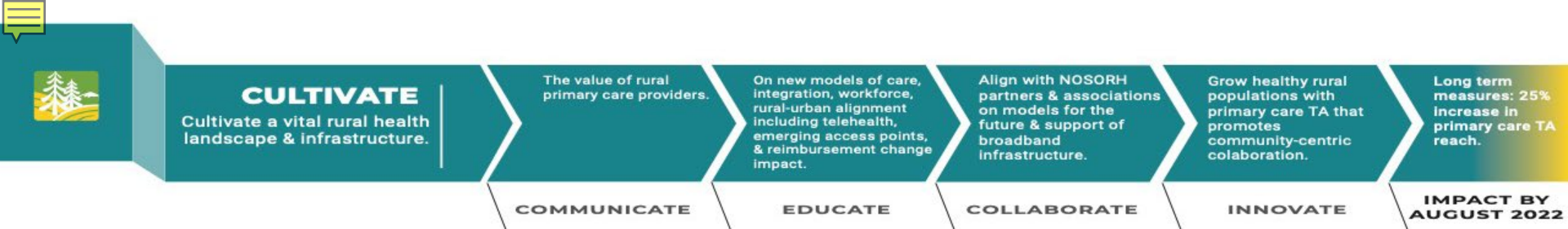
[From Volume to Value: Impact on Rural Providers and SORH Transition Assistance \(webinar and slides\)](#)

[State of the Healthcare Industry; Market Updates for Rural for Q1 \(webinar and slides\)](#)

[North Carolina Community Health Worker Program \(Region B session slides\)](#)

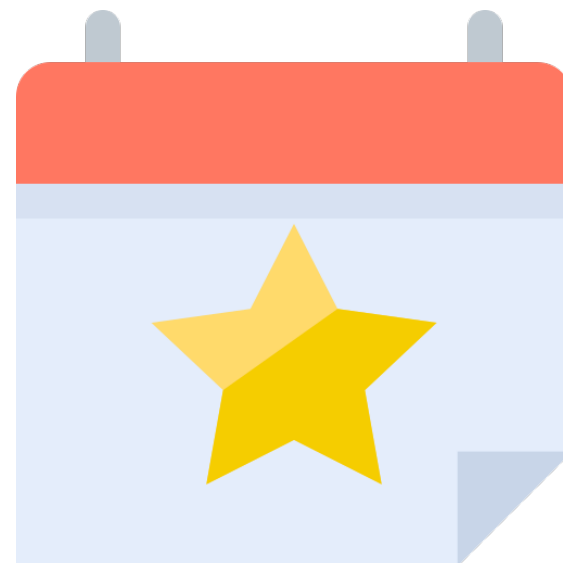
[Understanding your market through a health equity lens \(webinar and slides\)](#)





Upcoming Resources

- Rural Health Leadership Institute 2022
 - July 19, 2022 – May 16, 2023
 - [Register](#) by **July 19, 2022**
- Community Development Institute
 - July 19, 2022 – May 16, 2023
 - [Register](#) by **July 19, 2022**
- Education and engagement on Rural Emergency Hospitals
- Broadband listening session (8/17)





GROW

Grow collaboration for population health & health equity.

The importance of SORH as leaders & TA providers for population health, health equity & SDOH.

COMMUNICATE

To grow leadership & collaboration on innovative models & to improve population health & health equity.

EDUCATE

Grow collaboration among SORH & stakeholders to develop a framework for primary care, public health, & cooperation with health equity in mind.

COLLABORATE

Identify models for program integration to improve rural population health & health equity.

INNOVATE

25% of SORH report growth in collaboration for population health & health equity.

IMPACT BY AUGUST 2022

Webinars, Resources, and Meeting Sessions

[Health Equity, Poverty and Rural Resilience](#)

(Region B session slides)

[Building Community – Clinical linkages to increase cancer screenings in rural South Carolina](#)

(Region B session slides)

[Pathways to Population Health Equity](#)

[NACCHO's Roots of Health Inequity](#)





GROW

Grow collaboration for population health & health equity.

The importance of SORH as leaders & TA providers for population health, health equity & SDOH.

COMMUNICATE

To grow leadership & collaboration on innovative models & to improve population health & health equity.

EDUCATE

Grow collaboration among SORH & stakeholders to develop a framework for primary care, public health, & cooperation with health equity in mind.

COLLABORATE

Identify models for program integration to improve rural population health & health equity.

INNOVATE

25% of SORH report growth in collaboration for population health & health equity.

IMPACT BY AUGUST 2022

Capital Resources Project

[Rural Health Capital Resources webpage](#)

Rural Health Capital Council convened over 30 partners

In the works

- Region C Pre-session July 26
- Continue to convene national capital resource partners
- Resources for increasing access to capital for rural
- Fall webinars on capital resources
- Toolkit for SORHs on capital resources and capital resource partners





GROW

Grow collaboration for population health & health equity.

The importance of SORH as leaders & TA providers for population health, health equity & SDOH.

COMMUNICATE

To grow leadership & collaboration on innovative models & to improve population health & health equity.

EDUCATE

Grow collaboration among SORH & stakeholders to develop a framework for primary care, public health, & cooperation with health equity in mind.

COLLABORATE

Identify models for program integration to improve rural population health & health equity.

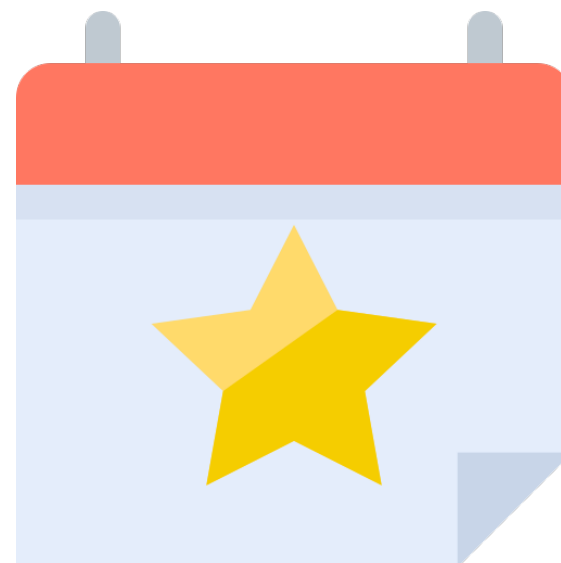
INNOVATE

25% of SORH report growth in collaboration for population health & health equity.

IMPACT BY AUGUST 2022

Upcoming Resources

- SORH Health Equity Learning Community (TBD)
 - What do you want to discuss?!
- Rural Community Collaborative inventory
- SME subcontract with Wellbeing and Equity (WE) in the World





BUILD

Build capacity for rural data driven program planning & decision making.

Relevant rural data & messages for the power of rural.

COMMUNICATE

Share & analyze data on program changes, care integration, SDOH, emergency response, population health & health equity.

EDUCATE

Connect research partners with SORH to understand research & data needs (including ROI tool) for population health & emergency response.

COLLABORATE

Resource SORH with data, inform TA, communicate SORH impact & drive decision-making for primary care, population health, health equity, & policy analysis.

INNOVATE

25% of SORH indicate growth in use of data for TA, program planning, & communication.

IMPACT BY AUGUST 2022

Webinars, Resources, and Meeting Sessions

NOSORH News on homepage of [NOSORH website](#)

[Accessing Data for Grant Writing](#) (Region B session slides)

[SORH Capacity Building: 2022 Core Proficiencies](#)

[Benchmarking Report](#) (webinar and slides)

[Economic Development for Health Care Leaders, Part 2](#)

(webinar and slides)

Recent PARC Comments

[FY 23 Proposed Rules for IPHS Hospitals and other Facilities](#)

[Promoting Telehealth in rural America](#)





BUILD

Build capacity for rural data driven program planning & decision making.

Relevant rural data & messages for the power of rural.

COMMUNICATE

Share & analyze data on program changes, care integration, SDOH, emergency response, population health & health equity.

EDUCATE

Connect research partners with SORH to understand research & data needs (including ROI tool) for population health & emergency response.

COLLABORATE

Resource SORH with data, inform TA, communicate SORH impact & drive decision-making for primary care, population health, health equity, & policy analysis.

INNOVATE

25% of SORH indicate growth in use of data for TA, program planning, & communication.

IMPACT BY AUGUST 2022

Upcoming Activities

- SORH/Flex/SHIP integration best practices
- [Rural Health Data Summit](#) - August 10-11, 1-4pm CT, Hosted by: Wisconsin SORH
- Continuation of Rural Data SEED (evaluation) for 22/23





ADVOCATE

Advocate for meaningful partnerships & additional resources for SORH & their stakeholders.

The role of SORH, future TA needs of stakeholders, & NOSORH policies & priorities.

COMMUNICATE

Inform policymakers & partners on the unique position, model programs, & capacity of SORH & their stakeholders.

EDUCATE

Connect national, federal, state & local partners with their SORH to communicate rural success & needs.

COLLABORATE

Resource communities, partners, & SORH to seed sustainable models of innovation.

INNOVATE

SORH appropriation increase to \$15 million & Flex reauthorization.

IMPACT BY AUGUST 2022

Advocacy

[Call for Action](#) to support state Primary Care Offices

National Rural Health Day

- [Promotional Toolkit](#)
- [Ideas on how to celebrate NRHD](#)
- [Accepting Community Star nominations until August 1](#)
 - Current: Texas, Oregon, California, Wyoming, West Virginia, Indiana, Louisiana, Virginia, Idaho



National Organization of **State Offices of Rural Health**





ADVOCATE

Advocate for meaningful partnerships & additional resources for SORH & their stakeholders.

The role of SORH, future TA needs of stakeholders, & NOSORH policies & priorities.

COMMUNICATE

Inform policymakers & partners on the unique position, model programs, & capacity of SORH & their stakeholders.

EDUCATE

Connect national, federal, state & local partners with their SORH to communicate rural success & needs.

COLLABORATE

Resource communities, partners, & SORH to seed sustainable models of innovation.

INNOVATE

SORH appropriation increase to \$15 million & Flex reauthorization.

IMPACT BY AUGUST 2022

Mark Your Calendars & Get Planning!

*2022 National Rural Health Day
November 17th*



*NRHD swag shop will be opening in late
July/early August.*

Questions?





Chris Salyers

Director of Programs & Evaluations

Phone: (888) 391-7258 Ext. 106

Mobile: 859.537.8721

Email: chris.salyers@nosorh.org

Contact us!

Caroline Wrocynski

Education Coordinator

Phone: 888.391.7258 ext. 127

Email: carolinew@nosorh.org



National Organization of
State Offices of Rural Health