

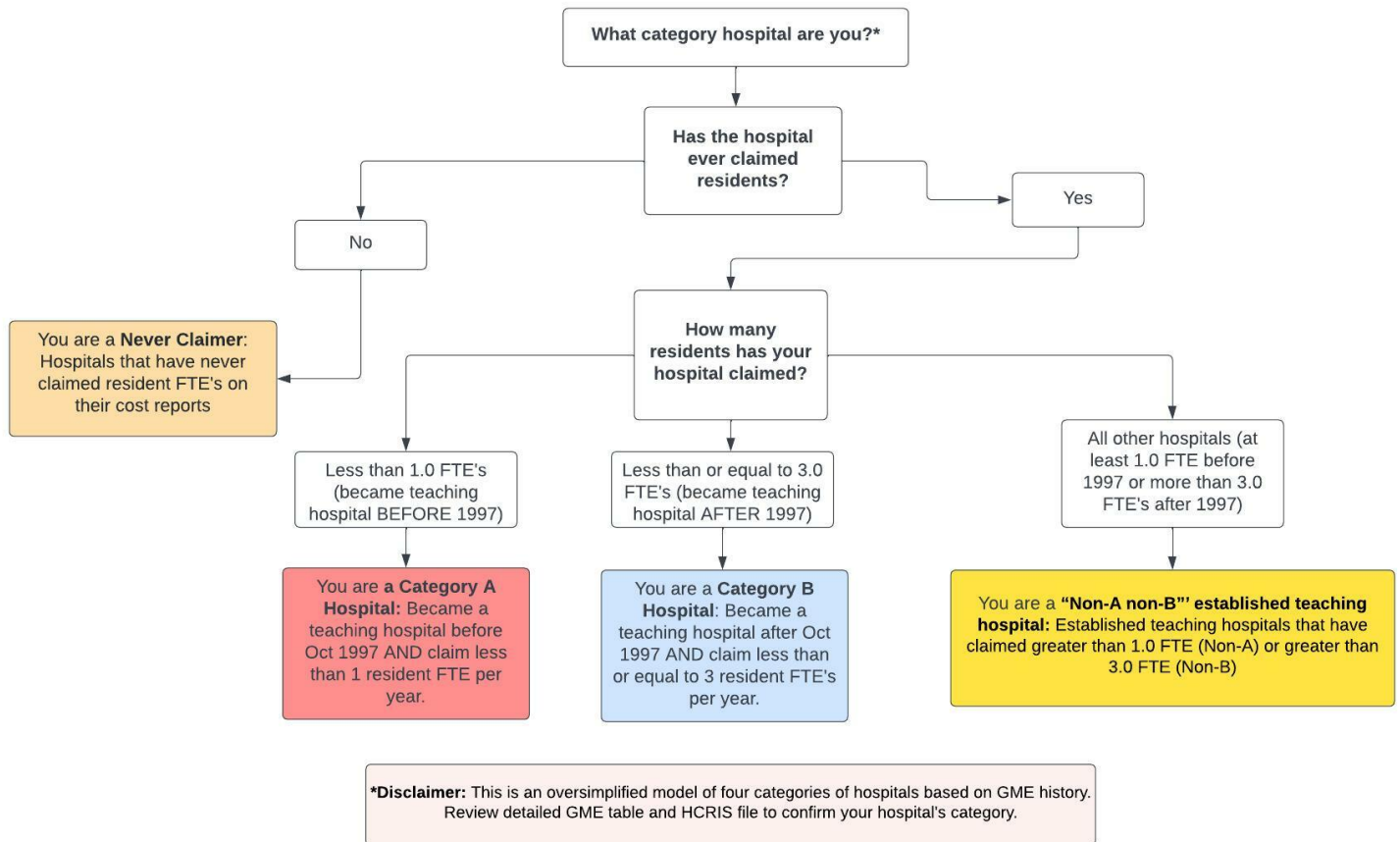
Section 131 GME Tables for Oklahoma

This report classifies each hospital in the state into four groups based on data provided by the Centers for Medicare & Medicaid Services to aid in determining a hospital's eligibility to revise certain GME parameters under Section 131 of the CAA. For more details, visit the CMS website here. Classifications were prepared by staff of the Rural Residency Planning and Development (RRPD) and Teaching Health Center Planning and Development (THCPD) Technical Assistance Centers using data provided by CMS; hospitals are encouraged to confirm all data presented. The tables below are presented as a screening, are not definitive, and may differ from the classifications determined by CMS, the MAC, or other regulatory bodies. Further information, including data, presentations, and tools are available at RuralGME.org

Overview

Hospitals — **with the exception of Critical Access Hospitals** – are classified into four categories based on their historical GME funding and expense. **Category A** and **Category B** Hospitals first claimed a few residents. Generally speaking, a Category A hospital first claimed fewer than 1.0 residents prior to October 1, 1997; a Category B hospital first claimed no more than 3.0 residents on or after October 1, 1997. **Never Claimer** hospitals have not claimed GME on a cost report since 1996. **All other hospitals** meet none of the three categories – we call these “Non-A Non-B Hospitals.” Note that **Critical Access Hospitals** are paid for GME by an entirely different mechanism and are omitted from all lists below; information about this is available at RuralGME.org. The following figure presents an oversimplified, high-level overview.

Overview of Categorization Process



We recommend State Offices of Rural Health encourage **Category A and Category B** hospitals to carefully review their categorization using the Rural GME HCRIS Data Tool, **Never Claimers** to verify that they indeed have not claimed GME, and **Non-A and Non-B Hospitals** to confirm that they do not meet the qualifications for Category A or Category B.

Further details for each category are provided below. Note that hospital names are truncated to 40 characters. An asterisk in the “PRA?” column denotes that the maximum PRA paid by the hospital is less than benchmark PRA for the region. Each table is sorted by the county of the hospital; for hospitals that could not be assigned to a county, the city of the mailing address is provided.

For All Hospital Types: If you check the HCRIS data and believe it is inaccurate then you must electronically submit complete and unambiguous documentation to your MAC **no later than July 1, 2022** contesting the HCRIS data.

1 Category A Hospitals

Category A: Hospitals that became teaching hospitals (set PRA and cap) before October 1997 where that PRA and cap (either or both of DGME and IME) were set based on an FTE of less than 1.0.

- Category A hospitals may be eligible to *reset their PRA* when they train 1.0 or more FTEs from either existing or new programs in the earliest cost reporting period beginning on or after December 27, 2020 and before December 27, 2025.
- Category A Hospitals may be eligible to *reset their resident cap* if they start a new residency program training at least 1.0 FTEs between December 27, 2020 and before December 27, 2025.

Next Step: Category A Hospitals should confirm the accuracy of their PRA/CAP and then may contact their MAC to request a PRA reset and/or resident cap reset before December 27, 2025.

Table 1: Category A

CCN	Name	County	PRA?	Max PRA
370032	ALLIANCEHEALTH DEACONESS	OKLAHOMA	*	84828

An asterisk in the PRA? column denotes that the maximum PRA paid by the hospital is less than benchmark PRA for the region.

2 Category B Hospitals

Category B: Hospitals that became teaching hospitals (set PRA and cap) after October 1997 through January 2021 where that PRA and cap (either or both of DGME and IME) were set based on an FTE of less than 3.0.

- Category B hospitals may be eligible to *reset their PRA* when they train 3.0 or more FTEs from either existing or new programs in the earliest cost reporting period beginning on or after December 27, 2020 and before December 27, 2025.
- Category B Hospitals may be eligible to *reset their resident cap* if they start a new residency program training at least 3.0 FTEs between December 27, 2020 and before December 27, 2025.

Next Step: Category B Hospitals should confirm the accuracy of their PRA/CAP and then may contact their MAC to request a PRA reset and/or resident cap reset before December 27, 2025.

Table 2: Category B

CCN	Name	County	PRA?	Max PRA
370056	COMANCHE COUNTY MEMORIAL HOSPITAL	City: LAWTON		137142
370014	ALLIANCEHEALTH DURANT	BRYAN		7763917
370089	NORTHEASTERN HEALTH SYSTEM	CHEROKEE		99623
370094	SSM HEALTH ST ANTHONY HOSPITAL - MIDWEST	OKLAHOMA	*	66548
370201	SURGICAL HOSPITAL OF OKLAHOMA	OKLAHOMA		153288
370190	SOUTHWESTERN REGIONAL MEDICAL CENTER, LL	TULSA		96549
370018	JANE PHILLIPS MEMORIAL MEDICAL CENTER, I	WASHINGTON	*	87209

An asterisk in the PRA? column denotes that the maximum PRA paid by the hospital is less than benchmark PRA for the region.

3 Never Claimer Hospitals

Never Claimers: Hospitals that have never claimed residents for GME payment on any cost report. This includes hospitals that have had documented resident rotators in the past that were not claimed to establish a Per Resident Amount (PRA), and also hospitals that have never trained residents. For those hospitals that *have* trained residents in the past and never reported them, there is a risk of inadvertently setting a new PRA of zero and of establishing a cap in the future if 1.0 or more FTE of residents are being trained in a fiscal cost report year after 12/27/2020. In some circumstances the data may be incorrect and should be contested by contacting the MAC.

- Check to confirm that you do not have a claimed PRA/cap for all years.
- If you are not training greater than 1.0 FTEs right now, you do not need to contact your MAC until you begin training 1.0 or more FTEs.

Next Step: Any hospital that is in this category of “Never Claimer” that has trained 1.0 or more FTE in any fiscal cost report year following 12/27/20 MUST begin claiming those resident FTE as of that cost report year. The documentation maintained by the hospital regarding the costs it incurred in training those FTE will establish the PRA for that hospital, and may or may not start the cap-setting period. Note that such a hospital that reports no costs is at high risk of establishing a PRA of ZERO, that will remain established into the future.

Table 3: Never Claimers

CCN	Name	County
370039	HILLCREST HOSPITAL CLAREMORE	City: CLAREMORE
370225	SUMMIT MEDICAL CENTER, LLC	City: EDMOND
370113	INTEGRIS GROVE HOSPITAL	City: GROVE
374017	WILLOW CREST HOSPITAL	City: MIAMI
372012	INSPIRE SPECIALTY HOSPITAL	City: MIDWEST CITY
373300	J D MCCARTY CENTER FOR CHILDREN	City: NORMAN
374025	OAKWOOD SPRINGS, LLC	City: OKLAHOMA CITY
370015	HILLCREST HOSPITAL PRYOR	City: PRYOR
370239	SAYRE COMMUNITY HOSPITAL	City: SAYRE
370103	SAYRE COMMUNITY HOSPITAL	City: SAYRE
370233	PINNACLE SPECIALTY HOSPITAL	City: TULSA
373035	PAM REHABILITATION HOSPITAL OF TULSA	City: TULSA
370072	LATIMER COUNTY GENERAL HOSPITAL	City: WILBURTON
370178	MEMORIAL HOSPITAL	ADAIR
370019	GREAT PLAINS REGIONAL MEDICAL CENTER	BECKHAM

Continued on next page

Table 3 – Continued from previous page

CCN	Name	County
370011	MERCY HOSPITAL EL RENO	CANADIAN
370211	INTEGRIS CANADIAN VALLEY HOSPITAL	CANADIAN
370047	MERCY HOSPITAL ARDMORE, INC	CARTER
370171	CHEROKEE NATION W W HASTINGS INDIAN HOSP	CHEROKEE
370100	CHOCTAW MEMORIAL HOSPITAL	CHOCTAW
372017	LANE FROST HEALTH AND REHABILITATION CEN	CHOCTAW
372021	NORMAN SPECIALTY HOSPITAL	CLEVELAND
374008	JIM TALIAFERRO COMM MENTAL HEALTH CTR	COMANCHE
370097	SOUTHWESTERN MEDICAL CENTER	COMANCHE
370170	LAWTON INDIAN HOSPITAL	COMANCHE
370065	CRAIG GENERAL HOSPITAL	CRAIG
370237	SAINT FRANCIS HOSPITAL VINITA, INC	CRAIG
370041	BRISTOW MEDICAL CENTER	CREEK
370240	INTEGRIS COMMUNITY HOSPITAL - COUNCIL CR	CULBERSON
370029	ALLIANCEHEALTH CLINTON	CUSTER
370007	NEWMAN MEMORIAL HOSPITAL	ELLIS
372016	INTEGRIS BASS PAVILION	GARFIELD
370214	LINDSAY MUNICIPAL HOSPITAL	GARVIN
370156	PAULS VALLEY HOSPITAL AUTHORITY	GARVIN
370054	GRADY MEMORIAL HOSPITAL	GRADY
370036	HARMON MEMORIAL HOSPITAL	HARMON
370022	JACKSON COUNTY MEMORIAL HOSPITAL AUTHORI	JACKSON
370030	STILLWATER MEDICAL-BLACKWELL	KAY
370006	PONCA CITY MEDICAL CENTER	KAY
370153	ELKVIEW GENERAL HOSPITAL	KIOWA
370172	CHOCTAW NATION HEALTH SERVICES AUTHORITY	LE FLORE
370158	PURCELL MUNICIPAL HOSPITAL	MCCLAIN
370048	MCCURTAIN MEMORIAL HOSPITAL	MCCURTAIN
370169	EPIC MEDICAL CENTER	MCINTOSH
370232	MUSKOGEE COMMUNITY HOSPITAL	MUSKOGEE
370025	SAINT FRANCIS HOSPITAL MUSKOGEE	MUSKOGEE
372022	CORNERSTONE SPECIALTY HOSPITALS MUSKOGEE	MUSKOGEE
370139	STILLWATER MEDICAL - PERRY	NOBLE
372005	OKC-AMG SPECIALTY HOSPITAL	OKLAHOMA
370222	MCBRIDE ORTHOPEDIC HOSPITAL	OKLAHOMA
372004	CURAHEALTH OKLAHOMA CITY	OKLAHOMA
370234	OKLAHOMA HEART HOSPITAL SOUTH, LLC	OKLAHOMA
370203	COMMUNITY HOSPITAL, LLC	OKLAHOMA
370220	ONECORE HEALTH	OKLAHOMA
373033	MERCY REHABILITATION HOSPITAL OKLAHOMA C	OKLAHOMA
370212	OKLAHOMA CENTER FOR ORTHOPAEDIC & MULTI-	OKLAHOMA
370206	OKLAHOMA SPINE HOSPITAL	OKLAHOMA
370236	INTEGRIS HEALTH EDMOND	OKLAHOMA
370199	LAKESIDE WOMEN'S HOSPITAL, A MEMBER OF I	OKLAHOMA
372009	SELECT SPECIALTY HOSPITAL - OKLAHOMA CIT	OKLAHOMA
373025	VALIR REHABILITATION HOSPITAL OF OKC, LL	OKLAHOMA
374023	CEDAR RIDGE BEHAVIORAL HOSPITAL	OKLAHOMA
370192	NORTHWEST SURGICAL HOSPITAL	OKLAHOMA
370215	OKLAHOMA HEART HOSPITAL, LLC	OKLAHOMA
370183	HILLCREST HOSPITAL HENRYETTA	OKMULGEE
373026	MUSCOGEE (CREEK) NATION PHYSICAL REHABIL	OKMULGEE
372023	MUSCOGEE (CREEK) NATION LONG TERM ACUTE	OKMULGEE
370057	MUSCOGEE (CREEK) NATION MEDICAL CENTER	OKMULGEE
370004	INTEGRIS MIAMI HOSPITAL	OTTAWA

Continued on next page

Table 3 – Continued from previous page

CCN	Name	County
370099	HILLCREST HOSPITAL CUSHING	PAYNE
370049	STILLWATER MEDICAL CENTER	PAYNE
374006	CARL ALBERT COMMUNITY MENTAL HEALTH CENT	PITTSBURGH
374016	ROLLING HILLS HOSPITAL, LLC	PONTOC
370180	CHICKASAW NATION MEDICAL CENTER	PONTOTOC
370020	MERCY HOSPITAL ADA	PONTOTOC
370149	SSM HEALTH ST ANTHONY HOSPITAL - SHAWNEE	POTTAWATOMIE
372019	CORNERSTONE SPECIALTY HOSPITALS SHAWNEE	POTTAWATOMIE
370083	PUSHMATAHA HOSPITAL	PUSHMATAHA
370173	CLAREMORE INDIAN HOSPITAL	ROGERS
370229	ALLIANCEHEALTH SEMINOLE	SEMINOLE
370112	SEQUOYAH COUNTY-CITY OF SALLISAW HOSPITA	SEQUOYAH
370023	DUNCAN REGIONAL HOSPITAL, INC	STEPHENS
370138	MEMORIAL HOSPITAL OF TEXAS COUNTY AUTHOR	TEXAS
370051	MEMORIAL HOSPITAL & PHYSICIAN GROUP	TILLMAN
370202	HILLCREST HOSPITAL SOUTH	TULSA
370235	ASCENSION ST JOHN BROKEN ARROW	TULSA
374012	BROOKHAVEN HOSPITAL, LLC	TULSA
370227	ST JOHN OWASSO	TULSA
370218	SAINT FRANCIS HOSPITAL SOUTH, LLC	TULSA
373034	ST JOHN REHAB HOSPITAL, AN AFFILIATE OF	TULSA
374026	TULSA CENTER FOR BEHAVIORAL HEALTH	TULSA
372011	TULSA-AMG SPECIALTY HOSPITAL, LLC	TULSA
370210	OKLAHOMA SURGICAL HOSPITAL, LLC	TULSA
372018	PAM SPECIALTY HOSPITAL OF TULSA	TULSA
372007	SELECT SPECIALTY HOSPITAL - TULSA/MIDTOW	TULSA
370228	BAILEY MEDICAL CENTER, LLC	TULSA
370216	TULSA SPINE & SPECIALTY HOSPITAL	TULSA
374024	SHADOW MOUNTAIN BEHAVIORAL HEALTH SYSTEM	TULSA
370166	WAGONER COMMUNITY HOSPITAL	WAGONER
372014	CONTINUOUS CARE CENTER OF BARTLESVILLE	WASHINGTON
370080	SHARE MEDICAL CENTER	WOODS
374001	NORTHWEST CENTER FOR BEHAVIORAL HEALTH (WOODWARD
370002	ALLIANCEHEALTH WOODWARD	WOODWARD

4 All Other Hospitals

“Non-A Non-B” established teaching hospitals: Hospitals that don’t appear to qualify for a PRA/cap reset because they have claimed FTE greater than the eligibility criteria for category A (at least 1.0 FTE) or category B (more than 3.0 FTE).

Next Step: “Non-A Non-B” should confirm that they are not in fact eligible for a PRA/cap reset.

Table 4: Neither Category A nor Category B

CCN	Name	County	PRA?	Max PRA
370105	BONE AND JOINT HOSPITAL	City: OKLAHOMA CITY	*	75437
370093	O U MEDICAL CENTER	City: OKLAHOMA CITY		97318
370035	UNIVERSITY HOSPITALS, THE	City: OKLAHOMA CITY	*	60537
370123	ST MICHAEL HOSPITAL	City: OKLAHOMA CITY	*	59076

Continued on next page

Table 4 – Continued from previous page

CCN	Name	County	Review PRA?	Max PRA
370141	DOCTORS HOSPITAL	City: TULSA	*	39358
374005	PARKSIDE	City: TULSA	*	55282
374000	GRIFFIN MEMORIAL HOSPITAL	CLEVELAND		144237
370008	NORMAN REGIONAL	CLEVELAND	*	87575
370026	ST MARY'S REGIONAL MEDICAL CENTER	GARFIELD	*	1
370016	INTEGRIS BASS BAPTIST HEALTH CENTER	GARFIELD	*	81560
370040	EASTERN OKLAHOMA MEDICAL CENTER	LEFLORE	*	0
370013	MERCY HOSPITAL OKLAHOMA CITY, INC	OKLAHOMA	*	77695
370028	INTEGRIS BAPTIST MEDICAL CENTER, INC	OKLAHOMA	*	84591
370037	SSM HEALTH ST ANTHONY HOSPITAL - OKLAHOM	OKLAHOMA	*	87494
370106	INTEGRIS SOUTHWEST MEDICAL CENTER	OKLAHOMA COUNTY	*	89987
370034	MCALISTER REGIONAL HEALTH CENTER	PITTSBURG	*	88364
374021	PARKSIDE, INC	TULSA	*	60799
374020	LAUREATE PSYCHIATRIC CLINIC AND HOSPITAL	TULSA	*	86730
370091	SAINT FRANCIS HOSPITAL, INC	TULSA	*	91292
370114	ASCENSION ST JOHN MEDICAL CENTER	TULSA	*	86141
370001	HILLCREST MEDICAL CENTER	TULSA	*	84615
370078	OKLAHOMA STATE UNIVERSITY MEDICAL CENTER	TULSA	*	85216

An asterisk in the PRA? column denotes that the maximum PRA paid by the hospital is less than benchmark PRA for the region.

Additional Resources:

- **Rural GME HCRIS Data Tool:** Tool used to determine whether a hospital potentially qualifies for a PRA reset.
- **CMS Provider Number Lookup:** Tool used to determine your hospital provider number. You can also find your provider number using the Rural GME HCRIS Data Tool in the state list.
- **Impact of CMS Rule Changes on Rural GME: A Deeper Dive into Section 131:** RRPD-TAC webinar on Section 131.
- **CMS Guidance on Section 131:** FAQ published by CMS on hospitals eligible to reset PRA/Cap.
- **How to contact a Medicare Administrative Contractor (MAC):** CMS website with MAC contact information.
- **The FY22 IPPS Final Rule,** beginning page 73416, contains the formal regulations.

Acknowledgement

Disclaimer: The grant program is supported by the Health Resources and Services Administration of the U.S. Department of Health and Human Services under cooperative agreement #UK6RH32513. The content does not necessarily represent the official views of, nor an endorsement, by HRSA, HHS, or the U.S. Government.