

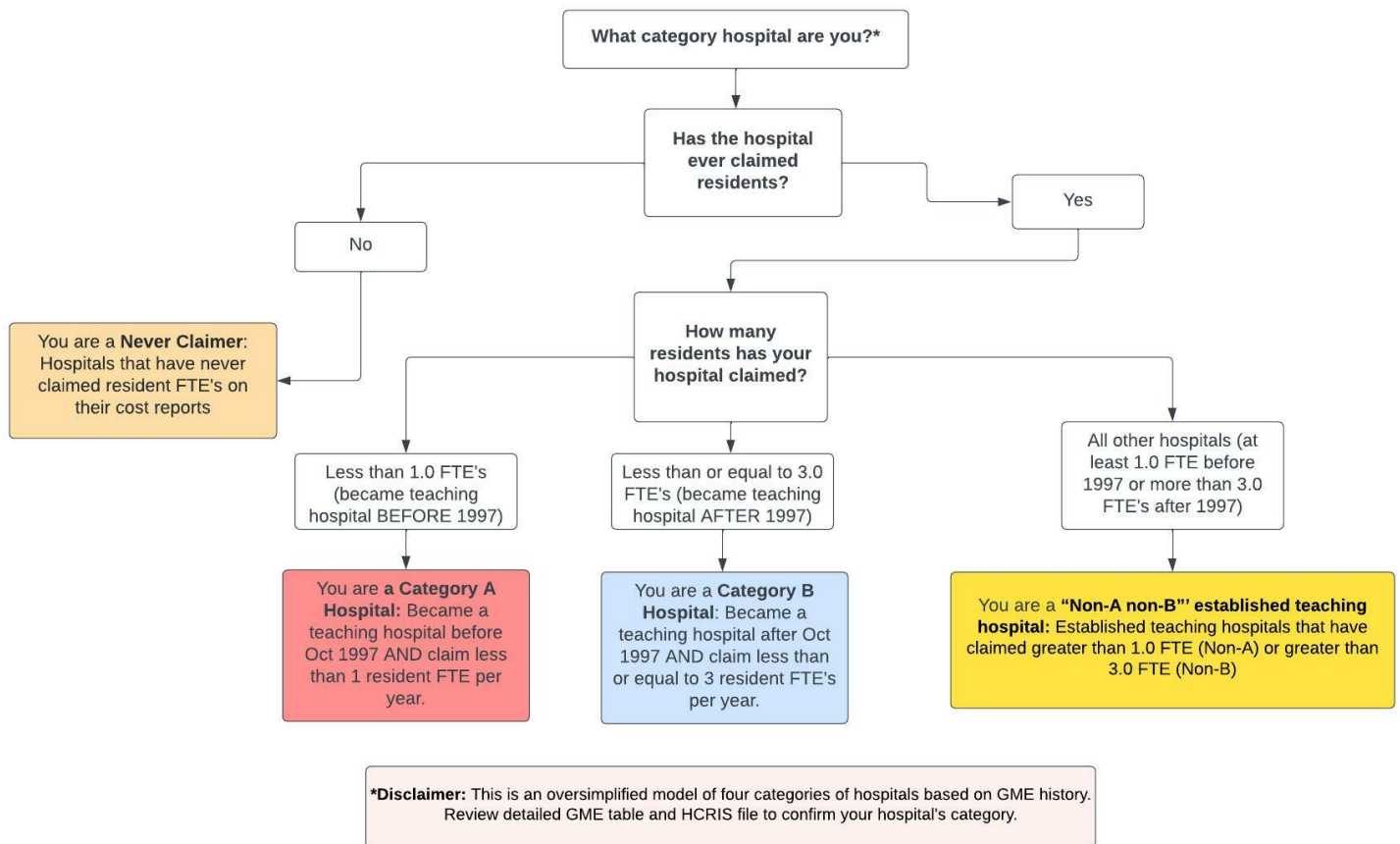
## Section 131 GME Tables for Ohio

This report classifies each hospital in the state into four groups based on data provided by the Centers for Medicare & Medicaid Services to aid in determining a hospital's eligibility to revise certain GME parameters under Section 131 of the CAA. For more details, visit the CMS website here. Classifications were prepared by staff of the Rural Residency Planning and Development (RRPD) and Teaching Health Center Planning and Development (THCPD) Technical Assistance Centers using data provided by CMS; hospitals are encouraged to confirm all data presented. The tables below are presented as a screening, are not definitive, and may differ from the classifications determined by CMS, the MAC, or other regulatory bodies. Further information, including data, presentations, and tools are available at RuralGME.org

### Overview

Hospitals — **with the exception of Critical Access Hospitals** – are classified into four categories based on their historical GME funding and expense. **Category A** and **Category B** Hospitals first claimed a few residents. Generally speaking, a Category A hospital first claimed fewer than 1.0 residents prior to October 1, 1997; a Category B hospital first claimed no more than 3.0 residents on or after October 1, 1997. **Never Claimer** hospitals have not claimed GME on a cost report since 1996. **All other hospitals** meet none of the three categories – we call these “Non-A Non-B Hospitals.” Note that **Critical Access Hospitals** are paid for GME by an entirely different mechanism and are omitted from all lists below; information about this is available at RuralGME.org. The following figure presents an oversimplified, high-level overview.

### Overview of Categorization Process



We recommend State Offices of Rural Health encourage **Category A and Category B** hospitals to carefully review their categorization using the Rural GME HCRIS Data Tool, **Never Claimers** to verify that they indeed have not claimed GME, and **Non-A and Non-B Hospitals** to confirm that they do not meet the qualifications for Category A or Category B.

Further details for each category are provided below. Note that hospital names are truncated to 40 characters. An asterisk in the “PRA?” column denotes that the maximum PRA paid by the hospital is less than benchmark PRA for the region. Each table is sorted by the county of the hospital; for hospitals that could not be assigned to a county, the city of the mailing address is provided.

**For All Hospital Types:** If you check the HCRIS data and believe it is inaccurate then you must electronically submit complete and unambiguous documentation to your MAC **no later than July 1, 2022** contesting the HCRIS data.

## 1 Category A Hospitals

**Category A:** Hospitals that became teaching hospitals (set PRA and cap) before October 1997 where that PRA and cap (either or both of DGME and IME) were set based on an FTE of less than 1.0.

- Category A hospitals may be eligible to *reset their PRA* when they train 1.0 or more FTEs from either existing or new programs in the earliest cost reporting period beginning on or after December 27, 2020 and before December 27, 2025.
- Category A Hospitals may be eligible to *reset their resident cap* if they start a new residency program training at least 1.0 FTEs between December 27, 2020 and before December 27, 2025.

*Next Step:* Category A Hospitals should confirm the accuracy of their PRA/CAP and then may contact their MAC to request a PRA reset and/or resident cap reset before December 27, 2025.

Table 1: Category A

CCN	Name	County	PRA?	Max PRA
364029	WINDSOR LAURELWOOD CENTER FOR BEHAVIORIAL	City: WILLOUGHBY	*	78015
360212	LAKWOOD HOSPITAL	CUYAHOGA	*	63235
360078	UNIVERSITY HOSPITALS PORTAGE MEDICAL CEN	PORTAGE	*	92049

An asterisk in the PRA? column denotes that the maximum PRA paid by the hospital is less than benchmark PRA for the region.

## 2 Category B Hospitals

**Category B:** Hospitals that became teaching hospitals (set PRA and cap) after October 1997 through January 2021 where that PRA and cap (either or both of DGME and IME) were set based on an FTE of less than 3.0.

- Category B hospitals may be eligible to *reset their PRA* when they train 3.0 or more FTEs from either existing or new programs in the earliest cost reporting period beginning on or after December 27, 2020 and before December 27, 2025.
- Category B Hospitals may be eligible to *reset their resident cap* if they start a new residency program training at least 3.0 FTEs between December 27, 2020 and before December 27, 2025.

*Next Step:* Category B Hospitals should confirm the accuracy of their PRA/CAP and then may contact their MAC to request a PRA reset and/or resident cap reset before December 27, 2025.

Table 2: Category B

CCN	Name	County	PRA?	Max PRA
360102	DEACONESS HOSPITAL	City: CLEVELAND	*	49334
360066	MERCY HEALTH-ST RITA'S MEDICAL CENTER	ALLEN		129763
360096	EAST LIVERPOOL CITY HOSPITAL	COLUMBIANA	*	100000
360115	UHHS BEDFORD MEDICAL CENTER	CUYAHOGA	*	95450
360359	UNIVERSITY HOSPITALS AHUJA MEDICAL CENTE	CUYAHOGA	*	104790
363036	UNIVERSITY HOSPITALS REHABILITATION HOSP	CUYAHOGA		154287
360072	FAIRFIELD MEDICAL CENTER	FAIRFIELD	*	106862
360054	HOLZER MEDICAL CENTER	GALLIA	*	98002
360192	UH GEAUGA MEDICAL CENTER	GEAUGA	*	109249
360360	SOIN MEDICAL CENTER	GREENE		120984
360098	LAKE HEALTH	LAKE	*	0
360197	MARY RUTAN HOSPITAL	LOGAN	*	110767
360172	MERCY REGIONAL MEDICAL CENTER	LORAIN	*	94081
360262	MERCY ST ANNE HOSPITAL	LUCAS		126378
362038	ADVANCED SPECIALTY HOSPITAL OF TOLEDO	LUCAS	*	88069
360131	ALLIANCE COMMUNITY HOSPITAL	STARK	*	113130
360076	ATRIUM MEDICAL CENTER	WARREN	*	0

An asterisk in the PRA? column denotes that the maximum PRA paid by the hospital is less than benchmark PRA for the region.

### 3 Never Claimer Hospitals

**Never Claimers:** Hospitals that have never claimed residents for GME payment on any cost report. This includes hospitals that have had documented resident rotators in the past that were not claimed to establish a Per Resident Amount (PRA), and also hospitals that have never trained residents. For those hospitals that *have* trained residents in the past and never reported them, there is a risk of inadvertently setting a new PRA of zero and of establishing a cap in the future if 1.0 or more FTE of residents are being trained in a fiscal cost report year after 12/27/2020. In some circumstances the data may be incorrect and should be contested by contacting the MAC.

- Check to confirm that you do not have a claimed PRA/cap for all years.
- If you are not training greater than 1.0 FTEs right now, you do not need to contact your MAC until you begin training 1.0 or more FTEs.

*Next Step:* Any hospital that is in this category of “Never Claimer” that has trained 1.0 or more FTE in any fiscal cost report year following 12/27/20 MUST begin claiming those resident FTE as of that cost report year. The documentation maintained by the hospital regarding the costs it incurred in training those FTE will establish the PRA for that hospital, and may or may not start the cap-setting period. Note that such a hospital that reports no costs is at high risk of establishing a PRA of ZERO, that will remain established into the future.

Table 3: Never Claimers

CCN	Name	County
363304	CLEVELAND CLINIC CHILDREN'S HOSPITAL FOR	City: CLEVELAND
364045	TORII BEHAVIORAL HEALTH	City: COLUMBUS
360241	EDWIN SHAW REHAB INSTITUTE	City: CUYAHOGA FALLS
363308	SHRINERS HOSPITALS FOR CHILDREN	City: DAYTON
364063	GEORGETOWN BEHAVIORAL HOSPITAL	City: GEORGETOWN

*Continued on next page*

Table 3 – Continued from previous page

CCN	Name	County
360258	FOREST HEALTH MEDICAL CENTER OF COLUMBUS	City: GROVEPORT
361991	GLENMONT	City: HILLIARD
360080	EAST OHIO REGIONAL HOSPITAL	City: MARTINS FERRY
364036	ARROWHEAD BEHAVIORAL HEALTH	City: MAUMEE
360263	INSTITUTE FOR ORTHOPAEDIC SURGERY	ALLEN
362020	KINDRED HOSPITAL LIMA	ALLEN
360009	LIMA MEMORIAL HEALTH SYSTEM	ALLEN
360002	UNIVERSITY HOSPITALS SAMARITAN MEDICAL C	ASHLAND
364054	GENERATIONS BEHAVIORAL HEALTH - GENEVA	ASHTABULA
360125	ASHTABULA COUNTY MEDICAL CENTER	ASHTABULA
360245	GLENBEIGH HEALTH SOURCES	ASHTABULA
364015	APPALACHIAN BEHAVIORAL HEALTH CARE	ATHENS
360153	BELMONT COMMUNITY HOSPITAL	BELMONT
362035	ACUITY SPECIALTY HOSPITAL OHIO VALLEY	BELMONT
364058	SUN BEHAVIORAL COLUMBUS	BROWN
360116	SOUTHWEST REGIONAL MEDICAL CENTER	BROWN
360056	MERCY HEALTH - FAIRFIELD HOSPITAL	BUTLER
360271	UNIVERSITY POINTE SURGICAL HOSPITAL	BUTLER
360132	FORT HAMILTON HUGHES MEMORIAL HOSPITAL	BUTLER
360269	BUTLER COUNTY MEDICAL CENTER	BUTLER
360046	MCCULLOUGH-HYDE MEMORIAL HOSPITAL	BUTLER
360354	WEST CHESTER HOSPITAL	BUTLER
360355	OHIO VALLEY SURGICAL HOSPITAL	CLARK
364040	MENTAL HEALTH SERVICES FOR CLARK AND MAD	CLARK
360086	SPRINGFIELD REGIONAL MEDICAL CENTER	CLARK
360236	MERCY HEALTH - CLERMONT HOSPITAL	CLERMONT
360185	SALEM REGIONAL MEDICAL CENTER	COLUMBIANA
360109	COSHOCTON REGIONAL MEDICAL CENTER	COSHOCTON
360082	EUCLID HOSPITAL	CUYAHOGA
360367	LAKE HEALTH BEACHWOOD MEDICAL CENTER	CUYAHOGA
360143	MARYMOUNT HOSPITAL	CUYAHOGA
360364	CLEVELAND CLINIC AVON HOSPITAL	CUYAHOGA
362026	SELECT SPECIALTY HOSPITAL- CLEVELAND FAI	CUYAHOGA
362015	GRACE HOSPITAL	CUYAHOGA
362029	REGENCY HOSPITAL OF CLEVELAND EAST	CUYAHOGA
364053	HIGHLAND SPRINGS	CUYAHOGA
360044	WAYNE HOSPITAL	DARKE
360270	MERCY HEALTH - DEFIANCE HOSPITAL	DEFIANCE
363042	MOUNT CARMEL REHABILITATION HOSPITAL, AN	DELAWARE
360210	GRADY MEMORIAL HOSPITAL	DELAWARE
364007	TWIN VALLEY BEHAVIORAL HEALTHCARE	FRANKLIN
363037	OHIOHEALTH REHABILITATION HOSPITAL	FRANKLIN
364041	OHIO HOSPITAL FOR PSYCHIATRY	FRANKLIN
362037	SELECT SPECIALTY HOSPITAL COLUMBUS	FRANKLIN
360266	MOUNT CARMEL NEW ALBANY SURGICAL HOSPITA	FRANKLIN
360247	WOODS AT PARKSIDE,THE	FRANKLIN
362022	SELECT SPECIALTY HOSPITAL-COLUMBUS, INC	FRANKLIN
364061	RIVER VISTA HEALTH AND WELLNESS LLC	FRANKLIN
364049	DUBLIN SPRINGS	FRANKLIN
360358	DILEY RIDGE MEDICAL CENTER	FRANKLIN
364062	MOUNT CARMEL BEHAVIORAL HEALTH	FRANKLIN
362014	HEATHER HILL CARE COMMUNITIES	GEAUGA
364027	CAMBRIDGE BEHAVIORAL HOSPITAL	GUERNSEY
360203	SOUTHEASTERN OHIO REGIONAL MEDICAL CENTE	GUERNSEY

Continued on next page

Table 3 – Continued from previous page

CCN	Name	County
360350	EVENDALE MEDICAL CENTER	HAMILTON
364057	BLUERIDGE VISTA HEALTH AND WELLNESS	HAMILTON
363041	TRIHEALTH REHABILITATION HOSPITAL LLC	HAMILTON
363034	ENCOMPASS HEALTH REHABILITATION HOSPITAL	HAMILTON
364056	ASSURANCE HEALTH CINCINNATI LLC	HAMILTON
362019	SELECT SPECIALTY HOSPITAL-CINCINNATI, IN	HAMILTON
364046	BRIDGEWELL HOSPITAL OF CINCINNATI	HAMILTON
364051	BECKETT SPRINGS	HAMILTON
360001	MERCY HEALTH-ANDERSON HOSPITAL	HAMILTON
362034	REGENCY HOSPITAL OF CINCINNATI, LLC	HAMILTON
360362	TRIHEALTH EVENDALE HOSPITAL	HAMILTON
364035	SUMMIT BEHAVIORAL HEALTHCARE	HAMILTON
360113	MERCY FRANCISCAN HOSPITAL WESTERN HILLS	HAMILTON
360095	BLANCHARD VALLEY HOSPITAL	HANCOCK
360148	POMERENE HOSPITAL	HOLMES
360065	FISHER-TITUS HOSPITAL	HURON
362039	LIFE LINE HOSPITAL	JEFFERSON
360040	KNOX COMMUNITY HOSPITAL	KNOX
360261	THREE GABLES SURGERY CENTER	LAWRENCE
360218	LICKING MEMORIAL HOSPITAL	LICKING
360347	MEDICAL CENTER OF NEWARK LLC	LICKING
362031	SELECT SPECIALTY HOSPITAL SOUTHEAST OHIO	LICKING
363038	CLEVELAND CLINIC REHABILITATION HOSPITAL	LORAIN
364052	CLEAR VISTA HEALTH & WELLNESS	LORAIN
360130	AMHERST HOSPITAL	LORAIN
363039	UNIVERSITY HOSPITALS AVON REHABILITATION	LORAIN
362025	COMMUNITY SPECIALTY HOSPITAL	LORAIN
360145	UNIVERSITY HOSPITALS - ELYRIA MEDICAL CE	LORAIN
362036	REGENCY HOSPITAL OF TOLEDO	LUCAS
363040	REHABILITATION HOSPITAL OF NORTHWEST OHI	LUCAS
360259	BAY PARK COMMUNITY HOSPITAL	LUCAS
364014	NORTHWEST OHIO PSYCHIATRIC HOSPITAL	LUCAS
360189	MADISON HEALTH	MADISON
360363	SELECT SPECIALTY HOSPITAL YOUNGSTOWN (BO	MAHONING
360352	SURGICAL HOSPITAL AT SOUTHWOODS	MAHONING
363032	GREENBRIAR REHABILITATION HOSPITAL	MAHONING
362024	SELECT SPECIALTY HOSPITAL - YOUNGSTOWN	MAHONING
362023	VIBRA HOSPITAL OF MAHONING VALLEY	MAHONING
362040	SELECT SPECIALTY HOSPITAL YOUNGSTOWN	MAHONING
360011	MARION GENERAL HOSPITAL	MARION
360091	MEDINA HOSPITAL	MEDINA
360195	SUMMA WADSWORTH-RITTMAN HOSPITAL	MEDINA
360058	MERCER COUNTY JOINT TOWNSHIP COMMUNITY H	MERCER
360368	KETTERING MEDICAL CENTER	MIAMI
360174	UPPER VALLEY MEDICAL CENTER	MIAMI
360274	MEDICAL CENTER AT ELIZABETH PLACE	MONTGOMERY
362028	PAM SPECIALTY HOSPITAL OF DAYTON	MONTGOMERY
364048	HAVEN BEHAVIORAL HOSPITAL OF DAYTON	MONTGOMERY
363033	THE REHABILITATION INSTITUTE OF OHIO	MONTGOMERY
364050	ACCESS HOSPITAL DAYTON, LLC	MONTGOMERY
362033	KINDRED HOSPITALS-DAYTON	MONTGOMERY
360039	GENESIS HOSPITAL	MUSKINGUM
360365	AVITA ONTARIO	RICHLAND
360118	OHIOHEALTH MANSFIELD HOSPITAL	RICHLAND

Continued on next page

Table 3 – Continued from previous page

CCN	Name	County
362021	KINDRED HOSPITAL CENTRAL OHIO	RICHLAND
360356	PHYSICIAN'S CHOICE HOSPITAL - FREMONT, L	SANDUSKY
362007	EDEN SPRINGS HEALTHCARE CENTER LLC	SANDUSKY
360107	BELLEVUE HOSPITAL	SANDUSKY
360156	MEMORIAL HOSPITAL	SANDUSKY
360361	KINGS DAUGHTERS MEDICAL CENTER OHIO	SCIOTO
360089	MERCY HEALTH - TIFFIN HOSPITAL	SENECA
364055	SOJOURN AT SENECA	SENECA
360013	WILSON MEMORIAL HOSPITAL	SHELBY
362016	SELECT SPECIALTY HOSPITAL-NORTHEAST OHIO	STARK
362032	AULTMAN SPECIALTY HOSPITAL	STARK
364031	HEARTLAND BEHAVIORAL HEALTHCARE	STARK
360351	CRYSTAL CLINIC ORTHOPAEDIC CENTER	SUMMIT
362027	SELECT SPECIALTY HOSPITAL-AKRON	SUMMIT
364059	ASSURANCE HEALTH HUDSON LLC	SUMMIT
364011	NORTHCOAST BEHAVIORAL HEALTHCARE NORTHFI	SUMMIT
363035	SUMMA REHAB HOSPITAL	SUMMIT
363026	HILLSIDE REHABILITATION HOSPITAL, INC	TRUMBULL
364060	GENERATIONS BEHAVIORAL HEALTH-YOUNGSTOWN	TRUMBULL
360010	UNION HOSPITAL	TUSCARAWAS
364042	TEN LAKES CENTER, LLC	TUSCARAWAS
360092	MEMORIAL HOSPITAL	UNION
364047	RIDGEVIEW BEHAVIORAL HOSPITAL	VAN WERT
360071	VAN WERT COUNTY HOSPITAL	VAN WERT
364044	LINDNER CENTER OF HOPE	WARREN
360036	WOOSTER COMMUNITY HOSPITAL	WAYNE
360121	COMMUNITY HOSPITALS AND WELLNESS CENTERS	WILLIAMS

## 4 All Other Hospitals

**“Non-A Non-B” established teaching hospitals:** Hospitals that don't appear to qualify for a PRA/cap reset because they have claimed FTE greater than the eligibility criteria for category A (at least 1.0 FTE) or category B (more than 3.0 FTE).

*Next Step:* “Non-A Non-B” should confirm that they are not in fact eligible for a PRA/cap reset.

Table 4: Neither Category A nor Category B

CCN	Name	County	PRA?	Max PRA
360045	COLUMBIA SAINT LUKE'S MEDICAL CENTER	City: CLEVELAND	*	102228
360037	ST VINCENT CHARITY MEDICAL CENTER	City: CLEVELAND		145806
360049	UNIV HOSP HEALTH SYS ST MICHAEL HOSP	City: CLEVELAND	*	65461
360062	OHIO STATE UNIVERSITY HOSPITAL EAST,THE	City: COLUMBUS	*	91951
360031	COLUMBUS COMMUNITY HOSPITAL	City: COLUMBUS	*	62253
360253	DAYTON HEART HOSPITAL	City: DAYTON		
360018	FRANCISCAN MEDICAL CTR-DAYTON CAMPUS	City: DAYTON	*	103530
360178	SELBY GENERAL HOSPITAL	City: MARIETTA	*	65450
360067	DOCTORS HOSPITAL OF NELSONVILLE	City: NELSONVILLE	*	54152
360034	DUNLAP MEMORIAL HOSPITAL	City: ORRVILLE	*	67510
360094	RIVERSIDE MERCY HOSPITAL	City: TOLEDO	*	64109

*Continued on next page*



Table 4 – Continued from previous page

CCN	Name	County	Review PRA?	Max PRA
360055	TRUMBULL REGIONAL MEDICAL CENTER	City: WARREN	*	93116
364003	HARDING HOSP	City: WORTHINGTON	*	29153
363307	TOD CHILDRENS HOSPITAL	City: YOUNGSTOWN	*	61957
360126	YOUNGSTOWN OSTEOPATHIC HOSPITAL	City: YOUNGSTOWN	*	45657
360014	OHIOHEALTH O'BLENESS HOSPITAL	ATHENS	*	92939
360032	GRAND LAKE HEALTH SYSTEM	AUGLAIZE	*	78594
360175	CLINTON MEMORIAL HOSPITAL	CLINTON	*	95243
360144	SOUTH POINTE HOSPITAL	CUYAHOGA	*	92049
360041	PARMA COMMUNITY GENERAL HOSPITAL	CUYAHOGA	*	104790
360059	METROHEALTH SYSTEM	CUYAHOGA		146851
360101	HURON HOSPITAL	CUYAHOGA	*	87193
360077	FAIRVIEW HOSPITAL	CUYAHOGA	*	92049
360123	UH ST JOHN MEDICAL CENTER	CUYAHOGA	*	108890
360155	SOUTHWEST GENERAL HEALTH CENTER	CUYAHOGA	*	78135
360180	CLEVELAND CLINIC	CUYAHOGA	*	92049
360137	UNIVERSITY HOSPITALS OF CLEVELAND	CUYAHOGA	*	96656
363302	RAINBOW BABIES AND CHILDRENS HOSPITAL	CUYAHOGA	*	96656
360075	UH REGIONAL HOSPITALS	CUYAHOGA		130025
360230	HILLCREST HOSPITAL	CUYAHOGA	*	92049
360087	LUTHERAN HOSPITAL	CUYAHOGA		137554
360025	FIRELANDS REGIONAL MEDICAL CENTER	ERIE	*	101342
360348	DUBLIN METHODIST HOSPITAL	FRANKLIN	*	107480
360006	RIVERSIDE METHODIST HOSPITAL	FRANKLIN	*	92939
363305	NATIONWIDE CHILDREN'S HOSPITAL	FRANKLIN	*	92049
360035	MOUNT CARMEL EAST & WEST	FRANKLIN	*	92939
360012	MOUNT CARMEL ST ANN'S	FRANKLIN	*	94831
360242	JAMES CANCER HOSPITAL & SOLOVE RESEARCH	FRANKLIN	*	92939
360152	DOCTORS HOSPITAL	FRANKLIN	*	92578
360017	GRANT MEDICAL CENTER	FRANKLIN		144231
360085	OHIO STATE UNIVERSITY STATE HEALTH SYSTE	FRANKLIN	*	100872
360026	GREENE MEMORIAL HOSPITAL	GREENE	*	97816
360134	GOOD SAMARITAN HOSPITAL	HAMILTON		150722
362004	DRAKE CENTER INC	HAMILTON	*	92939
360179	BETHESDA NORTH	HAMILTON		137030
360234	MERCY HEALTH - WEST HOSPITAL	HAMILTON	*	101596
360163	CHRIST HOSPITAL	HAMILTON		118865
363300	CINCINNATI CHILDREN'S HOSPITAL MEDICAL C	HAMILTON	*	92939
360003	UNIVERSITY OF CINCINNATI MEDICAL CENTER,	HAMILTON	*	96155
360016	THE JEWISH HOSPITAL-MERCY HEALTH	HAMILTON	*	109672
360211	TRINITY MEDICAL CTR EAST & TRINITY MEDICA	JEFFERSON	*	0
360068	PROMEDICA TOLEDO HOSPITAL	LUCAS		154248
360090	ST LUKE'S HOSPITAL	LUCAS		128689
360048	UNIVERSITY OF TOLEDO MEDICAL CENTER	LUCAS	*	92939
360074	FLOWER HOSPITAL	LUCAS		149170
360081	MERCY HEALTH - ST CHARLES HOSPITAL	LUCAS		125629
360112	MERCY ST VINCENT MEDICAL CENTER	LUCAS		152868
360141	STEWART NORTHSIDE MEDICAL CENTER, INC	MAHONING	*	89297
360064	ST ELIZABETH YOUNGSTOWN HOSPITAL	MAHONING	*	92049
360276	HMHP ST ELIZABETH BOARDMAN HEALTH CENTER	MAHONING	*	92049
364038	BELMONT PINES HOSPITAL	MAHONING	*	0
360239	SYCAMORE MEDICAL CENTER	MONTGOMERY		126726
360051	MIAMI VALLEY HOSPITAL	MONTGOMERY		129438
360133	GRANDVIEW HOSPITAL & MEDICAL CENTER	MONTGOMERY	*	93404
363306	DAYTON CHILDRENS HOSPITAL	MONTGOMERY	*	90769

Continued on next page

Table 4 – Continued from previous page

CCN	Name	County	Review PRA?	Max PRA
360052	GOOD SAMARITAN HOSPITAL	MONTGOMERY		148757
360079	KETTERING MEDICAL CENTER	MONTGOMERY		151606
360170	BERGER HOSPITAL	PICKAWAY	*	38842
360159	ADENA REGIONAL MEDICAL CENTER	ROSS	*	100523
360008	SOUTHERN OHIO MEDICAL CENTER	SCIOTO	*	106155
360084	AULTMAN HOSPITAL	STARK	*	113165
360151	AFFINITY MEDICAL CENTER	STARK	*	89229
360070	MERCY MEDICAL CENTER	STARK		145194
360020	SUMMA HEALTH SYSTEM	SUMMIT		120038
360019	SUMMA BARBERTON HOSPITAL	SUMMIT		136555
360150	SUMMA WESTERN RESERVE HOSPITAL	SUMMIT	*	91970
360027	AKRON GENERAL MEDICAL CENTER	SUMMIT	*	100373
363303	AKRON CHILDREN'S HOSPITAL	SUMMIT	*	92049
360161	MH ST JOSEPH WARREN HOSPITAL	TRUMBULL	*	92049
360147	MARIETTA MEMORIAL HOSPITAL	WASHINGTON	*	97011
360029	WOOD COUNTY HOSPITAL	WOOD	*	0

An asterisk in the PRA? column denotes that the maximum PRA paid by the hospital is less than benchmark PRA for the region.

### Additional Resources:

- **Rural GME HCRIS Data Tool:** Tool used to determine whether a hospital potentially qualifies for a PRA reset.
- **CMS Provider Number Lookup:** Tool used to determine your hospital provider number. You can also find your provider number using the Rural GME HCRIS Data Tool in the state list.
- **Impact of CMS Rule Changes on Rural GME: A Deeper Dive into Section 131:** RRPD-TAC webinar on Section 131.
- **CMS Guidance on Section 131:** FAQ published by CMS on hospitals eligible to reset PRA/Cap.
- **How to contact a Medicare Administrative Contractor (MAC):** CMS website with MAC contact information.
- **The FY22 IPPS Final Rule,** beginning page 73416, contains the formal regulations.

#### Acknowledgement

Disclaimer: The grant program is supported by the Health Resources and Services Administration of the U.S. Department of Health and Human Services under cooperative agreement #UK6RH32513. The content does not necessarily represent the official views of, nor an endorsement, by HRSA, HHS, or the U.S. Government.