

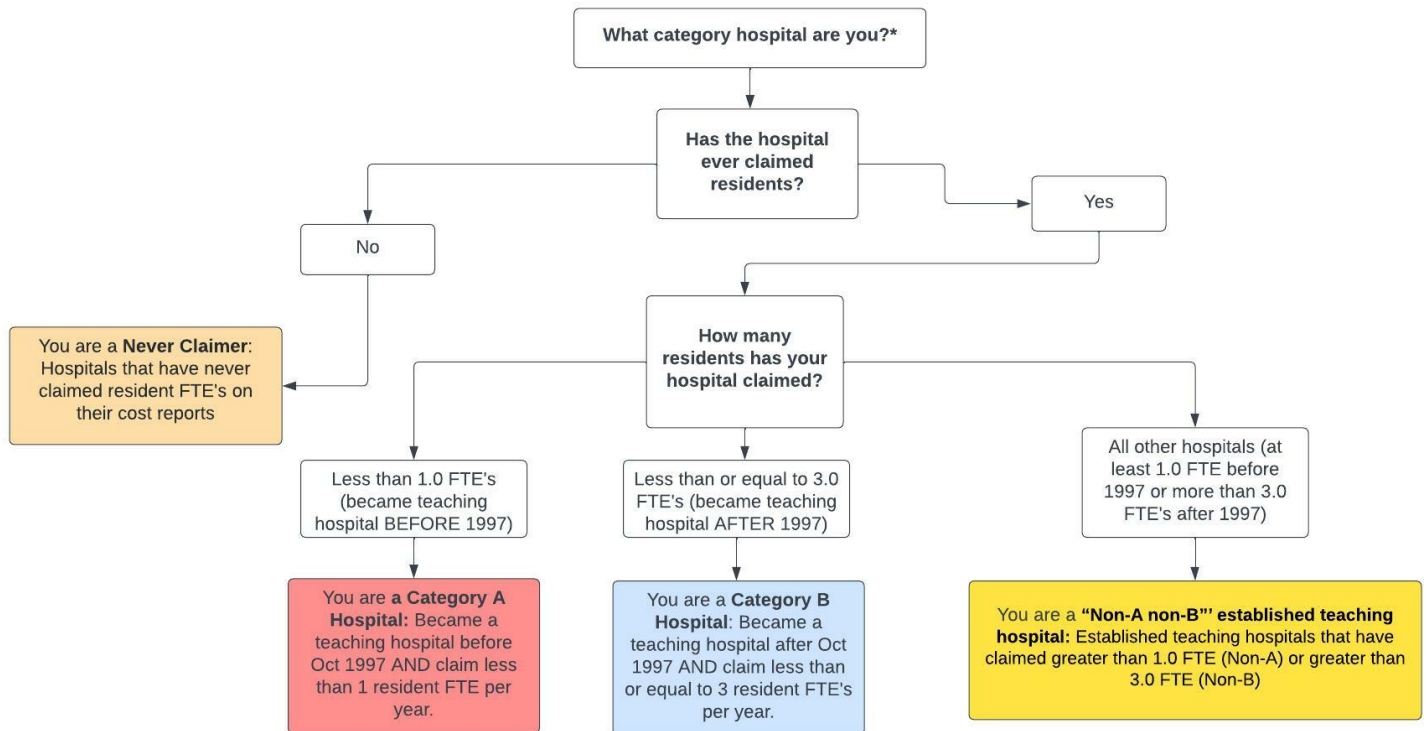
## Section 131 GME Tables for Missouri

This report classifies each hospital in the state into four groups based on data provided by the Centers for Medicare & Medicaid Services to aid in determining a hospital's eligibility to revise certain GME parameters under Section 131 of the CAA. For more details, visit the CMS website here. Classifications were prepared by staff of the Rural Residency Planning and Development (RRPD) and Teaching Health Center Planning and Development (THCPD) Technical Assistance Centers using data provided by CMS; hospitals are encouraged to confirm all data presented. The tables below are presented as a screening, are not definitive, and may differ from the classifications determined by CMS, the MAC, or other regulatory bodies. Further information, including data, presentations, and tools are available at RuralGME.org

### Overview

Hospitals — **with the exception of Critical Access Hospitals** – are classified into four categories based on their historical GME funding and expense. **Category A** and **Category B** Hospitals first claimed a few residents. Generally speaking, a Category A hospital first claimed fewer than 1.0 residents prior to October 1, 1997; a Category B hospital first claimed no more than 3.0 residents on or after October 1, 1997. **Never Claimer** hospitals have not claimed GME on a cost report since 1996. **All other hospitals** meet none of the three categories – we call these “Non-A Non-B Hospitals.” Note that **Critical Access Hospitals** are paid for GME by an entirely different mechanism and are omitted from all lists below; information about this is available at RuralGME.org. The following figure presents an oversimplified, high-level overview.

### Overview of Categorization Process



**\*Disclaimer:** This is an oversimplified model of four categories of hospitals based on GME history. Review detailed GME table and HCRIS file to confirm your hospital's category.

We recommend State Offices of Rural Health encourage **Category A and Category B** hospitals to carefully review their categorization using the Rural GME HCRIS Data Tool, **Never Claimers** to verify that they indeed have not claimed GME, and **Non-A and Non-B Hospitals** to confirm that they do not meet the qualifications for Category A or Category B.

Further details for each category are provided below. Note that hospital names are truncated to 40 characters. An asterisk in the “PRA?” column denotes that the maximum PRA paid by the hospital is less than benchmark PRA for the region. Each table is sorted by the county of the hospital; for hospitals that could not be assigned to a county, the city of the mailing address is provided.

**For All Hospital Types:** If you check the HCRIS data and believe it is inaccurate then you must electronically submit complete and unambiguous documentation to your MAC **no later than July 1, 2022** contesting the HCRIS data.

## 1 Category A Hospitals

**Category A:** Hospitals that became teaching hospitals (set PRA and cap) before October 1997 where that PRA and cap (either or both of DGME and IME) were set based on an FTE of less than 1.0.

- Category A hospitals may be eligible to *reset their PRA* when they train 1.0 or more FTEs from either existing or new programs in the earliest cost reporting period beginning on or after December 27, 2020 and before December 27, 2025.
- Category A Hospitals may be eligible to *reset their resident cap* if they start a new residency program training at least 1.0 FTEs between December 27, 2020 and before December 27, 2025.

*Next Step:* Category A Hospitals should confirm the accuracy of their PRA/CAP and then may contact their MAC to request a PRA reset and/or resident cap reset before December 27, 2025.

Table 1: Category A

CCN	Name	County	PRA?	Max PRA
260002	SOUTH POINT HOSPITAL	City: SAINT LOUIS	*	101568
260085	ST JOSEPH MEDICAL CENTER	JACKSON	*	71971
260095	CENTERPOINT MEDICAL CENTER	JACKSON	*	92390
260017	PHELPS COUNTY REGIONAL MEDICAL CENTER	PHELPS	*	21388

An asterisk in the PRA? column denotes that the maximum PRA paid by the hospital is less than benchmark PRA for the region.

## 2 Category B Hospitals

**Category B:** Hospitals that became teaching hospitals (set PRA and cap) after October 1997 through January 2021 where that PRA and cap (either or both of DGME and IME) were set based on an FTE of less than 3.0.

- Category B hospitals may be eligible to *reset their PRA* when they train 3.0 or more FTEs from either existing or new programs in the earliest cost reporting period beginning on or after December 27, 2020 and before December 27, 2025.
- Category B Hospitals may be eligible to *reset their resident cap* if they start a new residency program training at least 3.0 FTEs between December 27, 2020 and before December 27, 2025.

*Next Step:* Category B Hospitals should confirm the accuracy of their PRA/CAP and then may contact their MAC to request a PRA reset and/or resident cap reset before December 27, 2025.

Table 2: Category B

CCN	Name	County	PRA?	Max PRA
260198	SSM ST JOSEPH HEALTH CENTER - WENTZVILLE	City: WENTZVILLE	*	54880
264020	ROYAL OAKS HOSPITAL	City: WINDSOR		177779
264004	CENTER FOR BEHAVIORAL MEDICINE	CALLAWAY	*	78448
260209	FULTON MEDICAL CENTER LLC	CALLAWAY	*	103438
260214	BELTON REGIONAL MEDICAL CENTER	CASS	*	93304
260211	SAINT LUKES CANCER INSTITUTE	JACKSON	*	93375
260190	LEE'S SUMMIT MEDICAL CENTER	JACKSON	*	95000
260193	ST MARYS MEDICAL CENTER	JACKSON	*	91351
260074	MOBERLY REGIONAL MEDICAL CENTER	RANDOLPH	*	112251
260219	PROGRESS WEST HOSPITAL	ST CHARLES	*	0
260191	BARNES-JEWISH ST PETERS HOSPITAL	ST. CHARLES	*	108337
260210	ST ALEXIUS HOSPITAL	ST. LOUIS		126913

An asterisk in the PRA? column denotes that the maximum PRA paid by the hospital is less than benchmark PRA for the region.

### 3 Never Claimer Hospitals

**Never Claimers:** Hospitals that have never claimed residents for GME payment on any cost report. This includes hospitals that have had documented resident rotators in the past that were not claimed to establish a Per Resident Amount (PRA), and also hospitals that have never trained residents. For those hospitals that *have* trained residents in the past and never reported them, there is a risk of inadvertently setting a new PRA of zero and of establishing a cap in the future if 1.0 or more FTE of residents are being trained in a fiscal cost report year after 12/27/2020. In some circumstances the data may be incorrect and should be contested by contacting the MAC.

- Check to confirm that you do not have a claimed PRA/cap for all years.
- If you are not training greater than 1.0 FTEs right now, you do not need to contact your MAC until you begin training 1.0 or more FTEs.

*Next Step:* Any hospital that is in this category of “Never Claimer” that has trained 1.0 or more FTE in any fiscal cost report year following 12/27/20 MUST begin claiming those resident FTE as of that cost report year. The documentation maintained by the hospital regarding the costs it incurred in training those FTE will establish the PRA for that hospital, and may or may not start the cap-setting period. Note that such a hospital that reports no costs is at high risk of establishing a PRA of ZERO, that will remain established into the future.

Table 3: Never Claimers

CCN	Name	County
260081	SSM ST CLARE HEALTH CENTER	City: FENTON
264018	CRITTENTON CHILDREN'S CENTER	City: KANSAS CITY
263304	SHRINERS HOSPITALS FOR CHILDREN	City: SAINT LOUIS
261993	PEACE HAVEN ASSOCIATION	City: SAINT LOUIS
264010	ST LOUIS FORENSIC TREATMENT CENTER	City: SAINT LOUIS
260065	MERCY HOSPITAL SPRINGFIELD	City: SPRINGFIELD
264033	PERIMETER BEHAVIORAL HOSPITAL OF SPRINGF	City: SPRINGFIELD
260064	NOBLE HEALTH AUDRAIN COMMUNITY HOSPITAL	AUDRAIN
260034	BATES COUNTY MEMORIAL HOSPITAL	BATES
264032	CENTERPOINTE HOSPITAL OF COLUMBIA	BOONE

*Continued on next page*

Table 3 – Continued from previous page

CCN	Name	County
263033	LANDMARK REHABILITATION HOSPITAL OF COLU	BOONE
262020	LANDMARK HOSPITAL OF COLUMBIA, LLC	BOONE
260068	BOONE HOSPITAL CENTER	BOONE
264007	NORTHWEST MISSOURI PSYCHIATRIC REHAB CTR	BUCHANAN
262019	MOSIAC LIFE CARE AT ST JOSEPH	BUCHANAN
260006	MOSAIC LIFE CARE AT ST JOSEPH	BUCHANAN
260227	BLACK RIVER COMMUNITY MEDICAL CENTER	BUTLER
260119	POPLAR BLUFF REGIONAL MEDICAL CENTER	BUTLER
264031	OSAGE BEACH CENTER FOR COGNITIVE DISORDE	CAMDEN
260186	LAKE REGIONAL HEALTH SYSTEM	CAMDEN
260183	SAINT FRANCIS MEDICAL CENTER	CAPE GIRARDEAU
260110	SOUTHEASTHEALTH	CAPE GIRARDEAU
262015	LANDMARK HOSPITAL OF CAPE GIRARDEAU, LLC	CAPE GIRARDEAU
264027	SOUTHWEST MISSOURI PSYCHIATRIC REHABILIT	CEDAR
260096	NORTH KANSAS CITY HOSPITAL	CLAY
262018	KINDRED HOSPITAL NORTHLAND	CLAY
264030	SIGNATURE PSYCHIATRIC HOSPITAL	CLAY
260177	NEW LIBERTY HOSPITAL DISTRICT	CLAY
260057	CAMERON REGIONAL MEDICAL CENTER	CLINTON
260011	SSM HEALTH ST MARY'S HOSPITAL JEFFERSON	COLE
260004	COOPER COUNTY COMMUNITY HOSPITAL	COOPER
260015	TWIN RIVERS REGIONAL MEDICAL CENTER	DUNKLIN
260115	MISSOURI BAPTIST HOSPITAL SULLIVAN	FRANKLIN
260207	OZARKS COMMUNITY HOSPITAL	GREENE
262017	SELECT SPECIALTY HOSPITAL SPRINGFIELD, I	GREENE
263032	MERCY REHABILITATION HOSPITAL SPRINGFIEL	GREENE
264024	LAKELAND BEHAVIORAL HEALTH SYSTEM	GREENE
260175	GOLDEN VALLEY MEMORIAL HOSPITAL	HENRY
260078	OZARKS HEALTHCARE	HOWELL
264016	RESEARCH PSYCHIATRIC CTR	JACKSON
262011	KINDRED HOSPITAL - KANSAS CITY	JACKSON
260216	SAINT LUKE'S EAST HOSPITAL	JACKSON
262014	SELECT SPECIALTY HOSPITAL - WESTERN MISS	JACKSON
264017	TWO RIVERS BEHAVIORAL HEALTH SYSTEM	JACKSON
260001	MERCY HOSPITAL JOPLIN	JASPER
262016	LANDMARK HOSPITAL OF JOPLIN, LLC	JASPER
260228	MERCY MCCUNE BROOKS HOSPITAL	JASPER
260023	MERCY HOSPITAL JEFFERSON	JEFFERSON
260097	WESTERN MISSOURI MEDICAL CENTER	JOHNSON
260059	MERCY HOSPITAL LEBANON	LACLEDE
262001	MISSOURI REHABILITATION CTR	LAWRENCE
260025	HANNIBAL REGIONAL HOSPITAL	MARION
260050	SSM HEALTH ST. FRANCIS HOSPITAL- MARYVIL	NODAWAY
260070	PEMISCOT COUNTY MEMORIAL HOSPITAL	PEMISCOT
260009	BOTHWELL REGIONAL HEALTH CENTER	PETTIS
260062	SAINT LUKES NORTH HOSPITAL	PLATTE
260195	CITIZENS MEMORIAL HOSPITAL	POLK
260229	SOUTHEAST HEALTH CENTER OF REYNOLDS COUN	REYNOLDS
260080	SOUTHEAST HEALTH CENTER OF RIPLEY COUNTY	RIPLEY
262013	SELECT SPECIALTY HOSPITAL-ST LOUIS	SAINT CHARLES
260142	FITZGIBBON HOSPITAL	SALINE
260113	MISSOURI DELTA MEDICAL CENTER	SCOTT
260147	SAC-OSAGE HOSPITAL	ST CLAIR
260163	PARKLAND HEALTH CENTER	ST FRANCOIS

Continued on next page

Table 3 – Continued from previous page

CCN	Name	County
263031	SSM HEALTH REHABILITATION HOSPITAL	ST LOUIS
260200	SSM ST JOSEPH HOSPITAL WEST	ST. CHARLES
264012	CENTERPOINTE HOSPITAL	ST. CHARLES
260005	SSM ST JOSEPH HEALTH CENTER	ST. CHARLES
264005	SOUTHEAST MISSOURI MENTAL HLTH CTR	ST. FRANCOIS
262012	MERCY CONTINUING CARE HOSPITAL	ST. LOUIS
263303	RANKEN JORDAN PEDIATRIC BRIDGE HOSPITAL	ST. LOUIS
264028	HAWTHORN CHILDREN’S PSYCHIATRIC HOSPITAL	ST. LOUIS
263030	ST LUKE’S REHABILITATION HOSPITAL	ST. LOUIS
264029	ST LOUIS REGIONAL PSYCHIATRIC STABILIZAT	ST. LOUIS
263029	MERCY REHABILITATION HOSPITAL ST LOUIS	ST. LOUIS
260077	MERCY HOSPITAL SOUTH	ST. LOUIS
262010	KINDRED HOSPITAL - ST LOUIS	ST. LOUIS CITY
262021	KINDRED HOSPITAL-ST LOUIS AT MERCY	ST. LOUIS CITY
260230	KINDRED HOSPITAL-ST LOUIS AT MERCY	ST. LOUIS CTY
260160	SOUTHEASTHEALTH CENTER OF STODDARD COUNT	STODDARD
260094	COX MEDICAL CENTER BRANSON	TANEY
260024	TEXAS COUNTY MEMORIAL HOSPITAL	TEXAS
260061	NEVADA REGIONAL MEDICAL CENTER	VERNON

## 4 All Other Hospitals

**“Non-A Non-B” established teaching hospitals:** Hospitals that don’t appear to qualify for a PRA/cap reset because they have claimed FTE greater than the eligibility criteria for category A (at least 1.0 FTE) or category B (more than 3.0 FTE).

*Next Step:* “Non-A Non-B” should confirm that they are not in fact eligible for a PRA/cap reset.

Table 4: Neither Category A nor Category B

CCN	Name	County	PRA?	Max PRA
264011	MID-MISSOURI MENTAL HEALTH CENTER	City: COLUMBIA	*	70974
260178	WOMEN’S AND CHILDREN’S HOSPITAL	City: COLUMBIA	*	94194
260159	CHRISTIAN HOSPITAL NORTHWEST	City: FLORISSANT	*	62186
260131	CALLAWAY MEMORIAL HOSPITAL	City: FULTON	*	72330
260166	MEDICAL CENTER OF INDEPENDENCE	City: INDEPENDENCE	*	73552
260027	RESEARCH MEDICAL CENTER	City: KANSAS CITY		138512
260031	TRINITY LUTHERAN HOSPITAL	City: KANSAS CITY	*	110910
260107	BAPTIST LUTHERAN MEDICAL CENTER	City: KANSAS CITY	*	117798
260188	PARK LANE MEDICAL CENTER	City: KANSAS CITY	*	39145
263300	SSM CARDINAL GLENNON CHILDREN’S HOSPIT	City: SAINT LOUIS	*	66237
260021	FOREST PARK HOSPITAL	City: SAINT LOUIS	*	107453
260008	ST LOUIS CONNECTCARE	City: SAINT LOUIS	*	66122
260105	SSM HEALTH SAINT LOUIS UNIVERSITY HOSPIT	City: SAINT LOUIS		152943
260042	BETHESDA GENERAL HOSPITAL	City: SAINT LOUIS	*	46254
260022	NORTHEAST REGIONAL MEDICAL CENTER	ADAIR	*	118266
263027	RUSK REHABILITATION CTR	BOONE	*	93377
260141	UNIVERSITY OF MISSOURI HEALTH CARE	BOONE		122395
260047	CAPITAL REGION MEDICAL CENTER	COLE	*	86730
260052	MERCY HOSPITAL WASHINGTON	FRANKLIN	*	0

Continued on next page

Table 4 – Continued from previous page

CCN	Name	County	Review PRA?	Max PRA
260040	COX MEDICAL CENTERS	GREENE	*	85133
263302	THE CHILDREN'S MERCY HOSPITAL	JACKSON	*	103156
264008	CENTER FOR BEHAVIORAL MEDICINE	JACKSON	*	93798
260048	TRUMAN MEDICAL CENTER HOSPITAL HILL	JACKSON	*	93248
260102	UNIVERSITY HEALTH LAKEWOOD MEDICAL CENTE	JACKSON		155310
260138	ST LUKES HOSPITAL OF KANSAS CITY	JACKSON	*	94764
260137	FREEMAN HEALTH SYSTEM - FREEMAN WEST	NEWTON	*	86136
260116	PARKLAND HEALTH CENTER - WEBER ROAD	ST FRANCIOS	*	78921
260104	SSM HEALTH DEPAUL HOSPITAL ST LOUIS	ST. LOUIS		122883
260176	ST LUKE'S DES PERES HOSPITAL	ST. LOUIS	*	93389
263301	ST LOUIS CHILDRENS HOSPITAL	ST. LOUIS	*	92995
260108	MISSOURI BAPTIST MEDICAL CENTER	ST. LOUIS	*	92995
260180	CHRISTIAN HOSPITAL NORTHEAST	ST. LOUIS	*	92995
260091	SSM HEALTH ST MARY'S HOSPITAL - ST LOUIS	ST. LOUIS	*	110729
260020	MERCY HOSPITAL ST LOUIS	ST. LOUIS		156367
263028	THE REHABILITATION INSTITUTE OF ST. LOUI	ST. LOUIS	*	0
260179	ST LUKES HOSPITAL	ST. LOUIS		121119
260162	BARNES-JEWISH WEST COUNTY HOSPITAL	ST. LOUIS	*	115435
260032	BARNES JEWISH HOSPITAL	ST. LOUIS CITY		136868
264025	METROPOLITAN ST LOUIS PSYCHIATRIC CTR	ST. LOUIS CITY	*	80118

An asterisk in the PRA? column denotes that the maximum PRA paid by the hospital is less than benchmark PRA for the region.

### Additional Resources:

- **Rural GME HCRIS Data Tool:** Tool used to determine whether a hospital potentially qualifies for a PRA reset.
- **CMS Provider Number Lookup:** Tool used to determine your hospital provider number. You can also find your provider number using the Rural GME HCRIS Data Tool in the state list.
- **Impact of CMS Rule Changes on Rural GME: A Deeper Dive into Section 131:** RRPD-TAC webinar on Section 131.
- **CMS Guidance on Section 131:** FAQ published by CMS on hospitals eligible to reset PRA/Cap.
- **How to contact a Medicare Administrative Contractor (MAC):** CMS website with MAC contact information.
- **The FY22 IPPS Final Rule,** beginning page 73416, contains the formal regulations.

#### Acknowledgement

Disclaimer: The grant program is supported by the Health Resources and Services Administration of the U.S. Department of Health and Human Services under cooperative agreement #UK6RH32513. The content does not necessarily represent the official views of, nor an endorsement, by HRSA, HHS, or the U.S. Government.