

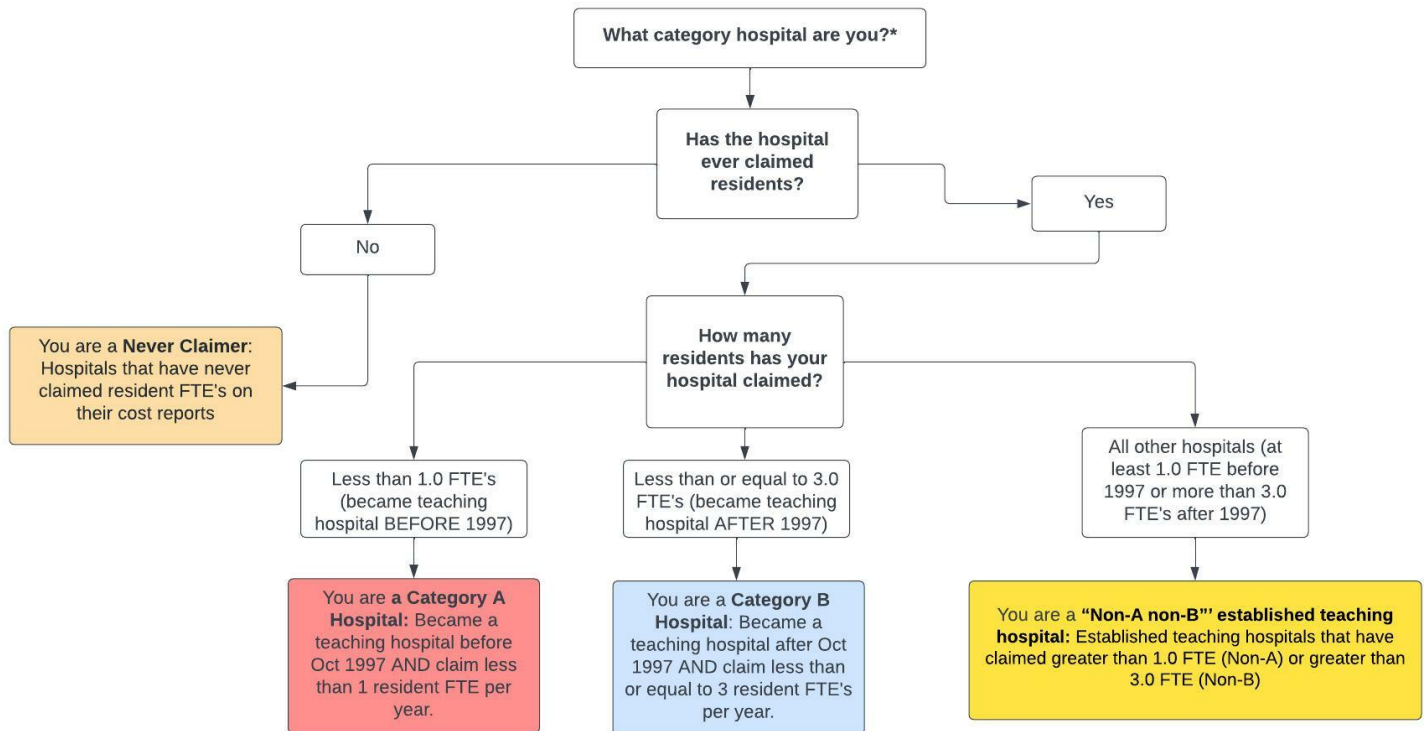
Section 131 GME Tables for Michigan

This report classifies each hospital in the state into four groups based on data provided by the Centers for Medicare & Medicaid Services to aid in determining a hospital's eligibility to revise certain GME parameters under Section 131 of the CAA. For more details, visit the CMS website here. Classifications were prepared by staff of the Rural Residency Planning and Development (RRPD) and Teaching Health Center Planning and Development (THCPD) Technical Assistance Centers using data provided by CMS; hospitals are encouraged to confirm all data presented. The tables below are presented as a screening, are not definitive, and may differ from the classifications determined by CMS, the MAC, or other regulatory bodies. Further information, including data, presentations, and tools are available at RuralGME.org

Overview

Hospitals — **with the exception of Critical Access Hospitals** – are classified into four categories based on their historical GME funding and expense. **Category A** and **Category B** Hospitals first claimed a few residents. Generally speaking, a Category A hospital first claimed fewer than 1.0 residents prior to October 1, 1997; a Category B hospital first claimed no more than 3.0 residents on or after October 1, 1997. **Never Claimer** hospitals have not claimed GME on a cost report since 1996. **All other hospitals** meet none of the three categories – we call these “Non-A Non-B Hospitals.” Note that **Critical Access Hospitals** are paid for GME by an entirely different mechanism and are omitted from all lists below; information about this is available at RuralGME.org. The following figure presents an oversimplified, high-level overview.

Overview of Categorization Process



***Disclaimer:** This is an oversimplified model of four categories of hospitals based on GME history. Review detailed GME table and HCRIS file to confirm your hospital's category.

We recommend State Offices of Rural Health encourage **Category A and Category B** hospitals to carefully review their categorization using the Rural GME HCRIS Data Tool, **Never Claimers** to verify that they indeed have not claimed GME, and **Non-A and Non-B Hospitals** to confirm that they do not meet the qualifications for Category A or Category B.

Further details for each category are provided below. Note that hospital names are truncated to 40 characters. An asterisk in the “PRA?” column denotes that the maximum PRA paid by the hospital is less than benchmark PRA for the region. Each table is sorted by the county of the hospital; for hospitals that could not be assigned to a county, the city of the mailing address is provided.

For All Hospital Types: If you check the HCRIS data and believe it is inaccurate then you must electronically submit complete and unambiguous documentation to your MAC **no later than July 1, 2022** contesting the HCRIS data.

1 Category A Hospitals

Category A: Hospitals that became teaching hospitals (set PRA and cap) before October 1997 where that PRA and cap (either or both of DGME and IME) were set based on an FTE of less than 1.0.

- Category A hospitals may be eligible to *reset their PRA* when they train 1.0 or more FTEs from either existing or new programs in the earliest cost reporting period beginning on or after December 27, 2020 and before December 27, 2025.
- Category A Hospitals may be eligible to *reset their resident cap* if they start a new residency program training at least 1.0 FTEs between December 27, 2020 and before December 27, 2025.

Next Step: Category A Hospitals should confirm the accuracy of their PRA/CAP and then may contact their MAC to request a PRA reset and/or resident cap reset before December 27, 2025.

There are no Likely Category A Hospitals in Michigan

2 Category B Hospitals

Category B: Hospitals that became teaching hospitals (set PRA and cap) after October 1997 through January 2021 where that PRA and cap (either or both of DGME and IME) were set based on an FTE of less than 3.0.

- Category B hospitals may be eligible to *reset their PRA* when they train 3.0 or more FTEs from either existing or new programs in the earliest cost reporting period beginning on or after December 27, 2020 and before December 27, 2025.
- Category B Hospitals may be eligible to *reset their resident cap* if they start a new residency program training at least 3.0 FTEs between December 27, 2020 and before December 27, 2025.

Next Step: Category B Hospitals should confirm the accuracy of their PRA/CAP and then may contact their MAC to request a PRA reset and/or resident cap reset before December 27, 2025.

Table 2: Category B

CCN	Name	County	PRA?	Max PRA
230186	MADISON COMMUNITY HOSPITAL	City: MADISON HEIGHTS	*	60599
230085	BRONSON SOUTH HAVEN HOSPITAL	City: SOUTH HAVEN	*	73839
234035	WALTER P REUTHER PSYCHIATRIC HOSPITAL	City: WESTLAND	*	0
230021	LAKELAND HOSPITAL, ST JOSEPH	BERRIEN	*	109053
230075	BRONSON BATTLE CREEK HOSPITAL	CALHOUN	*	112344
230037	HILLSDALE HOSPITAL	HILLSDALE	*	111335
234026	KALAMAZOO REGIONAL PSYCHIATRIC HOSPITAL	KALAMAZOO	*	0
233026	MARY FREE BED REHABILITATION HOSPITAL	KENT	*	93000
230069	SAINT JOSEPH MERCY LIVINGSTON HOSPITAL	LIVINGSTON	*	103186
230241	ASCENSION RIVER DISTRICT HOSPITAL	ST CLAIR		160577
234025	CARO CENTER	TUSCOLA	*	0
230146	HENRY FORD WYANDOTTE HOSPITAL	WAYNE		124156

An asterisk in the PRA? column denotes that the maximum PRA paid by the hospital is less than benchmark PRA for the region.

3 Never Claimer Hospitals

Never Claimers: Hospitals that have never claimed residents for GME payment on any cost report. This includes hospitals that have had documented resident rotators in the past that were not claimed to establish a Per Resident Amount (PRA), and also hospitals that have never trained residents. For those hospitals that *have* trained residents in the past and never reported them, there is a risk of inadvertently setting a new PRA of zero and of establishing a cap in the future if 1.0 or more FTE of residents are being trained in a fiscal cost report year after 12/27/2020. In some circumstances the data may be incorrect and should be contested by contacting the MAC.

- Check to confirm that you do not have a claimed PRA/cap for all years.
- If you are not training greater than 1.0 FTEs right now, you do not need to contact your MAC until you begin training 1.0 or more FTEs.

Next Step: Any hospital that is in this category of “Never Claimer” that has trained 1.0 or more FTE in any fiscal cost report year following 12/27/20 MUST begin claiming those resident FTE as of that cost report year. The documentation maintained by the hospital regarding the costs it incurred in training those FTE will establish the PRA for that hospital, and may or may not start the cap-setting period. Note that such a hospital that reports no costs is at high risk of establishing a PRA of ZERO, that will remain established into the future.

Table 3: Never Claimers

CCN	Name	County
230193	MCLAREN LAPEER REGION	City: LAPEER
230100	TAWAS ST JOSEPH HOSPITAL	City: TAWAS CITY
234042	THE BEHAVIORAL CENTER OF MICHIGAN	City: WARREN
230095	MIDMICHIGAN MEDICAL CENTER - WEST BRANCH	City: WEST BRANCH
232034	ASCENSION BORGESS PIPP HOSPITAL	ALLEGAN
230036	MIDMICHIGAN MEDICAL CENTER - ALPENA	ALPENA
230040	SPECTRUM HEALTH PENNOCK	BARRY
232020	MCLAREN BAY SPECIAL CARE	BAY
230078	LAKELAND HOSPITAL WATERVLIT	BERRIEN
232025	LAKELAND SPECIALTY HOSPITAL AT BERRIEN C	BERRIEN
230217	OAKLAWN HOSPITAL	CALHOUN

Continued on next page

Table 3 – Continued from previous page

CCN	Name	County
232035	SELECT SPECIALTY HOSPITAL- BATTLE CREEK	CALHOUN
233025	SOUTHWEST REGIONAL REHABILITATION CENTER	CALHOUN
230239	CHIPPEWA COUNTY WAR MEMORIAL HOSPITAL	CHIPPEWA
230180	MIDMICHIGAN MEDICAL CENTER-CLARE	CLARE COUNTY
234043	CEDAR CREEK HOSPITAL	CLINTON
230058	MUNSON HEALTHCARE GRAYLING HOSPITAL	CRAWFORD
230101	ST FRANCIS HOSPITAL	DELTA
230055	DICKINSON COUNTY MEMORIAL HOSPITAL	DICKINSON
230105	MCLAREN NORTHERN MICHIGAN	EMMET
232012	SELECT SPECIALTY HOSPITAL-FLINT	GENESEE
234044	BRIGHTWELL BEHAVIORAL HEALTH	HENRY
230108	UP HEALTH SYSTEM PORTAGE	HOUGHTON
230118	MCLAREN THUMB REGION	HURON
232037	SPARROW SPECIALTY HOSPITAL	INGHAM
230080	MCLAREN CENTRAL MICHIGAN	ISABELLA
232036	HENRY FORD ALLEGIANCE SPECIALTY HOSPITAL	JACKSON
232026	SELECT SPECIALTY HOSPITAL - GRAND RAPIDS	KENT
234030	FOREST VIEW PSYCHIATRIC HOSPITAL	KENT
232029	SELECT SPECIALTY HOSPITAL - SPECTRUM HEA	KENT
230005	PROMEDICA CHARLES AND VIRGINIA HICKMAN H	LENAWEE
230279	ASCENSION BRIGHTON CENTER FOR RECOVERY	LIVINGSTON
234039	THE BEHAVIORAL CENTER OF MICHIGAN	MACOMB
232023	SELECT SPECIALTY HOSPITAL-MACOMB COUNTY	MACOMB
234021	HARBOR OAKS HOSPITAL	MACOMB
230303	MUNSON HEALTHCARE MANISTEE HOSPITAL	MANISTEE
230110	SPECTRUM HEALTH LUDINGTON HOSPITAL	MASON
230093	SPECTRUM HEALTH BIG RAPIDS HOSPITAL	MECOSTA
232021	SELECT SPECIALTY HOSPITAL - MUSKEGON	MUSKEGON
230106	SPECTRUM HEALTH GERBER MEMORIAL	NEWAYGO
232039	PIONEER SPECIALTY HOSPITAL	OAKLAND
230071	STRAITH HOSPITAL FOR SPECIAL SURGERY	OAKLAND
232030	SELECT SPECIALTY HOSPITAL-PONTIAC	OAKLAND
230304	PIONEER SPECIALTY HOSPITAL	OAKLAND
234023	HAVENWYCK HOSPITAL	OAKLAND
230133	MUNSON HEALTHCARE OTSEGO MEMORIAL HOSPIT	OTSEGO
230174	NORTH OTTAWA COMMUNITY HEALTH SYSTEM	OTTAWA
230003	SPECTRUM HEALTH ZEELAND COMMUNITY HOSPIT	OTTAWA
230072	HOLLAND COMMUNITY HOSPITAL	OTTAWA
233029	ROGERS CITY REHABILITATION HOSPITAL	PRESQUE ISLE
232033	SELECT SPECIALTY HOSPITAL-SAGINAW	SAGINAW
230121	MEMORIAL HEALTHCARE	SHIAWASSEE
230031	LAKE HURON MEDICAL CENTER	ST. CLAIR
230216	MCLAREN PORT HURON	ST. CLAIR
230015	THREE RIVERS HEALTH	ST. JOSEPH
230096	STURGIS HOSPITAL	ST. JOSEPH
230212	SAINT JOSEPH MERCY SALINE HOSPITAL	WASHTENAW
230259	ST JOSEPH MERCY CHELSEA	WASHTENAW
232024	SELECT SPECIALTY HOSPITAL-ANN ARBOR	WASHTENAW
232038	SELECT SPECIALTY HOSPITAL-GROSSE POINTE	WAYNE
232019	VIBRA HOSPITAL OF SOUTHEASTERN MI-TAYLOR	WAYNE
232032	SELECT SPECIALTY HOSPITAL-NORTHWEST DETR	WAYNE
234038	BCA STONECREST CENTER	WAYNE
232027	KINDRED HOSPITAL DETROIT	WAYNE
232031	SELECT SPECIALTY HOSPITAL-WYANDOTTE, LLC	WAYNE

Continued on next page

Table 3 – Continued from previous page

CCN	Name	County
234040	SAMARITAN BEHAVIORAL CENTER	WAYNE
230081	MUNSON HEALTHCARE CADILLAC HOSPITAL	WEXFORD

4 All Other Hospitals

“Non-A Non-B” established teaching hospitals: Hospitals that don’t appear to qualify for a PRA/cap reset because they have claimed FTE greater than the eligibility criteria for category A (at least 1.0 FTE) or category B (more than 3.0 FTE).

Next Step: “Non-A Non-B” should confirm that they are not in fact eligible for a PRA/cap reset.

Table 4: Neither Category A nor Category B

CCN	Name	County	PRA?	Max PRA
230156	ST JOSEPH MERCY HOSPITAL	City: ANN ARBOR	*	108030
230022	PROMEDICA COLDWATER REGIONAL HOSPITAL	City: COLDWATER	*	100907
230065	ST JOHN NORTHEAST CAMPUS	City: DETROIT	*	85414
230147	MERCY HOSPITAL	City: DETROIT	*	69298
230076	HUTZEL HOSPITAL	City: DETROIT	*	81759
230128	GRACE HOSPITAL NORTHWESTERN UNIT	City: DETROIT	*	78792
230119	ST JOHN DETROIT RIVERVIEW HOSPITAL	City: DETROIT	*	84798
230151	BEAUMONT HOSPITAL - FARMINGTON HILLS	City: FARMINGTON HILLS	*	110053
230032	SPECTRUM HEALTH-EAST CAMPUS	City: GRAND RAPIDS	*	56899
230089	BEAUMONT HOSPITAL - GROSSE POINTE	City: GROSSE POINTE		181236
230135	HENRY FORD COTTAGE HOSPITAL	City: GROSSE POINTE FARMS		139388
230257	ST JOHN NORTH SHORES HOSPITAL	City: HARRISON TOWNSHIP	*	90765
230117	BORGESS MEDICAL CENTER	City: KALAMAZOO	*	104014
230157	ST LAWRENCE HOSPITAL	City: LANSING	*	79096
230223	ST JOHN MACOMB-OAKLAND HOSPITAL-OAKLAND	City: MADISON HEIGHTS	*	107857
230099	PROMEDICA MONROE REGIONAL HOSPITAL	City: MONROE	*	106855
230159	MUSKEGON GENERAL HOSPITAL	City: MUSKEGON	*	77806
230122	SAGINAW GENERAL HOSPITAL	City: SAGINAW	*	75714
230169	RIVERSIDE OSTEOPATHIC HOSPITAL	City: TRENTON	*	90706
230204	HENRY FORD MACOMB HOSPITAL-WARREN CAMPUS	City: WARREN	*	90823
230142	BEAUMONT HOSPITAL - WAYNE	City: WAYNE	*	107828
230041	MCLAREN BAY REGION	BAY	*	95989
230141	MCLAREN FLINT	GENESEE		152852
230132	HURLEY MEDICAL CENTER	GENESEE		160154
230197	ASCENSION GENESYS HOSPITAL	GENESEE	*	105953
230097	MUNSON MEDICAL CENTER	GRAND TRAVERSE		116098
230030	MIDMICHIGAN MEDICAL CENTER-GRATIOT	GRATIOT	*	105720
230167	MCLAREN GREATER LANSING	INGHAM	*	95519
230230	EDWARD W SPARROW HOSPITAL	INGHAM	*	113557
230092	HENRY FORD ALLEGIANCE HEALTH	JACKSON	*	109674
230017	BRONSON METHODIST HOSPITAL	KALAMAZOO	*	112076
234006	PINE REST CHRISTIAN MENTAL HEALTH SERVIC	KENT	*	99801
230059	MERCY HEALTH SAINT MARY’S	KENT	*	109810
230038	SPECTRUM HEALTH	KENT	*	97390
230236	METRO HEALTH HOSPITAL	KENT	*	96769
230195	ASCENSION MACOMB OAKLAND HOSP-WARREN CAM	MACOMB		121407

Continued on next page

Table 4 – Continued from previous page

CCN	Name	County	Review PRA?	Max PRA
230047	HENRY FORD MACOMB HOSPITAL	MACOMB		126384
230264	SOUTHEAST MICHIGAN SURGICAL HOSPITAL LLC	MACOMB	*	104567
230227	MCLAREN MACOMB	MACOMB COUNTY		115425
230054	UPHS MARQUETTE DLP HOSPITAL	MARQUETTE	*	106770
230222	MIDMICHIGAN MEDICAL CENTER-MIDLAND	MIDLAND		152126
230208	SPARROW CARSON HOSPITAL	MONTCALM	*	95833
230035	SPECTRUM HEALTH UNITED HOSPITAL	MONTCALM	*	95000
230066	MERCY HEALTH HACKLEY CAMPUS	MUSKEGON		118684
230004	MERCY HEALTH MUSKEGON	MUSKEGON	*	112879
230302	HENRY FORD WEST BLOOMFIELD HOSPITAL	OAKLAND	*	104914
234011	HENRY FORD KINGSWOOD HOSPITAL	OAKLAND	*	107146
230019	ASCENSION PROVIDENCE HOSPITAL, SOUTHFIEL	OAKLAND		117353
230269	BEAUMONT HOSPITAL, TROY	OAKLAND		142804
230029	ST JOSEPH MERCY OAKLAND	OAKLAND		155984
230207	MCLAREN OAKLAND	OAKLAND	*	107943
230254	ASCENSION PROVIDENCE ROCHESTER HOSPITAL	OAKLAND		147557
230013	PONTIAC GENERAL HOSPITAL	OAKLAND		176893
230301	SURGEONS CHOICE MEDICAL CENTER	OAKLAND	*	0
230277	HURON VALLEY-SINAI HOSPITAL	OAKLAND	*	106127
230130	BEAUMONT HOSPITAL ROYAL OAK	OAKLAND	*	106996
230275	HEALTHSOURCE SAGINAW	SAGINAW	*	105982
230077	ASCENSION ST MARY'S HOSPITAL	SAGINAW		121247
230070	COVENANT MEDICAL CENTER	SAGINAW		120245
234041	THE CENTER FOR FORENSIC PSYCHIATRY	WASHTENAW	*	0
230046	UNIVERSITY OF MICHIGAN HEALTH SYSTEM	WASHTENAW		115116
230144	FOREST HEALTH MEDICAL CENTER	WASHTENAW	*	57701
230002	ST JOE MERCY HOSPITAL SYSTEM LIVONIA	WAYNE		126113
230053	HENRY FORD HOSPITAL	WAYNE		148088
230297	KARMANOS CANCER CENTER	WAYNE		129862
230020	BEAUMONT HOSPITAL - DEARBORN	WAYNE		156050
233300	CHILDREN'S HOSPITAL OF MICHIGAN	WAYNE	*	106996
230024	SINAI-GRACE HOSPITAL	WAYNE		117880
230244	GARDEN CITY HOSPITAL	WAYNE	*	103539
230270	BEAUMONT HOSPITAL - TAYLOR	WAYNE		127531
230104	HARPER UNIVERSITY HOSPITAL	WAYNE		124406
230165	ASCENSION ST JOHN HOSPITAL	WAYNE		134566
230273	DETROIT RECEIVING HOSPITAL	WAYNE	*	106996
230176	BEAUMONT HOSPITAL - TRENTON	WAYNE		129003
233027	REHABILITATION INSTITUTE OF MICHIGAN	WAYNE COUNTY		167382

An asterisk in the PRA? column denotes that the maximum PRA paid by the hospital is less than benchmark PRA for the region.

Additional Resources:

- **Rural GME HCRIS Data Tool:** Tool used to determine whether a hospital potentially qualifies for a PRA reset.
- **CMS Provider Number Lookup:** Tool used to determine your hospital provider number. You can also find your provider number using the Rural GME HCRIS Data Tool in the state list.
- **Impact of CMS Rule Changes on Rural GME: A Deeper Dive into Section 131:** RRPD-TAC webinar on Section 131.
- **CMS Guidance on Section 131:** FAQ published by CMS on hospitals eligible to reset PRA/Cap.
- **How to contact a Medicare Administrative Contractor (MAC):** CMS website with MAC contact information.

- **The FY22 IPPS Final Rule**, beginning page 73416, contains the formal regulations.

Acknowledgement

Disclaimer: The grant program is supported by the Health Resources and Services Administration of the U.S. Department of Health and Human Services under cooperative agreement #UK6RH32513. The content does not necessarily represent the official views of, nor an endorsement, by HRSA, HHS, or the U.S. Government.