

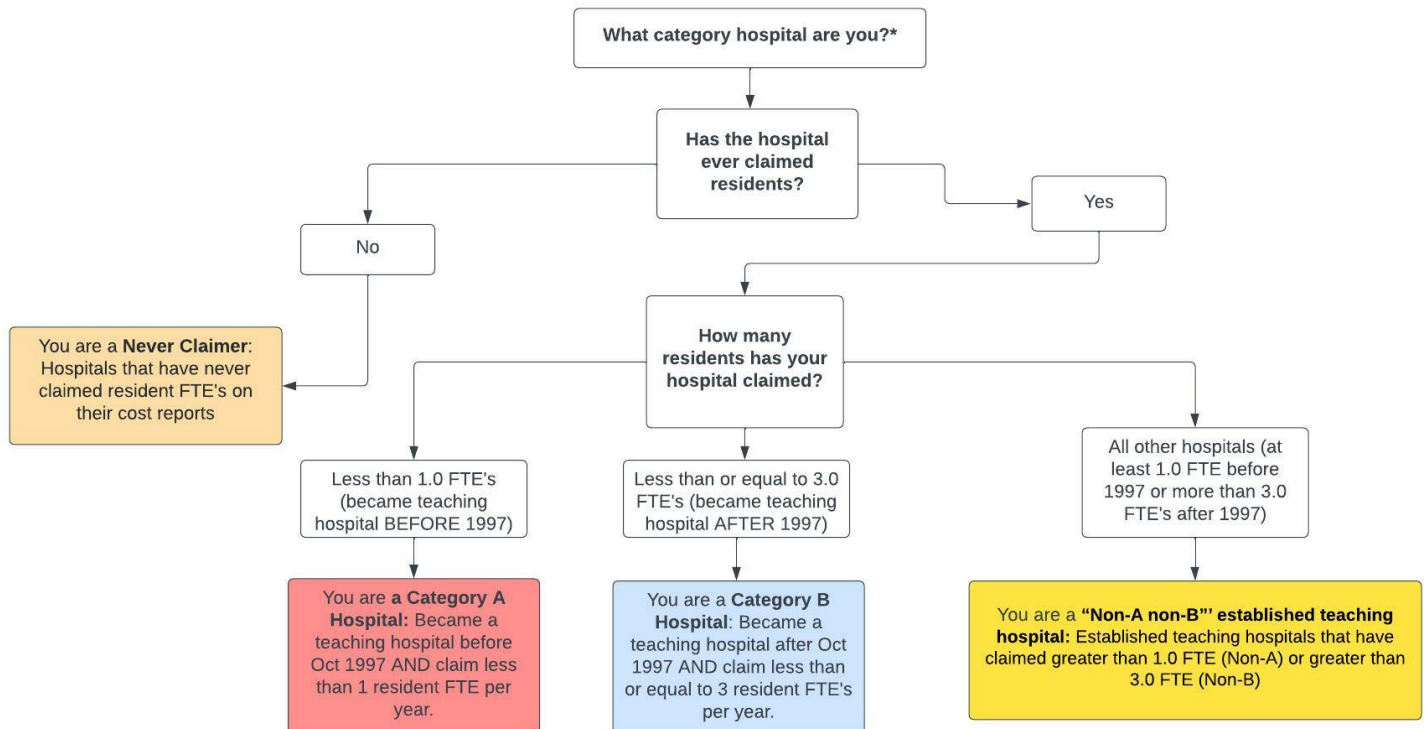
Section 131 GME Tables for Massachusetts

This report classifies each hospital in the state into four groups based on data provided by the Centers for Medicare & Medicaid Services to aid in determining a hospital's eligibility to revise certain GME parameters under Section 131 of the CAA. For more details, visit the CMS website here. Classifications were prepared by staff of the Rural Residency Planning and Development (RRPD) and Teaching Health Center Planning and Development (THCPD) Technical Assistance Centers using data provided by CMS; hospitals are encouraged to confirm all data presented. The tables below are presented as a screening, are not definitive, and may differ from the classifications determined by CMS, the MAC, or other regulatory bodies. Further information, including data, presentations, and tools are available at RuralGME.org

Overview

Hospitals — **with the exception of Critical Access Hospitals** – are classified into four categories based on their historical GME funding and expense. **Category A** and **Category B** Hospitals first claimed a few residents. Generally speaking, a Category A hospital first claimed fewer than 1.0 residents prior to October 1, 1997; a Category B hospital first claimed no more than 3.0 residents on or after October 1, 1997. **Never Claimer** hospitals have not claimed GME on a cost report since 1996. **All other hospitals** meet none of the three categories – we call these “Non-A Non-B Hospitals.” Note that **Critical Access Hospitals** are paid for GME by an entirely different mechanism and are omitted from all lists below; information about this is available at RuralGME.org. The following figure presents an oversimplified, high-level overview.

Overview of Categorization Process



***Disclaimer:** This is an oversimplified model of four categories of hospitals based on GME history. Review detailed GME table and HCRIS file to confirm your hospital's category.

We recommend State Offices of Rural Health encourage **Category A and Category B** hospitals to carefully review their categorization using the Rural GME HCRIS Data Tool, **Never Claimers** to verify that they indeed have not claimed GME, and **Non-A and Non-B Hospitals** to confirm that they do not meet the qualifications for Category A or Category B.

Further details for each category are provided below. Note that hospital names are truncated to 40 characters. An asterisk in the “PRA?” column denotes that the maximum PRA paid by the hospital is less than benchmark PRA for the region. Each table is sorted by the county of the hospital; for hospitals that could not be assigned to a county, the city of the mailing address is provided.

For All Hospital Types: If you check the HCRIS data and believe it is inaccurate then you must electronically submit complete and unambiguous documentation to your MAC **no later than July 1, 2022** contesting the HCRIS data.

1 Category A Hospitals

Category A: Hospitals that became teaching hospitals (set PRA and cap) before October 1997 where that PRA and cap (either or both of DGME and IME) were set based on an FTE of less than 1.0.

- Category A hospitals may be eligible to *reset their PRA* when they train 1.0 or more FTEs from either existing or new programs in the earliest cost reporting period beginning on or after December 27, 2020 and before December 27, 2025.
- Category A Hospitals may be eligible to *reset their resident cap* if they start a new residency program training at least 1.0 FTEs between December 27, 2020 and before December 27, 2025.

Next Step: Category A Hospitals should confirm the accuracy of their PRA/CAP and then may contact their MAC to request a PRA reset and/or resident cap reset before December 27, 2025.

Table 1: Category A

CCN	Name	County	PRA?	Max PRA
224022	BOURNEWOOD HOSPITAL	City: BOSTON COLLEGE	*	77552
223028	WHITTIER REHABILITATION HOSPITAL	City: HAVERHILL	*	84889
220083	BETH ISRAEL DEACONESS HOSPITAL - NEEDHAM	NORFOLK	*	95333
223029	FAIRLAWN REHAB HOSP, AN AFFILIATE OF ENC	WORCESTER	*	70863

An asterisk in the PRA? column denotes that the maximum PRA paid by the hospital is less than benchmark PRA for the region.

2 Category B Hospitals

Category B: Hospitals that became teaching hospitals (set PRA and cap) after October 1997 through January 2021 where that PRA and cap (either or both of DGME and IME) were set based on an FTE of less than 3.0.

- Category B hospitals may be eligible to *reset their PRA* when they train 3.0 or more FTEs from either existing or new programs in the earliest cost reporting period beginning on or after December 27, 2020 and before December 27, 2025.
- Category B Hospitals may be eligible to *reset their resident cap* if they start a new residency program training at least 3.0 FTEs between December 27, 2020 and before December 27, 2025.

Next Step: Category B Hospitals should confirm the accuracy of their PRA/CAP and then may contact their MAC to request a PRA reset and/or resident cap reset before December 27, 2025.

Table 2: Category B

CCN	Name	County	PRA?	Max PRA
220080	HOLY FAMILY HOSPITAL	ESSEX		133781
223027	ENCOMPASS HEALTH BRAINTREE HOSPITAL OF B	NORFOLK	*	0
220067	QUINCY MEDICAL CENTER	NORFOLK	*	0
224018	ARBOUR HUMAN RESOURCE INSTITUTE	NORFOLK	*	0

An asterisk in the PRA? column denotes that the maximum PRA paid by the hospital is less than benchmark PRA for the region.

3 Never Claimer Hospitals

Never Claimers: Hospitals that have never claimed residents for GME payment on any cost report. This includes hospitals that have had documented resident rotators in the past that were not claimed to establish a Per Resident Amount (PRA), and also hospitals that have never trained residents. For those hospitals that *have* trained residents in the past and never reported them, there is a risk of inadvertently setting a new PRA of zero and of establishing a cap in the future if 1.0 or more FTE of residents are being trained in a fiscal cost report year after 12/27/2020. In some circumstances the data may be incorrect and should be contested by contacting the MAC.

- Check to confirm that you do not have a claimed PRA/cap for all years.
- If you are not training greater than 1.0 FTEs right now, you do not need to contact your MAC until you begin training 1.0 or more FTEs.

Next Step: Any hospital that is in this category of “Never Claimer” that has trained 1.0 or more FTE in any fiscal cost report year following 12/27/20 MUST begin claiming those resident FTE as of that cost report year. The documentation maintained by the hospital regarding the costs it incurred in training those FTE will establish the PRA for that hospital, and may or may not start the cap-setting period. Note that such a hospital that reports no costs is at high risk of establishing a PRA of ZERO, that will remain established into the future.

Table 3: Never Claimers

CCN	Name	County
220172	UNIVERSITY HEALTH SERVICES	City: AMHERST
223304	SHRINERS’ HOSPITAL FOR CHILDREN - BOSTON	City: BOSTON
222025	PAPPAS REHABILITATION HOSPITAL FOR CHILD	City: CANTON
220029	ANNA JAQUES HOSPITAL	City: NEWBURYPORT
220030	BAYSTATE WING HOSPITAL	City: PALMER
220019	UMASS MEMORIAL HEALTH - HARRINGTON HOSPIT	City: SOUTHBRIDGE
223303	SHRINERS’ HOSPITAL FOR CHILDREN (THE)	City: SPRINGFIELD
224044	WESTBOROUGH BEHAVIORAL HEALTHCARE HOSPIT	City: WESTBOROUGH
224039	WHITTIER PAVILION	ARCHER
223032	SPAULDING REHABILITATION HOSPITAL - CAPE	BARNSTABLE
224031	CAPE COD & ISLANDS COMMUNITY MENTAL HEAL	BARNSTABLE
220135	FALMOUTH HOSPITAL	BARNSTABLE
220051	NORTH ADAMS REGIONAL HOSPITAL	BERKSHIRE
220073	MORTON HOSPITAL	BRISTOL
224041	SOUTHCOAST BEHAVIORAL HEALTH	BRISTOL
224001	TAUNTON STATE HOSPITAL	BRISTOL
222043	VIBRA HOSPITAL OF SOUTHEASTERN MASSACHUS	BRISTOL
220074	SOUTHCOAST HOSPITALS GROUP	BRISTOL

Continued on next page

Table 3 – Continued from previous page

CCN	Name	County
224028	DR JOHN C CORRIGAN MENTAL HEALTH CENTER	BRISTOL
220008	STURDY MEMORIAL HOSPITAL	BRISTOL
224021	ARBOUR-FULLER HOSPITAL	BRISTOL
224045	HOSPITAL FOR BEHAVIORAL MEDICINE	COLES
222044	CURAHEALTH BOSTON NORTH SHORE	ESSEX
224033	BALDPATE HOSPITAL	ESSEX
220174	MERRIMACK VALLEY HOSPITAL	ESSEX
222026	SPAULDING HOSPITAL FOR CONTINUING MC - N	ESSEX
222047	WHITTIER REHABILITATION HOSPITAL - BRADF	ESSEX
220016	BAYSTATE FRANKLIN MEDICAL CENTER	FRANKLIN
223030	ENCOMPASS HEALTH REHAB HOSPITAL OF WESTE	HAMPDEN
222046	VIBRA HOSPITAL OF WESTERN MASS - CENTRAL	HAMPDEN
222023	WESTERN MASSACHUSETTS HOSPITAL	HAMPDEN
220024	HOLYOKE MEDICAL CENTER	HAMPDEN
220065	BAYSTATE NOBLE HOSPITAL	HAMPDEN
220153	SOLDIERS HOME OF HOLYOKE	HAMPDEN
220066	MERCY MEDICAL CTR	HAMPDEN
220050	BAYSTATE MARY LANE HOSPITAL	HAMPSHIRE
220015	COOLEY DICKINSON HOSPITAL INC,THE	HAMPSHIRE
222003	TEWKSBURY HOSPITAL	MIDDLESEX
220082	SAINTS MEDICAL CENTER INC	MIDDLESEX
220098	NASHOBA VALLEY MEDICAL CENTER	MIDDLESEX
224043	TARAVISTA BEHAVIORAL HEALTH CENTER	MIDDLESEX
220084	EMERSON HOSPITAL -	MIDDLESEX
220063	LOWELL GENERAL HOSPITAL	MIDDLESEX
220177	NANTUCKET COTTAGE HOSPITAL	NANTUCKET
220100	SOUTH SHORE HOSPITAL	NORFOLK
224023	WESTWOOD PEMBROKE HEALTH SYSTEMS	NORFOLK
221990	CHESTNUT HILL BENEVOLENT ASSOCIATION	NORFOLK
220108	BETH ISRAEL DEACONESS HOSPITAL - MILTON	NORFOLK
220126	NORWOOD HOSPITAL	NORFOLK
222002	CURAHEALTH STOUGHTON	NORFOLK
220060	BETH ISRAEL DEACONESS HOSPITAL PLYMOUTH	PLYMOUTH
224042	HIGH POINT TREATMENT CENTER	PLYMOUTH
222010	RADIUS SPECIALTY HOSPITAL-BOSTON	SUFFOLK
224013	ARBOUR HOSPITAL	SUFFOLK
224040	DR SOLOMON CARTER FULLER MENTAL HEALTH C	SUFFOLK
222007	HEBREW REHABILITATION CENTER	SUFFOLK
224038	WALDEN BEHAVIORAL CARE, LLC	SUFFOLK
222045	CURAHEALTH BOSTON	SUFFOLK
220154	SOLDIERS HOME IN MASSACHUSETTS	SUFFOLK
222048	WHITTIER REHABILITATION HOSPITAL	WORCESTER
220095	HEYWOOD HOSPITAL -	WORCESTER
220062	ADCARE HOSPITAL OF WORCESTER INC	WORCESTER
224032	WORCESTER RECOVERY CENTER AND HOSPITAL	WORCESTER
220058	CLINTON HOSPITAL ASSOCIATION	WORCESTER

4 All Other Hospitals

“Non-A Non-B” established teaching hospitals: Hospitals that don’t appear to qualify for a PRA/cap reset because they have claimed FTE greater than the eligibility criteria for category A (at least 1.0 FTE) or category B (more than 3.0 FTE).

Next Step:“Non-A Non-B” should confirm that they are not in fact eligible for a PRA/cap reset.

Table 4: Neither Category A nor Category B

CCN	Name	County	PRA?	Max PRA
220033	NORTHEAST HOSPITAL CORPORATION	City: BEVERLY	*	108928
220104	BOSTON MED CTR CORP/BOSTON CITY CAMPUS	City: BOSTON	*	74285
222035	SPAULDING REHABILITATION HOSPITAL	City: BOSTON		131789
220089	METROWEST MEDICAL CENTER	City: FRAMINGHAM	*	76460
220094	HEALTH ALLIANCE HOSP LEOMINSTER CAMPUS	City: LEOMINSTER	*	38733
220092	MALDEN HOSPITAL,THE	City: MALDEN	*	98614
220006	SALEM HOSPITAL CORPORATION,THE	City: SALEM	*	84300
220076	WALTHAM HOSPITAL	City: WALTHAM	*	109562
220105	WINCHESTER HOSPITAL	City: WINCHESTER	*	110683
220057	UMASS MEMORIAL MED CTR-MEMORIAL CAMP	City: WORCESTER	*	67816
220028	ST VINCENT HOSPITAL	City: WORCESTER	*	104095
220012	CAPE COD HEALTHCARE	BARNSTABLE	*	117894
220046	BERKSHIRE MEDICAL CENTER	BERKSHIRE		134757
220020	SAINT ANNE'S HOSPITAL	BRISTOL		125273
220035	NORTH SHORE MEDICAL CENTER -	ESSEX	*	113334
220010	LAWRENCE GENERAL HOSPITAL	ESSEX		132498
220077	BAYSTATE MEDICAL CENTER	HAMPDEN		155488
220101	NEWTON-WELLESLEY HOSPITAL	MIDDLESEX		155958
222000	SPAULDING HOSPITAL FOR CONTINUING MED CA	MIDDLESEX	*	86238
220070	MELROSEWAKEFIELD HEALTHCARE	MIDDLESEX		138631
220171	LAHEY HOSPITAL & MEDICAL CENTER, BURLING	MIDDLESEX		150002
220002	MOUNT AUBURN HOSPITAL	MIDDLESEX	*	102591
220175	METROWEST MEDICAL CENTER	MIDDLESEX	*	104483
220011	CAMBRIDGE HEALTH ALLIANCE	MIDDLESEX	*	112881
223026	ENCOMPASS HEALTH REHABILITATION HOSP OF	MIDDLESEX	*	112336
224007	MCLEAN HOSPITAL CORPORATION	MIDDLESEX	*	103206
220049	UMASS MEMORIAL HEALTHCARE-MARLBOROUGH HO	MIDDLESEX	*	86732
222027	NEW ENGLAND SINAI HOSPITAL	NORFOLK	*	109448
220052	SIGNATURE HEALTHCARE BROCKTON HOSPITAL	PLYMOUTH		148460
220111	GOOD SAMARITAN MEDICAL CENTER	PLYMOUTH	*	97567
223034	SPAULDING REHABILITATION HOSPITAL	SUFFOLK		168974
220075	MASSACHUSETTS EYE AND EAR INFIRMARY -	SUFFOLK		133428
222006	LEMUEL SHATTUCK HOSPITAL	SUFFOLK	*	103923
223302	BOSTON CHILDREN'S HOSPITAL	SUFFOLK	*	102591
220031	BOSTON MEDICAL CENTER	SUFFOLK		119240
220162	DANA-FARBER CANCER INSTITUTE	SUFFOLK	*	102582
220088	NEW ENGLAND BAPTIST HOSPITAL	SUFFOLK	*	102591
220071	MASSACHUSETTS GENERAL HOSPITAL	SUFFOLK		133835
220086	BETH ISRAEL DEACONESS MEDICAL CENTER	SUFFOLK		161608
220036	ST ELIZABETH'S MEDICAL CENTER	SUFFOLK		133311
220119	FAULKNER HOSPITAL-BRIGHAM AND WOMEN'S	SUFFOLK		141920
223300	FRANCISCAN CHILDREN'S HOSPITAL & REHAB C	SUFFOLK	*	10
220116	TUFTS MEDICAL CENTER	SUFFOLK	*	109272
220110	BRIGHAM AND WOMEN'S HOSPITAL	SUFFOLK	*	114940
220017	CARNEY HOSPITAL	SUFFOLK		134252
220090	MILFORD REGIONAL MEDICAL CENTER	WORCESTER	*	114008
220176	ST VINCENT HOSPITAL	WORCESTER		145332
220163	UMASS MEMORIAL MEDICAL CENTER/UNIVERSITY	WORCESTER	*	98720
220001	HEALTHALLIANCE HOSPITALS, INC	WORCESTER	*	100127

An asterisk in the PRA? column denotes that the maximum PRA paid by the hospital is less than benchmark PRA for the region.

Additional Resources:

- **Rural GME HCRIS Data Tool:** Tool used to determine whether a hospital potentially qualifies for a PRA reset.
- **CMS Provider Number Lookup:** Tool used to determine your hospital provider number. You can also find your provider number using the Rural GME HCRIS Data Tool in the state list.
- **Impact of CMS Rule Changes on Rural GME: A Deeper Dive into Section 131:** RRPD-TAC webinar on Section 131.
- **CMS Guidance on Section 131:** FAQ published by CMS on hospitals eligible to reset PRA/Cap.
- **How to contact a Medicare Administrative Contractor (MAC):** CMS website with MAC contact information.
- **The FY22 IPPS Final Rule,** beginning page 73416, contains the formal regulations.

Acknowledgement

Disclaimer: The grant program is supported by the Health Resources and Services Administration of the U.S. Department of Health and Human Services under cooperative agreement #UK6RH32513. The content does not necessarily represent the official views of, nor an endorsement, by HRSA, HHS, or the U.S. Government.