

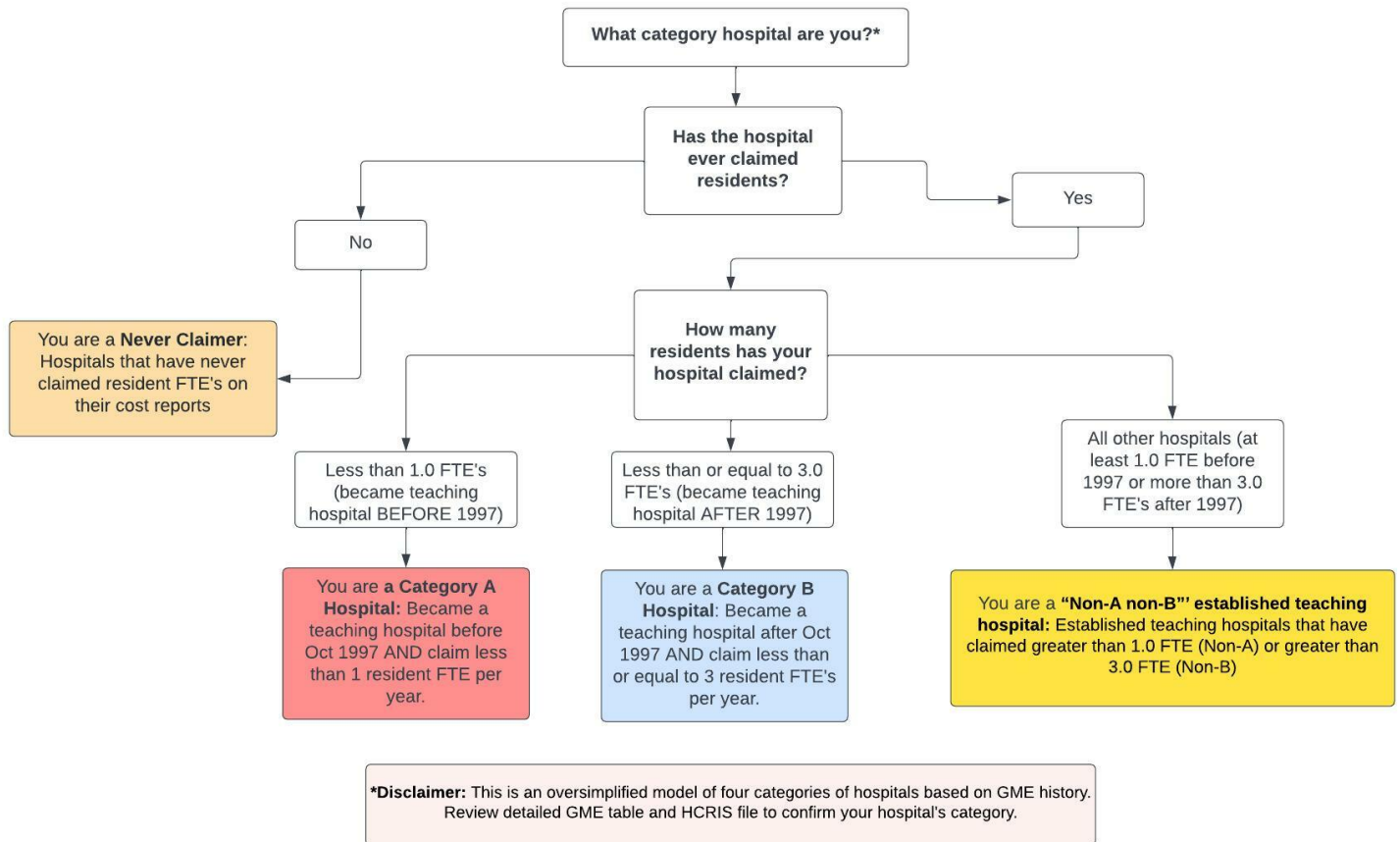
## Section 131 GME Tables for Louisiana

This report classifies each hospital in the state into four groups based on data provided by the Centers for Medicare & Medicaid Services to aid in determining a hospital's eligibility to revise certain GME parameters under Section 131 of the CAA. For more details, visit the CMS website here. Classifications were prepared by staff of the Rural Residency Planning and Development (RRPD) and Teaching Health Center Planning and Development (THCPD) Technical Assistance Centers using data provided by CMS; hospitals are encouraged to confirm all data presented. The tables below are presented as a screening, are not definitive, and may differ from the classifications determined by CMS, the MAC, or other regulatory bodies. Further information, including data, presentations, and tools are available at RuralGME.org

### Overview

Hospitals — **with the exception of Critical Access Hospitals** – are classified into four categories based on their historical GME funding and expense. **Category A** and **Category B** Hospitals first claimed a few residents. Generally speaking, a Category A hospital first claimed fewer than 1.0 residents prior to October 1, 1997; a Category B hospital first claimed no more than 3.0 residents on or after October 1, 1997. **Never Claimer** hospitals have not claimed GME on a cost report since 1996. **All other hospitals** meet none of the three categories – we call these “Non-A Non-B Hospitals.” Note that **Critical Access Hospitals** are paid for GME by an entirely different mechanism and are omitted from all lists below; information about this is available at RuralGME.org. The following figure presents an oversimplified, high-level overview.

### Overview of Categorization Process



We recommend State Offices of Rural Health encourage **Category A and Category B** hospitals to carefully review their categorization using the Rural GME HCRIS Data Tool, **Never Claimers** to verify that they indeed have not claimed GME, and **Non-A and Non-B Hospitals** to confirm that they do not meet the qualifications for Category A or Category B.

Further details for each category are provided below. Note that hospital names are truncated to 40 characters. An asterisk in the “PRA?” column denotes that the maximum PRA paid by the hospital is less than benchmark PRA for the region. Each table is sorted by the county of the hospital; for hospitals that could not be assigned to a county, the city of the mailing address is provided.

**For All Hospital Types:** If you check the HCRIS data and believe it is inaccurate then you must electronically submit complete and unambiguous documentation to your MAC **no later than July 1, 2022** contesting the HCRIS data.

## 1 Category A Hospitals

**Category A:** Hospitals that became teaching hospitals (set PRA and cap) before October 1997 where that PRA and cap (either or both of DGME and IME) were set based on an FTE of less than 1.0.

- Category A hospitals may be eligible to *reset their PRA* when they train 1.0 or more FTEs from either existing or new programs in the earliest cost reporting period beginning on or after December 27, 2020 and before December 27, 2025.
- Category A Hospitals may be eligible to *reset their resident cap* if they start a new residency program training at least 1.0 FTEs between December 27, 2020 and before December 27, 2025.

*Next Step:* Category A Hospitals should confirm the accuracy of their PRA/CAP and then may contact their MAC to request a PRA reset and/or resident cap reset before December 27, 2025.

Table 1: Category A

CCN	Name	County	PRA?	Max PRA
190182	LAKESIDE HOSPITAL	City: METAIRIE		107926
190015	NORTH OAKS MEDICAL CENTER, L L C	TANGIPAHOA PARISH	*	54349

An asterisk in the PRA? column denotes that the maximum PRA paid by the hospital is less than benchmark PRA for the region.

## 2 Category B Hospitals

**Category B:** Hospitals that became teaching hospitals (set PRA and cap) after October 1997 through January 2021 where that PRA and cap (either or both of DGME and IME) were set based on an FTE of less than 3.0.

- Category B hospitals may be eligible to *reset their PRA* when they train 3.0 or more FTEs from either existing or new programs in the earliest cost reporting period beginning on or after December 27, 2020 and before December 27, 2025.
- Category B Hospitals may be eligible to *reset their resident cap* if they start a new residency program training at least 3.0 FTEs between December 27, 2020 and before December 27, 2025.

*Next Step:* Category B Hospitals should confirm the accuracy of their PRA/CAP and then may contact their MAC to request a PRA reset and/or resident cap reset before December 27, 2025.

Table 2: Category B

CCN	Name	County	PRA?	Max PRA
190019	CHRISTUS ST FRANCES CABRINI HOSPITAL	City: ALEXANDRIA	*	61033
190128	WOMANS HOSPITAL	City: BATON ROUGE	*	87923
190308	ST BERNARD PARISH HOSPITAL	City: CHALMETTE		131523
192033	P A M SPECIALTY HOSPITAL OF LAFAYETTE	City: LAFAYETTE	*	0
190200	LAKELAND MEDICAL CENTER	City: NEW ORLEANS	*	71270
190027	CHRISTUS OCHSNER ST PATRICK HOSPITAL	CALCASIEU PARISH		299240
190205	WOMEN'S AND CHILDREN'S HOSPITAL	LAFAYETTE PARISH	*	0
190079	ST CHARLES PARISH HOSPITAL	ST. CHARLES PARISH		155834
190001	WASHINGTON ST TAMMANY REGIONAL MEDICAL	WASHINGTON		146425

An asterisk in the PRA? column denotes that the maximum PRA paid by the hospital is less than benchmark PRA for the region.

### 3 Never Claimer Hospitals

**Never Claimers:** Hospitals that have never claimed residents for GME payment on any cost report. This includes hospitals that have had documented resident rotators in the past that were not claimed to establish a Per Resident Amount (PRA), and also hospitals that have never trained residents. For those hospitals that *have* trained residents in the past and never reported them, there is a risk of inadvertently setting a new PRA of zero and of establishing a cap in the future if 1.0 or more FTE of residents are being trained in a fiscal cost report year after 12/27/2020. In some circumstances the data may be incorrect and should be contested by contacting the MAC.

- Check to confirm that you do not have a claimed PRA/cap for all years.
- If you are not training greater than 1.0 FTEs right now, you do not need to contact your MAC until you begin training 1.0 or more FTEs.

*Next Step:* Any hospital that is in this category of “Never Claimer” that has trained 1.0 or more FTE in any fiscal cost report year following 12/27/20 MUST begin claiming those resident FTE as of that cost report year. The documentation maintained by the hospital regarding the costs it incurred in training those FTE will establish the PRA for that hospital, and may or may not start the cap-setting period. Note that such a hospital that reports no costs is at high risk of establishing a PRA of ZERO, that will remain established into the future.

Table 3: Never Claimers

CCN	Name	County
194022	LONGLEAF HOSPITAL	City: ALEXANDRIA
190116	MOREHOUSE GENERAL HOSPITAL	City: BASTROP
194105	APOLLO BEHAVIORAL HEALTH HOSPITAL, L L C	City: BATON ROUGE
190316	THE GENERAL	City: BATON ROUGE
190251	SURGICAL SPECIALTY CENTER OF BATON ROUGE	City: BATON ROUGE
194103	SEASIDE HEALTH SYSTEM	City: BATON ROUGE
190266	THE SPINE HOSPITAL OF LOUISIANA	City: BATON ROUGE
193094	PATHWAY REHABILITATION HOSPITAL OF BOSSI	City: BOSSIER CITY
194089	GENESIS BEHAVIORAL HOSPITAL	City: BREAUX BRIDGE
190184	CITIZENS MEDICAL CENTER	City: COLUMBIA
190044	ACADIA GENERAL HOSPITAL	City: CROWLEY
190242	ST ELIZABETH HOSPITAL	City: GONZALES
190303	CYPRESS POINTE SURGICAL HOSPITAL	City: HAMMOND

*Continued on next page*

Table 3 – Continued from previous page

CCN	Name	County
192037	HOUMA - AMG SPECIALTY HOSPITAL	City: HOUMA
193067	REHABILITATION HOSPITAL OF JENNINGS	City: JENNINGS
190314	SOUTHEAST REGIONAL MEDICAL CENTER	City: KENTWOOD
194114	RIVER PLACE BEHAVIORAL HEALTH	City: LA PLACE
190268	LAFAYETTE GENERAL SURGICAL HOSPITAL	City: LAFAYETTE
190102	OUR LADY OF LOURDES REGIONAL MEDICAL CEN	City: LAFAYETTE
194078	OPTIMA SPECIALTY HOSPITAL	City: LAFAYETTE
190259	LAFAYETTE SURGICAL SPECIALTY HOSPITAL	City: LAFAYETTE
194044	VERMILION BEHAVIORAL HEALTH SYSTEMS	City: LAFAYETTE
190263	HEART HOSPITAL OF LAFAYETTE	City: LAFAYETTE
190201	CHRISTUS OCHSNER LAKE AREA HOSPITAL	City: LAKE CHARLES
190208	EAST CARROLL PARISH HOSPITAL	City: LAKE PROVIDENCE
194007	NORTHLAKE BEHAVIORAL HEALTH SYSTEM	City: MANDEVILLE
190245	MONROE SURGICAL HOSPITAL	City: MONROE
190125	ST FRANCIS MEDICAL CENTER	City: MONROE
190014	OCHSNER ST MARY	City: MORGAN CITY
190054	IBERIA MEDICAL CENTER	City: NEW IBERIA
193098	COBALT REHABILITATION HOSPITAL NEW ORLEA	City: NEW ORLEANS
194042	RIVER OAKS CHILD & ADOLESCENT HOSPITAL	City: NEW ORLEANS
190313	NEW ORLEANS EAST HOSPITAL	City: NEW ORLEANS
192009	CURAHEALTH NEW ORLEANS	City: NEW ORLEANS
190081	WEST CARROLL MEMORIAL HOSPITAL	City: OAK GROVE
190017	OPELOUSAS GENERAL HEALTH SYSTEM	City: OPELOUSAS
190086	NORTHERN LOUISIANA MEDICAL CENTER	City: RUSTON
193301	SHRINERS HOSPITALS FOR CHILDREN	City: SHREVEPORT
190204	OCHSNER MEDICAL CENTER - NORTHSHORE, L L	City: SLIDELL
190088	SPRINGHILL MEDICAL CENTER	City: SPRINGHILL
190013	WEST CALCASIEU CAMERON HOSPITAL	City: SULPHUR
190020	LANE REGIONAL MEDICAL CENTER	City: ZACHARY
192050	KAILO L T A C HOSPITAL, L L C	ACADIA
194097	PHOENIX BEHAVIORAL HOSPITAL	ACADIA
194085	COMPASS BEHAVIORAL CENTER OF LAFAYETTE	ACADIA PARISH
192045	SEASIDE HEALTH SYSTEM	ACENSION
190106	OAKDALE COMMUNITY HOSPITAL	ALLEN
190133	ALLEN PARISH HOSPITAL	ALLEN
194088	ST JAMES BEHAVIORAL HEALTH HOSPITAL, INC	ASCENSION
193089	ASCENSION GONZALES REHABILITATION HOSPIT	ASCENSION
190099	AVOYELLES HOSPITAL	AVOYELLES PARISH
194112	BEACON BEHAVIORAL HOSPITAL - CENTRAL	AVOYELLES PARISH
194071	CYPRESS PSYCHIATRIC HOSPITAL	BATON ROUGE
190050	BEAUREGARD MEMORIAL HOSPITAL	BEAUREGARD
194081	OCEANS BEHAVIORAL HOSPITAL OF DERIDDER	BEAUREGARD PARISH
194079	RED RIVER BEHAVIORAL CENTER, LLC	BOSSIER PARISH
190236	WILLIS KNIGHTON BOSSIER HEALTH CENTER	BOSSIER PARISH
192006	CORNERSTONE SPECIALTY HOSPITALS BOSSIER	BOSSIER PARISH
192025	DUBUIS HOSPITAL OF SHREVEPORT	CADDO
190278	SPECIALISTS HOSPITAL SHREVEPORT	CADDO PARISH
192011	PAM SPECIALTY HOSPITAL OF SHREVEPORT SOU	CADDO PARISH
192010	INTENSIVE SPECIALTY HOSPITAL	CADDO PARISH
194094	PHYSICIANS BEHAVIORAL HOSPITAL	CADDO PARISH
194020	BRENTWOOD HOSPITAL	CADO
192024	DUBUIS HOSPITAL OF LAKE CHARLES	CALCASIEU
194090	OCEANS BEHAVIORAL HOSPITAL OF LAKE CHARL	CALCASIEU PARISH
192013	CORNERSTONE SPECIALTY HOSPITALS SOUTHWES	CALCASIEU PARISH

Continued on next page

Table 3 – Continued from previous page

CCN	Name	County
190315	AVAIL HOSPITAL LAKE CHARLES	CALCASIEU PARISH
190190	CALDWELL MEMORIAL HOSPITAL, INC	CALDWELL PARISH
190307	SOUTH CAMERON MEMORIAL HOSPITAL	CAMERON
192028	RIVERBRIDGE SPECIALTY HOSPITAL	CONCORDIA PARISH
190118	DESOTO REGIONAL HEALTH SYSTEM	DE SOTO
194110	OCEANS BEHAVIORAL HOSPITAL OF DESOTO	DESOTO
194086	OCEANS BEHAVIORAL HOSPITAL OF BATON ROUG	E. BATON ROUGE PARISH
190202	OCHSNER MEDICAL CENTER - BATON ROUGE	E. BATON ROUGE PARISH
192049	PROMISE HOSPITAL OF BATON ROUGE, INC	E. BATON ROUGE PARISH
193090	THE NEUROMEDICAL CENTER REHABILITATION H	E. BATON ROUGE PARISH
194115	REGIONS BEHAVIORAL HOSPITAL	E. BATON ROUGE PARISH
193078	SAGE REHABILITATION HOSPITAL	E. BATON ROUGE PARISH
192004	KPC PROMISE HOSPITAL OF BATON ROUGE	E. BATON ROUGE PARISH
193092	BETHESDA REHABILITATION HOSPITAL	E. BATON ROUGE PARISH
192041	ZACHARY - A M G SPECIALTY HOSPITAL	E. BATON ROUGE PARISH
190273	GREATER BATON ROUGE SURGICAL HOSPITAL	EAST BATON ROUGE
193028	BATON ROUGE REHAB HOSPITAL	EAST BATON ROUGE
194107	BATON ROUGE BEHAVIORAL HOSPITAL	EAST BATON ROUGE PARISH
190199	VILLA FELICIANA MEDICAL COMPLEX	EAST FELICIANA PARISH
194008	EASTERN LA MENTAL HEALTH SYSTEM	EAST FELICIANA PARISH
190167	MERCY REGIONAL MEDICAL CENTER	EVANGELINE PARISH
190025	SAVOY MEDICAL CENTER	EVANGELINE PARISH
190318	ACADIAN MEDICAL CENTER	EVANGELINE PARISH
190140	FRANKLIN MEDICAL CENTER	FRANKLIN PARISH
190003	DAUTERIVE HOSPITAL	IBERIA
190304	IBERIA REHABILITATION HOSPITAL	IBERIA PARISH
193096	IBERIA REHABILITATION HOSPITAL	IBERIA PARISH
194075	WESTEND HOSPITAL	JEFF DAVIS
193099	OCHSNER REHABILITATION HOSPITAL	JEFFERSON
192030	BLIANT SPECIALTY HOSPITAL, LLC	JEFFERSON
190302	OMEGA HOSPITAL, LLC	JEFFERSON
194098	OCEANS BEHAVIORAL HOSPITAL OF GREATER NE	JEFFERSON PARISH
193074	UNITED MEDICAL HEALTHWEST-NEW ORLEANS	JEFFERSON PARISH
194031	RIVER OAKS HOSPITAL	JEFFERSON PARISH
194113	PERIMETER BEHAVIORAL HOSPITAL OF NEW ORL	JEFFERSON PARISH
192015	OCHSNER EXTENDED CARE HOSPITAL	JEFFERSON PARISH
192007	BRIDGEPOINT CONTINUING CARE HOSPITAL	JEFFERSON PARISH
194082	COMPASS SENIOR CARE HOSPITAL	JEFFERSON DAVIS PARISH
190053	JENNINGS AMERICAN LEGION HOSPITAL	JEFFERSON DAVIS PARISH
190145	LASALLE GENERAL HOSPITAL	LA SALLE PARISH
192020	COMMUNITY REHABILITATION HOSPITAL OF LAF	LAFAYETTE
190255	PARK PLACE SURGICAL HOSPITAL	LAFAYETTE
194073	OCEANS HOSPITAL OF BROUSSARD	LAFAYETTE PARISH
192029	LAFAYETTE - A M G SPECIALTY HOSPITAL	LAFAYETTE PARISH
193093	LAFAYETTE PHYSICAL REHABILITATION HOSPIT	LAFAYETTE PARISH
192032	LOUISIANA EXTENDED CARE HOSPITAL OF LAFA	LAFAYETTE PARISH
190004	THIBODAUX REGIONAL MEDICAL CENTER	LAFOURCHE PARISH
190257	GREEN CLINIC SURGICAL HOSPITAL	LINCOLN
194074	SERENITY SPRINGS SPECIALTY HOSPITAL	LINCOLN
192022	RUSTON REGIONAL SPECIALTY HOSPITAL	LINCOLN PARISH
194087	FREEDOM BEHAVIORAL HOSPITAL OF MONROE	LINCOLN PARISH
192008	SAGE SPECIALTY HOSPITAL	LIVINGSTON PARISH
193069	STERLINGTON REHABILITATION HOSPITAL	MOREHOUSE PARISH
194083	CYPRESS GROVE BEHAVIORAL HEALTH	MOREHOUSE PARISH

Continued on next page

Table 3 – Continued from previous page

CCN	Name	County
192035	LOUISIANA EXTENDED CARE HOSPITAL OF NATC	NATCHITOCHE PARISH
190007	NATCHITOCHE REGIONAL MEDICAL CENTER	NATCHITOCHE PARISH
194100	SEASIDE BEHAVIORAL CENTER	ORLEANS
194056	COMMUNITY CARE HOSPITAL	ORLEANS
192014	CRESCENT CITY SPECIALTY HOSPITAL	ORLEANS
194084	BEACON BEHAVIORAL HOSPITAL- NEW ORLEANS,	ORLEANS PARISH
190300	ST CHARLES SURGICAL HOSPITAL LLC	ORLEANS PARISH
192031	CORNERSTONE SPECIALTY HOSPITALS WEST MON	OUACHITA PARISH
192016	SPECIALTY HOSPITAL	OUACHITA PARISH
193058	RIVERBEND REHABILITATION HOSPITAL	OUACHITA PARISH
192055	LOUISIANA EXTENDED CARE HOSPITAL OF WEST	OUACHITA PARISH
192046	P & S SURGICAL HOSPITAL	OUACHITA PARISH
192061	OUACHITA COMMUNITY HOSPITAL	OUACHITA PARISH
190160	GLENWOOD REGIONAL MEDICAL CENTER	OUACHITA PARISH
194025	CENTRAL LOUISIANA STATE HOSPITAL	RAPIDES
194096	OCEANS BEHAVIORAL HOSPITAL OF ALEXANDRIA	RAPIDES PARISH
192043	RIVERSIDE HOSPITAL OF LOUISIANA	RAPIDES PARISH
190298	CHRISTUS CENTRAL LOUISIANA SURGICAL HOSP	RAPIDES PARISH
192012	CHRISTUS DUBUIS HOSPITAL OF ALEXANDRIA	RAPIDES PARISH
193031	ENCOMPASS HEALTH REHABILITATION HOSPITAL	RAPIDES PARISH
194106	COMPASS BEHAVIORAL CENTER OF ALEXANDRIA,	RAPIDES PARISH
193080	SPECIALTY REHABILITATION HOSPITAL	RED RIVER PARISH
190151	RICHARDSON MEDICAL CENTER	RICHLAND PARISH
190218	SABINE MEDICAL CENTER	SABINE PARISH
194111	KAILO BEHAVIORAL HOSPITAL, L L C	ST LANDRY
190250	LOUISIANA HEART HOSPITAL	ST TAMMANY PARISH
193064	SPECIALTY REHABILITATION HOSPITAL OF LUL	ST. CHARLES
193060	ST CHARLES SPECIALTY REHABILITATION HOSP	ST. CHARLES
194102	BEACON BEHAVIORAL HOSPITAL, INC	ST. JAMES PARISH
194095	OCEANS BEHAVIORAL HOSPITAL OF OPELOUSAS	ST. LANDRY PARISH
192034	ST LANDRY EXTENDED CARE HOSPITAL	ST. LANDRY PARISH
190045	ST TAMMANY PARISH HOSPITAL	ST. TAMMANY
190270	OUR LADY OF THE LAKE SURGICAL HOSPITAL	ST. TAMMANY
194080	BEACON BEHAVIORAL HOSPITAL - NORTHSHORE,	ST. TAMMANY PARISH
192048	P A M SPECIALTY HOSPITAL OF COVINGTON	ST. TAMMANY PARISH
190256	STERLING SURGICAL HOSPITAL	ST. TAMMANY PARISH
190267	AVALA	ST. TAMMANY PARISH
713025	NORTH SHORE REHABILITATION HOSPITAL	ST. TAMMANY PARISH
192023	NORTHSHORE EXTENDED CARE HOSPITAL	ST. TAMMANY PARISH
193097	COVINGTON - A M G PHYSICAL REHABILITATIO	ST. TAMMANY PARISH
192051	COVINGTON - A M G SPECIALTY HOSPITAL	ST. TAMMANY
192036	P A M SPECIALTY HOSPITAL OF HAMMOND	TANGIAHOA
193044	NORTH OAKS REHABILITATION HOSPITAL, L L	TANGIPAHOA PARISH
194091	OCEANS BEHAVIORAL HOSPITAL OF HAMMOND	TANGIPAHOA PARISH
192040	HOLY SPIRIT COMFORT & HEALING CENTERS IN	TANGIPAHOA PARISH
193079	UNITED MEDICAL REHABILITATION HOSPITAL	TANGIPAHOA PARISH
194109	COMPASS BEHAVIORAL CENTER OF HOUMA, LLC	TERREBONNE PARISH
190241	PHYSICIANS MEDICAL CENTER	TERREBONNE PARISH
190008	TERREBONNE GENERAL HEALTH SYSTEM	TERREBONNE PARISH
190034	ABBEVILLE GENERAL HOSPITAL	VERMILION PARISH
190297	DOCTORS HOSPITAL AT DEER CREEK L L C	VERNON
193086	LEESVILLE REHABILITATION HOSPITAL	VERNON
190164	BYRD REGIONAL HOSPITAL	VERNON PARISH
193050	TRI PARISH REHABILITATION HOSPITAL L L C	VERNON PARISH

Continued on next page

Table 3 – Continued from previous page

CCN	Name	County
192046	SLIDELL - A M G SPECIALTY HOSPITAL	WASHINGTON
190144	MINDEN MEDICAL CENTER	WEBSTER PARISH
194076	OCEANS BEHAVIORAL HOSPITAL OF WINNFIELD	WINN
192052	SPECIALTY HOSPITAL OF WINNFIELD, INC	WINN PARISH
190090	WINN PARISH MEDICAL CENTER	WINN PARISH

## 4 All Other Hospitals

**“Non-A Non-B” established teaching hospitals:** Hospitals that don’t appear to qualify for a PRA/cap reset because they have claimed FTE greater than the eligibility criteria for category A (at least 1.0 FTE) or category B (more than 3.0 FTE).

*Next Step:* “Non-A Non-B” should confirm that they are not in fact eligible for a PRA/cap reset.

Table 4: Neither Category A nor Category B

CCN	Name	County	PRA?	Max PRA
190026	RAPIDES REGIONAL MEDICAL CENTER	City: ALEXANDRIA	*	89274
190065	BATON ROUGE GENERAL MEDICAL CENTER	City: BATON ROUGE	*	88259
190064	OUR LADY OF THE LAKE REGIONAL MEDICAL CE	City: BATON ROUGE		104717
190312	OUR LADY OF THE ANGELS HOSPITAL	City: BOGALUSA	*	85700
194069	GREENBRIER BEHAVIORAL HEALTH	City: COVINGTON	*	0
190177	LAKEVIEW REGIONAL MEDICAL CENTER	City: COVINGTON		94260
190114	CLAIBORNE MEMORIAL MEDICAL CENTER	City: HOMER	*	37644
190206	KENNER REGIONAL MEDICAL CENTER	City: KENNER	*	74439
193038	REHABILITATION HOSPITAL OF LAFAYETTE	City: LAFAYETTE	*	53768
190039	WEST JEFFERSON MEDICAL CENTER	City: MARRERO		104291
190146	EAST JEFFERSON GENERAL HOSPITAL	City: METAIRIE		102985
190011	OCHSNER LSU HEALTH MONROE	City: MONROE		147206
193300	CHILDRENS HOSPITAL	City: NEW ORLEANS		133011
190260	LINDY BOGGS MEDICAL CENTER	City: NEW ORLEANS	*	64865
193034	TOURO REHABILITATION CENTER	City: NEW ORLEANS		98585
190036	OCHSNER CLINIC FOUNDATION	City: NEW ORLEANS		154867
190098	OCHSNER LSU HEALTH SHREVEPORT	City: SHREVEPORT	*	89420
190041	CHRISTUS HEALTH SHREVEPORT - BOSSIER	BOSSIER PARISH	*	89404
190111	WILLIS KNIGHTON MEDICAL CENTER, INC	CADDO PARISH	*	88756
190161	W O MOSS REGIONAL MEDICAL CENTER	CALCASIEU		143550
190060	LAKE CHARLES MEMORIAL HOSPITAL	CALCASIEU PARISH	*	88548
192019	MEMORIAL SPECIALTY HOSPITAL	CALCASIEU PARISH	*	0
193070	ACCORD REHABILITATION HOSPITAL	E. BATON ROUGE PARISH	*	0
190122	EARL K LONG MEDICAL CENTER	EAST BATON ROUGE PARISH		132217
190274	OCHSNER MEDICAL CENTER-KENNER	JEFFERSON PARISH		96871
190006	OCHSNER UNIVERSITY HOSPITAL AND CLINICS	LAFAYETTE PARISH		146655
190002	OCHSNER LAFAYETTE GENERAL MEDICAL CENTER	LAFAYETTE PARISH	*	87525
190135	OCHSNER BAPTIST MEDICAL CENTER LLC	ORLEANS	*	83941
190046	TOURO INFIRMARY	ORLEANS		116141
190176	TULANE MEDICAL CENTER	ORLEANS PARISH		153635
190005	UNIVERSITY MEDICAL CENTER NEW ORLEANS	ORLEANS PARISH		94658
190009	HUEY P LONG MEDICAL CENTER	RAPIDES		125468
190040	SLIDELL MEMORIAL HOSPITAL	ST TAMMANY	*	88557

Continued on next page

Table 4 – Continued from previous page

CCN	Name	County	Review PRA?	Max PRA
190175	RIVER PARISHES HOSPITAL	ST. JOHN THE BAPTIST	*	45534
190183	LEONARD J CHABERT MEDICAL CENTER	TERREBONNE PARISH		145991

An asterisk in the PRA? column denotes that the maximum PRA paid by the hospital is less than benchmark PRA for the region.

### Additional Resources:

- **Rural GME HCRIS Data Tool:** Tool used to determine whether a hospital potentially qualifies for a PRA reset.
- **CMS Provider Number Lookup:** Tool used to determine your hospital provider number. You can also find your provider number using the Rural GME HCRIS Data Tool in the state list.
- **Impact of CMS Rule Changes on Rural GME: A Deeper Dive into Section 131:** RRPD-TAC webinar on Section 131.
- **CMS Guidance on Section 131:** FAQ published by CMS on hospitals eligible to reset PRA/Cap.
- **How to contact a Medicare Administrative Contractor (MAC):** CMS website with MAC contact information.
- **The FY22 IPPS Final Rule,** beginning page 73416, contains the formal regulations.

#### Acknowledgement

Disclaimer: The grant program is supported by the Health Resources and Services Administration of the U.S. Department of Health and Human Services under cooperative agreement #UK6RH32513. The content does not necessarily represent the official views of, nor an endorsement, by HRSA, HHS, or the U.S. Government.