

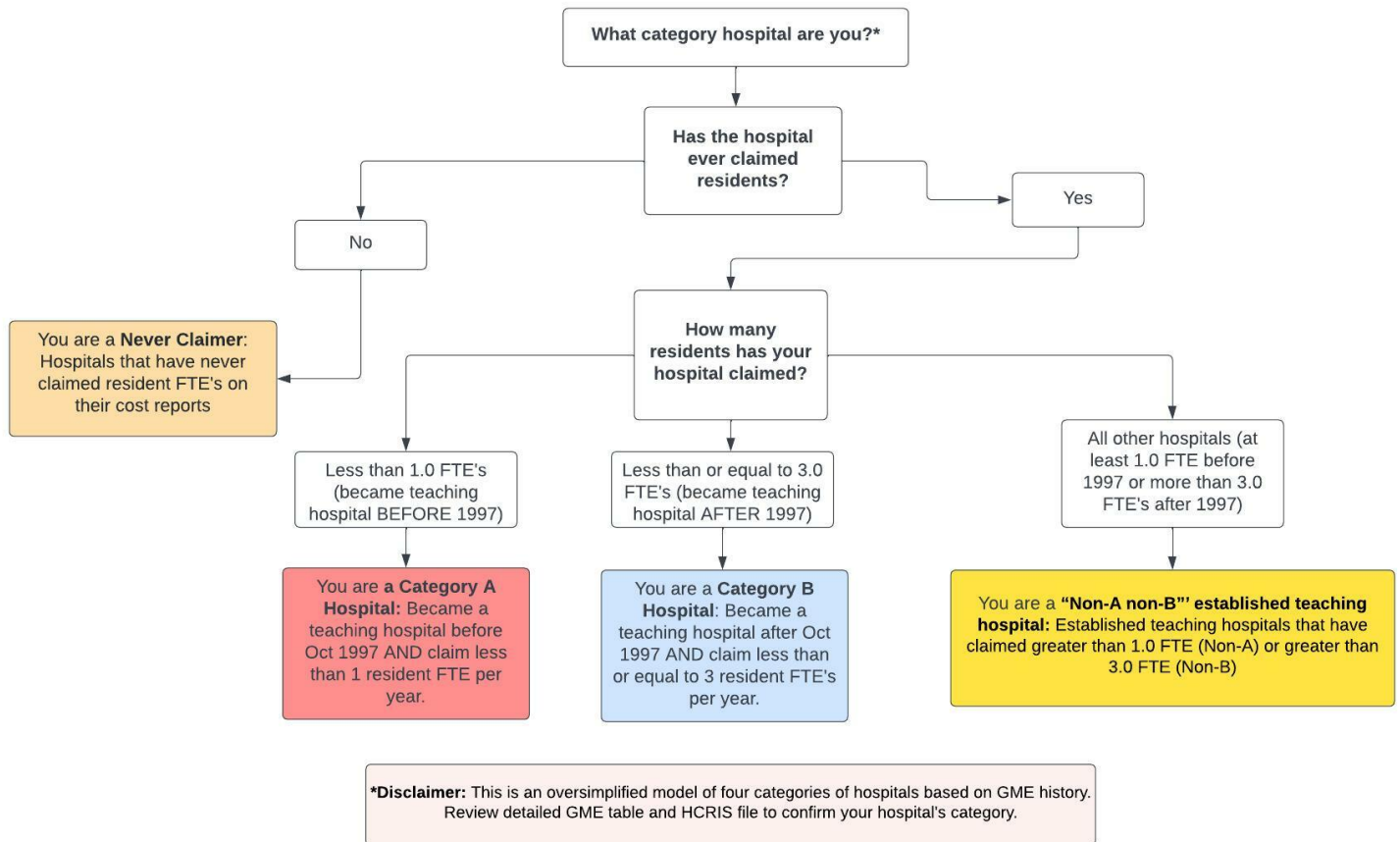
## Section 131 GME Tables for Indiana

This report classifies each hospital in the state into four groups based on data provided by the Centers for Medicare & Medicaid Services to aid in determining a hospital's eligibility to revise certain GME parameters under Section 131 of the CAA. For more details, visit the CMS website here. Classifications were prepared by staff of the Rural Residency Planning and Development (RRPD) and Teaching Health Center Planning and Development (THCPD) Technical Assistance Centers using data provided by CMS; hospitals are encouraged to confirm all data presented. The tables below are presented as a screening, are not definitive, and may differ from the classifications determined by CMS, the MAC, or other regulatory bodies. Further information, including data, presentations, and tools are available at RuralGME.org

### Overview

Hospitals — **with the exception of Critical Access Hospitals** – are classified into four categories based on their historical GME funding and expense. **Category A** and **Category B** Hospitals first claimed a few residents. Generally speaking, a Category A hospital first claimed fewer than 1.0 residents prior to October 1, 1997; a Category B hospital first claimed no more than 3.0 residents on or after October 1, 1997. **Never Claimer** hospitals have not claimed GME on a cost report since 1996. **All other hospitals** meet none of the three categories – we call these “Non-A Non-B Hospitals.” Note that **Critical Access Hospitals** are paid for GME by an entirely different mechanism and are omitted from all lists below; information about this is available at RuralGME.org. The following figure presents an oversimplified, high-level overview.

### Overview of Categorization Process



We recommend State Offices of Rural Health encourage **Category A and Category B** hospitals to carefully review their categorization using the Rural GME HCRIS Data Tool, **Never Claimers** to verify that they indeed have not claimed GME, and **Non-A and Non-B Hospitals** to confirm that they do not meet the qualifications for Category A or Category B.

Further details for each category are provided below. Note that hospital names are truncated to 40 characters. An asterisk in the “PRA?” column denotes that the maximum PRA paid by the hospital is less than benchmark PRA for the region. Each table is sorted by the county of the hospital; for hospitals that could not be assigned to a county, the city of the mailing address is provided.

**For All Hospital Types:** If you check the HCRIS data and believe it is inaccurate then you must electronically submit complete and unambiguous documentation to your MAC **no later than July 1, 2022** contesting the HCRIS data.

## 1 Category A Hospitals

**Category A:** Hospitals that became teaching hospitals (set PRA and cap) before October 1997 where that PRA and cap (either or both of DGME and IME) were set based on an FTE of less than 1.0.

- Category A hospitals may be eligible to *reset their PRA* when they train 1.0 or more FTEs from either existing or new programs in the earliest cost reporting period beginning on or after December 27, 2020 and before December 27, 2025.
- Category A Hospitals may be eligible to *reset their resident cap* if they start a new residency program training at least 1.0 FTEs between December 27, 2020 and before December 27, 2025.

*Next Step:* Category A Hospitals should confirm the accuracy of their PRA/CAP and then may contact their MAC to request a PRA reset and/or resident cap reset before December 27, 2025.

Table 1: Category A

CCN	Name	County	PRA?	Max PRA
150015	FRANCISCAN HEALTH MICHIGAN CITY	City: MICHIGAN CITY	*	54045

An asterisk in the PRA? column denotes that the maximum PRA paid by the hospital is less than benchmark PRA for the region.

## 2 Category B Hospitals

**Category B:** Hospitals that became teaching hospitals (set PRA and cap) after October 1997 through January 2021 where that PRA and cap (either or both of DGME and IME) were set based on an FTE of less than 3.0.

- Category B hospitals may be eligible to *reset their PRA* when they train 3.0 or more FTEs from either existing or new programs in the earliest cost reporting period beginning on or after December 27, 2020 and before December 27, 2025.
- Category B Hospitals may be eligible to *reset their resident cap* if they start a new residency program training at least 3.0 FTEs between December 27, 2020 and before December 27, 2025.

*Next Step:* Category B Hospitals should confirm the accuracy of their PRA/CAP and then may contact their MAC to request a PRA reset and/or resident cap reset before December 27, 2025.

Table 2: Category B

CCN	Name	County	PRA?	Max PRA
150126	FRANCISCAN HEALTH CROWN POINT	City: CROWN POINT	*	92005
150168	THE ORTHOPAEDIC HOSPITAL OF LUTHERAN HEA	City: FORT WAYNE	*	87280
150057	FRANCISCAN HEALTH MOORESVILLE	City: MOORESVILLE	*	92839
150167	ORTHOPAEDIC HOSPITAL AT PARKVIEW NORTH	ALLEN	*	91218
150113	COMMUNITY HOSPITAL OF ANDERSON AND MADIS	MADISON	*	92642
150162	FRANCISCAN HEALTH INDIANAPOLIS	MARION		121888
153028	REHABILITATION HOSPITAL OF INDIANA INC	MARION	*	80963
150154	INDIANA HEART HOSPITAL THE	MARION	*	85409
150169	COMMUNITY HOSPITAL NORTH	MARION	*	96394
150173	INDIANA UNIVERSITY HEALTH ARNETT HOSPITA	TIPPECANOE	*	106855
150048	REID HEALTH	WAYNE	*	99566

An asterisk in the PRA? column denotes that the maximum PRA paid by the hospital is less than benchmark PRA for the region.

### 3 Never Claimer Hospitals

**Never Claimers:** Hospitals that have never claimed residents for GME payment on any cost report. This includes hospitals that have had documented resident rotators in the past that were not claimed to establish a Per Resident Amount (PRA), and also hospitals that have never trained residents. For those hospitals that *have* trained residents in the past and never reported them, there is a risk of inadvertently setting a new PRA of zero and of establishing a cap in the future if 1.0 or more FTE of residents are being trained in a fiscal cost report year after 12/27/2020. In some circumstances the data may be incorrect and should be contested by contacting the MAC.

- Check to confirm that you do not have a claimed PRA/cap for all years.
- If you are not training greater than 1.0 FTEs right now, you do not need to contact your MAC until you begin training 1.0 or more FTEs.

*Next Step:* Any hospital that is in this category of “Never Claimer” that has trained 1.0 or more FTE in any fiscal cost report year following 12/27/20 MUST begin claiming those resident FTE as of that cost report year. The documentation maintained by the hospital regarding the costs it incurred in training those FTE will establish the PRA for that hospital, and may or may not start the cap-setting period. Note that such a hospital that reports no costs is at high risk of establishing a PRA of ZERO, that will remain established into the future.

Table 3: Never Claimers

CCN	Name	County
150088	ASCENSION ST VINCENT ANDERSON	City: ANDERSON
153046	COBALT REHABILITATION HOSPITAL CLARKSVIL	City: CLARKSVILLE
154017	QUINCO CONSULTING CENTER	City: COLUMBUS
150022	FRANCISCAN HEALTH CRAWFORDSVILLE	City: CRAWFORDSVILLE
154060	PARK CENTER, INC	City: FORT WAYNE
154051	WELLSTONE REGIONAL HOSPITAL	City: JEFFERSONVILLE
150146	PARKVIEW NOBLE HOSPITAL	City: KENDALLVILLE
154021	GRANT-BLACKFORD MENTAL HEALTH, INC	City: MARION
150178	CANCER CARE PARTNERS LLC	City: MISHAWAKA
154055	BRENTWOOD MEADOWS LLC	City: NEWBURGH
154047	MICHIANA BEHAVIORAL HEALTH CENTER	City: PLYMOUTH

*Continued on next page*

Table 3 – Continued from previous page

CCN	Name	County
152016	SELECT SPECIALTY HOSPITAL-FORT WAYNE	ALLEN
153030	REHABILITATION HOSPITAL OF FORT WAYNE GE	ALLEN
152027	VIBRA HOSPITAL OF FORT WAYNE	ALLEN
150150	DUPONT HOSPITAL LLC	ALLEN
150112	COLUMBUS REGIONAL HOSPITAL	BARTHOLOMEW
150104	WITHAM HEALTH SERVICES	BOONE
154035	FOUR COUNTY COUNSELING CENTER	CASS
150072	MEMORIAL HOSPITAL	CASS
154066	BRIGHTWELL BEHAVIORAL HEALTH	CLARK
150163	SAINT CATHERINE REGIONAL HOSPITAL	CLARK
150176	KENTUCKIANA MEDICAL CENTER LLC	CLARK
150061	DAVISS COMMUNITY HOSPITAL	DAVISS
154011	COMMUNITY MENTAL HEALTH CENTER INC	DEARBORN
150086	ST ELIZABETH DEARBORN HOSPITAL	DEARBORN
150045	PARKVIEW DEKALB HOSPITAL	DEKALB
154053	MERIDIAN SERVICES CORP	DELAWARE
152025	CENTRAL INDIANA AMG SPECIALTY HOSPITAL	DELAWARE
150018	ELKHART GENERAL HOSPITAL	ELKHART
154031	OAKLAWN PSYCHIATRIC CENTER INC	ELKHART
150026	GOSHEN HOSPITAL	ELKHART
150064	FAYETTE REGIONAL HEALTH SYSTEM	FAYETTE
153037	SOUTHERN INDIANA REHABILITATION HOSPITAL	FLOYD
150172	PHYSICIANS' MEDICAL CENTER LLC	FLOYD
150044	BAPTIST HEALTH FLOYD	FLOYD
150011	MARION GENERAL HOSPITAL	GRANT
150157	ASCENSION ST VINCENT CARMEL	HAMILTON
150161	INDIANA UNIVERSITY HEALTH NORTH HOSPITAL	HAMILTON
150059	RIVERVIEW HEALTH	HAMILTON
150181	ASCENSION ST VINCENT FISHERS	HAMILTON
150153	ST VINCENT HEART CENTER	HAMILTON
150037	HANCOCK REGIONAL HOSPITAL	HANCOCK
150158	IU HEALTH WEST HOSPITAL	HENDRICKS
150184	ST VINCENT NEIGHBORHOOD HOSPITAL	HENDRICKS
150005	HENDRICKS REGIONAL HEALTH	HENDRICKS
150030	HENRY COUNTY MEMORIAL HOSPITAL	HENRY
150010	ASCENSION ST VINCENT KOKOMO	HOWARD
153039	COMMUNITY HOWARD SPECIALTY HOSPITAL	HOWARD
150007	COMMUNITY HOWARD REGIONAL HEALTH INC.	HOWARD
150091	PARKVIEW HUNTINGTON HOSPITAL	HUNTINGTON
150065	SCHNECK MEDICAL CENTER	JACKSON
150069	KING'S DAUGHTERS' HEALTH	JEFFERSON
153044	COMMUNITY HEALTH NETWORK REHABILITATION	JOHNSON
150001	JOHNSON MEMORIAL HOSPITAL	JOHNSON
154024	VALLE VISTA HEALTH SYSTEM	JOHNSON
152008	KINDRED HOSPITAL- INDIANAPOLIS SOUTH	JOHNSON
154014	OTIS R BOWEN CENTER FOR HUMAN SERVICES I	KOSCIUSKO
150133	KOSCIUSKO COMMUNITY HOSPITAL	KOSCIUSKO
150006	NORTHWEST HEALTH-LA PORTE	LA PORTE
154020	REGIONAL MENTAL HEALTH CENTER	LAKE
150125	COMMUNITY HOSPITAL	LAKE
150166	PINNACLE HOSPITAL	LAKE
150165	FRANCISCAN HEALTH MUNSTER	LAKE
152012	KINDRED HOSPITAL NORTHWEST INDIANA	LAKE
152024	REGENCY HOSPITAL OF NORTHWEST INDIANA	LAKE

Continued on next page

Table 3 – Continued from previous page

CCN	Name	County
154065	NEURO BEHAVIORAL HOSPITAL	LAKE
152028	VIBRA HOSPITAL OF NORTHWESTERN INDIANA	LAKE
150008	ST CATHERINE HOSPITAL INC	LAKE
153045	COMMUNITY STROKE AND REHABILITATION CENT	LAKE
154062	ASSURANCE HEALTH PSYCHIATRIC HOSPITAL	MADISON
154064	ASSURANCE HEALTH PSYCHIATRIC HOSPITAL	MARION
152013	KINDRED HOSPITAL INDIANAPOLIS NORTH	MARION
154063	NEUROPSYCHIATRIC HOSPITAL OF INDIANAPOLI	MARION
152020	ASCENSION ST VINCENT SETON SPECIALTY HOS	MARION
150182	FRANCISCAN HEALTH CARMEL	MARION
154034	FAIRBANKS HOSPITAL INC	MARION
153043	COMMUNITY HEALTH NETWORK REHABILITATION	MARION
154057	OPTIONS BEHAVIORAL HEALTH SYSTEM	MARION
150160	ORTHOINDY HOSPITAL	MARION
150179	FAIRBANKS	MARION
152007	KINDRED HOSPITAL INDIANAPOLIS	MARION
154058	DOCTORS NEUROPSYCHIATRIC HOSPITAL	MARSHALL
150180	DOCTORS NEUROMEDICAL HOSPITAL & BRAIN IN	MARSHALL
150076	SAINT JOSEPH REGIONAL MEDICAL CENTER - P	MARSHALL
153040	DOCTORS NEUROMEDICAL HOSPITAL & BRAIN IN	MARSHALL
150051	INDIANA UNIVERSITY HEALTH BLOOMINGTON HO	MONROE
150183	MONROE HOSPITAL	MONROE
150164	MONROE HOSPITAL	MONROE
154041	BLOOMINGTON MEADOWS HOSPITAL	MONROE
150038	INDIANA UNIVERSITY HEALTH MORGAN HOSPITA	MORGAN
154050	NORTHEASTERN CENTER	NOBLE
150035	NORTHWEST HEALTH - PORTER	PORTER
154052	PORTER-STARKE SERVICES INC	PORTER
150097	MAJOR HOSPITAL	SHELBY
150177	UNITY PHYSICIANS HOSPITAL	ST. JOSEPH
154061	MEDICAL BEHAVIORAL HOSPITAL - MISHAWAKA	ST. JOSEPH
152026	RIVERCREST SPECIALTY HOSPITAL	ST. JOSEPH
152018	KINDRED HOSPITAL NORTHERN INDIANA	ST. JOSEPH
150102	NORTHWEST HEALTH - STARKE	STARKE
154059	SYCAMORE SPRINGS	TIPPECANOE
150109	FRANCISCAN HEALTH LAFAYETTE	TIPPECANOE
154005	WABASH VALLEY ALLIANCE, INC. / RIVER BEN	TIPPECANOE
150003	FRANCISCAN ST ELIZABETH HEALTH - LAFAYET	TIPPECANOE
153042	LAFAYETTE REGIONAL REHABILITATION HOSPIT	TIPPECANOE
152021	ST VINCENT SETON SPECIALTY HOSPITAL LAFA	TIPPECANOE
154056	EVANSVILLE STATE HOSPITAL	VANDERBURGH
153025	ENCOMPASS HEALTH DEACONESS REHABILITATIO	VANDERBURGH
152014	SELECT SPECIALTY HOSPITAL-EVANSVILLE	VANDERBURGH
150046	TERRE HAUTE REGIONAL HOSPITAL	VIGO
154009	HAMILTON CENTER INC	VIGO
154054	HARSHA BEHAVIORAL CENTER INC	VIGO
150175	THE HEART HOSPITAL AT DEACONESS GATEWAY	WARRICK
150149	WOMEN'S HOSPITAL THE	WARRICK
154018	RICHMOND STATE HOSPITAL	WAYNE
150075	BLUFFTON REGIONAL MEDICAL CENTER	WELLS
150101	PARKVIEW WHITLEY HOSPITAL	WHITLEY

## 4 All Other Hospitals

**“Non-A Non-B” established teaching hospitals:** Hospitals that don’t appear to qualify for a PRA/cap reset because they have claimed FTE greater than the eligibility criteria for category A (at least 1.0 FTE) or category B (more than 3.0 FTE).

*Next Step:* “Non-A Non-B” should confirm that they are not in fact eligible for a PRA/cap reset.

Table 4: **Neither Category A nor Category B**

CCN	Name	County	PRA?	Max PRA
150025	WELBORN BAPTIST HOSPITAL	City: EVANSVILLE	*	23775
150014	WINONA MEMORIAL HOSPITAL	City: INDIANAPOLIS	*	66971
150029	ST JOSEPH REGIONAL MEDICAL CENTER MISHAW	City: MISHAWAKA	*	91708
150099	ST MARY COMMUNITY HOSPITAL	City: SOUTH BEND	*	23540
150021	PARKVIEW REGIONAL MEDICAL CENTER	ALLEN	*	113028
150017	LUTHERAN HOSPITAL OF INDIANA	ALLEN	*	106871
150047	ST JOSEPH HOSPITAL	ALLEN	*	104351
150009	CLARK MEMORIAL HOSPITAL	CLARK	*	103258
150089	INDIANA UNIVERSITY HEALTH BALL MEMORIAL	DELAWARE	*	106141
150115	MEMORIAL HOSPITAL AND HEALTH CARE CENTER	DUBOIS	*	85000
154019	MADISON STATE HOSPITAL	JEFFERSON	*	0
150042	GOOD SAMARITAN HOSPITAL	KNOX	*	106855
150090	FRANCISCAN HEALTH DYER	LAKE	*	90011
150034	ST MARY MEDICAL CENTER INC	LAKE	*	69504
150002	METHODIST HOSPITALS INC	LAKE	*	88050
150004	FRANCISCAN HEALTH HAMMOND	LAKE	*	92700
150084	ASCENSION ST VINCENT HOSPITAL	MARION	*	88544
150024	ESKENAZI HEALTH	MARION	*	102136
150128	COMMUNITY HOSPITAL SOUTH, INC.	MARION	*	92654
150074	COMMUNITY HOSPITAL EAST	MARION	*	88687
154008	NEURODIAGNOSTIC INSTITUTE	MARION	*	67941
150129	COMMUNITY WESTVIEW HOSPITAL	MARION	*	81768
150033	FRANCISCAN ST FRANCIS HEALTH - BEECH GRO	MARION	*	109957
150056	INDIANA UNIVERSITY HEALTH	MARION	*	93311
150012	SAINT JOSEPH REGIONAL MEDICAL CENTER	SAINT JOSEPH		135449
150058	MEMORIAL HOSPITAL OF SOUTH BEND	ST. JOSEPH		120400
150100	ASCENSION ST VINCENT EVANSVILLE	VANDERBURGH		115539
150082	DEACONESS HOSPITAL INC	VANDERBURGH		134219
150023	UNION HOSPITAL INC	VIGO		131275

An asterisk in the PRA? column denotes that the maximum PRA paid by the hospital is less than benchmark PRA for the region.

### Additional Resources:

- **Rural GME HCRIS Data Tool:** Tool used to determine whether a hospital potentially qualifies for a PRA reset.
- **CMS Provider Number Lookup:** Tool used to determine your hospital provider number. You can also find your provider number using the Rural GME HCRIS Data Tool in the state list.
- **Impact of CMS Rule Changes on Rural GME: A Deeper Dive into Section 131:** RRPD-TAC webinar on Section 131.
- **CMS Guidance on Section 131:** FAQ published by CMS on hospitals eligible to reset PRA/Cap.
- **How to contact a Medicare Administrative Contractor (MAC):** CMS website with MAC contact information.

- **The FY22 IPPS Final Rule**, beginning page 73416, contains the formal regulations.

**Acknowledgement**

Disclaimer: The grant program is supported by the Health Resources and Services Administration of the U.S. Department of Health and Human Services under cooperative agreement #UK6RH32513. The content does not necessarily represent the official views of, nor an endorsement, by HRSA, HHS, or the U.S. Government.