

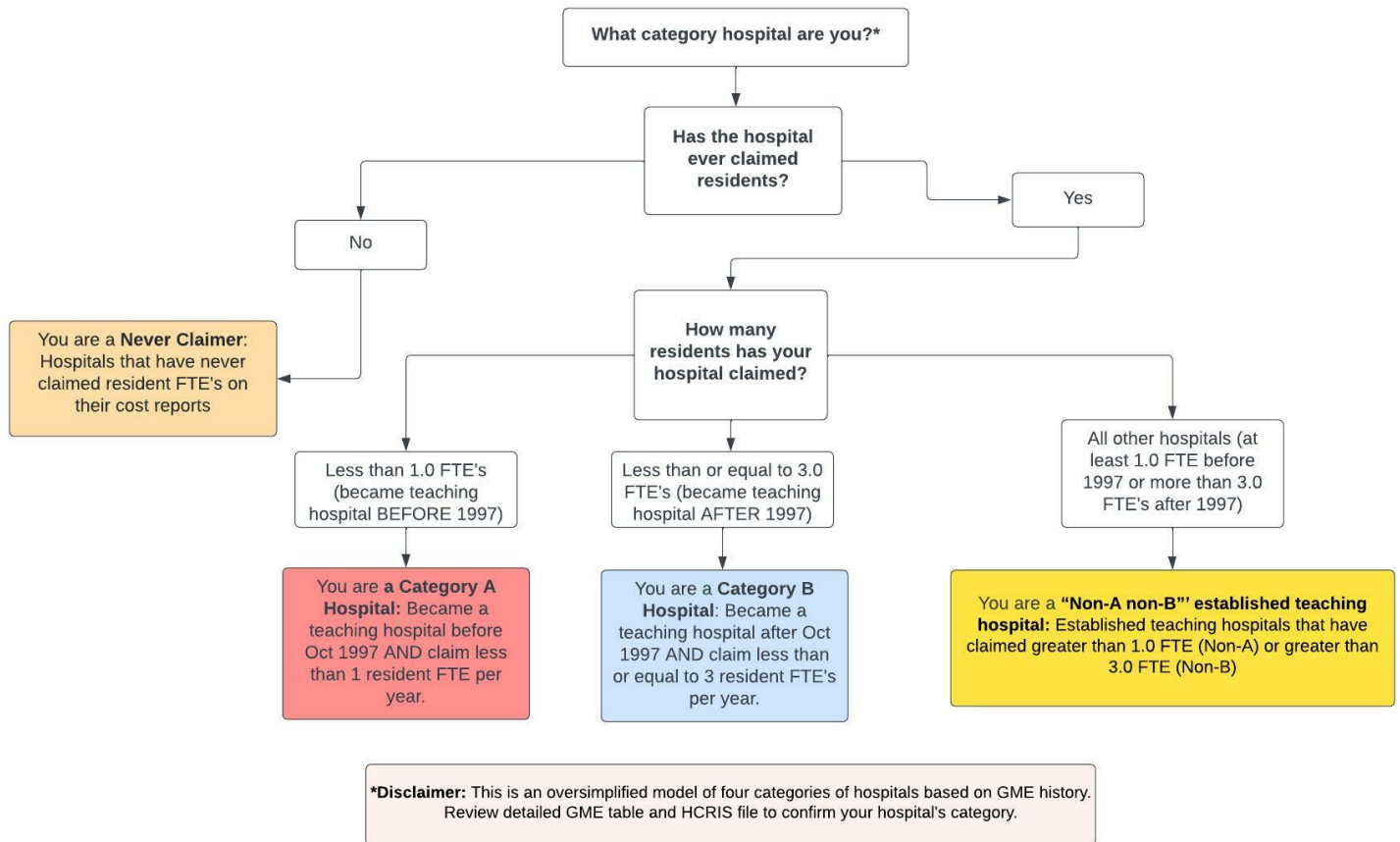
Section 131 GME Tables for Florida

This report classifies each hospital in the state into four groups based on data provided by the Centers for Medicare & Medicaid Services to aid in determining a hospital's eligibility to revise certain GME parameters under Section 131 of the CAA. For more details, visit the CMS website here. Classifications were prepared by staff of the Rural Residency Planning and Development (RRPD) and Teaching Health Center Planning and Development (THCPD) Technical Assistance Centers using data provided by CMS; hospitals are encouraged to confirm all data presented. The tables below are presented as a screening, are not definitive, and may differ from the classifications determined by CMS, the MAC, or other regulatory bodies. Further information, including data, presentations, and tools are available at RuralGME.org

Overview

Hospitals — **with the exception of Critical Access Hospitals** – are classified into four categories based on their historical GME funding and expense. **Category A** and **Category B** Hospitals first claimed a few residents. Generally speaking, a Category A hospital first claimed fewer than 1.0 residents prior to October 1, 1997; a Category B hospital first claimed no more than 3.0 residents on or after October 1, 1997. **Never Claimer** hospitals have not claimed GME on a cost report since 1996. **All other hospitals** meet none of the three categories – we call these “Non-A Non-B Hospitals.” Note that **Critical Access Hospitals** are paid for GME by an entirely different mechanism and are omitted from all lists below; information about this is available at RuralGME.org. The following figure presents an oversimplified, high-level overview.

Overview of Categorization Process



We recommend State Offices of Rural Health encourage **Category A and Category B** hospitals to carefully review their categorization using the Rural GME HCRIS Data Tool, **Never Claimers** to verify that they indeed have not claimed GME, and **Non-A and Non-B Hospitals** to confirm that they do not meet the qualifications for Category A or Category B.

Further details for each category are provided below. Note that hospital names are truncated to 40 characters. An asterisk in the “PRA?” column denotes that the maximum PRA paid by the hospital is less than benchmark PRA for the region. Each table is sorted by the county of the hospital; for hospitals that could not be assigned to a county, the city of the mailing address is provided.

For All Hospital Types: If you check the HCRIS data and believe it is inaccurate then you must electronically submit complete and unambiguous documentation to your MAC **no later than July 1, 2022** contesting the HCRIS data.

1 Category A Hospitals

Category A: Hospitals that became teaching hospitals (set PRA and cap) before October 1997 where that PRA and cap (either or both of DGME and IME) were set based on an FTE of less than 1.0.

- Category A hospitals may be eligible to *reset their PRA* when they train 1.0 or more FTEs from either existing or new programs in the earliest cost reporting period beginning on or after December 27, 2020 and before December 27, 2025.
- Category A Hospitals may be eligible to *reset their resident cap* if they start a new residency program training at least 1.0 FTEs between December 27, 2020 and before December 27, 2025.

Next Step: Category A Hospitals should confirm the accuracy of their PRA/CAP and then may contact their MAC to request a PRA reset and/or resident cap reset before December 27, 2025.

Table 1: Category A

CCN	Name	County	PRA?	Max PRA
100189	NORTHWEST MEDICAL CENTER	City: MARGATE	*	92805
100172	SOUTH BEACH COMMUNITY HOSPITAL	City: MIAMI BEACH	*	79795
100236	FAWCETT MEMORIAL HOSPITAL	CHARLOTTE	*	94533
100179	MEMORIAL HOSPITAL JACKSONVILLE	DUVAL	*	92805
100154	SOUTH MIAMI HOSPITAL	MIAMI-DADE	*	96452

An asterisk in the PRA? column denotes that the maximum PRA paid by the hospital is less than benchmark PRA for the region.

2 Category B Hospitals

Category B: Hospitals that became teaching hospitals (set PRA and cap) after October 1997 through January 2021 where that PRA and cap (either or both of DGME and IME) were set based on an FTE of less than 3.0.

- Category B hospitals may be eligible to *reset their PRA* when they train 3.0 or more FTEs from either existing or new programs in the earliest cost reporting period beginning on or after December 27, 2020 and before December 27, 2025.
- Category B Hospitals may be eligible to *reset their resident cap* if they start a new residency program training at least 3.0 FTEs between December 27, 2020 and before December 27, 2025.

Next Step: Category B Hospitals should confirm the accuracy of their PRA/CAP and then may contact their MAC to request a PRA reset and/or resident cap reset before December 27, 2025.

Table 2: Category B

CCN	Name	County	PRA?	Max PRA
100269	PALMS WEST HOSPITAL	City: LOXAHATCHEE	*	99952
100126	PALMS OF PASADENA HOSPITAL	City: SAINT PETERSBURG	*	0
100224	UNIVERSITY HOSPITAL AND MEDICAL CENTER	City: TAMARAC	*	100469
104007	NORTHEAST FLORIDA STATE HOSPITAL	BAKER	*	90033
100281	MEMORIAL HOSPITAL WEST	BROWARD	*	124118
100285	MEMORIAL HOSPITAL MIRAMAR	BROWARD	*	86033
100230	MEMORIAL HOSPITAL PEMBROKE	BROWARD	*	86033
100228	WESTSIDE REGIONAL MEDICAL CENTER	BROWARD	*	100170
100061	MERCY HOSPITAL INC	DADE	*	89948
100209	HCA FLORIDA KENDALL HOSPITAL	DADE	*	104536
100173	ADVENTHEALTH TAMPA	HILLSBOROUGH	*	96936
100075	ST JOSEPHS HOSPITAL	HILLSBOROUGH	*	78021
100212	MARION COMMUNITY HOSPITAL	MARION	*	99503
100296	DOCTORS HOSPITAL	MIAMI-DADE	*	104956
100053	STEWART HIALEAH HOSPITAL	MIAMI-DADE	*	0
100029	NORTH SHORE MEDICAL CENTER	MIAMI-DADE	*	0
100314	WEST KENDALL BAPTIST HOSPITAL	MIAMI-DADE	*	107642
103304	NEMOURS CHILDREN'S HOSPITAL	ORANGE	*	122414
100130	LAKESIDE MEDICAL CENTER	PALM BEACH	*	99324
100288	ST MARY'S MEDICAL CENTER	PALM BEACH	*	98990
100268	WEST BOCA MEDICAL CENTER	PALM BEACH	*	99524
100002	BETHESDA HOSPITAL INC	PALM BEACH	*	92502
100258	DELRAY MEDICAL CENTER	PALM BEACH	*	98803
100080	JFK MEDICAL CENTER	PALM BEACH	*	99911
100127	MORTON PLANT HOSPITAL	PINELLAS	*	93680
100157	LAKELAND REGIONAL MEDICAL CENTER	POLK	*	76581
100052	WINTER HAVEN HOSPITAL	POLK	*	0
100246	LAWNWOOD REGIONAL MEDICAL CENTER & HEART	ST. LUCIE	*	0
100260	ST LUCIE MEDICAL CENTER	ST. LUCIE	*	99052

An asterisk in the PRA? column denotes that the maximum PRA paid by the hospital is less than benchmark PRA for the region.

3 Never Claimer Hospitals

Never Claimers: Hospitals that have never claimed residents for GME payment on any cost report. This includes hospitals that have had documented resident rotators in the past that were not claimed to establish a Per Resident Amount (PRA), and also hospitals that have never trained residents. For those hospitals that *have* trained residents in the past and never reported them, there is a risk of inadvertently setting a new PRA of zero and of establishing a cap in the future if 1.0 or more FTE of residents are being trained in a fiscal cost report year after 12/27/2020. In some circumstances the data may be incorrect and should be contested by contacting the MAC.

- Check to confirm that you do not have a claimed PRA/cap for all years.
- If you are not training greater than 1.0 FTEs right now, you do not need to contact your MAC until you begin training 1.0 or more FTEs.

Next Step: Any hospital that is in this category of “Never Claimer” that has trained 1.0 or more FTE in any fiscal cost report year following 12/27/20 MUST begin claiming those resident FTE as of that cost report year. The documentation maintained by the hospital regarding the costs it incurred in training those FTE will establish the PRA for that hospital, and may or may not start the cap-setting period. Note that such a hospital that reports no costs is at high risk of establishing a PRA of ZERO, that will remain established into the future.

Table 3: Never Claimers

CCN	Name	County
101992	THE SUMMIT	City: APOPKA
100045	ADVENTHEALTH DELAND	City: DELAND
100267	ENGLEWOOD COMMUNITY HOSPITAL	City: ENGLEWOOD
101993	DAYSTAR, INC	City: FORT LAUDERDALE
100223	FORT WALTON BEACH MEDICAL CENTER	City: FORT WALTON BEACH
104032	GULF COAST TREATMENT CENTER	City: FORT WALTON BEACH
104049	SOUTHERN WINDS	City: HIALEAH
103039	BROOKS REHABILITATION HOSPITAL UNIVERSIT	City: JACKSONVILLE
100253	JUPITER MEDICAL CENTER	City: JUPITER
100320	POINCIANA MEDICAL CENTER	City: KISSIMMEE
102032	LANDMARK HOSPITAL OF SOUTHWEST FLORIDA	City: LEHIGH ACRES
100328	MIAMI MEDICAL CENTER, THE	City: MIAMI
100076	METROPOLITAN HOSPITAL OF MIAMI	City: MIAMI
100327	LANDMARK HOSPITAL OF SOUTHWEST FLORIDA	City: NAPLES
100242	GULF COAST REGIONAL MEDICAL CENTER	City: PANAMA CITY
100026	ASCENSION SACRED HEART BAY	City: PANAMA CITY
100049	HIGHLANDS REGIONAL MEDICAL CENTER	City: SEBRING
103303	SHRINERS HOSPITALS FOR CHILDREN-TAMPA	City: TAMPA
100319	ADVENTHEALTH WESLEY CHAPEL	City: WESLEY CHAPEL
104008	SUNVIEW MEDICAL CENTER	City: WEST PALM BEACH
103046	UF HEALTH REHAB HOSPITAL	ALACHUA
102022	SELECT SPECIALTY HOSPITAL GAINESVILLE IN	ALACHUA
100134	ED FRASER MEMORIAL HOSPITAL	BAKER
104073	EMERALD COAST BEHAVIORAL HOSPITAL	BAY
103040	ENCOMPASS HEALTH REHABILITATION HOSPITAL	BAY
102017	SELECT SPECIALTY HOSPITAL - PANAMA CITY	BAY COUNTY
103034	SEA PINES REHAB HOSP AFFILIATE OF ENCOMP	BREVARD
100028	PARRISH MEDICAL CENTER	BREVARD
100177	CAPE CANAVERAL HOSPITAL	BREVARD
104024	CIRCLES OF CARE, INC	BREVARD
100019	HOLMES REGIONAL MEDICAL CENTER	BREVARD
102027	KINDRED HOSPITAL MELBOURNE	BREVARD
100315	VIERA HOSPITAL	BREVARD
104082	PALM POINT BEHAVIORAL HEALTH	BREVARD
100291	MELBOURNE REGIONAL MEDICAL CENTER	BREVARD
100092	STEWART ROCKLEDGE HOSPITAL	BREVARD
100316	PALM BAY HOSPITAL	BREVARD
102010	KINDRED HOSPITAL-SOUTH FLORIDA-FT LAUDER	BROWARD
103027	ST ANTHONY'S REHABILITATION HOSPITAL	BROWARD
103028	ENCOMPASS HEALTH REHAB HOSPITAL OF SUNRI	BROWARD
104015	HOLLYWOOD PAVILION	BROWARD
100086	BROWARD HEALTH NORTH	BROWARD
100200	BROWARD HEALTH IMPERIAL POINT	BROWARD
104065	ATLANTIC SHORES HOSPITAL	BROWARD
104079	LARKIN COMMUNITY HOSPITAL BEHAVIORAL HEA	BROWARD
104026	FORT LAUDERDALE BEHAVIORAL HEALTH CENTER	BROWARD
100077	BAYFRONT HEALTH PORT CHARLOTTE	CHARLOTTE
100047	BAYFRONT HEALTH PUNTA GORDA	CHARLOTTE
100249	BAYFRONT HEALTH SEVEN RIVERS	CITRUS
102015	KINDRED HOSPITAL-NORTH FLORIDA	CLAY
100286	PHYSICIANS REGIONAL MEDICAL CENTER - PIN	COLLIER
104063	WILLOUGH AT NAPLES, THE	COLLIER

Continued on next page

Table 3 – Continued from previous page

CCN	Name	County
100156	LAKE CITY MEDICAL CENTER	COLUMBIA
100102	SHANDS LAKE SHORE REGIONAL MEDICAL CENTE	COLUMBIA
104001	SOUTH FLORIDA STATE HOSPITAL	DADE
100175	DESOTO MEMORIAL HOSPITAL	DE SOTO
102012	CURAHEALTH JACKSONVILLE LLC	DUVAL
100117	BAPTIST MEDICAL CENTER BEACHES	DUVAL
100321	ASCENSION ST VINCENT’S CLAY COUNTY	DUVAL
100307	ASCENSION ST VINCENT’S SOUTHSIDE	DUVAL
100231	WEST FLORIDA HOSPITAL	ESCAMBIA
100093	BAPTIST HOSPITAL	ESCAMBIA
102024	SELECT SPECIALTY HOSPITAL PENSACOLA	ESCAMBIA
100118	FLORIDA HOSPITAL FLAGLER	FLAGLER
100298	FLORIDA STATE HOSPITAL UNIT 31 MED	GADSDEN
100313	ASCENSION SACRED HEART GULF	GULF
104057	SPRINGBROOK HOSPITAL	HERNANDO
100071	BAYFRONT HEALTH BROOKSVILLE	HERNANDO
103042	ENCOMPASS HEALTH REHAB HOSPITAL OF SPRIN	HERNANDO
100109	ADVENTHEALTH SEBRING	HIGHLANDS
102013	KINDRED HOSPITAL-CENTRAL TAMPA	HILLSBOROUGH
100259	SOUTH BAY HOSPITAL	HILLSBOROUGH
100132	SOUTH FLORIDA BAPTIST HOSPITAL	HILLSBOROUGH
100255	TAMPA COMMUNITY HOSPITAL	HILLSBOROUGH
102009	KINDRED HOSPITAL-BAY AREA-TAMPA	HILLSBOROUGH
100206	MEMORIAL HOSPITAL OF TAMPA	HILLSBOURGH
100105	CLEVELAND CLINIC INDIAN RIVER HOSPITAL	INDIAN RIVER
100217	SEBASTIAN RIVER MEDICAL CENTER	INDIAN RIVER
103032	ENCOMPASS HEALTH REHAB HOSPITAL OF TREAS	INDIAN RIVER
100142	JACKSON HOSPITAL	JACKSON
104069	WEKIVA SPRINGS	JACKSONVILLE
104016	RIVER POINT BEHAVIORAL HEALTH	JACKSONVILLE
100084	UF HEALTH LEESBURG HOSPITAL	LAKE
104018	LIFESTREAM BEHAVIORAL CENTER	LAKE
100057	ADVENTHEALTH WATERMAN	LAKE
100051	ORLANDO HEALTH SOUTH LAKE HOSPITAL	LAKE
100244	CAPE CORAL HOSPITAL	LEE
102029	SELECT SPECIALTY HOSPITAL-FORT MYERS	LEE
104074	PARK ROYAL HOSPITAL	LEE
100107	LEHIGH REGIONAL MEDICAL CENTER	LEE
100220	GULF COAST MEDICAL CENTER LEE HEALTH	LEE
100324	PROMISE HOSPITAL OF FORT MYERS	LEE COUNTY
103033	ENCOMPASS HEALTH REHABILITATION HOSPITAL	LEON
100254	CAPITAL REGIONAL MEDICAL CENTER	LEON
104059	EASTSIDE PSYCHIATRIC HOSPITAL	LEON
102020	SELECT SPECIALTY HOSPITAL - TALLAHASSEE	LEON
100139	TRI COUNTY HOSPITAL - WILLISTON	LEVY
100322	REGIONAL GENERAL HOSPITAL WILLISTON	LEVY
100299	LAKWOOD RANCH MEDICAL CENTER	MANATEE
104078	SUNCOAST BEHAVIORAL HEALTH CENTER	MANATEE
104040	CENTERSTONE OF FLORIDA	MANATEE
102019	KINDRED HOSPITAL OCALA	MARION
103043	ENCOMPASS HEALTH REHAB HOSPITAL OF OCALA	MARION
104068	CENTERS INC, THE	MARION
100044	CLEVELAND CLINIC MARTIN NORTH HOSPITAL	MARTIN
104080	CORAL SHORES BEHAVIORAL HEALTH	MARTIN

Continued on next page

Table 3 – Continued from previous page

CCN	Name	County
103044	ENCOMPASS HEALTH REHAB HOSPITAL AN AFFIL	MARTIN
103036	WEST GABLES REHABILITATION HOSPITAL	MIAMI-DADE
100008	BAPTIST HOSPITAL OF MIAMI	MIAMI-DADE
103026	ST CATHERINE'S REHABILITATION HOSPITAL	MIAMI-DADE
100326	PROMISE HOSPITAL OF MIAMI	MIAMI-DADE
100125	HOMESTEAD HOSPITAL	MIAMI-DADE
102001	SELECT SPECIALTY HOSPITAL-MIAMI	MIAMI-DADE
103038	ENCOMPASS HEALTH REHABILITATION HOSPITAL	MIAMI-DADE
102016	SISTER EMMANUEL HOSPITAL	MIAMI-DADE
102031	SELECT SPECIALTY HOSPITAL-MIAMI LAKES	MIAMI-DADE
100277	DOUGLAS GARDENS HOSPITAL	MIAMI-DADE
100150	LOWER KEYS MEDICAL CENTER	MONROE
100140	BAPTIST MEDICAL CENTER - NASSAU	NASSAU
104071	THE VINES HOSPITAL	OCALA
100122	NORTH OKALOOSA MEDICAL CENTER	OKALOOSA
100054	TWIN CITIES HOSPITAL	OKALOOSA
100252	RAULERSON HOSPITAL	OKEECHOBEE
104076	UNIVERSITY BEHAVIORAL CENTER	ORANGE
104072	CENTRAL FLORIDA BEHAVIORAL HOSPITAL	ORANGE
100329	OVIEDO MEDICAL CENTER	ORANGE
100030	ORLANDO HEALTH-HEALTH CENTRAL HOSPITAL	ORANGE
102003	SELECT SPECIALTY HOSPITAL - ORLANDO	ORANGE
104067	ASPIRE HEALTH PARTNERS	ORANGE
100302	ST CLOUD REGIONAL MEDICAL CENTER	OSCEOLA
104081	BLACKBERRY CENTER - OGLETHORPE OF ORLAND	OSCEOLA
100287	GOOD SAMARITAN MEDICAL CENTER	PALM BEACH
102023	SELECT SPECIALTY HOSPITAL-PALM BEACH	PALM BEACH
102025	KINDRED HOSPITAL THE PALM BEACHES	PALM BEACH
100176	PALM BEACH GARDENS MEDICAL CENTER	PALM BEACH
100046	FLORIDA HOSPITAL ZEPHYRHILLS	PASCO
102026	ADVENTHEALTH CONNERTON	PASCO
104075	NORTH TAMPA BEHAVIORAL HEALTH	PASCO
100063	MORTON PLANT NORTH BAY HOSPITAL	PASCO
100211	ADVENTHEALTH DADE CITY	PASCO
100043	MEASE DUNEDIN HOSPITAL	PINELLAS
102021	BAYCARE ALLIANT HOSPITAL	PINELLAS
104017	WINDMOOR HEALTHCARE OF CLEARWATER	PINELLAS
100067	ST ANTHONYS HOSPITAL	PINELLAS
100265	MORTON PLANT MEASE HEALTHCARE COUNTRYSID	PINELLAS
103037	ENCOMPASS HEALTH REHABILITATION HOSPITAL	PINELLAS
100055	ADVENTHEALTH NORTH PINELLAS	PINELLAS
100239	EDWARD WHITE HOSPITAL	PINELLAS
100099	ADVENTHEALTH LAKE WALES	POLK
100121	BARTOW REGIONAL MEDICAL CENTER	POLK
100137	ADVENTHEALTH HEART OF FLORIDA	POLK
100232	PUTNAM COMMUNITY MEDICAL CENTER	PUTNAM
100048	JAY HOSPITAL	SANTA ROSA
100124	SANTA ROSA MEDICAL CENTER	SANTA ROSA
104027	WEST FLORIDA COMMUNITY CARE CENTER	SANTA ROSA
100266	GULF BREEZE HOSPITAL	SANTA ROSA
100166	DOCTORS HOSPITAL OF SARASOTA	SARASOTA
103031	ENCOMPASS HEALTH REHAB HOSPITAL OF SARAS	SARASOTA
100070	VENICE REGIONAL BAYFRONT HEALTH	SARASOTA
102018	PAM SPECIALTY HOSPITAL OF SARASOTA	SARASOTA

Continued on next page

Table 3 – Continued from previous page

CCN	Name	County
100161	CENTRAL FLORIDA REGIONAL HOSPITAL	SEMINOLE
103045	ENCOMPASS HEALTH REHABILITATION HOSPITAL	SEMINOLE
100090	FLAGLER HOSPITAL	ST JOHNS
104070	PORT ST LUCIE HOSPITAL	ST. LUCIE
100317	PROMISE HOSPITAL OF FLORIDA AT THE VILLA	SUMTER
100290	VILLAGES REGIONAL HOSPITAL, THE	SUMTER
102028	SELECT SPECIALTY HOSPITAL - THE VILLAGES	SUMTER
100106	DOCTORS MEMORIAL HOSPITAL INC	TAYLOR
102030	SELECT SPECIALTY HOSPITAL DAYTONA BEACH	VOLUSIA
100325	SELECT SPECIALTY HOSPITAL-DAYTONA BEACH	VOLUSIA
100072	ADVENTHEALTH FISH MEMORIAL	VOLUSIA
100330	HALIFAX HEALTH /UF HEALTH MEDICAL CENTER	VOLUSIA
100014	ADVENTHEALTH NEW SMYRNA BEACH	VOLUSIA
100081	HEALTHMARK REGIONAL MEDICAL CENTER	WALTON
100292	SACRED HEART HOSPITAL ON THE EMERALD COA	WALTON

4 All Other Hospitals

“Non-A Non-B” established teaching hospitals: Hospitals that don’t appear to qualify for a PRA/cap reset because they have claimed FTE greater than the eligibility criteria for category A (at least 1.0 FTE) or category B (more than 3.0 FTE).

Next Step: “Non-A Non-B” should confirm that they are not in fact eligible for a PRA/cap reset.

Table 4: Neither Category A nor Category B

CCN	Name	County	PRA?	Max PRA
100020	HEALTHSOUTH DOCTORS HOSPITAL	City: CORAL GABLES	*	74262
100204	NORTH FLORIDA REGIONAL MEDICAL CENTER	City: GAINESVILLE	*	100156
100082	ALACHUA GENERAL HOSPITAL	City: GAINESVILLE	*	24408
100225	HOLLYWOOD MEDICAL CENTER	City: HOLLYWOOD	*	78542
100170	METHODIST MEDICAL CENTE	City: JACKSONVILLE	*	63800
100015	SUN COAST HOSPITAL	City: LARGO	*	77153
100284	KERALTY HOSPITAL	City: MIAMI		109980
100165	SOUTHERN WINDS	City: MIAMI	*	69688
100060	MT SINAI MED CTR & MIAMI HEART INSTITU	City: MIAMI BEACH	*	58527
100114	PARKWAY REGIONAL MEDICAL CENTER	City: NORTH MIAMI BEACH	*	82375
100007	ADVENTHEALTH ORLANDO	City: ORLANDO		149360
100085	FLORIDA MEDICAL CENTER SOUTH	City: PLANTATION	*	79157
100235	UNIVERSITY GENERAL HOSPITAL	City: SEMINOLE	*	49871
100069	FLORIDA HOSPITAL CARROLLWOOD	City: TAMPA	*	92512
100056	CLEVELAND CLINIC HOSPITAL	City: WESTON	*	76043
100113	UF HEALTH SHANDS HOSPITAL	ALACHUA		125179
100167	PLANTATION GENERAL HOSPITAL	BROWARD	*	93835
100073	HOLY CROSS HOSPITAL	BROWARD	*	102743
100289	CLEVELAND CLINIC HOSPITAL	BROWARD	*	104086
100276	BROWARD HEALTH CORAL SPRINGS	BROWARD		127765
100039	BROWARD HEALTH MEDICAL CENTER	BROWARD	*	103122
100038	MEMORIAL REGIONAL HOSPITAL	BROWARD	*	93123
100023	CITRUS MEMORIAL HOSPITAL	CITRUS	*	100137

Continued on next page

Table 4 – Continued from previous page

CCN	Name	County	Review PRA?	Max PRA
100226	ORANGE PARK MEDICAL CENTER	CLAY	*	100515
100018	NAPLES COMMUNITY HOSPITAL	COLLIER	*	99053
100022	JACKSON HEALTH SYSTEM	DADE	*	103693
100009	UMHC-UHEALTH TOWER	DADE	*	99307
100151	MAYO CLINIC FLORIDA	DUVAL	*	102838
100088	BAPTIST HEALTH MEDICAL CENTER - JACKSONV	DUVAL	*	92502
100040	ASCENSION ST VINCENT'S RIVERSIDE	DUVAL		151453
100001	SHANDS JACKSONVILLE	DUVAL	*	99053
100025	SACRED HEART HOSPITAL	ESCAMBIA	*	93702
100264	OAK HILL HOSPITAL	HERNANDO	*	94012
100271	H LEE MOFFITT CANCER CENTER & RESEARCH I	HILLSBOROUGH	*	94421
100243	BRANDON REGIONAL HOSPITAL	HILLSBOROUGH	*	93600
100128	TAMPA GENERAL HOSPITAL	HILLSBOROUGH	*	92502
100012	LEE MEMORIAL HOSPITAL	LEE	*	99137
100135	TALLAHASSEE MEMORIAL HEALTHCARE	LEON	*	93836
100035	MANATEE MEMORIAL HOSPITAL	MANATEE	*	102350
100213	BLAKE MEDICAL CENTER	MANATEE	*	93414
100062	ADVENTHEALTH OCALA	MARION	*	62513
100034	MOUNT SINAI MEDICAL CENTER	MIAMI	*	104536
100183	STEWART CORAL GABLES HOSPITAL	MIAMI-DADE	*	56253
100079	UNIV OF MIAMI HOSPITAL AND CLINICS-SYLVE	MIAMI-DADE	*	104426
100240	UMHC - BASCOM PALMER EYE INSTITUTE	MIAMI-DADE	*	100855
100050	LARKIN COMMUNITY HOSPITAL PALM SPRINGS C	MIAMI-DADE	*	104536
100131	AVENTURA HOSPITAL AND MEDICAL CENTER	MIAMI-DADE	*	104536
103301	NICKLAUS CHILDREN'S HOSPITAL	MIAMI-DADE		114665
100187	STEWART PALMETTO GENERAL HOSPITAL	MIAMI-DADE	*	104536
100181	LARKIN COMMUNITY HOSPITAL	MIAMI-DADE	*	104536
100006	ORLANDO HEALTH	ORANGE		108908
100110	OSCEOLA REGIONAL MEDICAL CENTER	OSCEOLA	*	99520
100234	WEST PALM HOSPITAL	PALM BEACH	*	92089
100168	BOCA RATON REGIONAL HOSPITAL	PALM BEACH	*	102313
100275	WELLINGTON REGIONAL MEDICAL CENTER	PALM BEACH	*	98955
102000	A G HOLLEY STATE HOSPITAL	PALM BEACH	*	0
100191	MEDICAL CENTER OF TRINITY	PASCO	*	92769
100256	REGIONAL MEDICAL CENTER BAYONET POINT	PASCO	*	94012
100238	NORTHSIDE HOSPITAL	PINELLAS	*	92502
100248	LARGO MEDICAL CENTER	PINELLAS	*	94222
103300	JOHNS HOPKINS ALL CHILDREN'S HOSPITAL	PINELLAS	*	94284
100180	ST PETERSBURG GENERAL HOSPITAL	PINELLAS	*	93387
100032	BAYFRONT HEALTH ST PETERSBURG	PINELLAS	*	99324
100087	SARASOTA MEMORIAL HOSPITAL	SARASOTA	*	99053
100068	ADVENTHEALTH DAYTONA BEACH	VOLUSIA	*	67966
100017	HALIFAX HEALTH MEDICAL CENTER	VOLUSIA		148375

An asterisk in the PRA? column denotes that the maximum PRA paid by the hospital is less than benchmark PRA for the region.

Additional Resources:

- **Rural GME HCRIS Data Tool:** Tool used to determine whether a hospital potentially qualifies for a PRA reset.
- **CMS Provider Number Lookup:** Tool used to determine your hospital provider number. You can also find your provider number using the Rural GME HCRIS Data Tool in the state list.
- **Impact of CMS Rule Changes on Rural GME: A Deeper Dive into Section 131:** RRPD-TAC webinar on Section 131.

- **CMS Guidance on Section 131:** FAQ published by CMS on hospitals eligible to reset PRA/Cap.
- **How to contact a Medicare Administrative Contractor (MAC):** CMS website with MAC contact information.
- **The FY22 IPPS Final Rule,** beginning page 73416, contains the formal regulations.

Acknowledgement

Disclaimer: The grant program is supported by the Health Resources and Services Administration of the U.S. Department of Health and Human Services under cooperative agreement #UK6RH32513. The content does not necessarily represent the official views of, nor an endorsement, by HRSA, HHS, or the U.S. Government.