

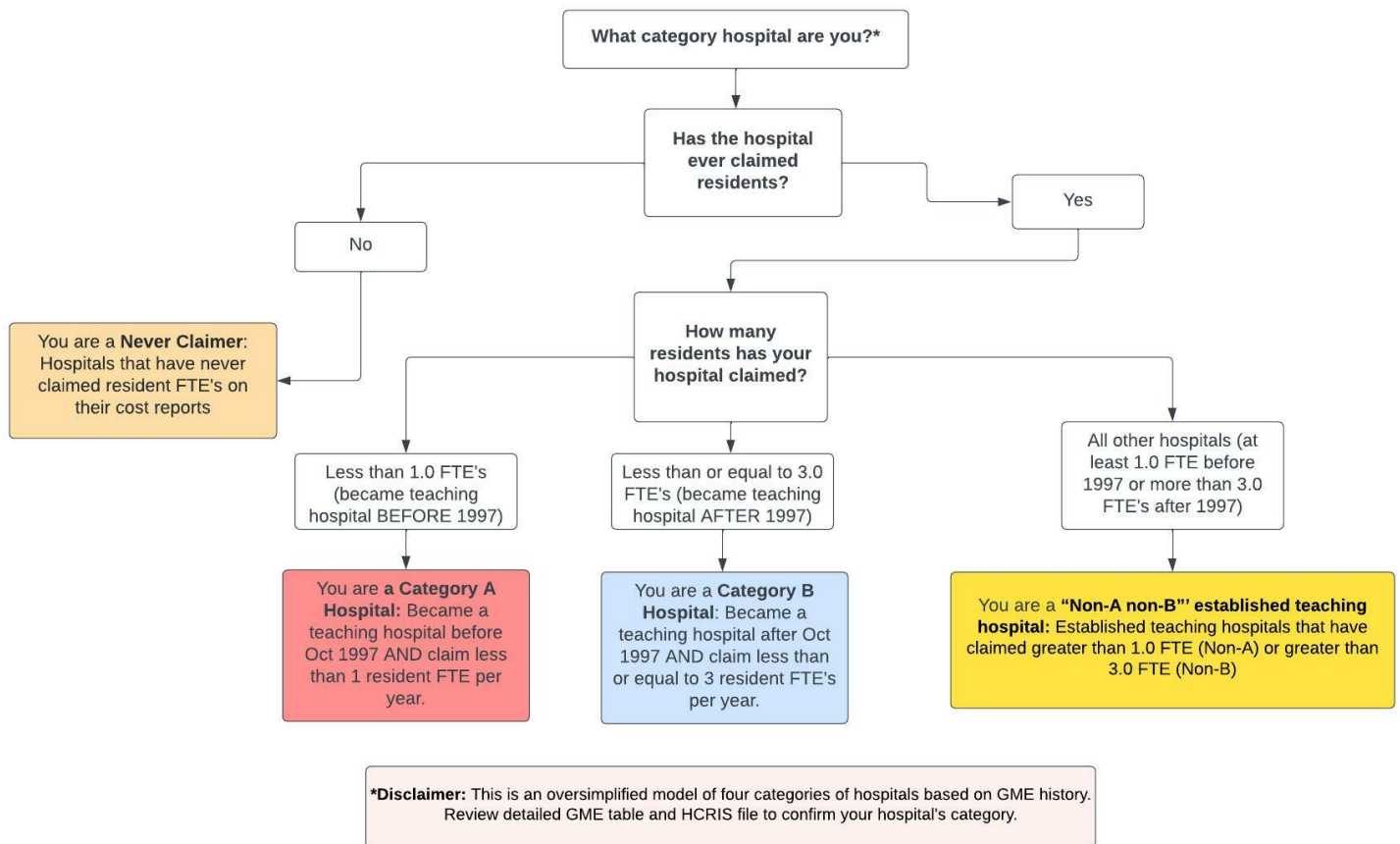
Section 131 GME Tables for Arizona

This report classifies each hospital in the state into four groups based on data provided by the Centers for Medicare & Medicaid Services to aid in determining a hospital's eligibility to revise certain GME parameters under Section 131 of the CAA. For more details, visit the CMS website here. Classifications were prepared by staff of the Rural Residency Planning and Development (RRPD) and Teaching Health Center Planning and Development (THCPD) Technical Assistance Centers using data provided by CMS; hospitals are encouraged to confirm all data presented. The tables below are presented as a screening, are not definitive, and may differ from the classifications determined by CMS, the MAC, or other regulatory bodies. Further information, including data, presentations, and tools are available at RuralGME.org

Overview

Hospitals — **with the exception of Critical Access Hospitals** – are classified into four categories based on their historical GME funding and expense. **Category A** and **Category B** Hospitals first claimed a few residents. Generally speaking, a Category A hospital first claimed fewer than 1.0 residents prior to October 1, 1997; a Category B hospital first claimed no more than 3.0 residents on or after October 1, 1997. **Never Claimer** hospitals have not claimed GME on a cost report since 1996. **All other hospitals** meet none of the three categories – we call these “Non-A Non-B Hospitals.” Note that **Critical Access Hospitals** are paid for GME by an entirely different mechanism and are omitted from all lists below; information about this is available at RuralGME.org. The following figure presents an oversimplified, high-level overview.

Overview of Categorization Process



We recommend State Offices of Rural Health encourage **Category A and Category B** hospitals to carefully review their categorization using the Rural GME HCRIS Data Tool, **Never Claimers** to verify that they indeed have not claimed GME, and **Non-A and Non-B Hospitals** to confirm that they do not meet the qualifications for Category A or Category B.

Further details for each category are provided below. Note that hospital names are truncated to 40 characters. An asterisk in the “PRA?” column denotes that the maximum PRA paid by the hospital is less than benchmark PRA for the region. Each table is sorted by the county of the hospital; for hospitals that could not be assigned to a county, the city of the mailing address is provided.

For All Hospital Types: If you check the HCRIS data and believe it is inaccurate then you must electronically submit complete and unambiguous documentation to your MAC **no later than July 1, 2022** contesting the HCRIS data.

1 Category A Hospitals

Category A: Hospitals that became teaching hospitals (set PRA and cap) before October 1997 where that PRA and cap (either or both of DGME and IME) were set based on an FTE of less than 1.0.

- Category A hospitals may be eligible to *reset their PRA* when they train 1.0 or more FTEs from either existing or new programs in the earliest cost reporting period beginning on or after December 27, 2020 and before December 27, 2025.
- Category A Hospitals may be eligible to *reset their resident cap* if they start a new residency program training at least 1.0 FTEs between December 27, 2020 and before December 27, 2025.

Next Step: Category A Hospitals should confirm the accuracy of their PRA/CAP and then may contact their MAC to request a PRA reset and/or resident cap reset before December 27, 2025.

Table 1: Category A

CCN	Name	County	PRA?	Max PRA
030092	HONORHEALTH DEER VALLEY MEDICAL CENTER	MARICOPA	*	94035
030061	BANNER BOSWELL MEDICAL CENTER	MARICOPA		143943

An asterisk in the PRA? column denotes that the maximum PRA paid by the hospital is less than benchmark PRA for the region.

2 Category B Hospitals

Category B: Hospitals that became teaching hospitals (set PRA and cap) after October 1997 through January 2021 where that PRA and cap (either or both of DGME and IME) were set based on an FTE of less than 3.0.

- Category B hospitals may be eligible to *reset their PRA* when they train 3.0 or more FTEs from either existing or new programs in the earliest cost reporting period beginning on or after December 27, 2020 and before December 27, 2025.
- Category B Hospitals may be eligible to *reset their resident cap* if they start a new residency program training at least 3.0 FTEs between December 27, 2020 and before December 27, 2025.

Next Step: Category B Hospitals should confirm the accuracy of their PRA/CAP and then may contact their MAC to request a PRA reset and/or resident cap reset before December 27, 2025.

Table 2: Category B

CCN	Name	County	PRA?	Max PRA
030093	BANNER DEL E. WEBB MEDICAL CENTER	MARICOPA		143943
033038	GLOBALREHAB - SCOTTSDALE, LLC	MARICOPA		134999
030013	YUMA REGIONAL MEDICAL CENTER	YUMA	*	96168

An asterisk in the PRA? column denotes that the maximum PRA paid by the hospital is less than benchmark PRA for the region.

3 Never Claimer Hospitals

Never Claimers: Hospitals that have never claimed residents for GME payment on any cost report. This includes hospitals that have had documented resident rotators in the past that were not claimed to establish a Per Resident Amount (PRA), and also hospitals that have never trained residents. For those hospitals that *have* trained residents in the past and never reported them, there is a risk of inadvertently setting a new PRA of zero and of establishing a cap in the future if 1.0 or more FTE of residents are being trained in a fiscal cost report year after 12/27/2020. In some circumstances the data may be incorrect and should be contested by contacting the MAC.

- Check to confirm that you do not have a claimed PRA/cap for all years.
- If you are not training greater than 1.0 FTEs right now, you do not need to contact your MAC until you begin training 1.0 or more FTEs.

Next Step: Any hospital that is in this category of “Never Claimer” that has trained 1.0 or more FTE in any fiscal cost report year following 12/27/20 MUST begin claiming those resident FTE as of that cost report year. The documentation maintained by the hospital regarding the costs it incurred in training those FTE will establish the PRA for that hospital, and may or may not start the cap-setting period. Note that such a hospital that reports no costs is at high risk of establishing a PRA of ZERO, that will remain established into the future.

Table 3: Never Claimers

CCN	Name	County
030016	BANNER CASA GRANDE MEDICAL CENTER	City: CASA GRANDE
030120	GILBERT HOSPITAL	City: GILBERT
033303	HACIENDA CHILDREN’S HOSPITAL, INC.	City: MESA
030115	BANNER ESTRELLA MEDICAL CENTER	City: PHOENIX
033301	LOS NINOS HOSPITAL, INC.	City: PHOENIX
034025	WINDHAVEN PSYCHIATRIC HOSPITAL	City: PRESCOTT VALLEY
030130	BANNER IRONWOOD MEDICAL CENTER	City: QUEEN CREEK
030135	FREEDOM PAIN HOSPITAL	City: SCOTTSDALE
034034	DESTINY SPRINGS HEALTHCARE	City: SURPRISE
033039	COBALT REHABILITATION HOSPITAL IV, LLC	City: SURPRISE
030071	FORT DEFIANCE INDIAN HOSPITAL	APACHE
030073	TUBA CITY REGIONAL HEALTH CARE CORPORATI	COCONINO
034023	GUIDANCE CENTER, THE	COCONINO
033041	REHABILITATION HOSPITAL OF NORTHERN ARIZ	COCONINO
030023	FLAGSTAFF MEDICAL CENTER	COCONINO
030033	BANNER PAYSON MEDICAL CENTER	GILA
030068	MT. GRAHAM REGIONAL MEDICAL CENTER	GRAHAM
030077	SAN CARLOS APACHE HEALTHCARE CORP	GRAHAM
030067	LA PAZ REGIONAL HOSPITAL	LA PAZ

Continued on next page

Table 3 – Continued from previous page

CCN	Name	County
034013	ST. LUKE'S BEHAVIORAL HOSPITAL, LP	MARICOPA
033037	ENCOMPASS HEALTH REHABILITATION HOSPITAL	MARICOPA
033025	ENCOMPASS HEALTH REHAB HOSPITAL OF SCOTT	MARICOPA
034032	COPPER SPRINGS EAST- GILBERT	MARICOPA
030107	ARIZONA SPINE AND JOINT HOSPITAL	MARICOPA
030105	BANNER HEART HOSPITAL	MARICOPA
030065	BANNER DESERT MEDICAL CENTER	MARICOPA
034026	VALLEY HOSPITAL	MARICOPA
030131	O.A.S.I.S. HOSPITAL	MARICOPA
030112	ARIZONA ORTHOPEDIC AND SURGICAL SPECIALT	MARICOPA
034004	BANNER BEHAVIORAL HEALTH HOSPITAL	MARICOPA
032007	ACUITY SPECIALTY HOSPITAL OF ARIZONA AT	MARICOPA
030139	DIGNITY HEALTH ARIZONA GENERAL HOSPITAL	MARICOPA
030088	BANNER BAYWOOD MEDICAL CENTER	MARICOPA
034035	AVENIR BEHAVIORAL HEALTH CENTER	MARICOPA
030122	BANNER GATEWAY MEDICAL CENTER	MARICOPA
032005	SELECT SPECIALTY HOSPITAL ARIZONA	MARICOPA
034021	ARIZONA STATE HOSPITAL	MARICOPA
030078	PHOENIX INDIAN MEDICAL CENTER	MARICOPA
030136	DIGNITY HEALTH - ARIZONA GENERAL HOSPITA	MARICOPA
034029	OASIS BEHAVIORAL HEALTH HOSPITAL	MARICOPA
030138	WESTERN REGIONAL MEDICAL CENTER	MARICOPA
032001	SELECT SPECIALTY HOSPITAL PHOENIX	MARICOPA
034028	AURORA BEHAVIORAL HEALTHCARE-TEMPE	MARICOPA
032006	KPC PROMISE HOSPITAL OF PHOENIX, LLC	MARICOPA
030108	THE CORE INSTITUTE SPECIALTY HOSP	MARICOPA
033032	ENCOMPASS HEALTH VALLEY OF THE SUN REHAB	MARICOPA
034031	QUAIL RUN BEHAVIORAL HEALTH	MARICOPA
032008	ACUITY SPECIALTY HOSPITAL OF ARIZONA AT	MARICOPA
030083	ABRAZO SCOTTSDALE CAMPUS	MARICOPA
030036	CHANDLER REGIONAL MEDICAL CENTER	MARICOPA
030119	MERCY GILBERT MEDICAL CENTER	MARICOPA
034020	HAVEN BEHAVIORAL HOSPITAL OF PHOENIX	MARICOPA
030001	ABRAZO MARYVALE CAMPUS	MARICOPA
032000	CURAHEALTH NORTHWEST PHOENIX	MARICOPA
034024	AURORA BEHAVIORAL HEALTH SYSTEM	MARICOPA
030126	ARIZONA REGIONAL MEDICAL CENTER	MARICOPA
033040	DIGNITY HEALTH EAST VALLEY REHABILITATIO	MARICOPA
030069	HAVASU REGIONAL MEDICAL CENTER	MOHAVE
030128	HUALAPAI MOUNTAIN MEDICAL CENTER	MOHAVE
030101	WESTERN ARIZONA REGIONAL MEDICAL CENTER	MOHAVE
030117	VALLEY VIEW MEDICAL CENTER	MOHAVE
030084	CHINLE COMPREHENSIVE HEALTH CARE FACILIT	NAVAJO
034027	CHANGEPOINT PSYCHIATRIC HOSPITAL	NAVAJO
030113	WHITERIVER PHS INDIAN HOSPITAL	NAVAJO
030062	SUMMIT HEALTHCARE REGIONAL MEDICAL CENTE	NAVAJO
030074	SELLS HOSPITAL	PIMA
030011	ST JOSEPH'S HOSPITAL	PIMA
030010	ST. MARY'S HOSPITAL	PIMA
032002	SELECT SPECIALTY HOSPITAL-TUCSON LLC	PIMA
034022	SONORA BEHAVIORAL HEALTH HOSPITAL	PIMA
032004	CORNERSTONE SPECIALTY HOSPITALS TUCSON	PIMA
030137	SANTA CRUZ VALLEY REGIONAL HOSPITAL	PIMA
030085	NORTHWEST MEDICAL CENTER	PIMA

Continued on next page

Table 3 – Continued from previous page

CCN	Name	County
034033	CORNERSTONE BEHAVIORAL HEALTH EL DORADO	PIMA
033029	ENCOMPASS HEALTH REHABILITATION HOSPITAL	PIMA
034030	PALO VERDE BEHAVIORAL HEALTH	PIMA
030100	CARONDELET HEART AND VASCULAR INSTITUTE	PIMA
030114	ORO VALLEY HOSPITAL	PIMA
030132	FLORENCE HOSPITAL AT ANTHEM, LLC	PINAL
030129	FLORENCE COMMUNITY HEALTHCARE	PINAL
030134	BANNER GOLDFIELD MEDICAL CENTER	PINAL
030118	YAVAPAI REGIONAL MEDICAL CENTER-EAST CAM	YAVAPAI
030012	YAVAPAI REGIONAL MEDICAL CENTER	YAVAPAI
034036	MEDICAL BEHAVIORAL HOSPITAL OF NORTHERN	YAVAPAI
033036	MOUNTAIN VALLEY REGIONAL REHABILITATION	YAVAPAI
033034	YUMA REHABILITATION HOSPITAL,AN AFFILIAT	YUMA

4 All Other Hospitals

“Non-A Non-B” established teaching hospitals: Hospitals that don’t appear to qualify for a PRA/cap reset because they have claimed FTE greater than the eligibility criteria for category A (at least 1.0 FTE) or category B (more than 3.0 FTE).

Next Step: “Non-A Non-B” should confirm that they are not in fact eligible for a PRA/cap reset.

Table 4: Neither Category A nor Category B

CCN	Name	County	PRA?	Max PRA
030017	MESA GENERAL HOSPITAL	City: MESA	*	78026
030059	ARIZONA SURGICAL HOSPITAL	City: PHOENIX	*	16724
030102	ARIZONA HEART HOSPITAL	City: PHOENIX		
030003	PHOENIX MEMORIAL HOSPITAL	City: PHOENIX	*	67342
030002	BANNER - UNIVERSITY MEDICAL CENTER PHOEN	City: PHOENIX		156390
030019	TEMPE ST LUKE’S HOSPITAL, A CAMPUS OF ST	City: TEMPE		115423
030009	KINO COMMUNITY HOSPITAL	City: TUCSON	*	66862
030035	TUCSON GENERAL HOSPITAL	City: TUCSON	*	63314
030043	CANYON VISTA MEDICAL CENTER	COCHISE	*	99040
030024	ST. JOSEPH’S HOSPITAL AND MEDICAL CENTER	MARICOPA		129911
030089	BANNER THUNDERBIRD MEDICAL CENTER	MARICOPA	*	0
030094	ABRAZO ARROWHEAD HOSPITAL	MARICOPA		135000
030038	HONORHEALTH SCOTTSDALE OSBORN MEDICAL CE	MARICOPA		153588
030030	ABRAZO CENTRAL CAMPUS	MARICOPA		157553
030014	JOHN C. LINCOLN NORTH MOUNTAIN HOSPITAL	MARICOPA		123563
030103	MAYO CLINIC HOSPITAL	MARICOPA		141271
030123	HONOR HEALTH THOMPSON PEAK MEDICAL CENTE	MARICOPA		140918
030110	ABRAZO WEST CAMPUS	MARICOPA	*	0
030022	VALLEYWISE HEALTH MEDICAL CENTER	MARICOPA		144239
030037	ST LUKE’S MEDICAL CENTER	MARICOPA		115423
033302	PHOENIX CHILDREN’S HOSPITAL	MARICOPA	*	98884
030121	MOUNTAIN VISTA MEDICAL CENTER, LP	MARICOPA		140312
030087	HONORHEALTH SCOTTSDALE SHEA MEDICAL CENT	MARICOPA		120506
030055	KINGMAN REGIONAL MEDICAL CENTER	MOHAVE	*	97175
030006	TUCSON MEDICAL CENTER	PIMA	*	93374

Continued on next page

Table 4 – Continued from previous page

CCN	Name	County	Review PRA?	Max PRA
030064	BANNER - UNIVERSITY MEDICAL CENTER TUCSO	PIMA	*	95320
033028	ENCOMPASS HEALTH REHABILITATION INSTITUT	PIMA	*	69380
030111	BANNER-UNIVERSITY MEDICAL CENTER SOUTH C	PIMA	*	96490
030007	VERDE VALLEY MEDICAL CENTER	YAVAPAI	*	94120

An asterisk in the PRA? column denotes that the maximum PRA paid by the hospital is less than benchmark PRA for the region.

Additional Resources:

- **Rural GME HCRIS Data Tool:** Tool used to determine whether a hospital potentially qualifies for a PRA reset.
- **CMS Provider Number Lookup:** Tool used to determine your hospital provider number. You can also find your provider number using the Rural GME HCRIS Data Tool in the state list.
- **Impact of CMS Rule Changes on Rural GME: A Deeper Dive into Section 131:** RRPD-TAC webinar on Section 131.
- **CMS Guidance on Section 131:** FAQ published by CMS on hospitals eligible to reset PRA/Cap.
- **How to contact a Medicare Administrative Contractor (MAC):** CMS website with MAC contact information.
- **The FY22 IPPS Final Rule,** beginning page 73416, contains the formal regulations.

Acknowledgement

Disclaimer: The grant program is supported by the Health Resources and Services Administration of the U.S. Department of Health and Human Services under cooperative agreement #UK6RH32513. The content does not necessarily represent the official views of, nor an endorsement, by HRSA, HHS, or the U.S. Government.