



Access Challenges in Rural and Tribal Communities

2020 Region A SORH Regional Meeting

July 23, 2020

2:30 PM to 3:15 PM ET



Agenda

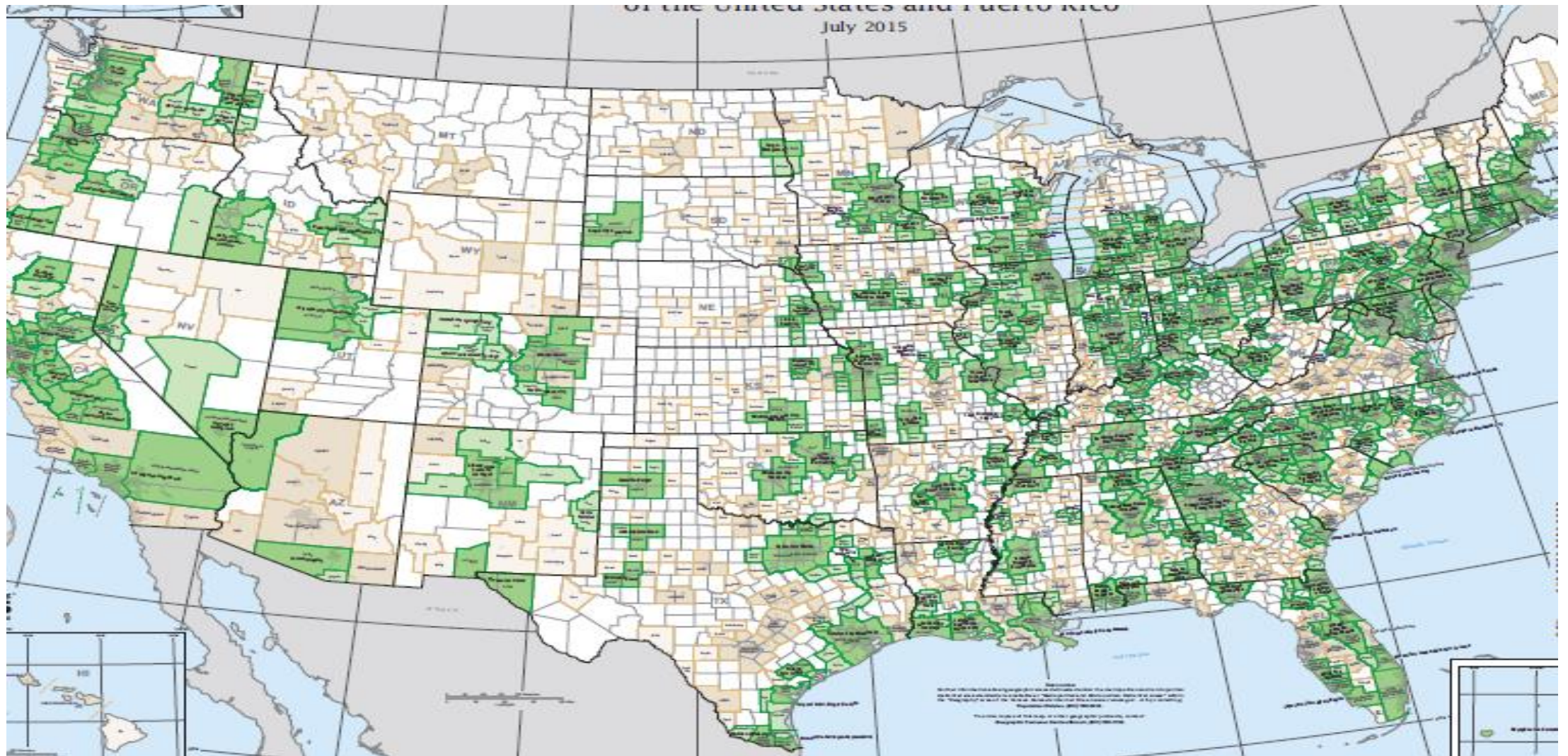
- Access challenges
- How do I find transit?
- What tools and resources are available to assist community health programs interested in increasing access to healthy food, medical and social services and activities?
 - Project access to assistance for Pandemic Recovery
 - Opioid Recovery Communities
- Challenges and strategies for effective service in tribal and rural communities in the aging and disability communities as well as building opportunity for low income and isolated rural families. Case studies, partnerships

National Rural Transit Assistance Program

- Technical assistance center funded by FTA through Section 5311
- We provide FREE training materials and technical assistance products and services to rural and tribal transits and support the State RTAP programs
- National RTAP's vision is for safe, compliant, efficient and effective rural and tribal transit that reflects the needs of communities nationally
- National Review Board – 7 state DOT officials and 7 rural or tribal transit providers

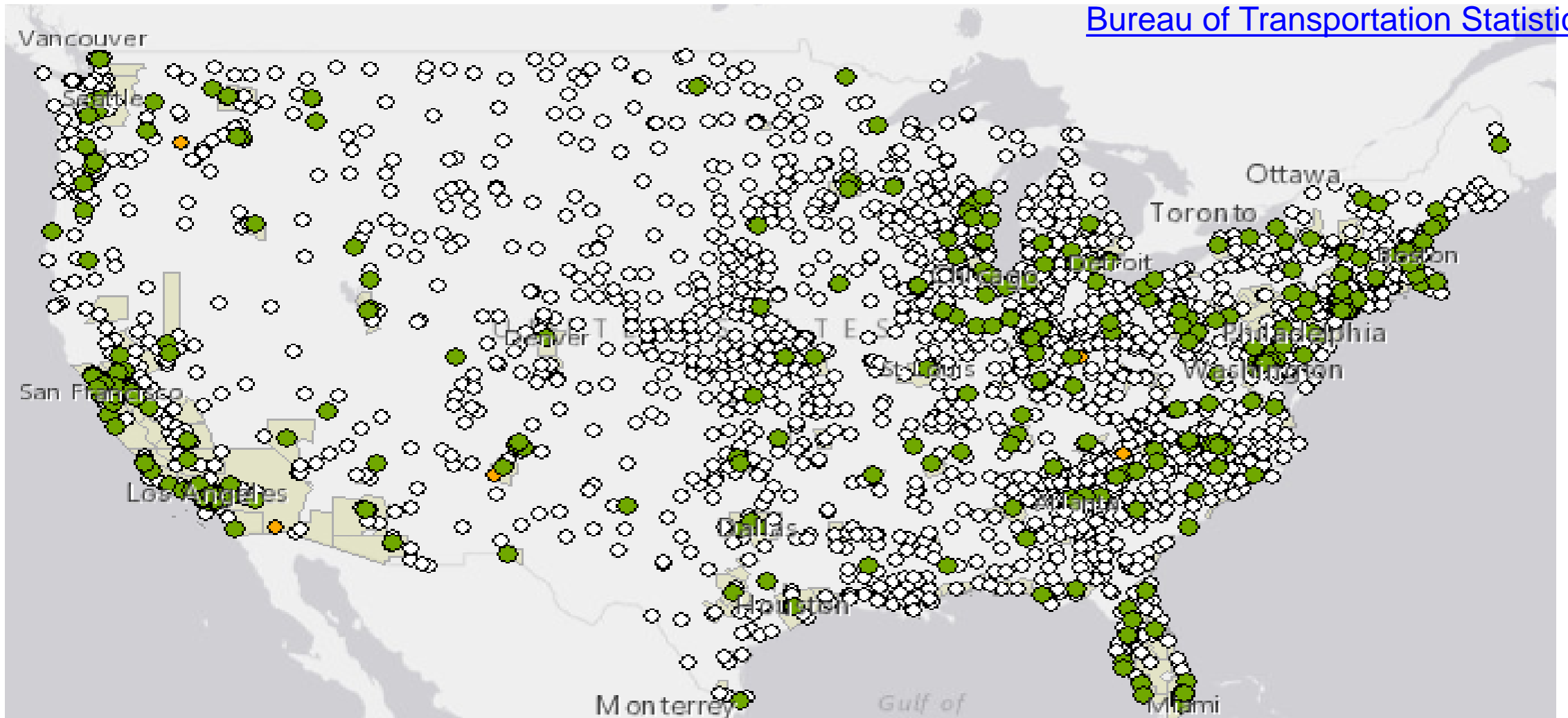
Access Challenges

Rural and Urban



What is out there: US Transit Map

[Bureau of Transportation Statistics](#)



Access Challenges

- The NRTAP transit and mobility vision is
 - *safe,*
 - *secure,*
 - *compliant,*
 - *efficient, and*
 - *effective*
- rural and tribal transit reflecting the needs and values of communities individually and nationally.
- Through NRTAP Review Board, state RTAP manager and operator forums, rural and tribal operators can share interests and needs, as well as guide development of products and services to achieve our vision.
- Local/State Coordinated Human Service and Transportation Plans

Challenges

Infrastructure, Demographics, Data and Distance

- **17% of people over 65 don't drive**, AARP 2012.
Stuck Without Options.
- **Pedestrians 65+ made up 21% of pedestrian fatalities** in 2018, National Center for Statistics and Analysis (NCSA) 2020.
Pedestrians: 2018 data.
- 8% of people urban or rural are **mobility challenged**, Oregon DOT 1998.
Research.
- **Healthcare is a weak indicator of health**, Kaiser Family Foundation, 2018.
Beyond Healthcare.

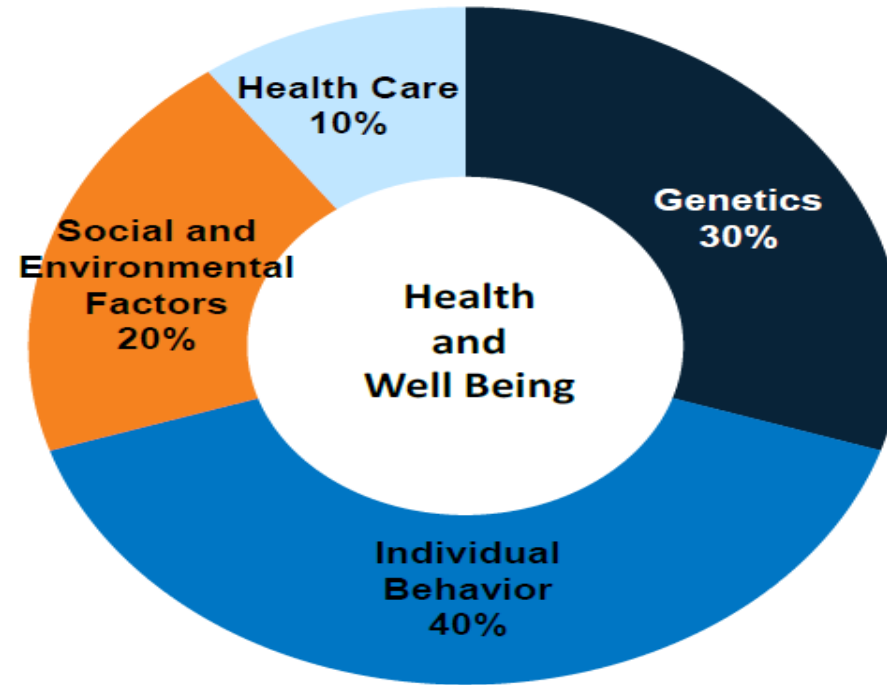
Audience: What Are Your Challenges?

- Infrastructure
 - Sidewalks, Transit, access, accessibility, Bike connectivity, institutional isolation.
Where is your program located?
- Demographics
 - Older, historic settlement, poorer, new multi ethnic, isolation, disability
- Data
 - Demand aggregation, scattered services, technology mismatch, lack of information sharing. *Do you know what people are trying to do, when, and where?*
- Distance
 - Walking (0-1 mile), biking (1-6miles), transit(1-10miles), commuter (everyday employer based), Medicaid (local regional), Intercity(regional national)

Transportation is Fundamental

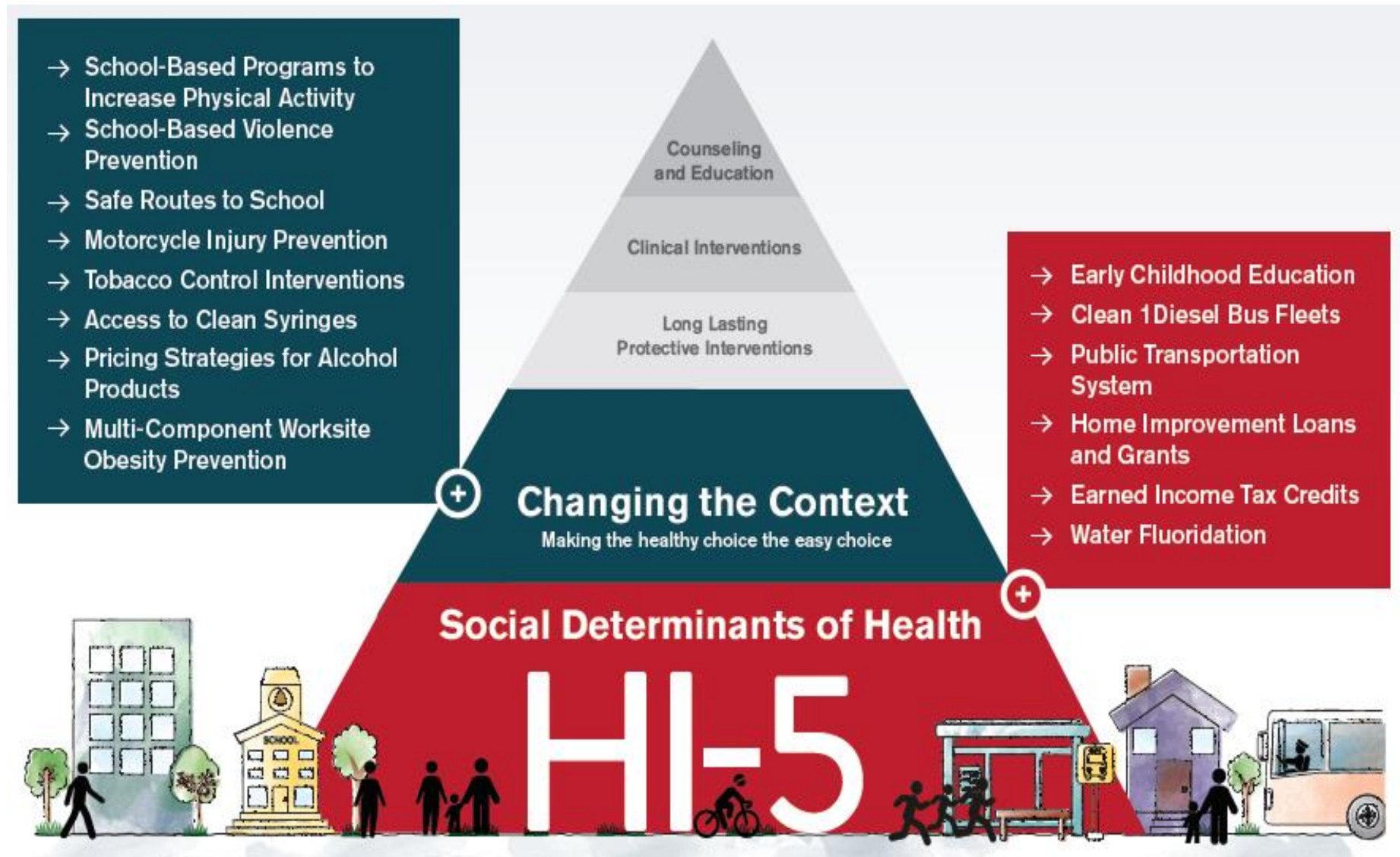
Figure 2

Impact of Different Factors on Risk of Premature Death



SOURCE: Schroeder, SA. (2007). We Can Do Better — Improving the Health of the American People. *NEJM*. 357:1221-8.

Transportation is Part of the Solution



How do I Find Transit?

How do I find transit : Steps 1 to 3

In a rural area you may not see a bus stop but that is not the first step:

1. What do you or your clients need?

- Ask them. Where to where, when, if they have a way reliable?

2. Google the name of the location you are working with and the word "transit" in one search. This is to find the closest transit to your project

- Try it with the county name if nothing comes up
- If you still get nothing call the state DOT transit section and ask about services in the area, potentially demand response or social service grantees.

3. If there is transit in the area talk to them

- Ask whether they have a transit plan, get a copy, it may just be a project list
- If they receive FTA 5310 they have a coordinated human service and transportation plan

Example

12/13/2018

pendleton transit - Google Search



pendleton transit



hermiston hopper bus schedule
wildhorse casino shuttle service
kayak bus hermiston oregon
hermiston hopper bus schedule pdf
la grande bus schedule
ctuir
hermiston hopper october 2018
pendleton taxi

[Report inappropriate predictions](#)

[Transportation | City of Pendleton](#)

pendleton.or.us/transportation ▼

Need a ride to the store? Work? Baseball practice? College? Auto repair? We've got options for you! The City of Pendleton transportation programs consist of ...

[Kayak Public Transit | Confederated Tribes of the Umatilla Indian ...](#)

ctuir.org/tribal-services/planning/kayak-public-transit ▼

Kayak Public Transit provides community and economic support by managing ... 97801 Pendleton , OR
... Kayak Public Transit Observes the Following Holidays:.

[Transit Services](#) · [Walla Walla Whistler Schedule](#) · [Hermiston Hopper Schedule](#)

How do I find transit : Steps 4 and 5

4. Go to Google Transit and put in a trip between your project location and the nearest grocery store:

- a) Does anything come up?
- b) If you don't get anything go to the closest larger community and propose a trip to the next larger city. This will surface any proximate intercity services with rail or bus.

5. Meet with them to talk about the transportation issues your program and clients are facing:

- a) Have you surveyed your clients to identify what their transportation needs are for your program and other areas in their life?
- b) Ask the transit program how you can work with them to identify costs for meeting those needs and strategies for meeting those needs.

Google for Bikes: Getting to Groceries



Nassau Woods Mobile Home Community to Food Lion, E. Hwy 80, Pooler, GA

Bicycle 4.3 miles, 23 min



Imagery ©2019 Google, Map data ©2019 Google 1000 ft



via GA-307 N/Dean Forest Rd and Old Louisville Rd 23 min
4.3 miles

How do I find transit : Step 6

6. Define a project that would meet the needs of your clients:
 - a) Do they want to work with you? They may not have any resources or may be maxing out their existing resources. They may have ideas for strategies that build on existing resources
They may have ideas for strategies that build on existing resources and cost allocation methodology
 - b) What resources can you bring to the table to help develop the services for your clients?

How do I find transit : Step 7

7. What is the project funding process:

- a) Ask them to describe the process. Ask the state the same question. There are other resources for planning and projects at the state level.
- b) Transit receives an annual appropriation. The state allocates and subgrants the money differently in every state. The state spending plan is a 4 year horizon. A project must be in **A PLAN** to be funded.
- c) You can amend plans, or sometimes descriptions are so vague you can be added into the details with a minimum of work.

What tools do we have that might help you ?

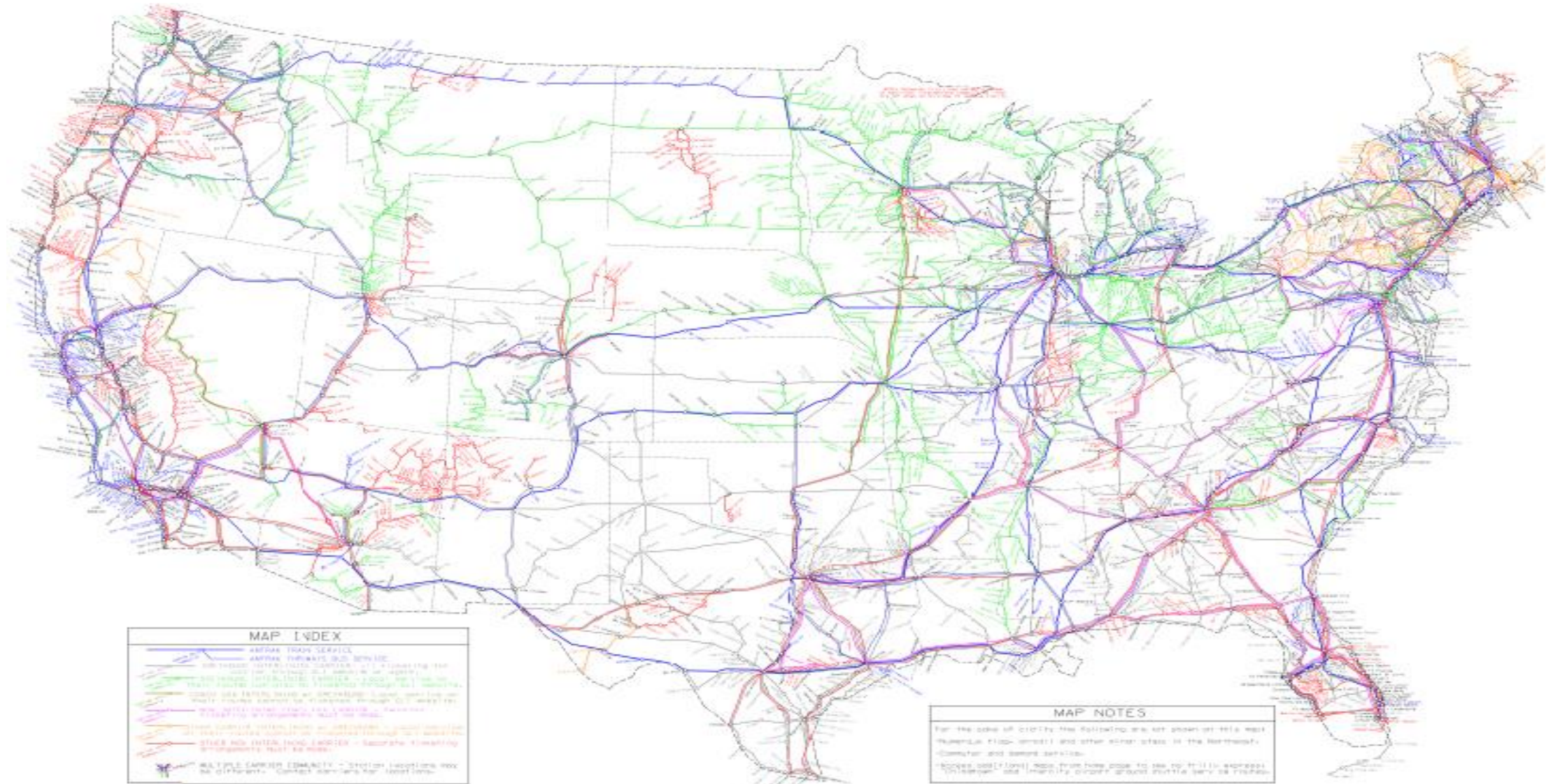
How can we help you ?

Find your community from a different perspective:

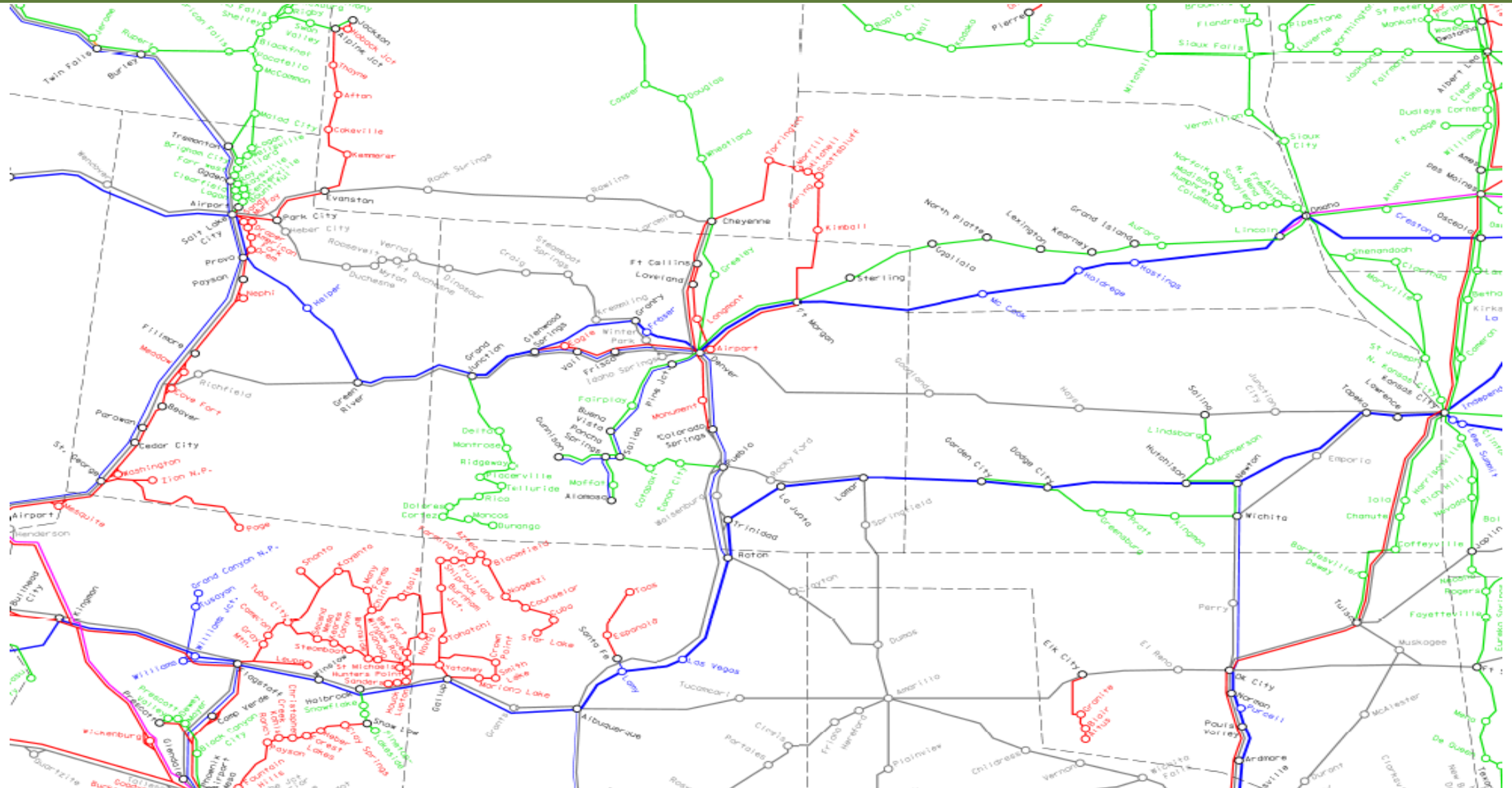
- Partnerships to plan and build capacity
- coordinated planning processes to make your needs visible
- US Transit Map to see where there is fixed route transit and people to help you
- GTFS Analyzer: add census data and population segments at the block level to a GIS layer of local and intercity transit stops
- Federal Transit Administration grant programs can fund coordinated services, planning, sidewalk and stop enhancements, can use your money or in-kind help as match

We are all multimodal

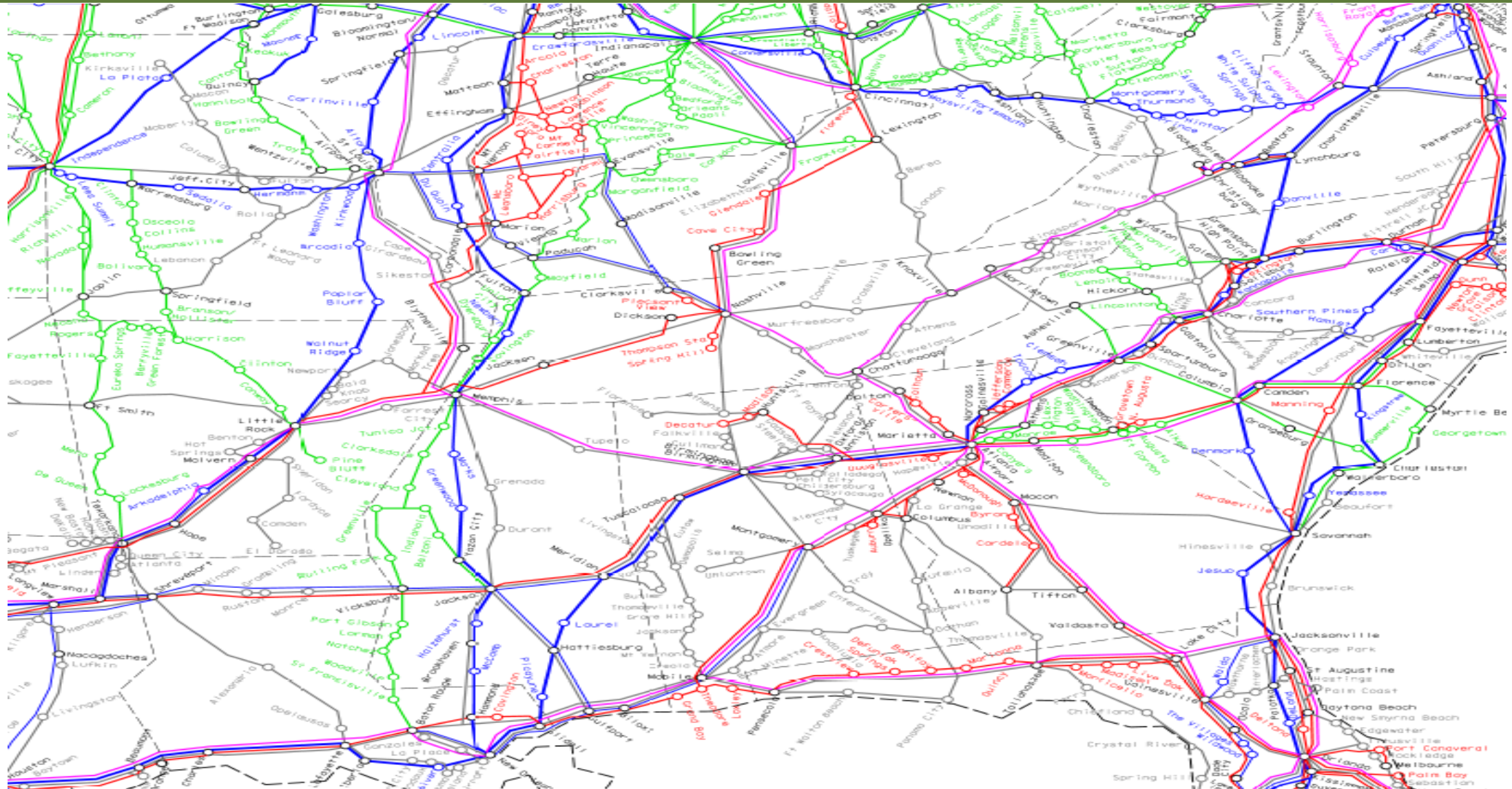
A National Network of Services



Regional Intercity Access



Appalachian Access



Challenges and Strategies

Community Connections of NE Oregon

- **Wallowa County**
 - Demand response transit
 - Work shuttle
 - 4 days a week intercity connection
 - Summer circulator to State Park
 - Medicaid transportation
 - Veterans Shuttle
- **Union County**
 - Fixed Route service
 - Intercity and Regional Transit Hub
 - Medicaid transportation
 - Pilot service and Cost Benefit for medical trips
- **Baker County**
 - Deviated Fixed
 - Regional commuter connector
 - Shopper Shuttle to Halfway 1x per week
 - Medicaid transportation
 - Veterans transportation
- **Shared Strategies**
 - Coordinated planning
 - Shared Tech platform
 - Shared Admin through the triple A
 - Bike Bus access

Confederated Tribes of the Umatilla

KAYAK PUBLIC TRANSIT

Kayak Public Transit provides community and economic support by managing a multi-modal, regional transportation system reaching into southeastern Washington and northeastern Oregon. We currently run six Fixed Routes with the Hermiston HART, Hermiston Hopper, La Grande Arrow, Mission Metro, Pilot Rocket, Tutuilla Tripper, and Walla Walla Whistler. Our transit program is funded through a combination of Federal grants, State grants, and CTUIR general funds. The Fixed Route bus services are currently free to the general public.



National RTAP Technical Assistance Conference

Robin Phillips

Executive Director

National Rural Transit Assistance Program

718 7th Street NW, Washington, DC 20001

www.nationalrtap.org

888.589.6821 Main toll Free

781.697.7194 Cell

