



Everything You've Always Wanted to Know About Rural ?

STATE OFFICES OF RURAL HEALTH ORIENTATION MEETING

Steven Hirsch

**U.S. Department of Health and Human Services
Health Resources and Services Administration
Federal Office of Rural Health Policy**



Who Defines Rural?

- The Census Bureau
- The Office of Management and Budget (OMB)
- United States Department of Agriculture's Economic Research Service (ERS)
- Federal Office of Rural Health Policy (ORHP)



The Census Bureau

The Census Bureau identifies two types of urban areas:

- Urbanized Areas (UAs) of 50,000 or more people;
- Urban Clusters (UCs) of at least 2,500 and less than 50,000 people.



The Census Bureau

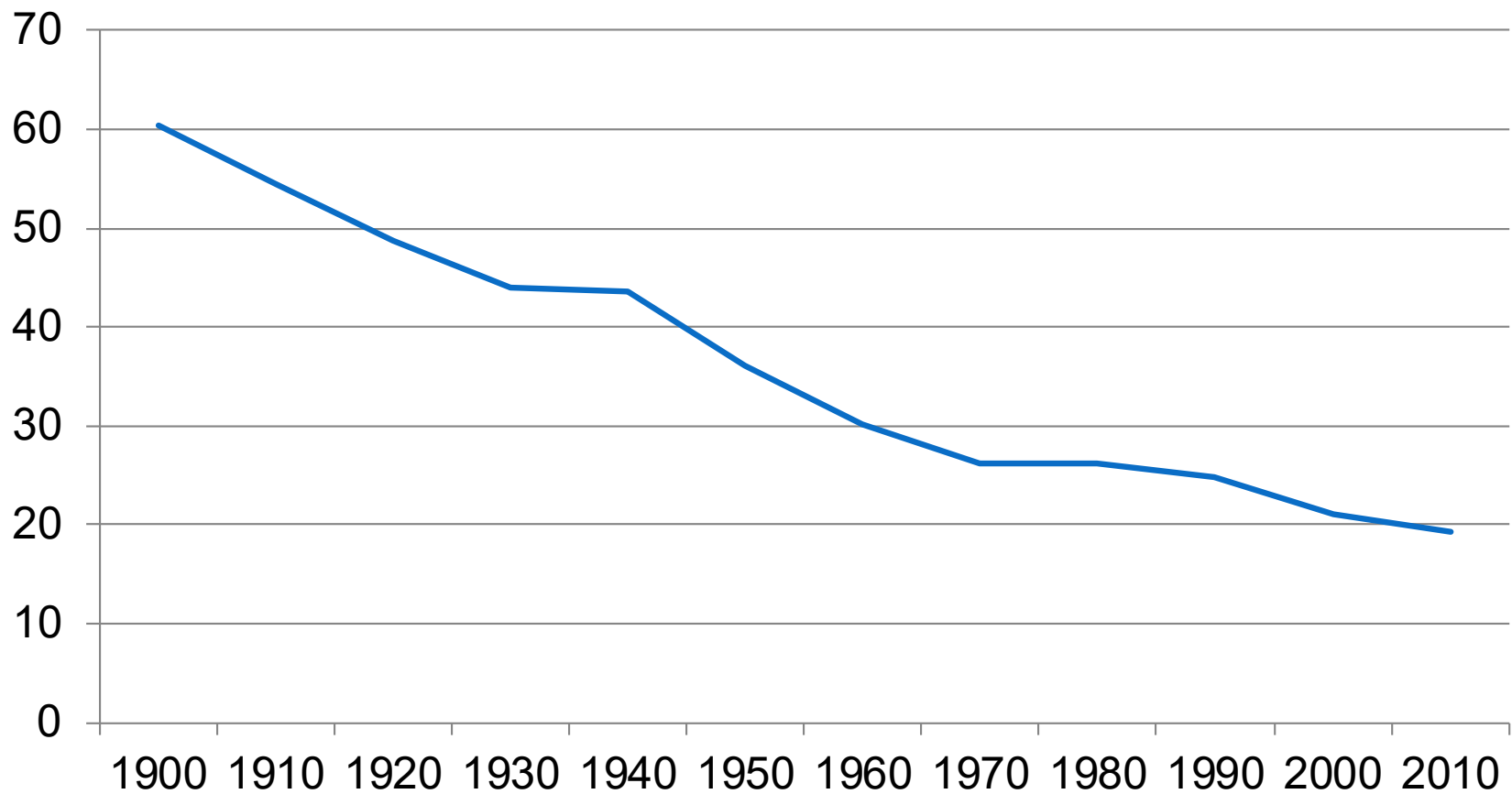
For the 2010 Census, an urban area will comprise a densely settled core of census tracts and/or census blocks that meet minimum population density requirements, along with adjacent territory containing non-residential urban land uses as well as territory with low population density included to link outlying densely settled territory with the densely settled core. To qualify as an urban area, the territory identified according to criteria must encompass at least 2,500 people, at least 1,500 of which reside outside institutional group quarters.



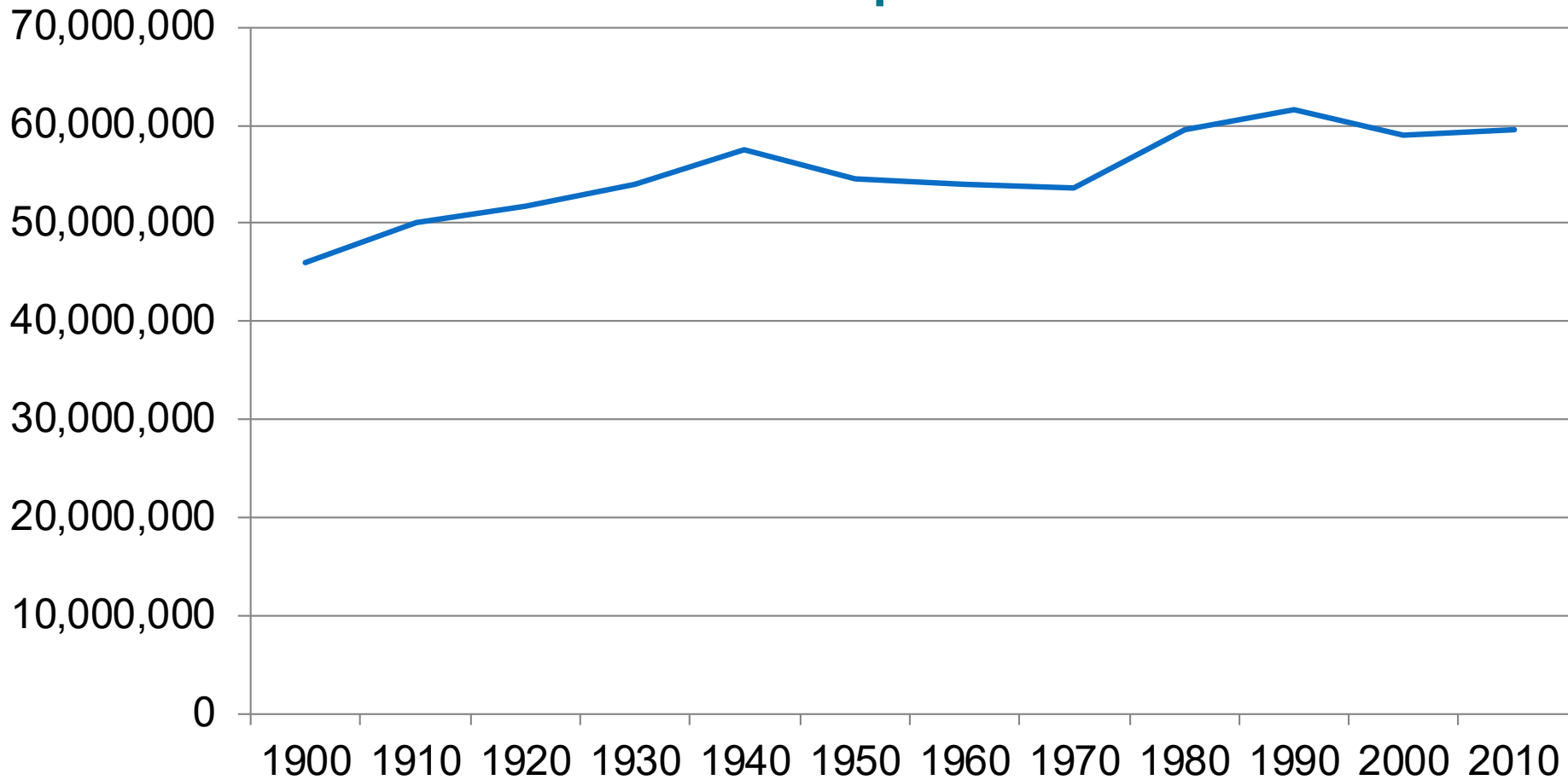
Urban/Rural Population

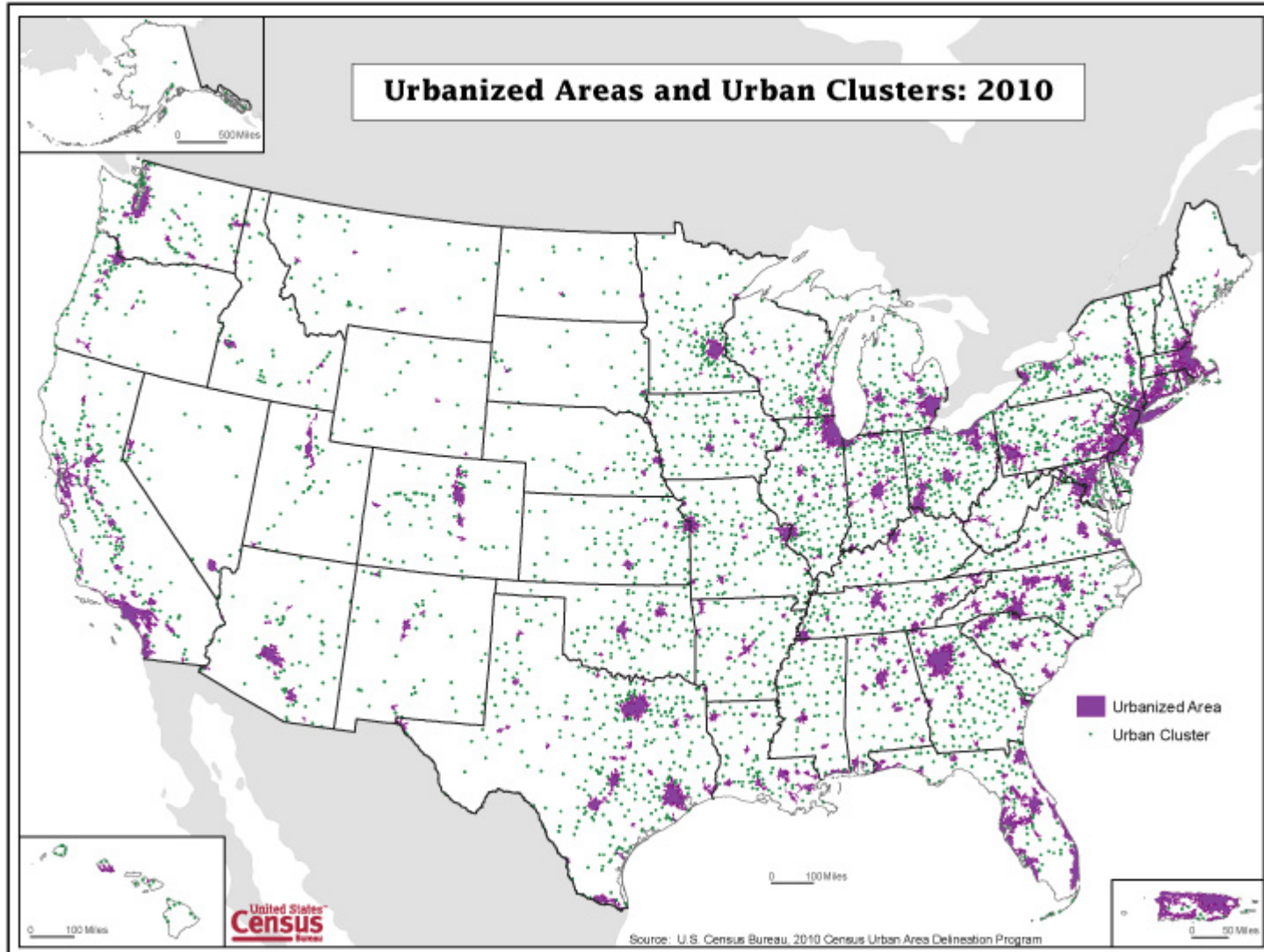
Area	Population		Percentage of Population	
	2010	2000	2010	2000
United States	308.7 million	281.4 million		
Urban	249.2 million	222.3 million	80.7%	79%
Urbanized Areas	219.9 million	192.3 million	71.2%	68.3%
Urban Clusters	29.3 million	30 million	9.5%	10.7%
Rural	59.5 million	59 million	19.3%	21%

Rural % of US Population

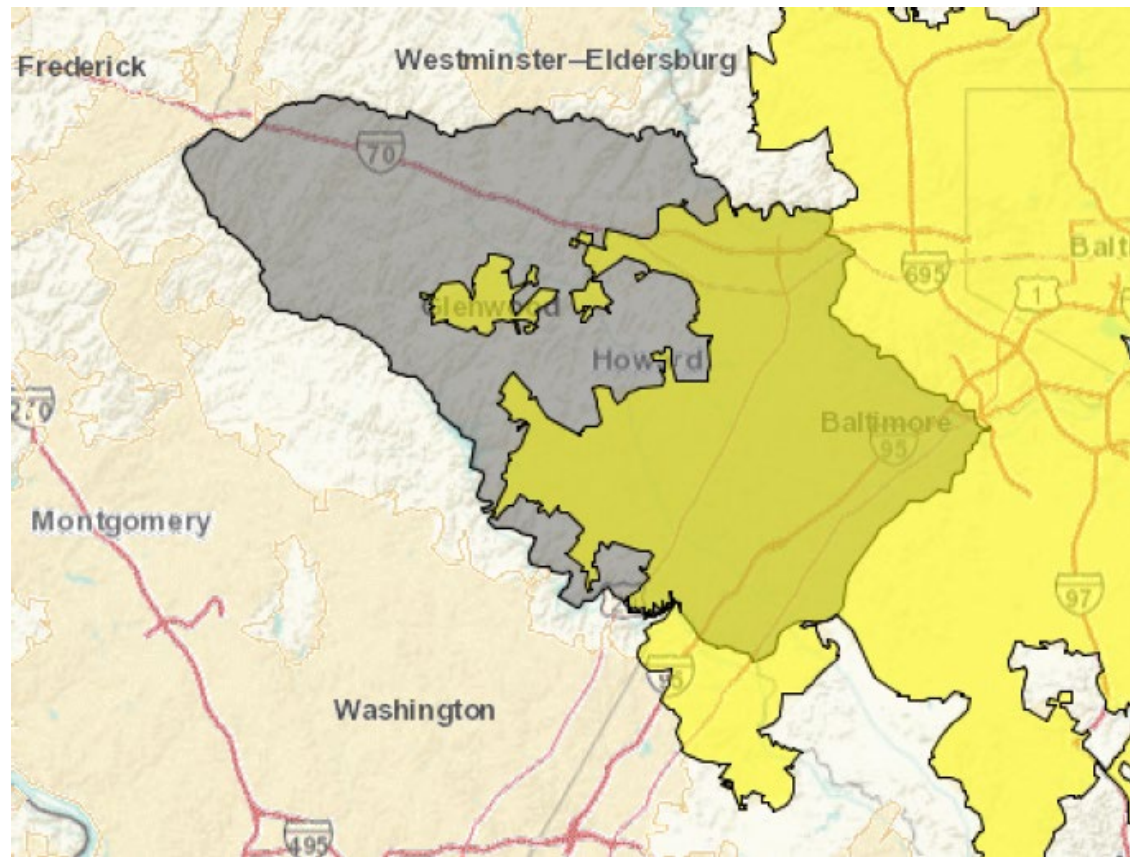


Rural US Population





Howard County, Maryland



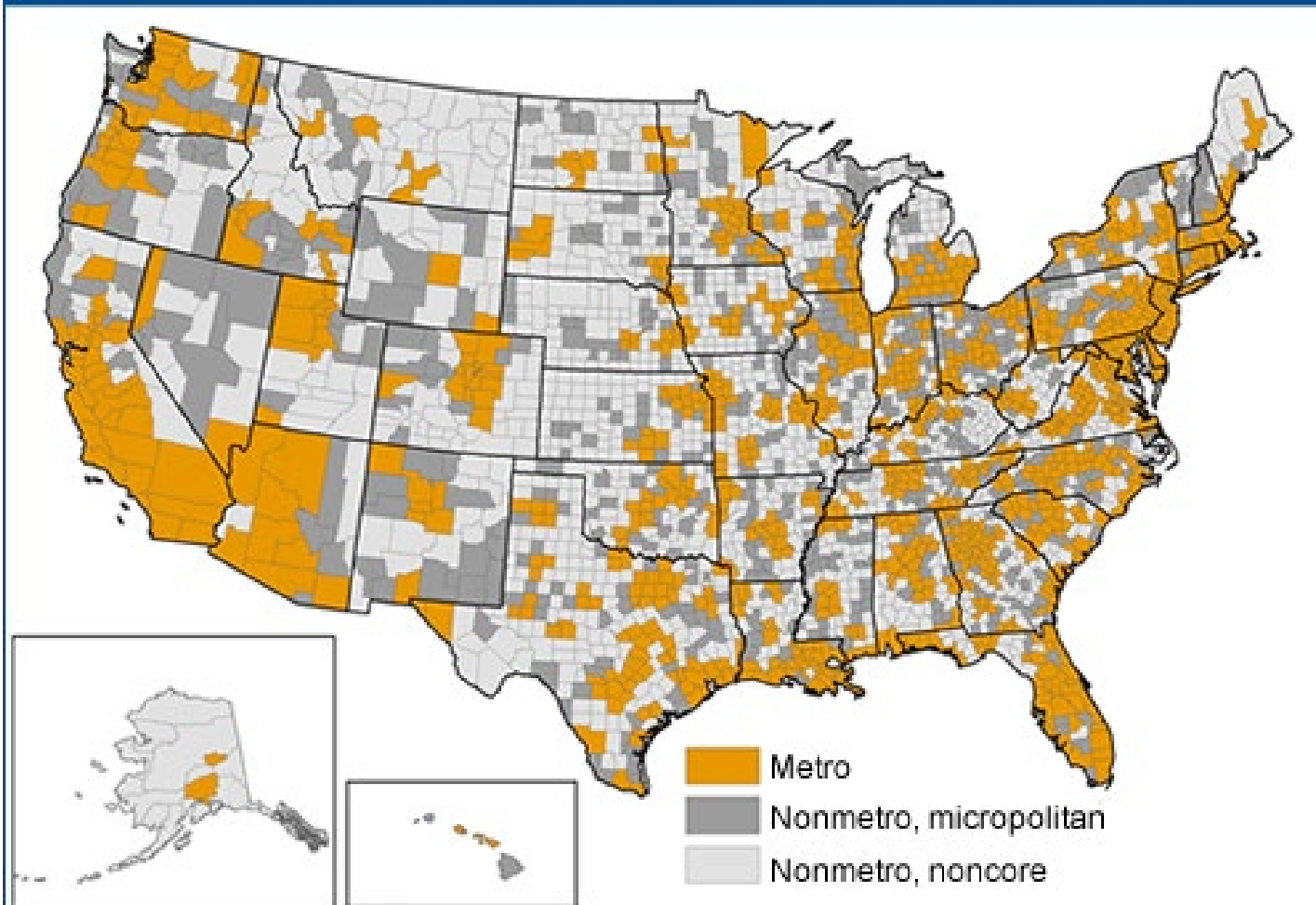
OMB

- OMB defines Metropolitan and Micropolitan Statistical Areas
 - Metro Areas contain a core urban area of 50,000 or more population
 - Micro Areas contains an urban core of at least 10,000 (but less than 50,000) population.
- Known as Core Based Statistical Areas (CBSAs)

OMB

Each metro or micro area consists of one or more counties and includes the counties containing the core urban area, as well as any adjacent counties that have a high degree of social and economic integration (as measured by commuting to work) with the urban core.

Metro, nonmetro micropolitan, and nonmetro noncore counties, 2013



Source: USDA, Economic Research Service using data from the U.S. Census Bureau.



OMB County Designations

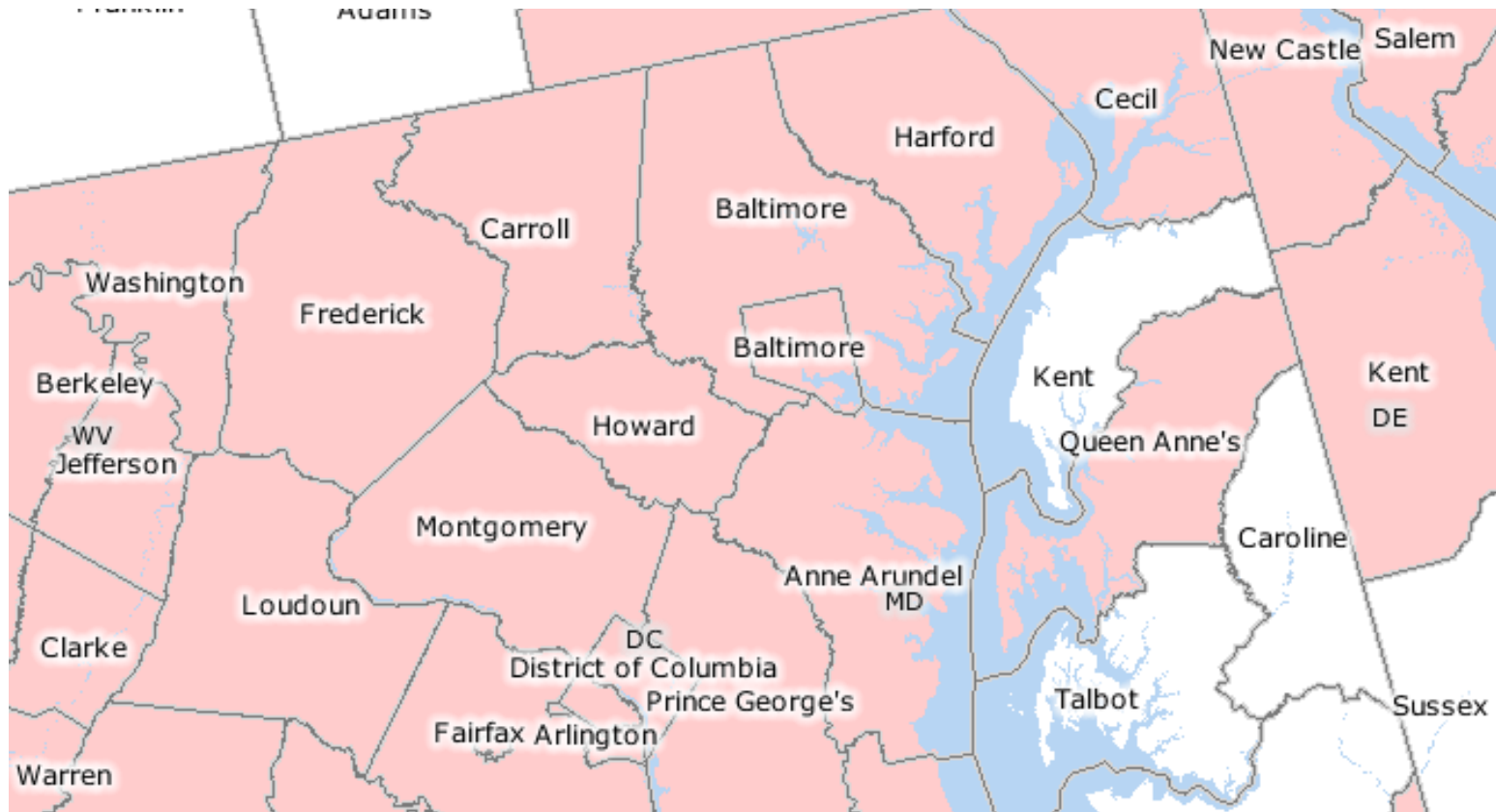
	Metro	Micro	Neither	Non-Metro (Total Neither and Micro)
1999 OMB	870 (27.7%)			2270 (72.3%)
2009 OMB	1100 (35.1%)	688 (21.8%)	1353 (43.1%)	2041 (66.9%)
Current OMB	1168 (37.1%)	640 (20.4%)	1335 (42.4%)	1975 (62.8%)



OMB Counties, 2010 Census

	Population (%) (2009 OMB)	Population (%) (2013 OMB)
Metro	258,317,763 (83.7)	262,452,132 (85)
Micro	30,943,552 (10)	27,154,213 (8.8)
Neither	19,484,223 (6.3)	19,139,193 (6.2)
Total Non-metro	50,427,775 (16.3)	46,293,406 (15)

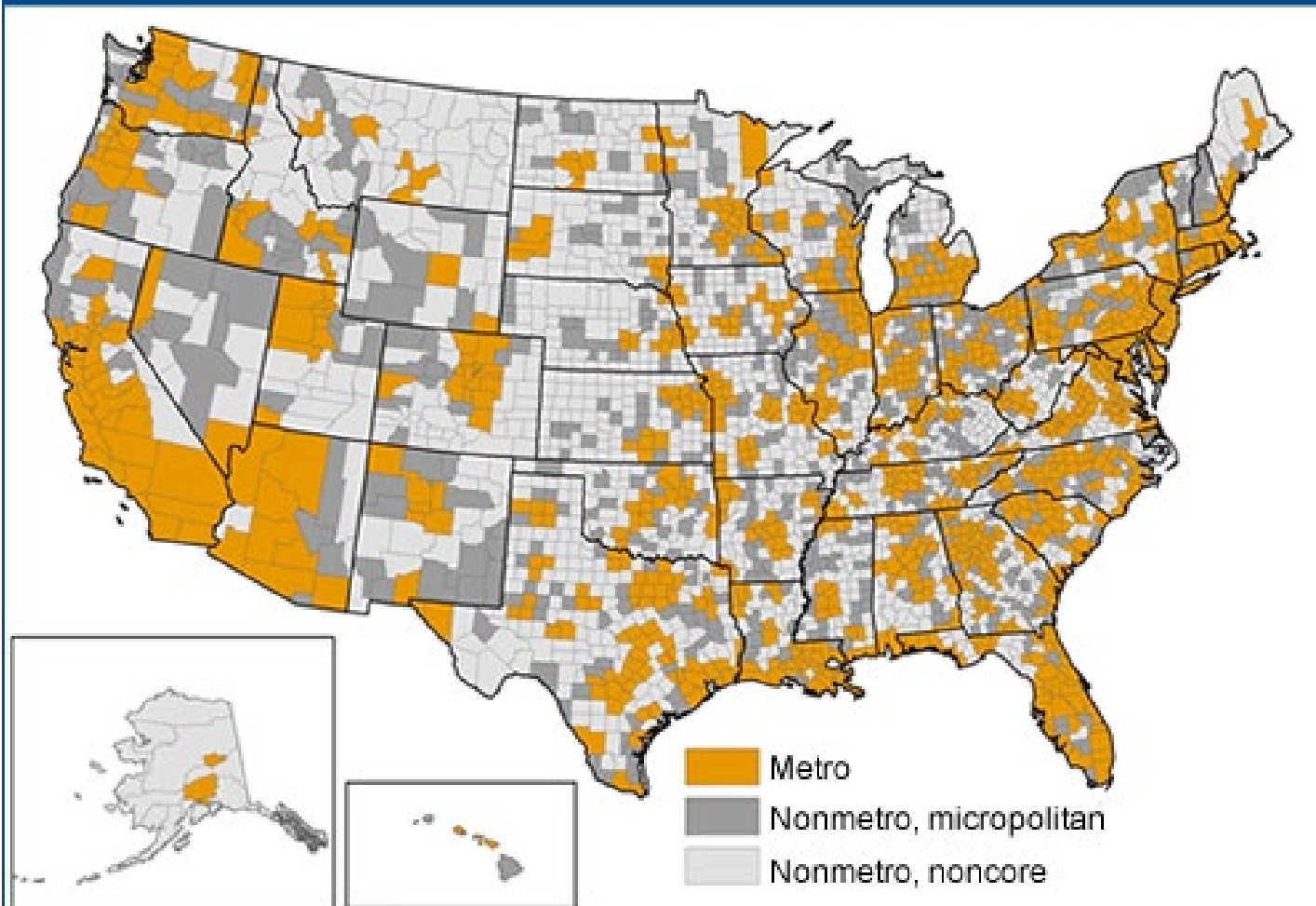
Metro Counties in Maryland







Metro, nonmetro micropolitan, and nonmetro noncore counties, 2013



Source: USDA, Economic Research Service using data from the U.S. Census Bureau.



ORHP and ERS

- Rural-Urban commuting area (RUCA) codes
 - Provides sub county alternative
 - Takes functional relationships, population, & population density into account
 - Taxonomy is adjustable to fit unique needs
 - Scheme allows better targeting

RUCAs

1. Metropolitan area core: primary flow within an Urbanized Area (UA)
 2. Metropolitan area high commuting: primary flow 30% or more to a UA
 3. Metropolitan area low commuting: primary flow 10% to 30% to a UA

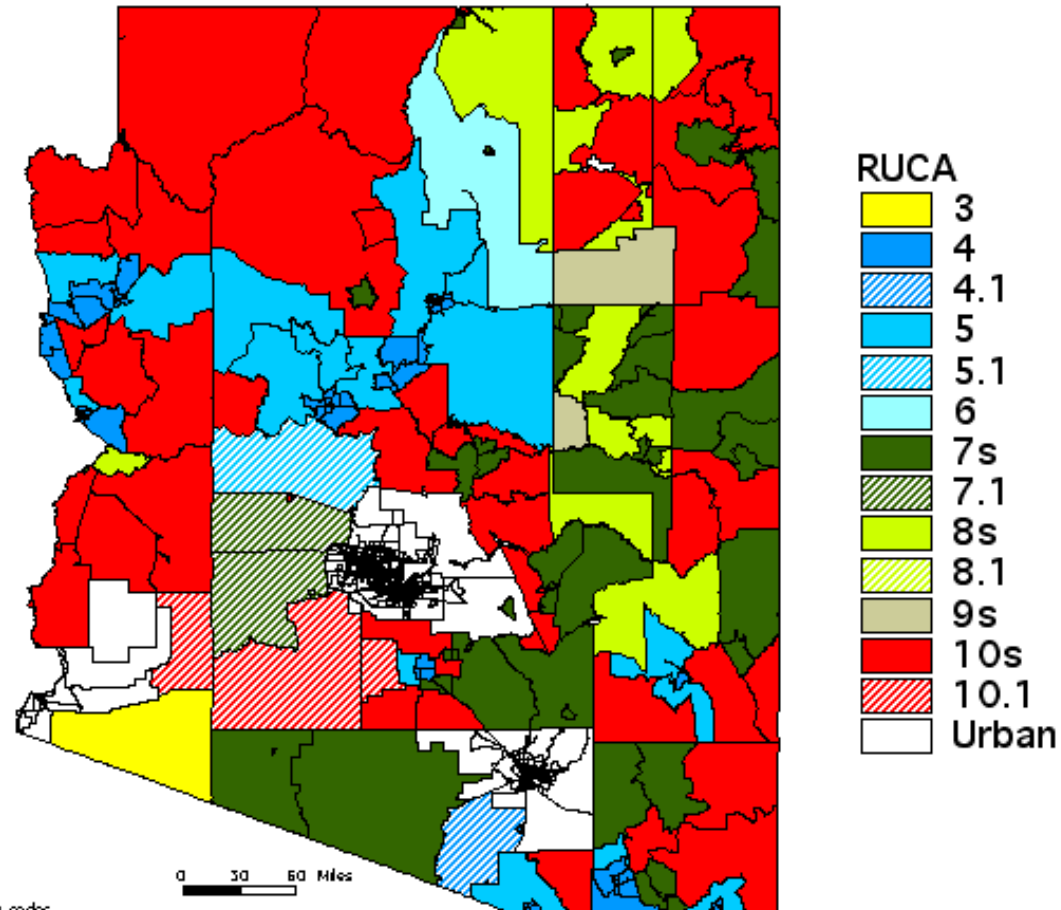
4. Micropolitan* area core: primary flow within an Urban Cluster of 10,000 through 49,999 (large UC)
 5. Micropolitan* high commuting: primary flow 30% or more to a large UC
 6. Micropolitan* low commuting: primary flow 10% to 30% to a large UC

7. Small town core: primary flow within an Urban Cluster of 2,500 through 9,999 (small UC)
 8. Small town high commuting: primary flow 30% or more to a small UC
 9. Small town low commuting: primary flow 10% through 29% to a small UC

- 10 Rural areas: primary flow to a tract outside a UA or UC (including self)

Arizona Rural Census Tracts

Rural-Urban Commuting Areas



This map is based on Version 1.0 RUCAs codes
Director L. Gary Hart PhD
Cartographer: Joseph Miller
WVRI Rural Health Research Center
University of Washington 7/2000



ORHP's Definition

- All Non-Metro Counties
- All RUCA Tracts 4-10 in Metro Counties
- Certain RUCA Tracts (over 400 sq. miles, fewer than 35 people per sq. mile and RUCA 2-3) in Metro Counties
- Around 57 million people
- Around 85% of the area of the USA



Pros/Cons

	Pros	Cons
Census	Large # of People	Doesn't Follow Administrative Borders
OMB	Easy to Use, Whole Counties	Rural and Frontier Areas are Misclassified
USDA	Easy to Use, Whole Counties, Finer Grain	Still Misclassifies Areas Within Counties
ORHP	Sub-County Units	Must Have Addresses or ZIPs

Where to Get More Details

- Census
 - <https://www.census.gov/geo/reference/urban-rural.html>
- Metro Areas
 - <https://www.census.gov/programs-surveys/metro-micro.html>
- ORHP
 - <https://data.hrsa.gov/tools/rural-health>



Contact Information

Steven Hirsch,
shirsch@hrsa.gov

301-443-0835

<http://www.hrsa.gov/ruralhealth/>