

Introduction to data.HRSA.gov for State Offices of Rural Health

December 6th, 2018

Bayard Catron, Office of Information Technology
Health Resources and Services Administration (HRSA)



HRSA Data Warehouse (HDW)

Offers accurate, up-to-date information on health care programs and needs

The HDW Vision

- To be the go-to source for reliable and relevant data about HRSA's public health investments, and to help the public locate Federally-funded health care facilities and services.

Available Data

- The HDW manages data from more than 30 HRSA and other federal government sources. We make the data available through our **data.hrsa.gov** site.
 - Grants
 - Health Centers
 - Shortage Areas
 - Area Health Resources Files (AHRF)
 - And many more



HRSA Data Warehouse (HDW)

What is a Data Warehouse?



HRSA Data Warehouse (HDW)

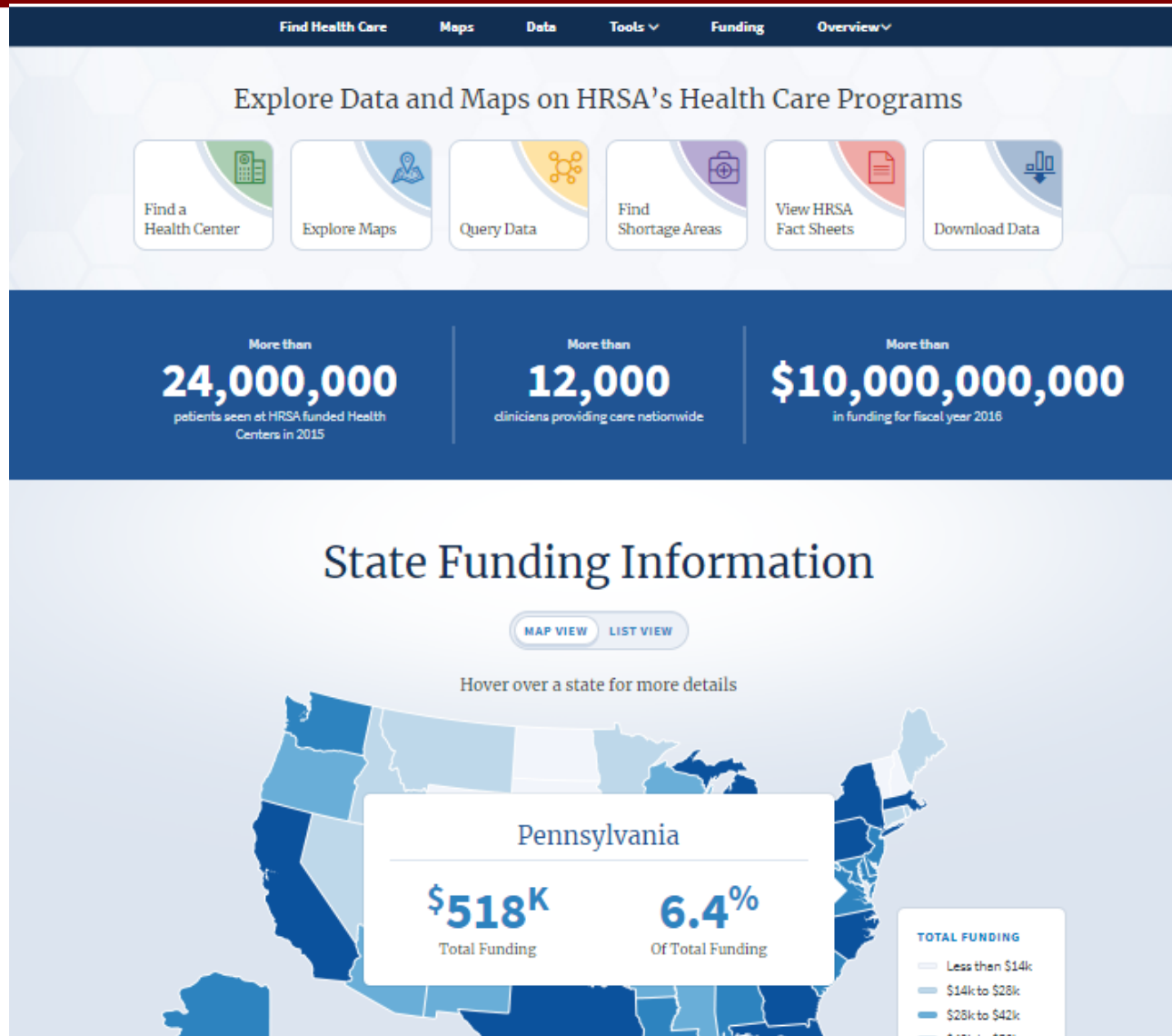
Overview

- **Data Warehouse: A large store of data accumulated from a wide range of sources within an organization; used to guide management decisions**
- **A “subject-oriented, integrated, time-variant and nonvolatile collection of data that supports the decision-making process”**
- **Enterprise data repository for HRSA, collects data nightly from many source systems**



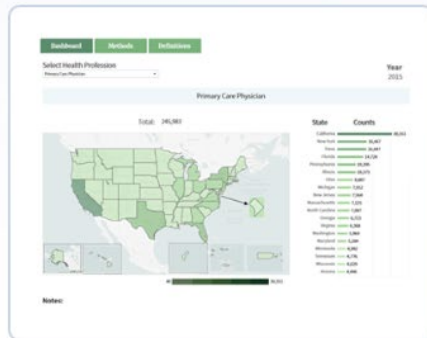
HRSA Data Warehouse (HDW)

Our new site is branded as data.hrsa.gov



HRSA Data Warehouse (HDW) Dashboards

Data Dashboards tell the story of HRSA's activities in a visual way



Area Health Resources Files (AHRF)



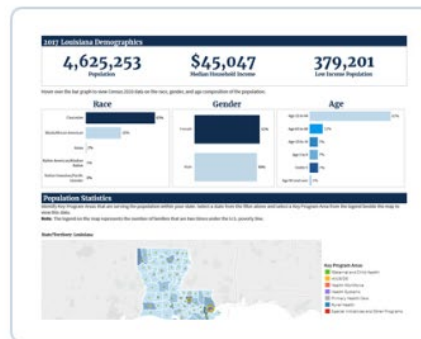
Grants



Health Professional Shortage Areas (HPSA)



Health Sites



Demographics



Medically Underserved Areas/Populations (MUA/P)

HRSA Data Warehouse (HDW)

Resources for Rural Health

- <https://data.hrsa.gov/topics/rural-health>
 - Query or download grant data and filter by state
- <https://data.hrsa.gov/topics/grants>
 - Explore grant data in a visual dashboard and map
- <https://data.hrsa.gov/hdw/tools/MapTool.aspx>
 - Use a powerful tool to create a custom map or start with a Quick Map already created for you

The HDW web site **data.hrsa.gov** allows users to interact with data in charts, tables/reports, maps, and tools.



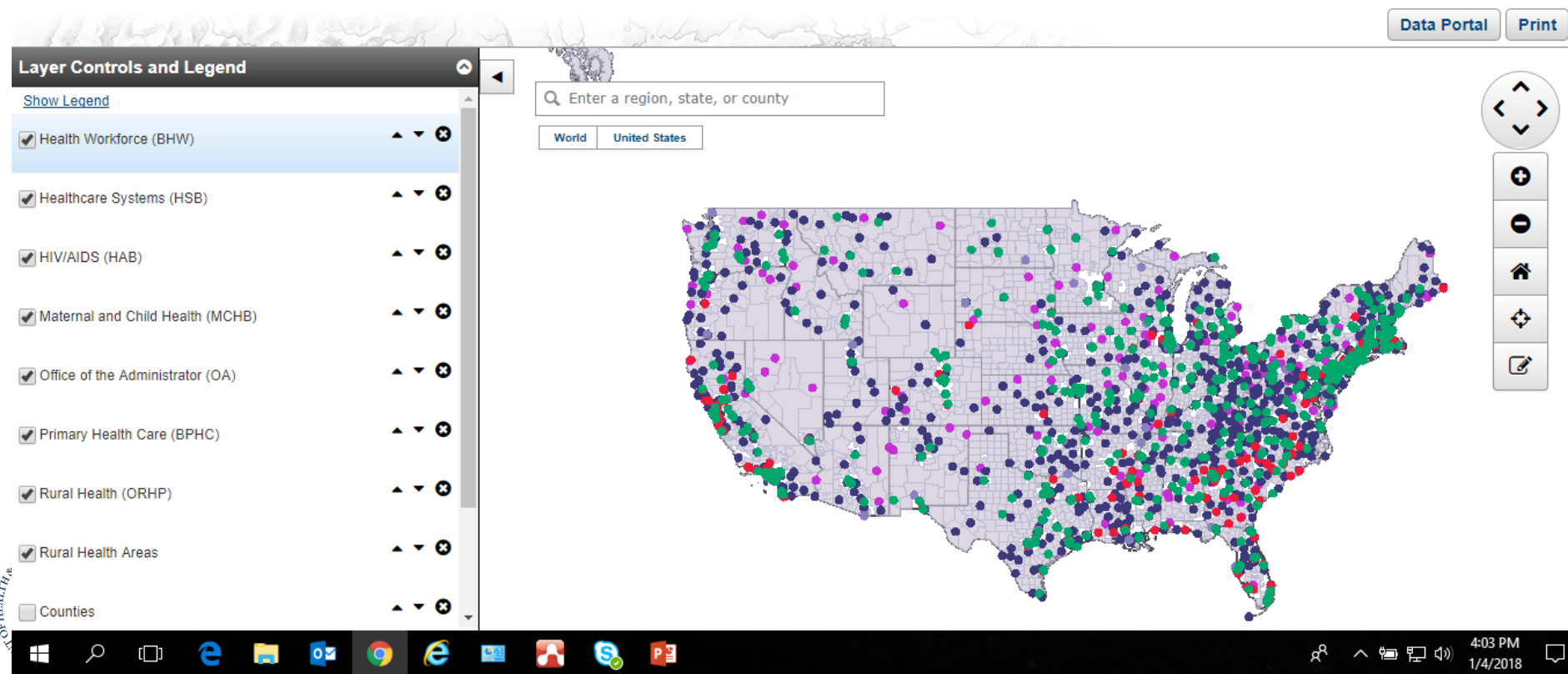
HRSA Data Warehouse (HDW)

One example tool: Quick Maps

- Leverages our powerful GIS mapping technology but provides a simple, easy-to-use starting point

Quick Maps – Rural Health Areas

The Rural Health Areas Quick map displays HRSA active grants by key program area and rural health areas. To view data for a particular geographic area, enter an HHS region, state, or county name in the geo search box. To return to the national view, click on the "X" button in the search box.



HRSA Data Warehouse (HDW)

What you can do with data.hrsa.gov

- Analyze, sort, and filter data on interactive dashboards
- Access preformatted charts, maps, and reports
- See what HRSA is doing in your state, county, region, and congressional district
- View and compare data by geography, by topic, and by HRSA program area
- Download data for research and analysis
- Connect to HRSA data from third party applications through map services and web services
- Create custom maps and reports
- Embed widgets on any website to provide access to HRSA data
- Locate HRSA's health centers and other HRSA-supported programs and services



Contact Information

Bayard Catron

Division of Data and Information Services

Office of Information Technology

Health Resources and Services Administration (HRSA)

We suggest you try data.hrsa.gov today! We welcome your feedback on our new web site and data dashboards. Please get in touch with any comments or questions; email us at data@hrsa.gov.



Site demo and questions

