



# HRSA Update

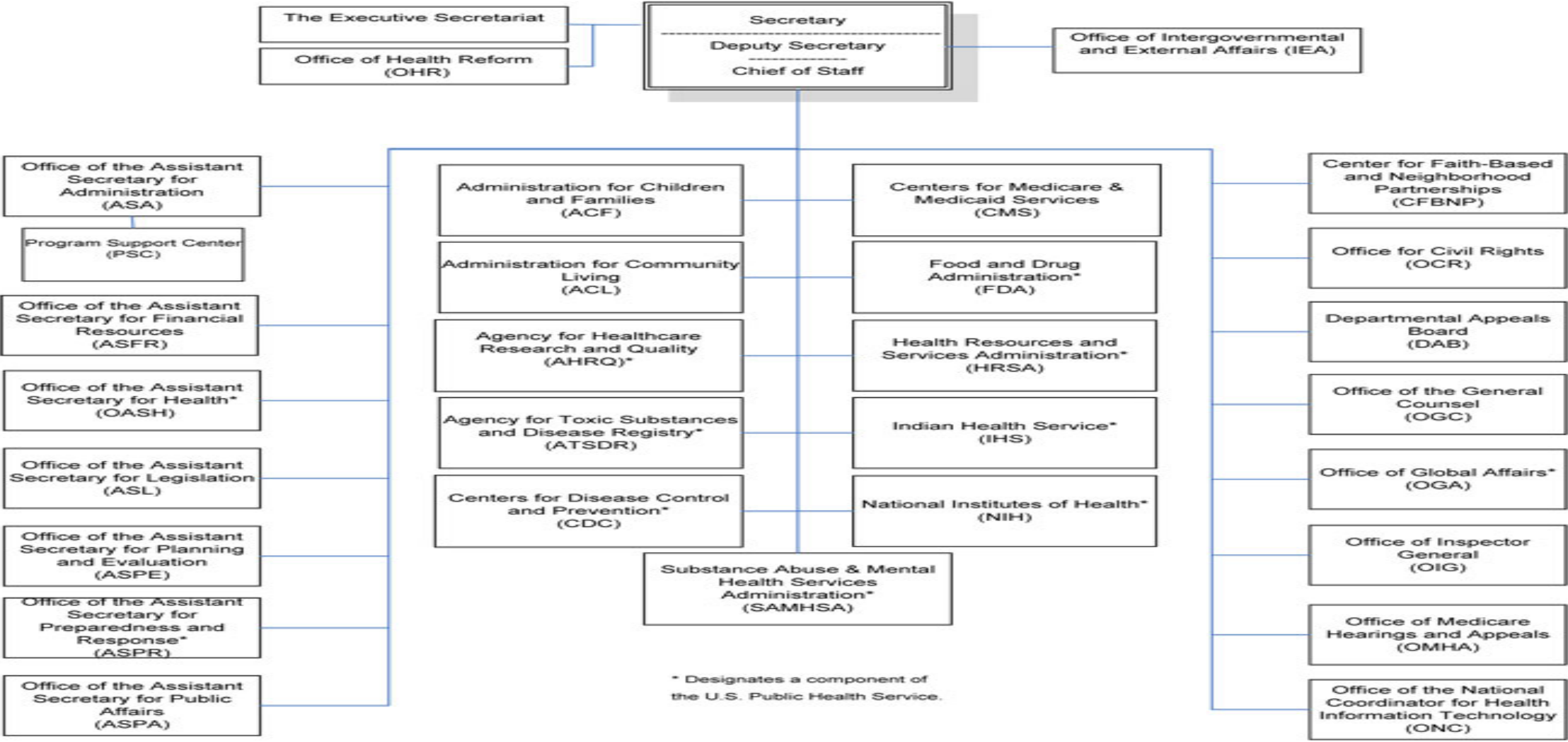
## NOSORH Region A Meeting

### June 12, 2018

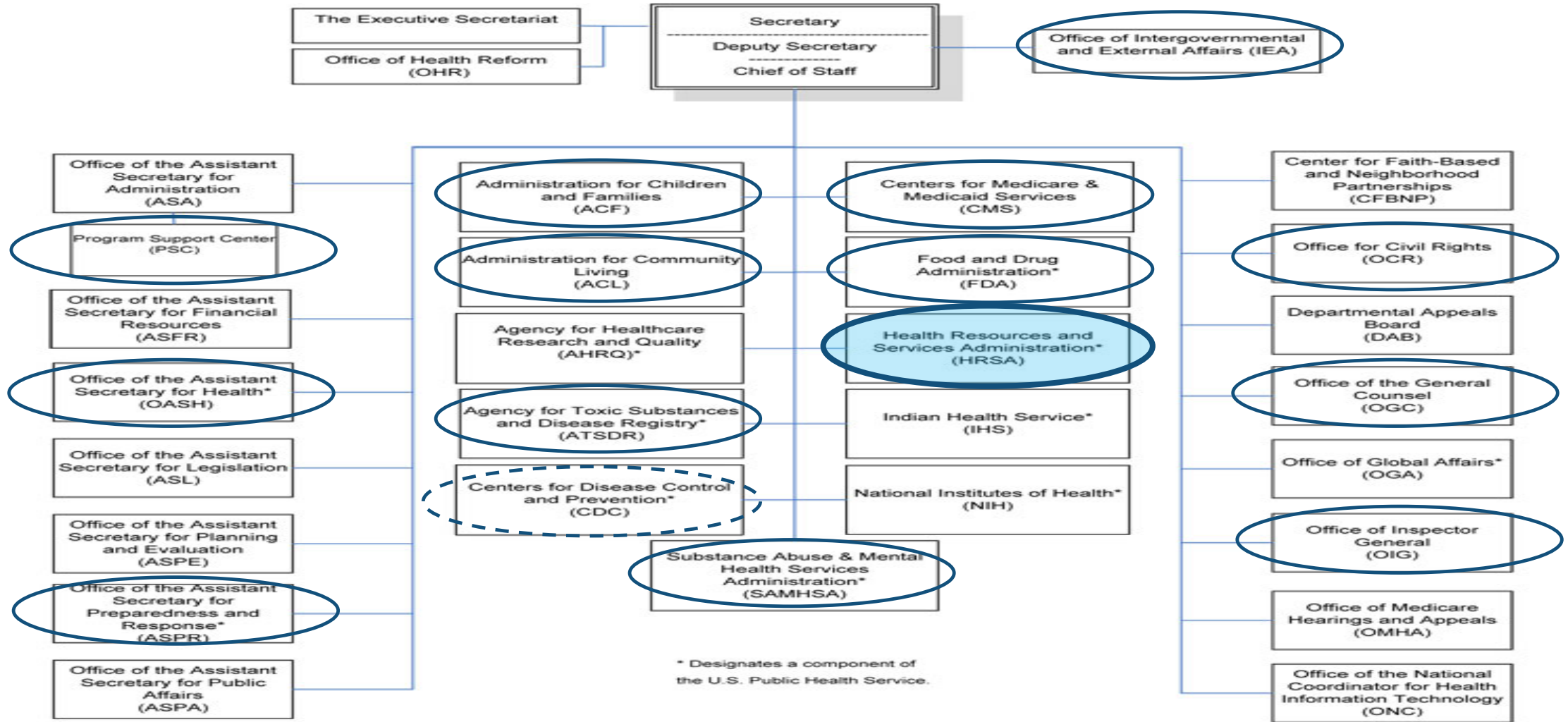
**Rhonda Jackson, MSW**  
**Public Health Analyst**  
**Health Resources and Services Administration (HRSA)**  
**Region 3 - Philadelphia**



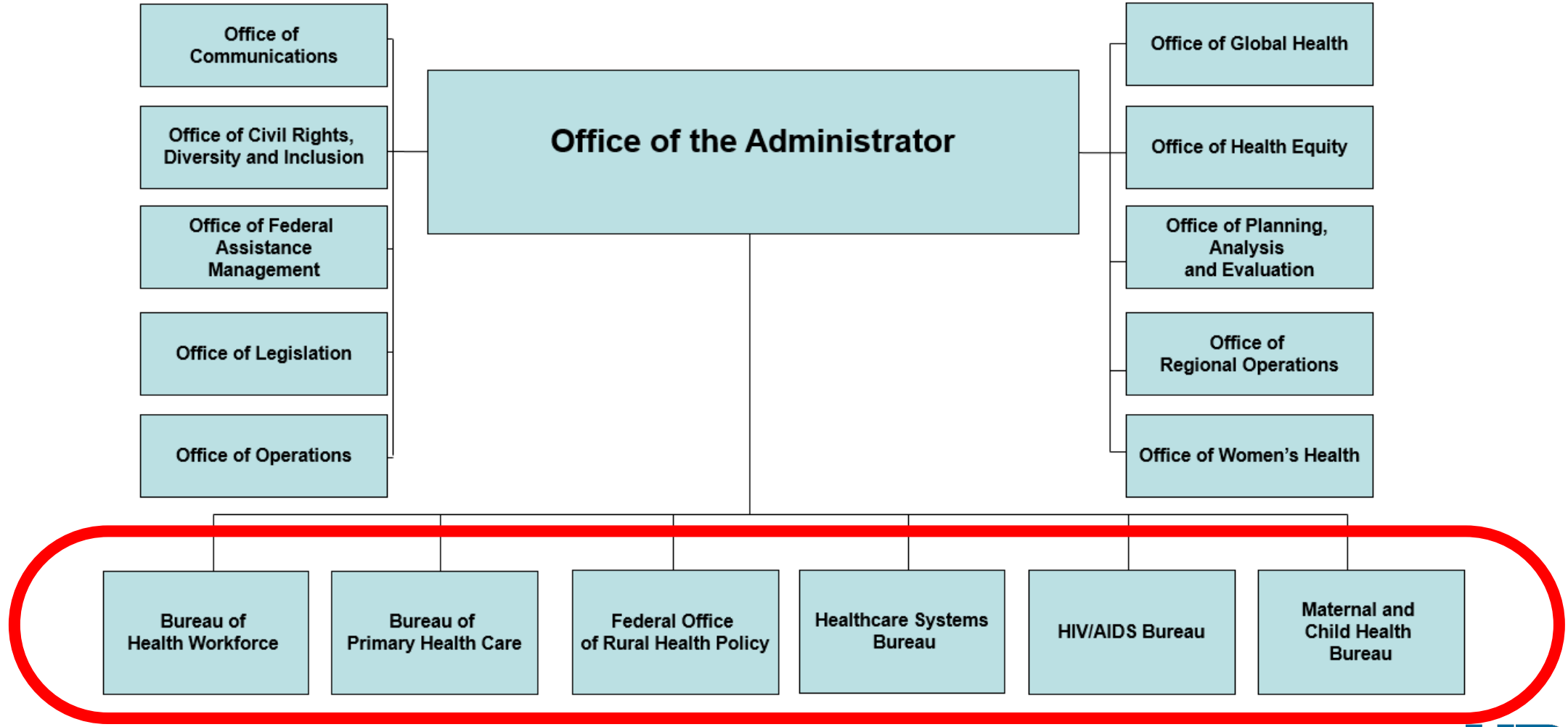
# U.S. Department of Health and Human Services (HHS)



# HHS Presence in Regions



# HRSA Organizational Structure



# Health Resources and Services Administration (HRSA)

## Overview

---

- Supports more than 90 programs that provide health care to people who are geographically isolated, economically or medically challenged
- HRSA does this through grants and cooperative agreements to more than 3,000 awardees, including community and faith-based organizations, colleges and universities, hospitals, state, local, and tribal governments, and private entities
- Every year, HRSA programs serve tens of millions of people, including people living with HIV/AIDS, pregnant women, mothers and their families, and those otherwise unable to access quality health care



# HRSA Funding (dollars in millions)

HRSA Program	FY 2018 Enacted	FY 2019 Request
Primary Health Care	\$5,511	\$5,092
HIV/AIDS	\$2,319	\$2,260
Health Workforce	\$1,516	\$477
Maternal and Child Health	\$1,293	\$1,136
Rural Health	\$291	\$75
Family Planning*	\$286	\$286
Program Management	\$155	\$152
Healthcare Systems	\$112	\$117
Vaccine Injury Compensation	\$9	\$9
<b>TOTAL</b>	<b>\$11,492</b>	<b>\$9,604</b>

\* Administered by the HHS Office of the Assistant Secretary of Health, Office of Population Affairs.



# HRSA In Region 1

Bureau	Grants Awarded in FY2017
Primary Health Care	\$303,199,843
Health Workforce	\$61,010,148
Rural Health	\$7,636,422
Ryan White HIV/AIDS Program	\$92,378,392
Maternal and Child Health	\$88,413,210
Healthcare Systems	\$1,808,066
Office of the Administrator	\$1,036,327
<b>Total</b>	<b>\$555,482,408</b>

Source: HRSA Data Warehouse: Data Portal





## HRSA In Region 2

Bureau	Grants Awarded in FY2017
Primary Health Care	\$471,196,762
Health Workforce	\$55,925,752
Rural Health	\$1,989,824
Ryan White HIV/AIDS Program	\$468,755,551
Maternal and Child Health	\$129,953,063
Healthcare Systems	\$1,723,844
<b>Total</b>	<b>\$1,129,544,796</b>



Source: HRSA Data Warehouse: Data Portal



# HRSA In Region 3

Bureau	Grants Awarded in FY2017
Primary Health Care	\$381,537,527
Health Workforce	\$12,0145,928
Rural Health	\$12,032,903
Ryan White HIV/AIDS Program	\$253,344,869
Maternal and Child Health	\$150,139,998
Healthcare Systems	\$2,822,817
Office of the Administrator	\$2,236,751
<b>Total</b>	<b>\$922,260,793</b>

Source: HRSA Data Warehouse: Data Portal



# HRSA Grants In Regions 1,2 and 3

---

## Examples:

- Behavioral Health Workforce Education and Training Program
- Graduate Psychology Education Programs
- Nursing Workforce Diversity
- Health Center Program
- Ryan White Title IV Women, Infants , Children, Youth and Affected Family Members AIDS Healthcare
- Maternal, Infant and Early Childhood Home Visiting Grant Program
- State Offices of Rural Health
- Rural Health Care Services Outreach Grant Program
- Rural Health Network Development Planning Grant Program
- Geriatrics Workforce Enhancement Program
- Grants to States to Support Oral Health Workforce Activities



# Health Center Program

Nearly **26 million** people – **1 in 12** people across the United States – relies on a HRSA-funded health center for care, including:

**1 IN 3**  
LIVING IN POVERTY



**1 IN 6**  
RURAL RESIDENTS



**1 IN 10**  
CHILDREN IN THE US

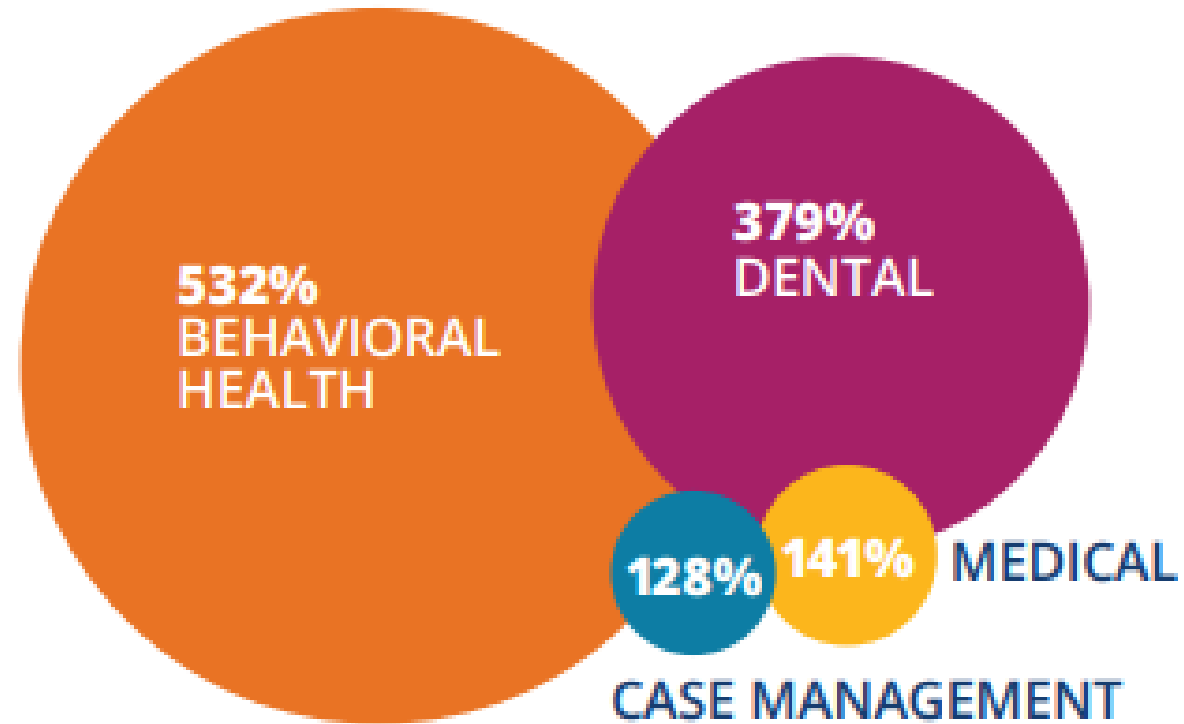


**330,000+**  
VETERANS

\*2016 UDS Data

# HRSA Programs: Primary Care

## Growth in Health Center Visits 2000-2016



Graphic: NACHC. 2018. Rising to the Challenge: Community health centers are making substance use disorder treatment more accessible than ever. [http://www.nachc.org/wp-content/uploads/2018/03/NACHC\\_PI\\_2018\\_WEB\\_v1.pdf](http://www.nachc.org/wp-content/uploads/2018/03/NACHC_PI_2018_WEB_v1.pdf)  
Data Sources: UDS 2000 and 2016



# Ryan White HIV/AIDS Program

---

- Grants to cities, states, and local community-based organizations to provide HIV care and treatment services to low income people living with HIV
- More than half of the people living with diagnosed HIV in the United States—more than 500,00 people—receive services through the Ryan White HIV/AIDS program
- 85% of Ryan White HIV/AIDS Program clients are virally suppressed, up from 70% in 2010, and exceeding the national average\* of 58%

*\*Viral suppression among people  $\geq 13$  years old diagnosed with HIV in 34 states and DC*



# Maternal and Child Health Block Grant

---

- Grants to 59 states and jurisdictions to provide health care and services to nearly 54 million mothers and children in the United States, including:
  - 2/3 of all pregnant women
  - 1/2 of all infants and children
    - including those with special health care needs
- Between 2000 and 2015, the national:
  - Infant mortality rate declined 15%
  - Child mortality rate declined 24%



# Maternal, Infant, and Early Childhood Home Visiting

---

- Grants to states, territories, and tribal entities to support voluntary, evidence-based home visiting services for at-risk pregnant women and parents with young children up to kindergarten entry
- In FY 2016, over 160,000 parents and children nationwide received HRSA-supported home visiting services
- Research shows that home visits improve the lives of children and families by preventing child abuse and neglect, improving maternal and child health, and promoting child development and school readiness





# Rural Health Policy

---

- The Federal Office of Rural Health Policy provides policy support to the Office of the Secretary and supports a number of rural health programs, including rural health networks, black lung clinics, telehealth, and veterans rural health access programs
  - **Telehealth Network Grant Program:** Since 2005, supported 3,100 new or expanded telehealth sites; nearly a 10% increase from 2015 to 2016
  - **Medicare Rural Hospital Flexibility Program:** 96% of Critical Access Hospitals (CAH) reported at least one Medicare Beneficiary Quality Improvement measure and 65% of CAHs showed improvement in at least one quality measure



# Health Care Systems

---

- **Organ Transplantation**

- Currently, over 130 million people are registered to be organ donors—an all time high
- Over 16 million people are registered to be bone marrow donors
- In 2016, HRSA-supported transplantation programs facilitated:
  - 33,600 organ transplants (the highest ever)
  - 6,000 bone marrow and cord blood transplants

- **340B Drug Pricing Program**

- Drug manufacturers provide discounts to eligible entities that meet criteria for serving safety net patients
- Qualified safety net organizations obtain a 25-50% discount on outpatient drugs with sales totaling \$16 billion in 2016



# HRSA Data Warehouse

U. S. Department of Health & Human Services

**HRSA** Health Resources & Services Administration  
Data Warehouse

Enter Keywords    
[Advanced Search](#)

Topic Areas | Tools | **Data** | FAQs & Resources | About HDW | HRSA.gov

Home

**Data Fact Sheets**  
Formatted for printing, the Data Fact Sheets present a breakdown of most HRSA data by Nation, HHS region, state, county, and congressional district.  
[Select a Fact Sheet >>](#)

**Data by Geography**  
Displayed as a data grid, Data by Geography allows users to see both summary and detailed views of HRSA data.  
[Select a Geography >>](#)

**Awarded Grants FY2016**

Based on Funds Awarded  
Lowest \$ Highest \$  
[Text view of data](#)

**Data by Topic**  
Data in the HDW are associated with one or more topic areas such as grants, health professionals, and shortage areas. Select a topic to begin exploring the data.

**Data by Tool**  
Most data in the HDW can be viewed in multiple ways – charts, data tables, maps, and preformatted reports. Select a tool below to begin to explore the data.

**What's New**

- 11/18/2016 - American Community Survey (ACS) (2009-2013) data has been updated with the most recent updates from the U.S. Census Bureau. ACS data is available in the [Data Portal](#), [Map Tool](#), [340B Drug Pricing Program Covered Entities Data Explorer](#) and [Quick Maps](#).
- 08/19/2016 - New Map – Skilled Nursing Facilities and Federal Office of Rural Health Policy (FORHP) Rural Health Areas map displays the distribution of skilled nursing facilities compared to rural health areas across the United States and its territories.
- 08/19/2016 - New Map – Federally Qualified Health Centers (FQHC) and Federal Office of Rural Health Policy (FORHP) Rural Health Areas map displays the distribution of Federal Qualified Health Centers compared to rural health areas across the United States and its territories.

[See all new items >>](#)

**Contact:**  
877-464-4772 (Weekdays, from 8 a.m. to 8 p.m. ET)  
[HRSA Contact Center](#)

**Connect:**

## Tools

### Analyzers

- » [Find Shortage Areas by Address](#)
- » [HPSA by State and County](#)
- » [MUA/P by State and County](#)
- » [Medicare Physician Bonus Payment Eligibility](#)
- » [Medicare Telehealth Payment Eligibility](#)
- » [Rural Health Grants Eligibility](#)

### Charts

- » [Chart Gallery](#)

### Data by Geography

### Data Portal

### Find Grants

### HRSA Fact Sheets

### Locators

- » [Find a Health Center](#)
- » [Find a Migrant and Seasonal Head Start Center](#)
- » [Find Health Center Controlled Networks](#)
- » [Find Organ Procurement Organizations and Organ Transplant Programs](#)
- » [Find Ryan White HIV/AIDS Medical Providers](#)

### Maps

<http://datawarehouse.hrsa.gov>



[Home](#) > [Tools](#) > Map Tool

## Map Tool

Have questions about the how to use the Map Tool? See the new [Map Tool FAQs](#).

**New Feature – Custom Data Upload:** Add custom data to display on the map. Upload data from a .csv file – click on the "Custom Data Upload" section below for instructions.

[Data Portal](#) [Print](#) [Help](#)

### HRSA Data

- [Health Center Service Delivery and Look-Alike Sites](#)
- [Health Workforce](#)
- [National Health Service Corps \(NHSC\)](#)
- [Organ Donation and Transplantation](#)
- [Primary Care Service Areas \(PCSAs\)](#)
- [Rural Health](#)
- [Scholarships and Loans – NURSE Corps](#)
- [Shortage Areas](#)

### HRSA Grants

- [Demographics](#)
- [Other Data](#)
- [Upload Custom Data](#)
- [Layer Controls and Legend](#)
- [Base Map and Boundaries](#)

Find a place

World United States

Scale: 1000km / 600mi

The map displays the United States with state and city labels. Navigation controls include a search bar, a 'Find a place' input, a 'World/United States' selector, a compass, zoom in (+) and zoom out (-) buttons, a home button, a full-screen button, and a print button. A scale bar at the bottom left shows 1000km and 600mi. An inset map at the bottom right shows the location of the current view within the Western Hemisphere.





# Tracking Spending - Increasing Accountability (TAGGS)

Tuesday, March 14, 2017

 **TAGGS**  
Tracking Spending - Increasing Accountability

[HOME](#) Welcome | [ABOUT](#) Who We Are | [SEARCH](#) Explore TAGGS | [REPORTS](#) The Rundown | [DATA SUBMISSION](#) Submission Status | [CONTACT](#) Talk To Us



**TRACKING ACCOUNTABILITY IN GOVERNMENT GRANTS SYSTEM**  
Providing accessibility and accountability for government grants since 1995  
[Learn More](#)

[Award Search](#) | [Recipient Search](#) | [Site Search](#) | [Advanced Search](#)



- Annual Reports
- Top 50 Awards
- Top 50 Recipients
- Top 50 Institutions
- Top 50 International
- Top 50 Research



<https://taggs.hhs.gov/>



# HRSA Resources:

---

## HRSA and Behavioral Health:

➤ <https://www.hrsa.gov/behavioral-health>

## HRSA and the Opioid Crisis:

➤ <https://www.hrsa.gov/opioids/>

# HRSA Programs: Training, Consultation, and Technical Assistance

---

## Available Nationally:

- SAMHSA-HRSA Center for Integrated Health Solutions
  - <https://www.integration.samhsa.gov/>
  - Free 1-hour Integration Consultation by contacting [integration@thenationalcouncil.org](mailto:integration@thenationalcouncil.org) or calling 202-684-7457
- National Clinician Consultation Center (CCC)
  - <http://nccc.ucsf.edu/>
  - Substance Use Warmline at (855) 300-3595
  - Consultation is available Monday through Friday, between 10 a.m. and 6 p.m EST, from addiction medicine-certified physicians, clinical pharmacists, and nurses with special expertise in pharmacotherapy options for opioid use





# Request for Information: Administrative Streamlining and Burden Reduction

---

- The Health Resources and Services Administration (HRSA) seeks feedback for its ongoing work to reduce public and stakeholder burden. Comments are open to the public and encouraged for entities significantly affected by HRSA regulations and policy, including state, local and Tribal governments, health care providers, small businesses, consumers, non-governmental organizations and trade associations : <https://www.hrsa.gov/about/news/press-releases/rfi-administrative-streamlining-burden-reduction>
- Comments Due July 2, 2018



# ORO Rural Health Collaborations - Region 1

---

## **New England Rural Health RoundTable Conference**



# ORO Rural Health Collaborations - Region 2

---

**New York State  
Association for  
Rural Health**

**New Jersey  
Rural Health  
Conference**

**Telehealth**

**Tribal Nations**



# ORO Rural Health Collaborations - Region 3

---

**Training and Technical  
Assistance  
Collaborative**

**Regional Rural Focused  
Conferences/Meetings**

**Grants Outreach and  
Education**



# Office of Regional Operations Network



## ORO STAKEHOLDERS

- HRSA Grantees
- State Leadership
- Tribal Organizations
- Community & Faith-Based Organizations
- Colleges/Universities
- Private Sector Organizations & Foundations
- HHS Regional Directors/Regional Health Administrators
- HHS Operating Divisions
- Federal Departments or Agencies

## When should you contact ORO?

- When you would like to connect with HRSA or HHS programs
- When you have questions about HRSA or HHS programs, data, policies, or resources
- When you are looking for a new type of partner or resource (including funding opportunities)
- When you would like HRSA representation at a meeting or event
- Simply to connect!