



Appalachian Regional Commission

Eric Stockton
Health Program Manager
estockton@arc.gov

Appalachian Regional Commission



ARC VISION STATEMENT

Appalachia is a region of great opportunity that will achieve socioeconomic parity with the nation

ARC MISSION STATEMENT

To innovate, partner and invest to build community capacity and strengthen economic growth in Appalachia

What does ARC do?



CREATE ECONOMIC OPPORTUNITIES



DEVELOP A READY WORKFORCE



BUILD CRITICAL INFRASTRUCTURE



CULTIVATE NATURAL AND CULTURAL ASSETS



FOSTER LEADERSHIP AND COMMUNITY CAPACITY

Appalachian Region



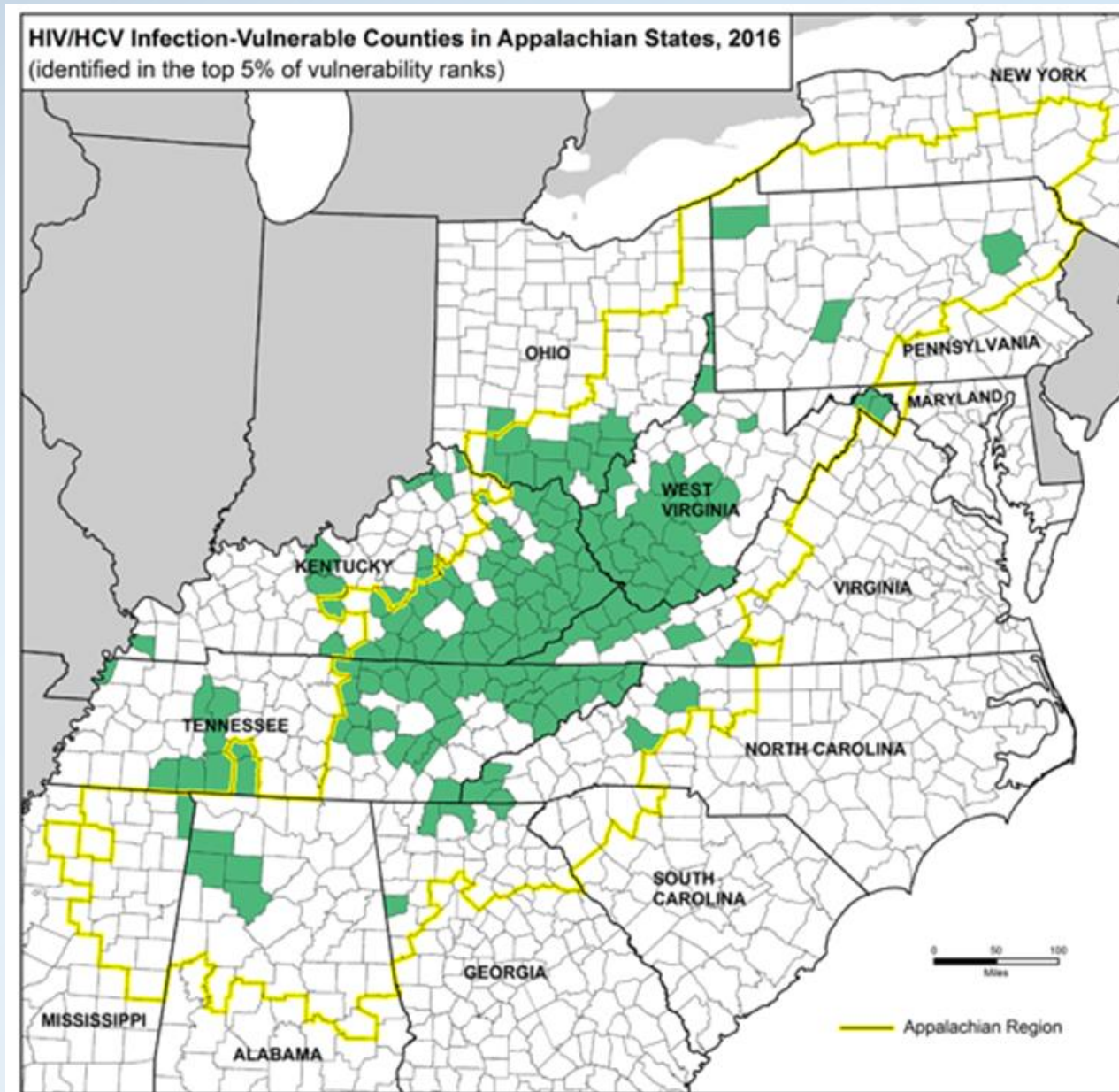
- 13 states
- 420 counties
- 205,000 square miles
- 25 million people
- 73 local development districts

ARC + RCORP

140 of targeted counties are in the ARC region.

159 of 220 are in ARC states.

(No exclusive eligibility or funding preference for these counties).



ARC Health Program

Healthcare Infrastructure Grants

- Healthcare enterprise development
- Healthcare workforce training
- Healthcare facilities: Construction, telecom, telehealth
- Cross-sector collaboration: health + substance abuse + community development
- Special interest in re-entry: training, entrepreneurship



ARC Funding Resources

Activities could be eligible for ARC funding:

- Area Development grantmaking: partnerships with state Governors
- POWER investments targeting coal impacted communities
www.arc.gov/power
- Re: ARC and matching funds

ARC Health Program

Technical Assistance

- Facilitate regional connections
- Consultations
- Project development and application guidance
- J-1 Visa waivers

Research and Data

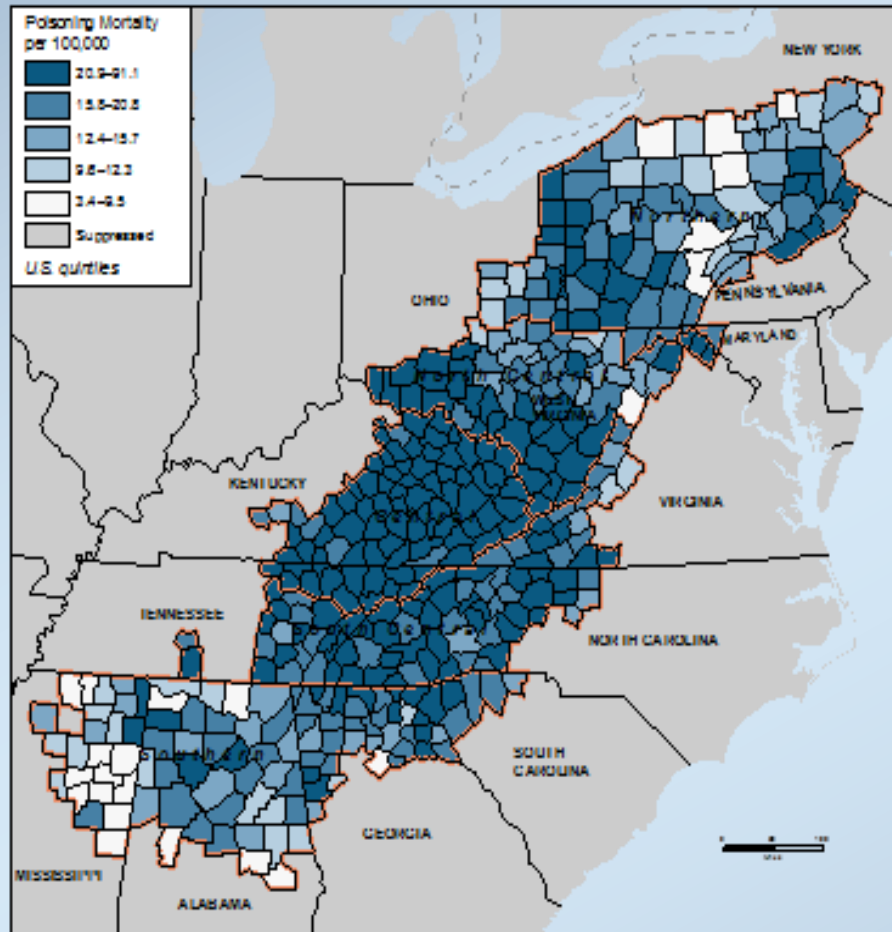
- Research
- Visualizations
- Case Studies

ARC Research Resources

Health Disparities in Appalachia

www.arc.gov/healthdisparities

Poisoning Mortality Rates per 100,000 Population in the Appalachian Region, 2008–2014



- 41 indicators: morbidity, behavior, social determinants etc.
- Mortality rates for 7 of 10 leading causes of death including injury
- Self-reported mental health, supply of healthcare workforce including primary care and mental health

ARC Research Resources

Health Disparities in Appalachia
www.arc.gov/healthdisparities

Coming soon!!!

- New mapping and report tool for custom overlays: health and socioeconomic data
→ Compare counties, subregion, states etc.
- To be published late July

ARC Research Resources

Coming soon!!!

- ***Identifying Bright Spots in Appalachian Health***
 - Analyzes 19 health outcomes in 420 counties
 - Better-than-expected outcomes = Bright Spots
 - 10 case studies examine local perspectives



Eric Stockton
estockton@arc.gov

Appalachian
Regional Commission
www.arc.gov