

BUILDING EMS CAPACITY

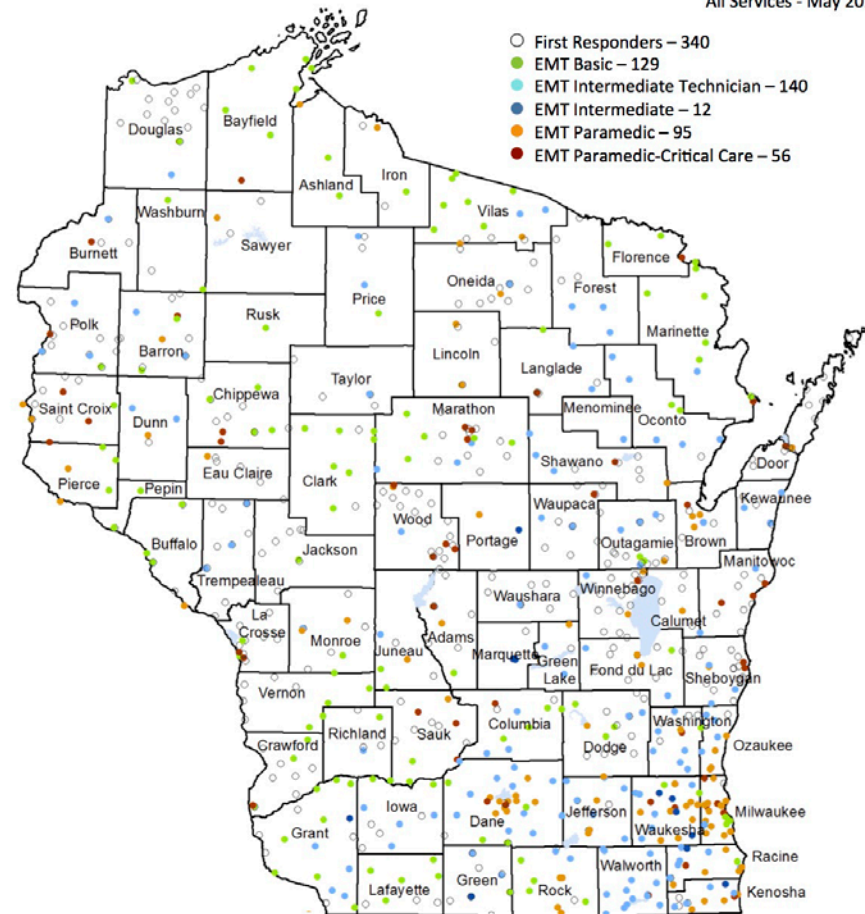
From Assessment to Action

IDENTIFY

- Get service list
- Categorize
 - Rural
 - Volunteer vs Paid
 - Level of Service
- Map

Wisconsin Emergency Medical Service Providers

All Services - May 2015



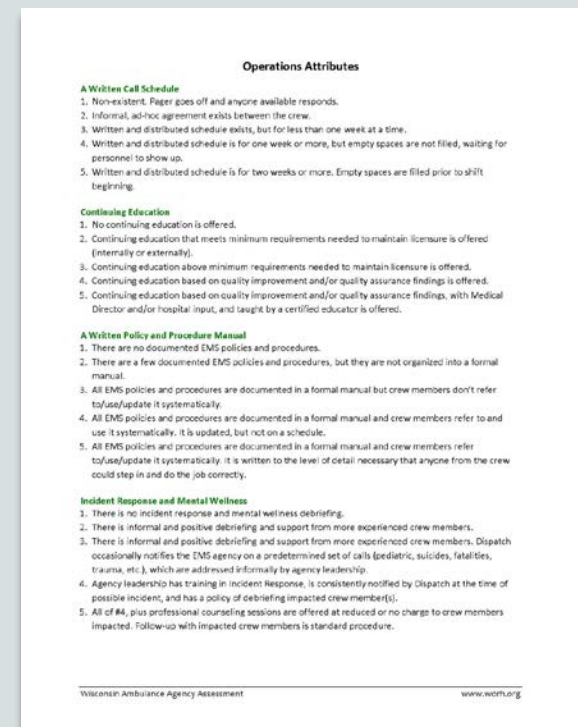
For more information about Wisconsin EMS, visit <https://www.dhs.wisconsin.gov/ems/>

EMS provider locations: <https://www.dhs.wisconsin.gov/ems/index.htm>

ASSESS

- Utilize existing assessments
- Require location
 - To slice data by...
- Provide resources for improvement
- Free assessment & workbook:

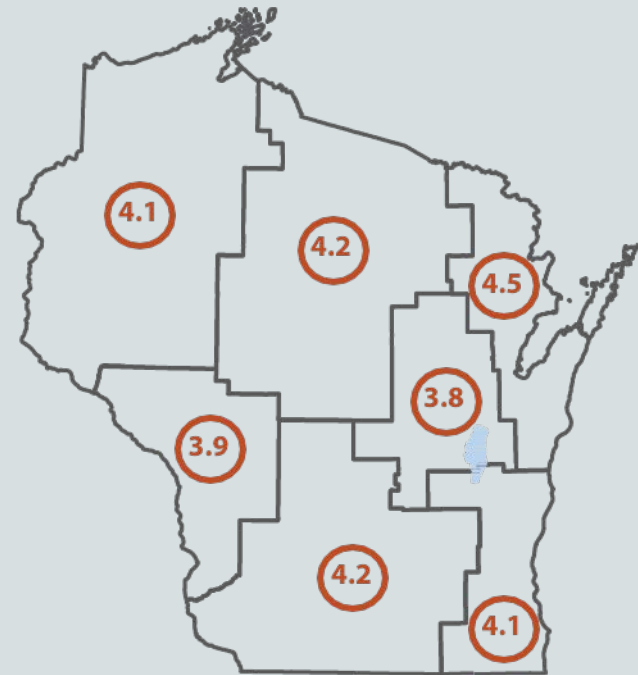
<http://worh.org/attributes-successful-rural-ambulance-service>



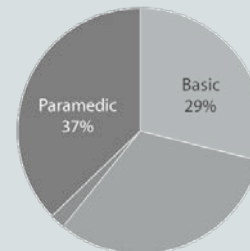
ANALYZE

- Priority Issues
- Performance cohorts
- Hot spots?

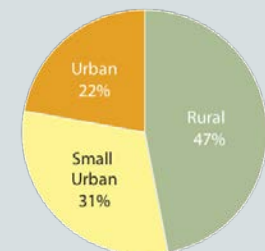
AVERAGE PERFORMANCE SCORES BY HCC REGION



Respondent Agencies by License Level

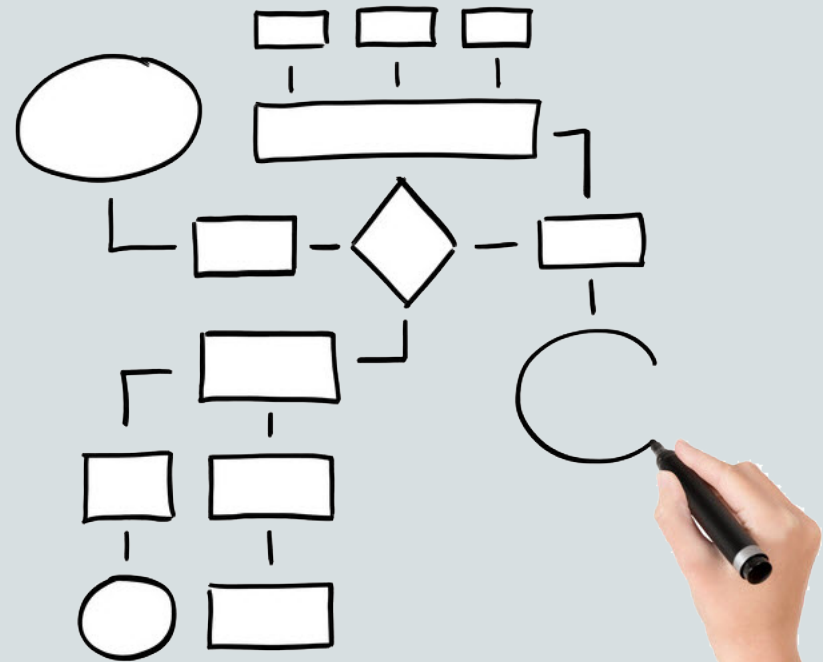


Respondent Agencies by Rurality



STUDY

- Causes of priority issues
- Obstacles to improvement
- System dependencies
- Allies
- National/State models



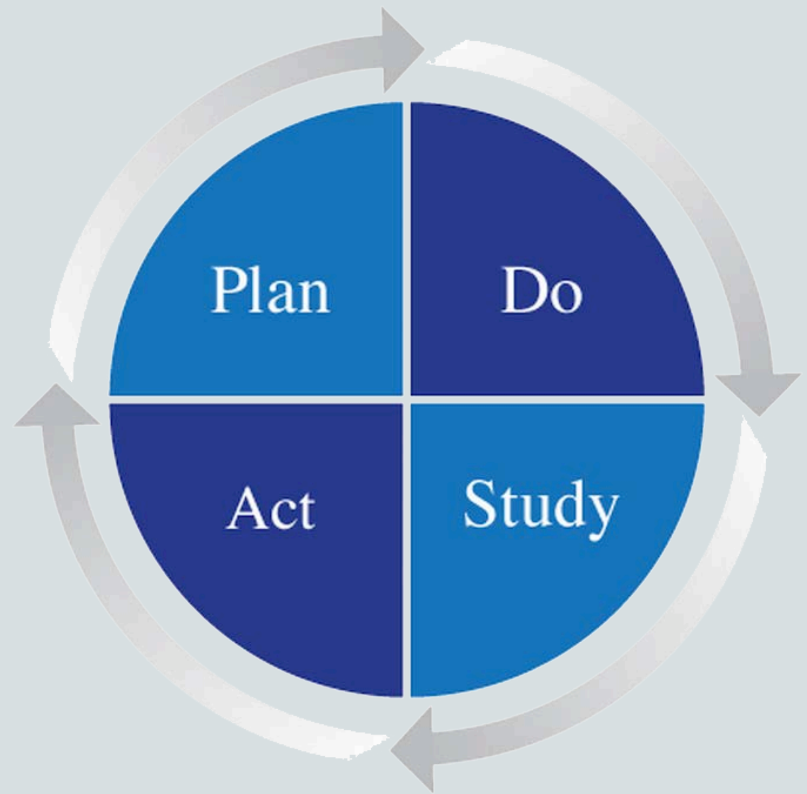
ACT

- Convene allies
 - Steal national ideas
 - Pilot → Document for sharing
 - Market / Promote results
 - Advocate for change
 - Assist legislation



ASSESS

...and back to
the beginning!



THANKS!

John Eich, Director

WI Office of Rural Health

eich@wisc.edu