

Re-imagining Health Care in Nevada's Rural And Underserved Communities: Project ECHO Nevada



Evan M. Klass, MD
Associate Dean, Statewide Initiatives
University of Nevada, Reno School of Medicine

THE TRANSFORMATIVE MODEL IN MEDICAL EDUCATION AND CARE DELIVERY



University of Nevada School of Medicine
PROJECTECHO
CONNECTING NEVADA'S COMMUNITIES TO SPECIALTY CARE

Project ECHO® (Extension for Community Healthcare Outcomes) helps democratize medical knowledge and develops specialty care capacity in underserved communities.

Using a revolutionary model of telementoring, collaborative medical education and care management, Project ECHO empowers front-line primary care professionals to provide the right care, in the right place, at the right time.



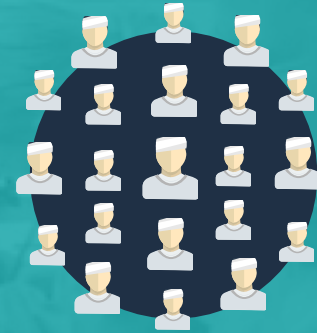
HIGH IMPACT OUTCOMES



ECHO HUB
Team of Specialists



ECHO SPOKE
Providers



PATIENT REACH

“One to Many” – Leveraging a proven model to significantly increase access to specialty care for common complex conditions

Hubs & Spokes - ECHO provides front-line providers with the knowledge and support they need to care for complicated patients they would otherwise refer out. ECHO links expert specialist teams at an academic ‘hub’ with primary care providers in local communities – the ‘spokes’ of the model.

Together, they participate in teleECHO™ clinics, which are like virtual clinical rounds, combining patient case presentations with didactic learning and mentoring.

How is the ECHO model™ different from traditional telemedicine?



The ECHO model is not 'traditional telemedicine' where the specialist assumes care of the patient, but instead a guided practice model where the primary care provider retains responsibility for managing the patient.

During a teleECHO™ clinic, using multi-point video technology, primary care providers in multiple locations present patient cases to a multidisciplinary team of specialists to determine treatment.

These specialists serve as mentors, training community providers to provide care in clinical areas that were previously outside their expertise. Over time the primary care providers operate with increased independence as their skills and self-efficacy grow.

WHY ECHO?

THE UNDERSERVED PATIENTS



PROBLEM:

Underserved patients have limited access to quality specialist care for common complex conditions.

SOLUTION:

A model that expands access to care by leveraging telementoring and guided practice to build system capacity by empowering primary care providers to care for complex conditions at their local clinic.

WHY ECHO? THE PROVIDER



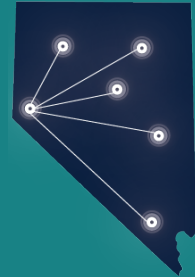
PROBLEM:

- Want to advance their skills, career and professional relationships.
- Lack access to knowledge and training to provide specialty care for their patients.
- Often feel socially and professionally isolated.

SOLUTION:

- Providers engage in a community with like-minded fellow providers and specialists from academic centers.
- Develop specialized knowledge.
- Provide specialty care for common complex conditions.
- Receive free CME/CE credits.

Health Care Facilities in Nevada Participating in ECHO Clinics: 43 Sites



CME/CE Credits Issued:
More than **1000** CME/CE credits issued.

WHY ECHO?

Rural Health Facility



PROBLEM:

- Limited ability to provide specialty care for common complex conditions.
- Difficulties recruiting and retaining community providers.

SOLUTION:

Primary care providers acquire new skills and competencies, expanding access to care. They become part of a community of learners, increasing their professional satisfaction while their feelings of professional isolation decrease.

Through ECHO, rural clinics have a way to expand access to care for complex chronic conditions and serve more patients, while keeping treatment dollars in the community. They also acquire a new tool for recruiting and retaining providers.

Many ECHO Models are now researching the impact of the clinics and clinical learning on QI initiatives. The preliminary research is promising.



HOW IT WORKS

ECHO connects providers with specialists through ongoing, interactive, telementoring sessions.

ECHO creates ongoing knowledge networks by linking primary care providers at numerous locations with an inter-disciplinary team of expert sub-specialists, to mentor them to treat their patient cases. These specialist teams use low-cost, multi-point videoconferencing technology to conduct weekly teleECHO clinics with community providers. Specialists serve as mentors, training community providers to provide care in clinical areas that previously were outside their expertise.



FOR PROVIDERS

How to get started:

1. Connect with ECHO-Nevada
2. Schedule a quick call with an Chris Marchand 775-682-8476.
3. Join a teleECHO clinic that suites your needs.

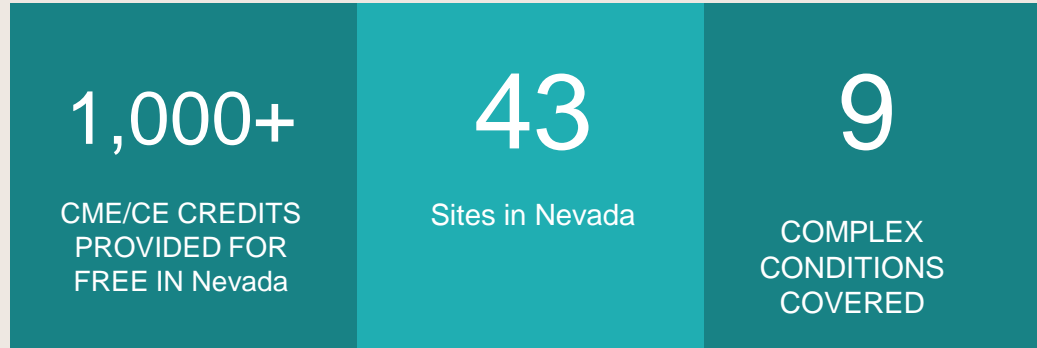
Once you connect, you will be able to:

- Gain experience in treating patients with common but complex conditions
- Gain access to current best practices
- Treat your patients in the community, closer to home
- Share knowledge with others

Contact us cmarchand@medicine.nevada.edu

THE IMPACT

Replication of the ECHO model is achieved through the creation of ECHO 'hubs' or regional centers, in which partner sites or 'spokes' connect via low cost video conferencing through teleECHO clinics. With ongoing mentoring, these spokes gain specialty expertise and knowledge. Since its initial expansion, the ECHO model has been successfully replicated across the United States and around the globe.



Benefits of ECHO

For the healthcare system at large, the benefits from ECHO are enormous:

1. Better access for rural and underserved patients
2. Reduced disparities
3. Better quality and safety
4. Rapid dissemination of best practices
5. Reduced variations in care
6. Greater efficiency
7. Reduced wait times

Recognition for Project ECHO

Awarded over 20 major grants since 2003 from government agencies and private foundations, including the U.S. Agency for Healthcare Research and Quality, Department of Health and Human Services, Department of Defense, Department of Veterans Affairs, the New Mexico Legislature, the Robert Wood Johnson Foundation, the Leona M. & Harry B. Helmsley Charitable Trust, and the GE Foundation among others.

Wide-ranging media coverage in outlets including the New York Times, Forbes, the Huffington Post, Discovery Channel and PBS.

Accomplishments of ECHO have been recognized by the Teresa Heinz and the Heinz Family Foundation, American Telemedicine Association, and the Distance Learning from the United States Distance Learning Association.





University of Nevada School of Medicine
PROJECT ECHO
CONNECTING NEVADA'S COMMUNITIES TO SPECIALTY CARE



WANT TO BE PART OF ECHO?

Contact us: eklass@medicine.nevada.edu

Visit: www.medicine.nevada.edu/echo