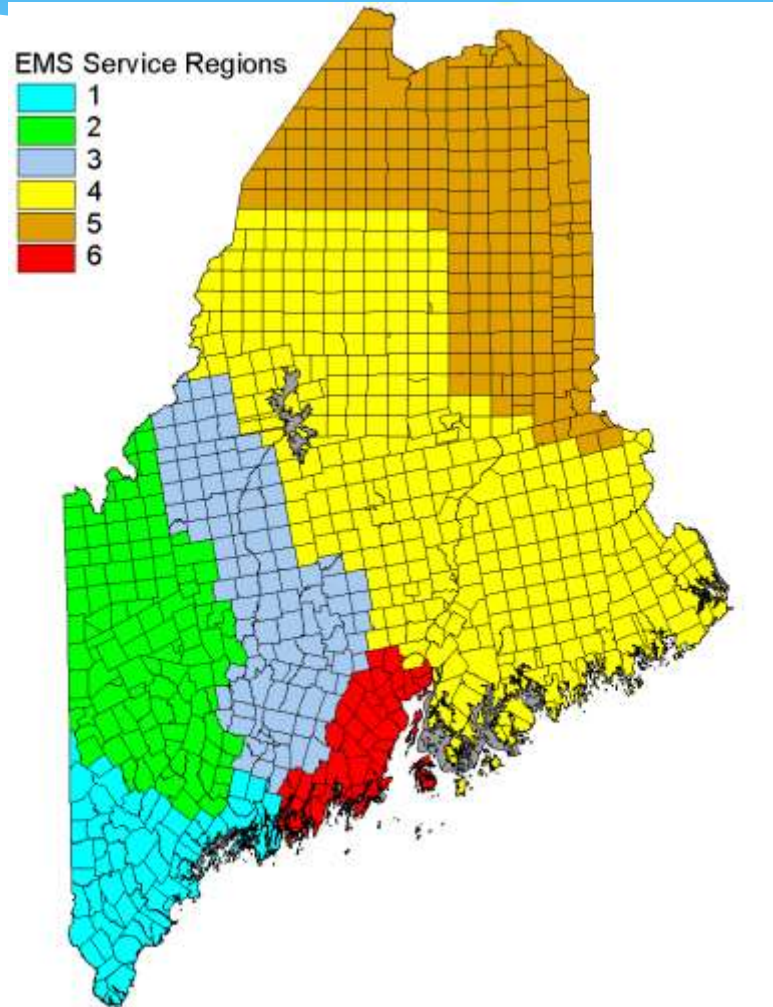


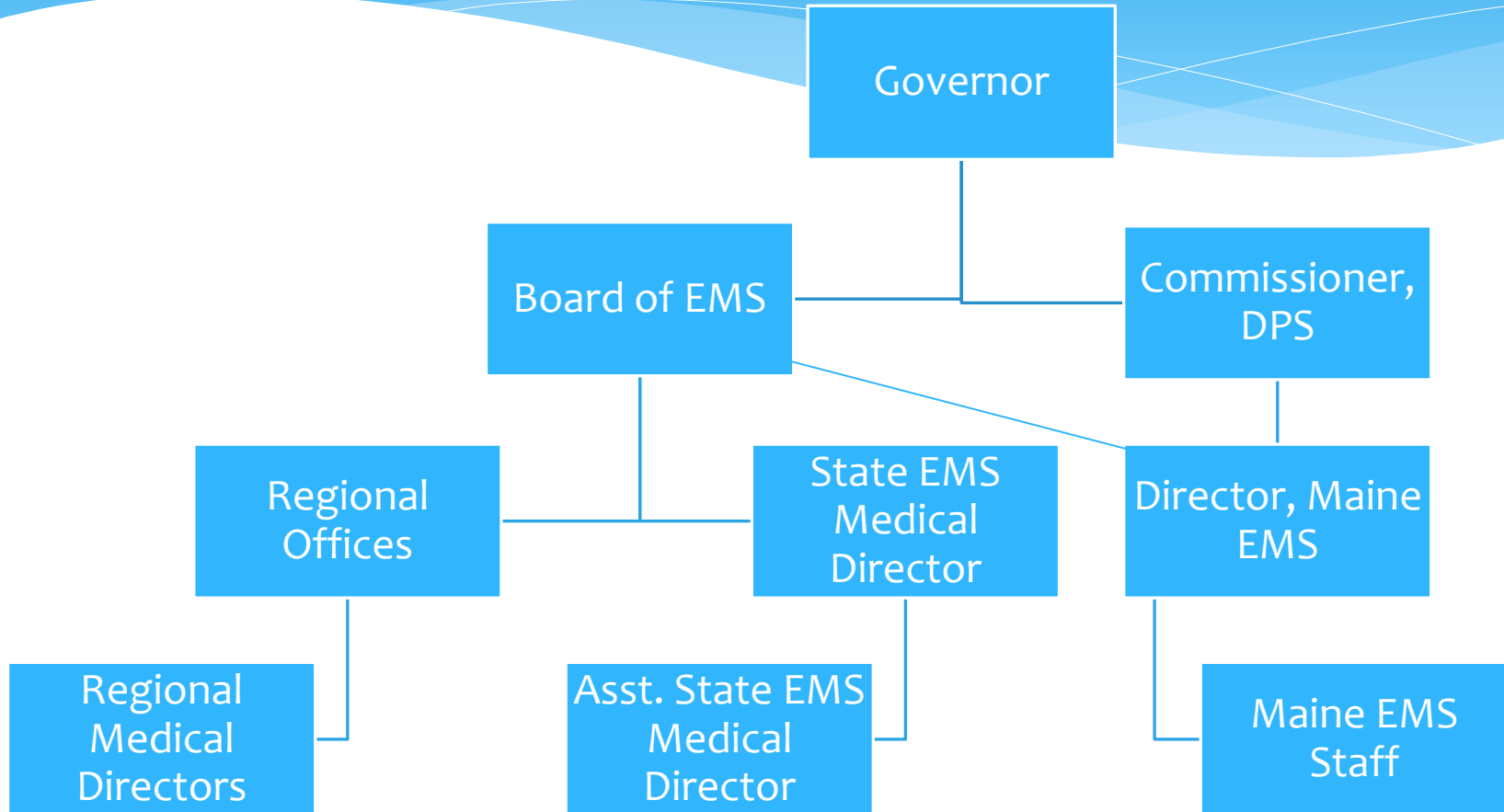
Maine EMS Medical Direction: A Work in Progress

Jay Bradshaw,
Director (retired) Maine EMS

Maine EMS regions



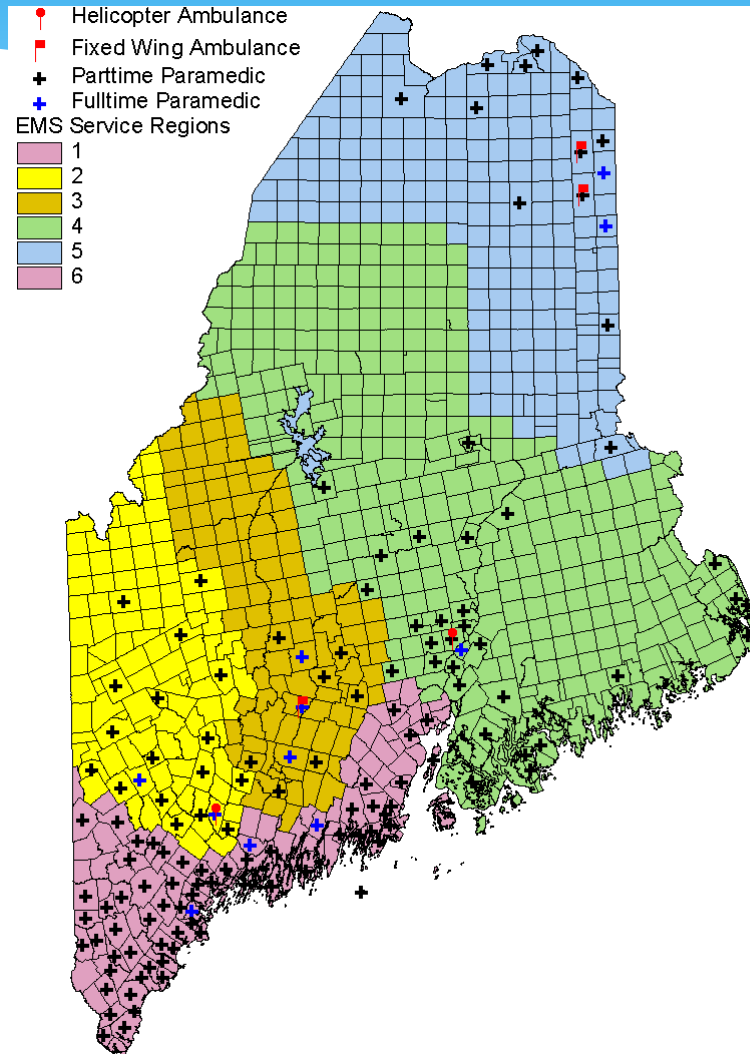
Maine EMS system



Demographics

- * ~ 6,000 providers (including 500 EMD)
- * ~ 300k calls/yr (70% emergency response)
- * 273 services
 - * 65% ALS (Advanced EMT or Paramedic)
 - * 77% (211) < 1,000/yr
 - * 32% (88) <100/yr
- * 60-70% volunteer
- * Service administrators
 - * Turnover
 - * Lack of EMS administrative/health care experience

ALS services



What to do?



Be resourceful



Medical Direction & Practices Board

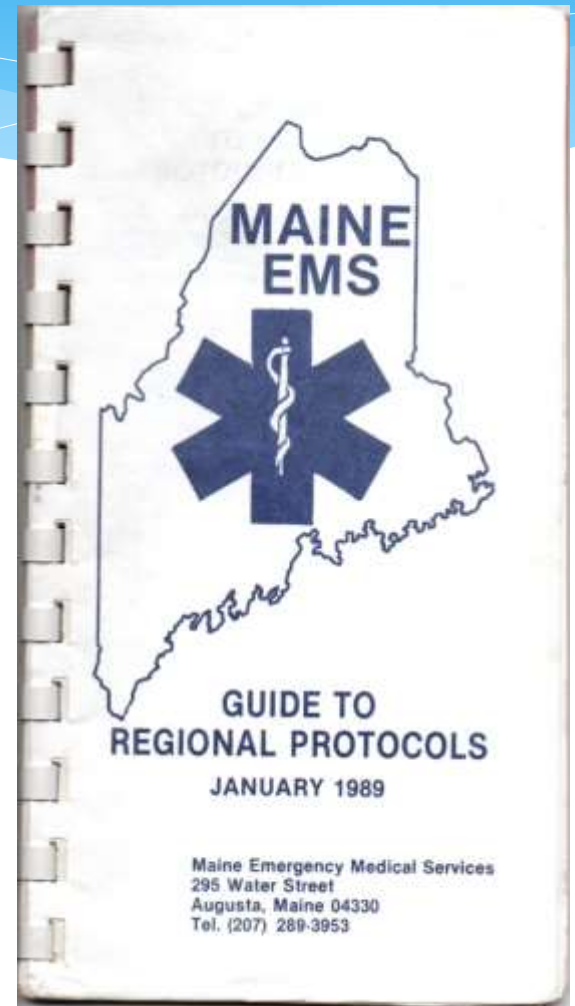
- * State EMS Medical Director
- * Asst. State EMS Medical Director
- * Regional Medical Directors (6)
- * Maine ACEP
- * At-Large Emergency Physician
- * Pharmacist or Toxicologist

Service Medical Directors

- * Regional EMS
- * ED
- * PCP
- * NP/PA

E Pluribus Unum

- * Pre-1989: 7+ versions
- * Statewide “Guide to Regional Protocols”
- * Single protocol by handshake
- * Statute change – MDPB must approve protocols



Why statewide protocols?

- * Protocols built on literature and statewide data
- * Cross service/region training opportunities
- * Statewide Data
- * Statewide QI

Dirigo

2013 - Apps for Android
and iOS



New England EMS Protocols

- * Medical Directors @ NECEMS
- * Pediatric Evidence-based Guidelines: Assessment of EMS Utilization in States (PEGASUS)
- * 14.2 million people (2010 census)
 - * Test Evidence Based Guidelines process
 - * Efficiency in protocol development
 - * Efficiency in data collection
 - * Efficiency in education

Service Medical Directors

- * Paramedic Interfacility Transfer
- * Community Paramedicine Pilot Projects
- * In progress: Interfacility Transfer Guidelines (BLS, ALS, vents)

Challenges

- * Rural paradox
- * Locum tenens not familiar with Maine EMS system
- * Services understanding role of local medical director
 - * Part time/volunteer service chiefs
 - * Need for EMS management training
- * Availability of medical directors (MD, DO, NP, PA)
- * Training for local medical directors

Not just for ED docs

- * MD/DO/NP/PA
- * Local clinic PCP
- * Just about any specialty
- * Performance Improvement
 - * Trending and Benchmarking
 - * Providing education related to issue
 - * Reassessing

What's the plan?

- * NAEMSP Medical Director Course (2009)
- * Medical Director Guidebook (May 2016)
- * Medical Director Training (Fall 2016?)



Medical Director's Guidebook

2016

Thoughts/questions/ideas?

Maine EMS

E-mail: maine.ems@maine.gov

maine.gov/ems (Publications tab)

Maine EMS Medical Director

J. Matthew Sholl, MD, MPH, FACEP

shollm@me.com

jay.bradshaw@twc.com