

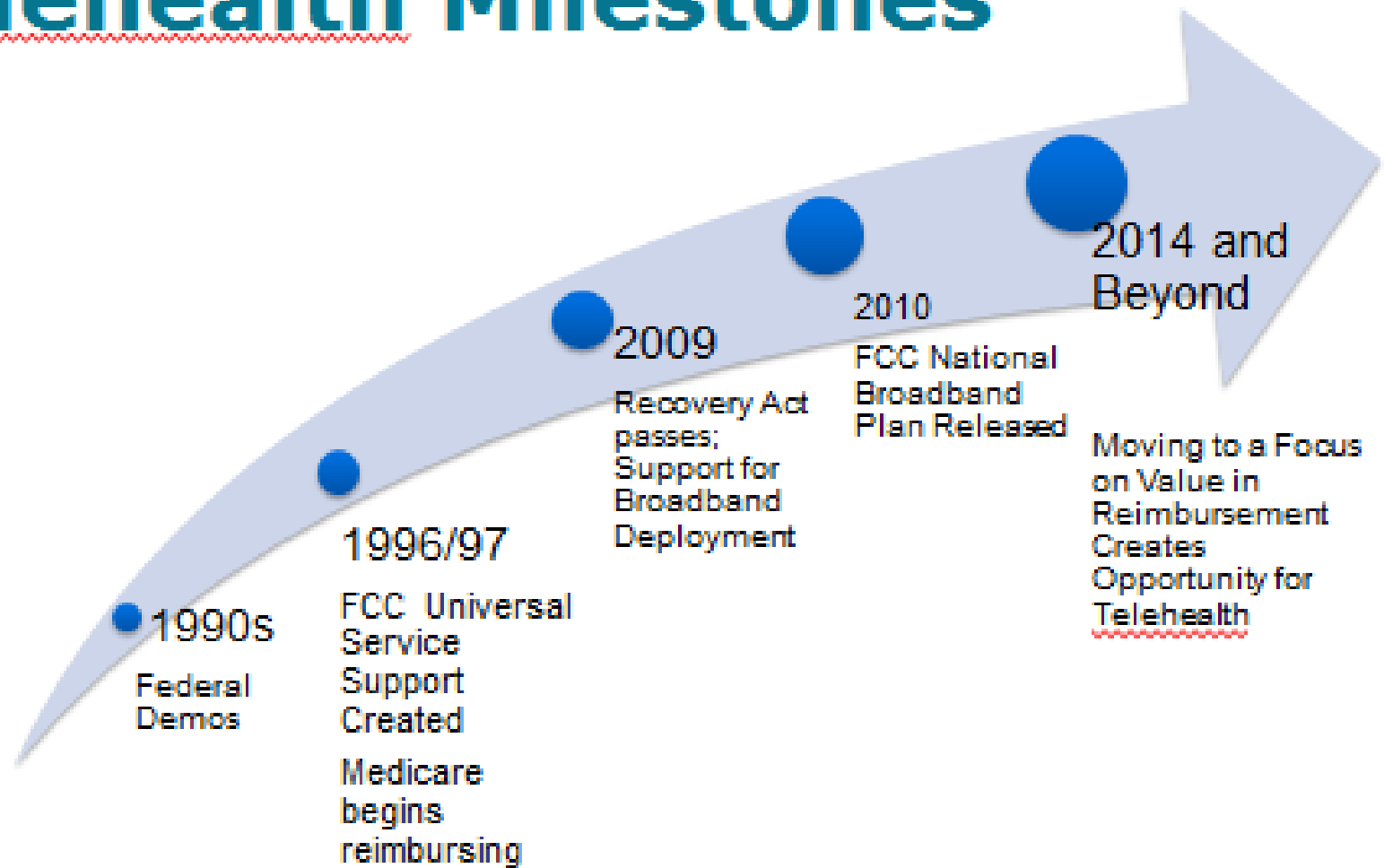
# Office for the Advancement of Telehealth (OAT)

## **Mission**

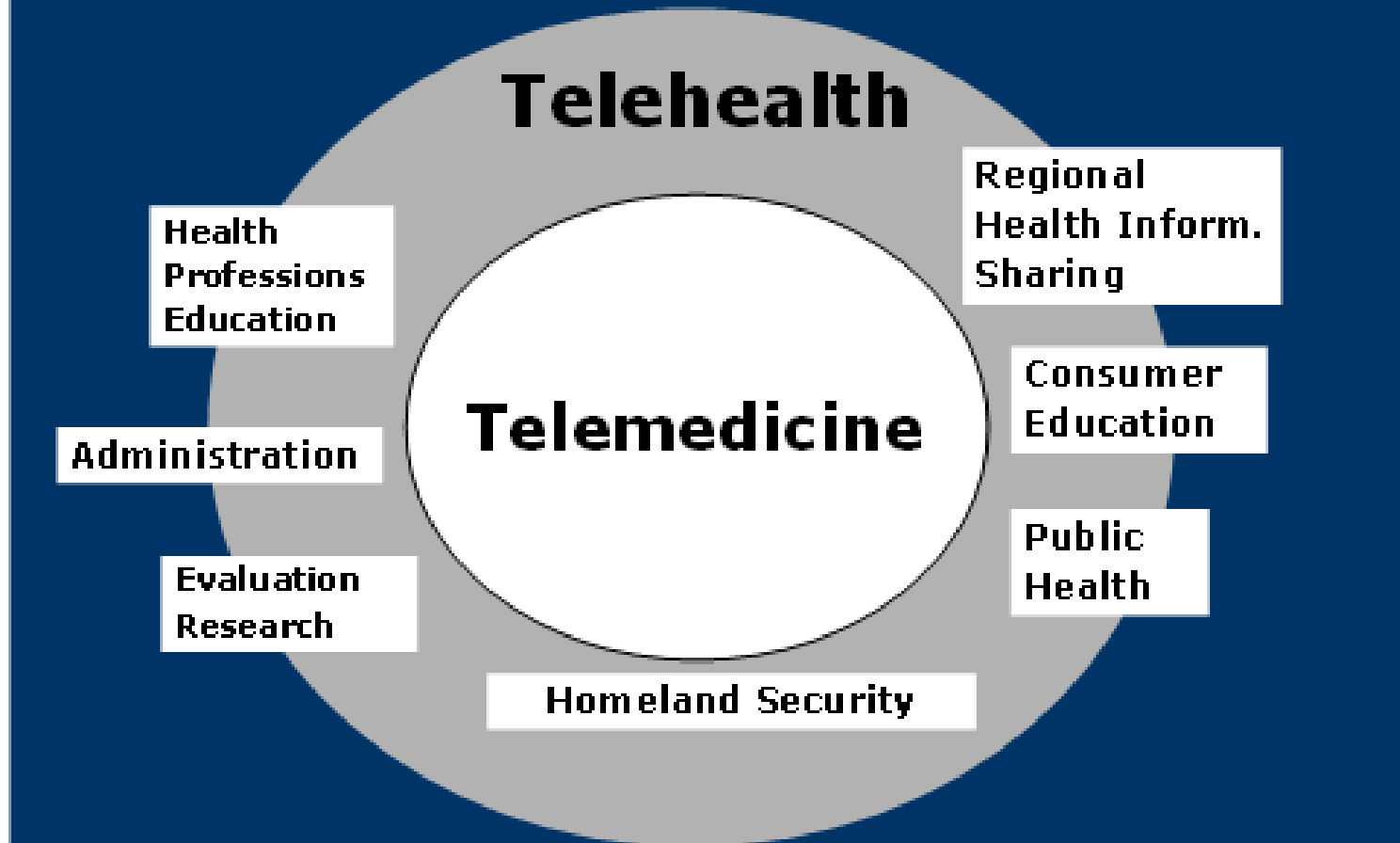
To advance the use of telehealth technologies for improving access and quality of health care services for rural and underserved communities.

Serves as the operational focal point for coordinating and advancing the use of telehealth technologies in HRSA.

# Telehealth Milestones



# Telehealth vs. Telemedicine



# OAT's Grant Programs

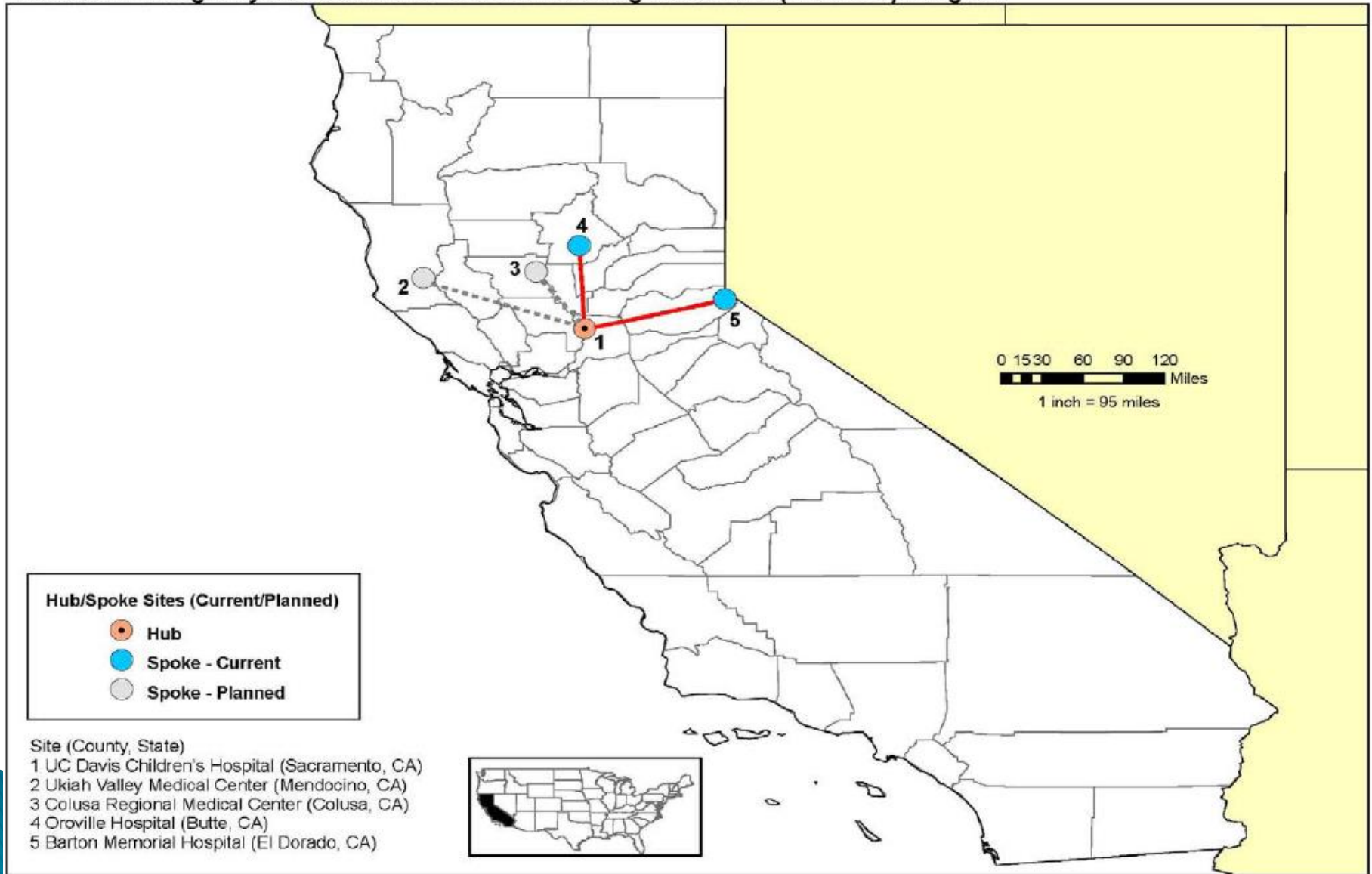
- Telehealth Network Grant Program (TNGP) = \$5M / 20 Recipients
- **\*\*\* NEW\*\*\* Rural Child Poverty Telehealth Network Grant Program (RCP-TNGP) = \$1.3M / 4 Recipients**
- Telehealth Resource Centers = \$5M / 12 Recipients
- Evidence Based Tele-Emergency Network Grant Program (EB TNGP) = \$2.3M / 6 Recipients
- Flex Rural Veterans Healthcare Access Program (RVHAP) = \$900M\* / 3 Recipients
- Licensure Portability Grant Program (LPGP) = \$500K / 2 Recipients

# Telehealth Network Grant Program (TNGP)

University of California, Davis (FY 13-15)

Pediatric Emergency Assistance for Newborns using Telehealth (PEANUT) Program

CA

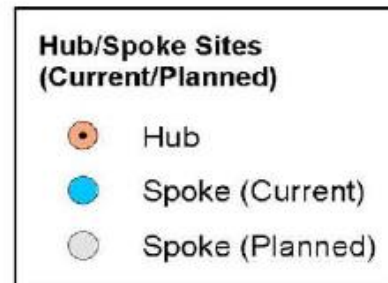
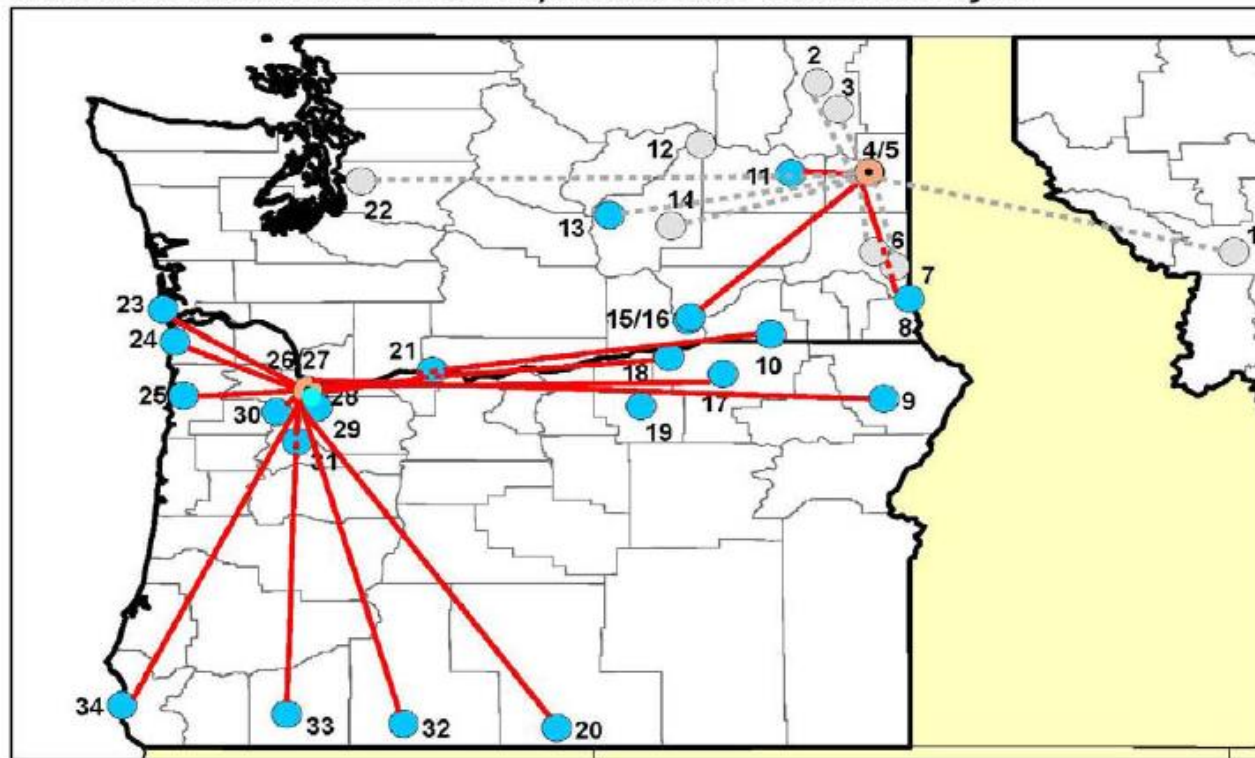


# Telehealth Network Grant Program (TNGP)

Providence Health & Services (FY12-15)

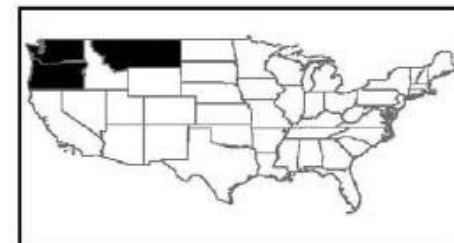
Northwest Telestroke Network Expansion and Evaluation Project

MT, OR, WA



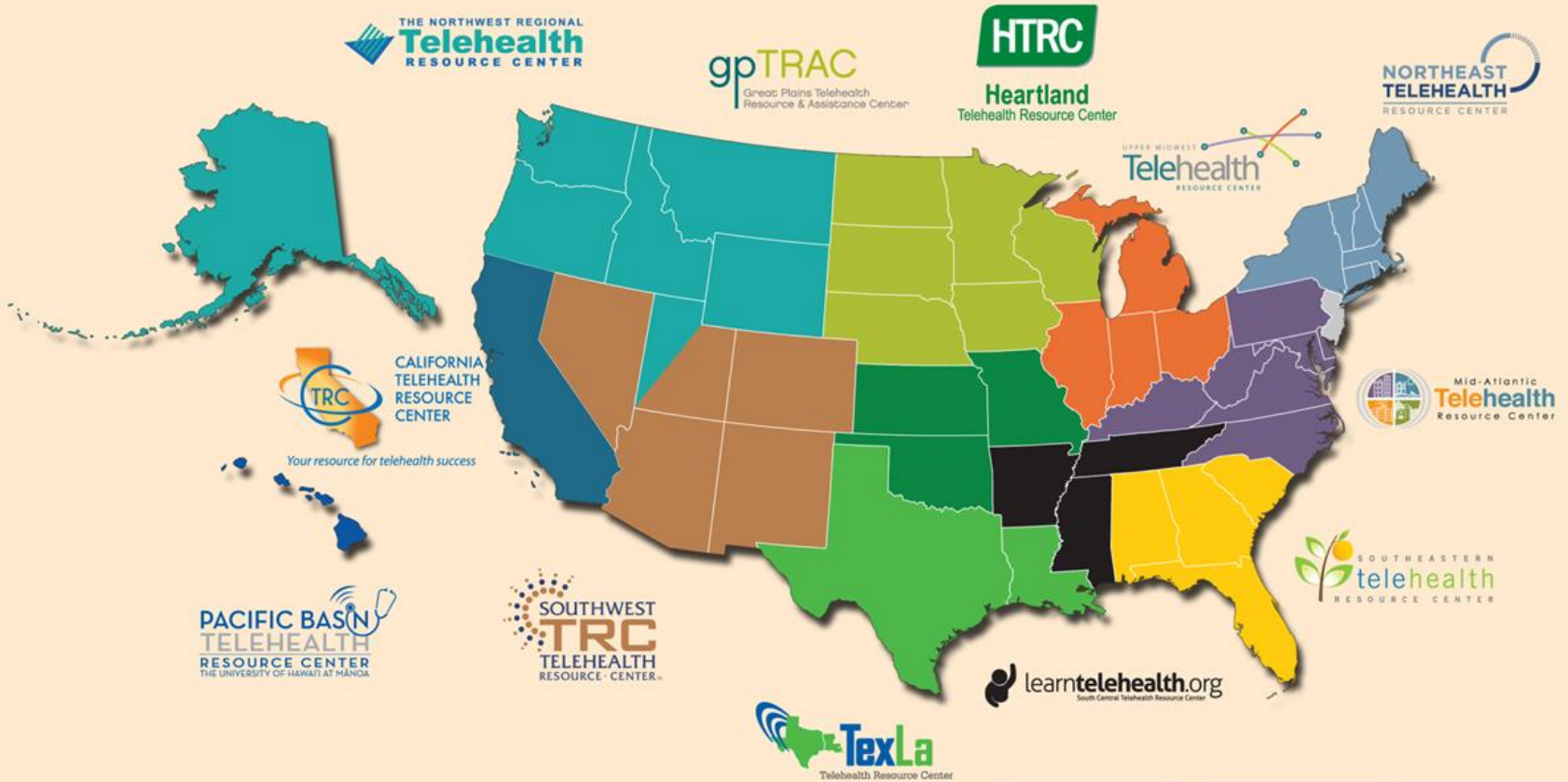
**Sites (County, State)**

- |   |   |  |
|---|---|--|
| 1 Providence St. Patrick Hospital (Missoula, MT)            | 18 Lourdes Medical Center (Franklin, WA)                      | 31 Silverton Hospital (Marion, OR)                 |
| 2 Providence Mount Carmel Hospital (Stevens, WA)            | 17 St. Anthony Hospital (Umatilla, OR)                        | 32 Sky Lakes Medical Center (Klamath, OR)          |
| 3 Providence St. Joseph's Hospital – Chewelah (Stevens, WA) | 18 Good Shepherd Medical Center (Umatilla, OR)                | 33 Providence Medford Medical Center (Jackson, OR) |
| 4 Providence Holy Family Hospital (Spokane, WA)             | 19 Pioneer Memorial (Morrow, OR)                              | 34 Curry General Hospital (Curry, OR)              |
| 5 Providence Sacred Heart Medical Center (Spokane, WA)      | 20 Lake Health District Hospital (Lake, OR)                   |  |
| 6 Whitman Hospital (Whitman, WA)                            | 21 Providence Hood River Memorial Hospital (Hood River, OR)   |  |
| 7 Pullman Regional Hospital (Whitman, WA)                   | 22 Newport Hospital (Pend Oreille, WA)                        |  |
| 8 Tri-State Memorial Hospital (Asotin, WA)                  | 23 Ocean Beach Hospital (Pacific, WA)                         |  |
| 9 Wallowa Memorial Hospital (Wallowa, OR)                   | 24 Providence Seaside Hospital (Clatsop, OR)                  |  |
| 10 Providence St. Mary's Medical Center (Walla Walla, WA)   | 25 Tillamook Regional Medical Center (Tillamook, OR)          |  |
| 11 Lincoln Hospital (Lincoln, WA)                           | 26 Providence Portland Medical Center (Multnomah, OR)         |  |
| 12 Coulee Medical Center (Grant, WA)                        | 27 Providence St. Vincent's Medical Center (Washington, OR)   |  |
| 13 Quincy Valley Medical Center (Grant, WA)                 | 28 Providence Milwaukie Hospital (Clackamas, OR)              |  |
| 14 Samaritan Hospital (Grant, WA)                           | 29 Providence Willamette Falls Medical Center (Clackamas, OR) |  |
| 15 Kennewick General Hospital (Benton, WA)                  | 30 Providence Newberg Hospital (Yamhill, OR)                  |  |





# TelehealthResourceCenters.org



**TTAC**  
TelehealthTechnology.org  
National Telehealth Technology Assessment Resource Center

**Center for Connected Health Policy**



NRTRC	gpTRAC	NETRC
CTRC	HTRC	UMTRC
SWTRC	SCTRC	MATRC
PBTRC	TexLa	SETRC

2 National Resource Centers

12 Regional Resource Centers

# OAT Activities

## “*FedTel*” - Cross Federal Workgroup on Telehealth

- Shared website
- Six subcommittees
- Short-term and long-term goals
- 26 agencies/departments





# Contact

***Carlos Mena***

Office for the Advancement of Telehealth  
Federal Office of Rural Health Policy, HRSA

[cmena@hrsa.gov](mailto:cmena@hrsa.gov)

301-443-3198

