



Your voice. Louder.
**2015 State Office of Rural Health
Orientation**
October 8, 2015

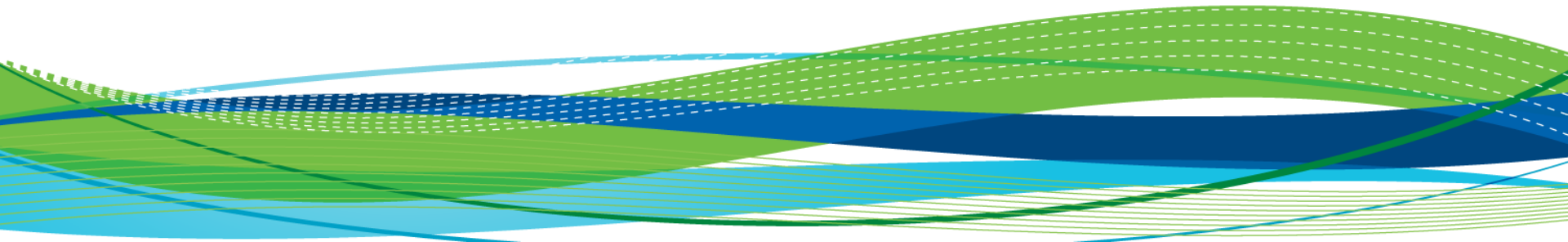
David Secor,
Project Coordinator, Program Services
Laura Hudson, MPA
Manager, Program Services & Contracting

History

**Founded in 1978 as the National Rural
Primary Care Association.**

Celebrated 35th Anniversary in 2012.

**Offices in Leawood, Kansas and
Washington, DC**

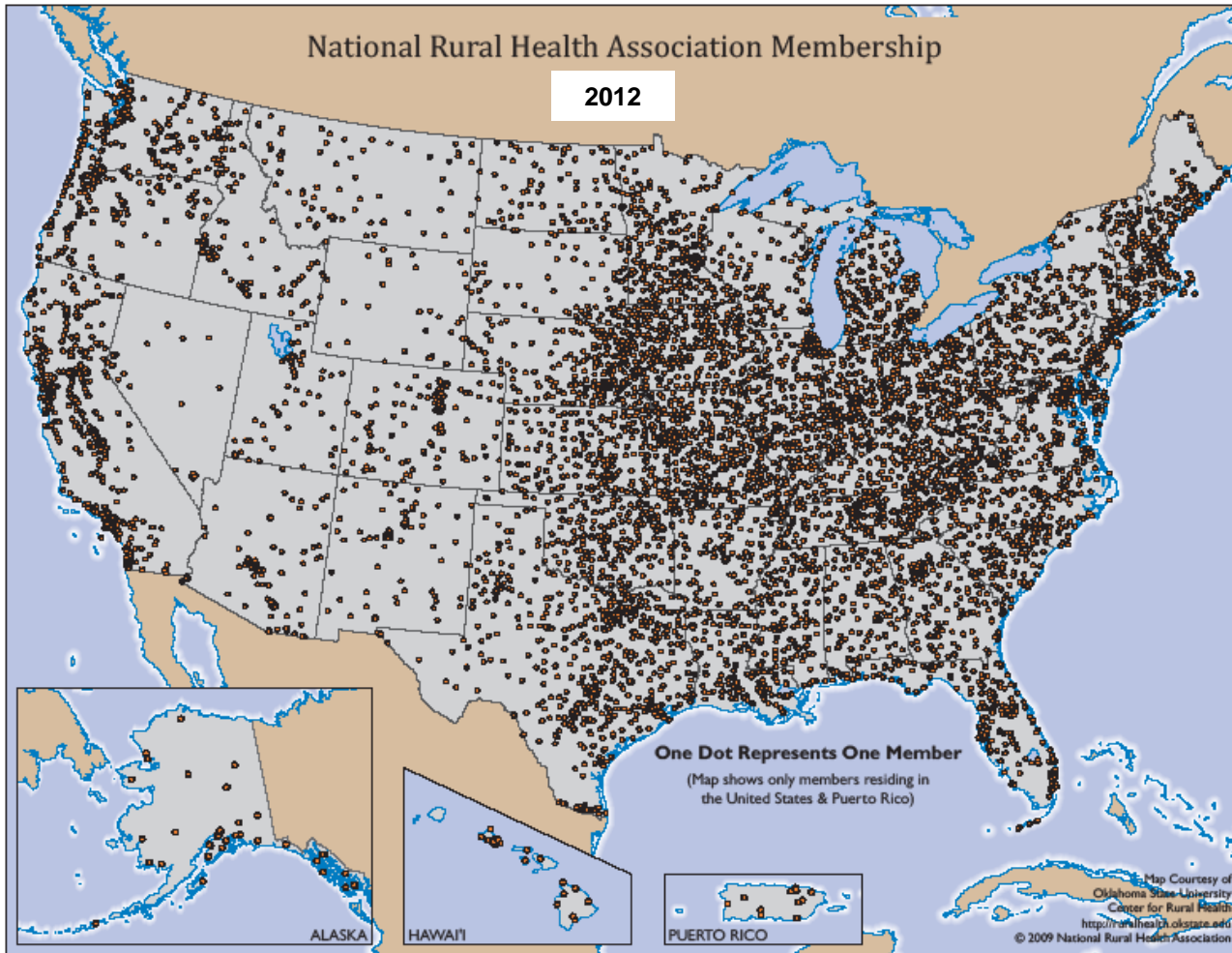


Who Are We?

- *The voice for rural health care.*
- **A non-partisan, non-profit membership driven organization with over 21,000 members.**
- **A source of information for policymakers and NRHA members.**
- **A trusted resource for rural stakeholders.**



Your voice. Louder.

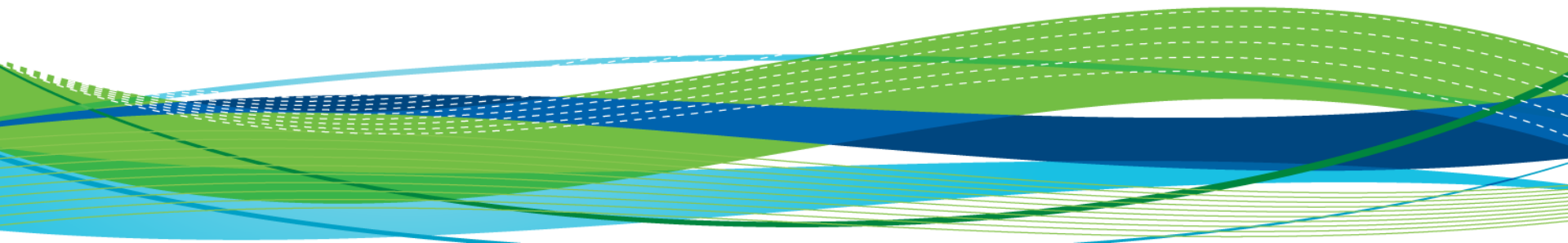




Your voice. Louder.

The NRHA Mission

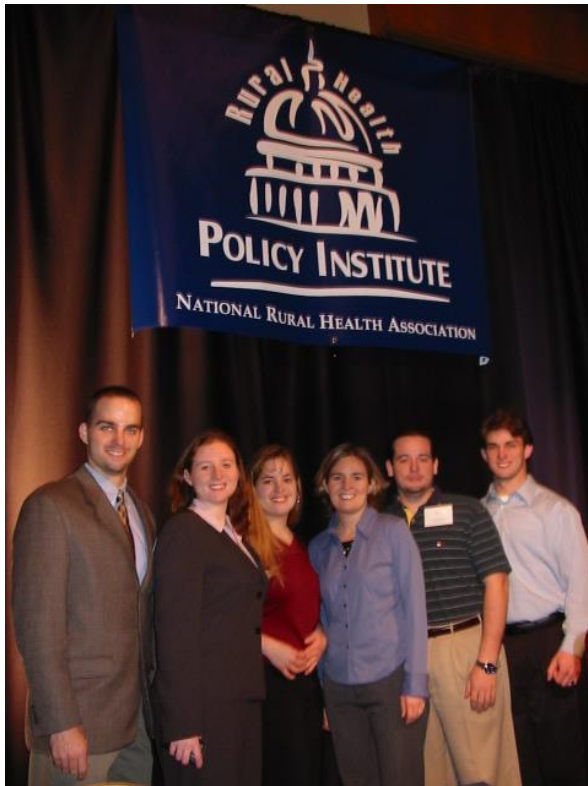
The National Rural Health Association's mission is to provide *leadership* on rural health issues.





Your voice. Louder.

Mission Achieved Through:



- Advocacy
- Communications
- Education
- Research

The NRHA Offers...

Advocacy and Policy Development

- Legislative development, strategy & tracking
- Action Alerts
- Information Alerts
- Congressional testimony
- Appropriations tracking
- Comments on regulations
- Policy briefs and papers





Your voice. Louder.

The NRHA Offers...

Communications and Information Access:

- Weekly E-News
- Quarterly publication: *Rural Roads*
- Journal of Rural Health
- Other publications
- Policy experts
- Organization linkages
- NRHAConnect
- Rural Health Blog

Website:

www.RuralHealthWeb.org



The NRHA Offers...

Educational Opportunities:

- **Policy Institute: February 2016, Washington, DC**
- **Health Equity Conference: May 2016, Minneapolis, MN**
- **Rural Medical Educators: May 2016, Minneapolis, MN**
- **39th Annual Conference: May 2016, Minneapolis, MN**
- **SRHA Leadership Conference: July 2016, Oakland, CA**
- **Quality & Clinical Conference: July 2016, Oakland, CA**
- **Rural Health Clinic/Critical Access Hospital:
October 2015, Kansas City, MO**

The NRHA Offers...

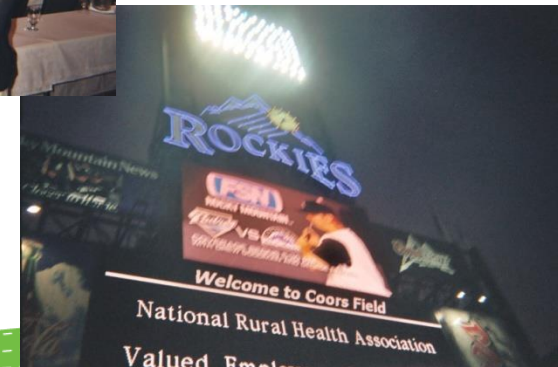
Leadership Opportunities:

- Rural Health Fellows Program
- Constituency Groups, Issue Groups
- Develop papers for review by Rural Health Congress
- Provide issue expertise to NRHA staff

The NRHA Offers...

Networking Opportunities

- Sharing of information, best practices, experiences
- Innovative ideas
- Research
- Build contacts among peers

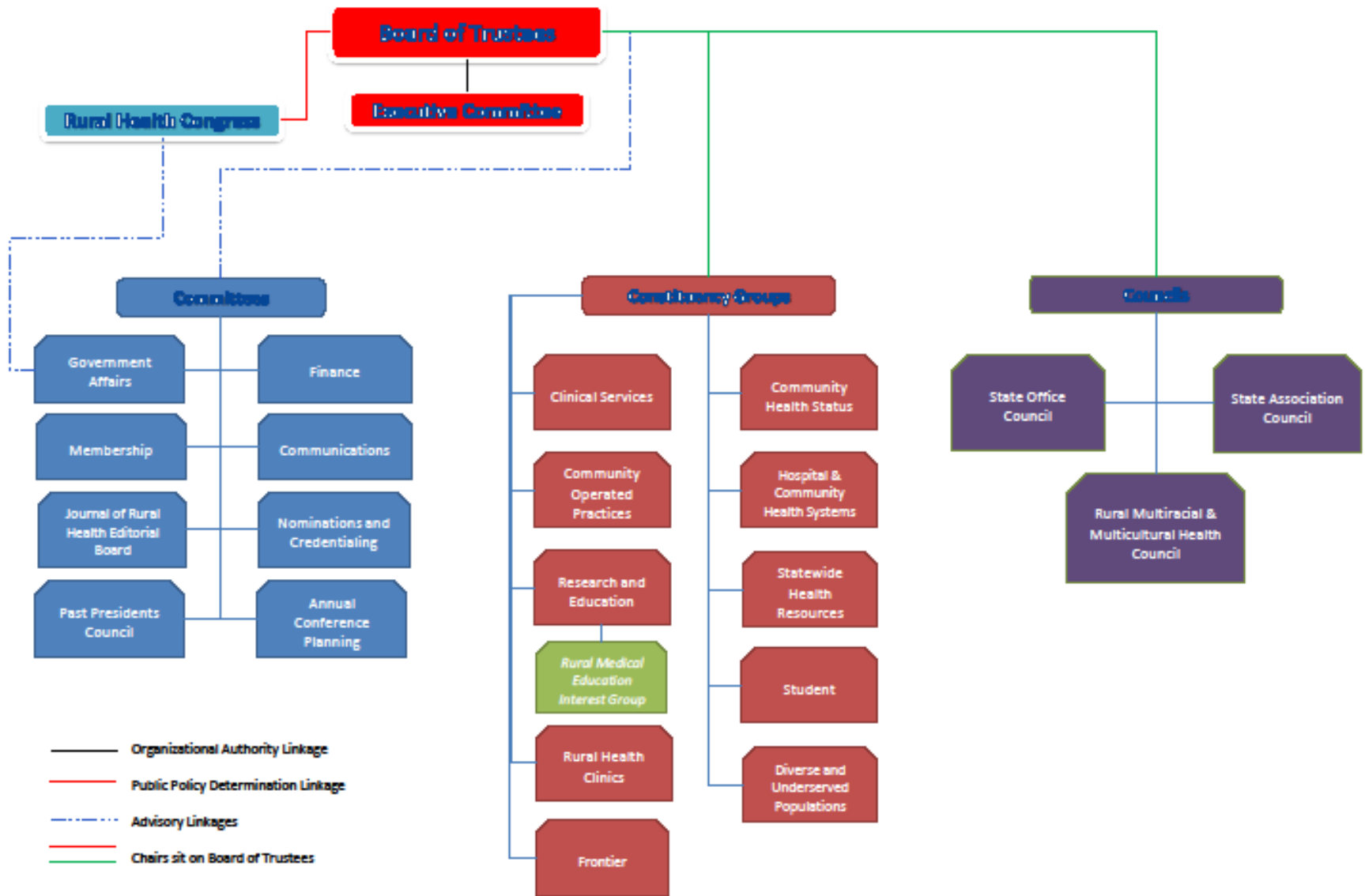


Organizational Structure



- Board of Trustees
- Rural Health Congress
- Government Affairs Committee
- Constituency Groups

National Rural Health Association





Your voice. Louder.

The Policy Board and the Government Affairs Committee Rural Health Congress

The Rural Health Congress is the policy-making body of the National Rural Health Association. Includes representatives from the constituency groups, State Association Council, State Office Council, and the Association's officers. The Rural Health Congress determines the association's positions on public policy.

Government Affairs Committee

The NRHA's Government Affairs Committee works with the NRHA's Government Affairs staff to develop the association's legislative agenda. The committee develops and implements strategies to ensure that the association's public policies and government affairs activities are fully addressed and communicated.

Constituency Groups and Councils

- **Clinical Services:** Members interested in clinical issues, including proprietary and non-proprietary practices.
- **Federally Qualified Health Centers:** Members affiliated with a primary care practice operated and governed by a community board of directors, such as a community health center.
- **Frontier:** Diverse membership (clinicians, researchers, statewide organizations) united because they work or live in sparsely populated areas.
- **Hospitals & Community Health Systems:** Rural hospitals or hospitals with significant interest in rural areas.
- **Public Health:** Members affiliated with this group are your public health experts and others interested in community and local health

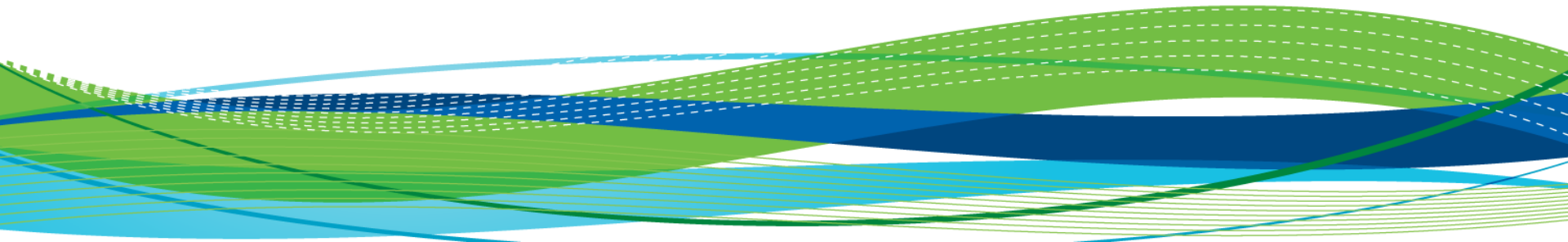
Constituency Groups and Councils

- **Research and Education:** Practitioners and scientists located at academic medical centers as well as persons involved in health professions education in rural communities.
- **Rural Health Clinics**
- **Statewide Health Resources:** Members interested in building or strengthening statewide rural health care systems.
- **Student:** Members who are full-time students.
- **Health Equity Council**
- **State Office Council:** Members from State Offices of Rural Health
- **State Association Council:** Members representing State Rural Health Associations

Projects, Programs, and Initiatives



- Leadership Programs
- Public Health Initiatives
- Rural workforce development projects
- Technical Assistance and collaboration programs





Your voice. Louder.

Rural Health Fellows Program

- The Rural Health Fellows Program (RHF) is a year long, intensive program that will develop leaders who can articulate a clear and compelling vision for rural America.

- Fellows will gain valuable insights and build critical skills in three primary domains:
 - 1) Personal, Team, and Strategic leadership;
 - 2) Health policy analysis and advocacy;
 - 3) National Rural Health Association governance and structure.

NRHA Border Health Initiative



- Initial meeting in Tucson, AZ
June 2008
- Second meeting in El Paso, TX
February 2009
- Third meeting in San Diego, CA
February 2010
- Fourth meeting in Austin, TX
May 2011
- Fifth meeting in El Paso, TX
June 2012
- Sixth meeting in Washington, DC
June 2013
- Seventh meeting in San Diego, CA
August 2014
- Eighth meeting in Washington, DC
June 2015



Community Health Worker Project



Your voice. Louder.

- *Trainings in San Antonio, TX – Dec. 2013*
- *Trainings in El Paso, TX – Aug. 2014*
- *Trainings in San Diego, CA – Aug. 2014*
- *Trainings in McAllen, TX – Jun. 2015*
- Working with federal and private partners to support development of trainings and curriculum for community health workers
- Focus on leadership and communicable diseases
- Have trained over 350 CHWs to date

Rural Training Track Technical Assistance Program



Four Specific Aims

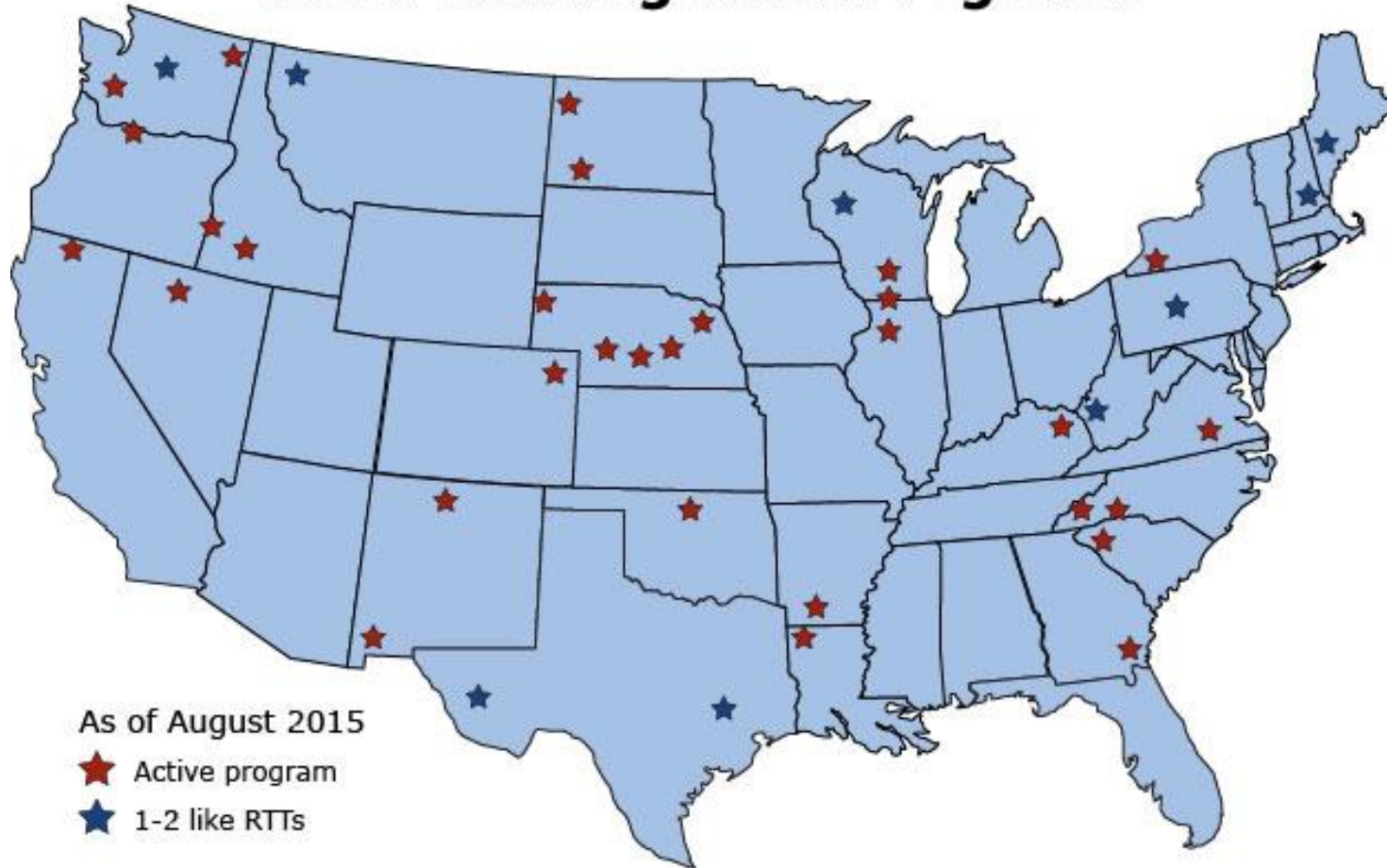
- (1) To support the existing RTTs
- (2) To assist in the development of new RTTs
- (3) To increase the number of students matching to RTTs for residency
- (4) To expand the evidence base of knowledge of these programs and program outcomes by expanding the consortium's current RTT masterfile database.

1-2 Rural Training Track Programs



Your voice. Louder.

Rural Training Track Programs



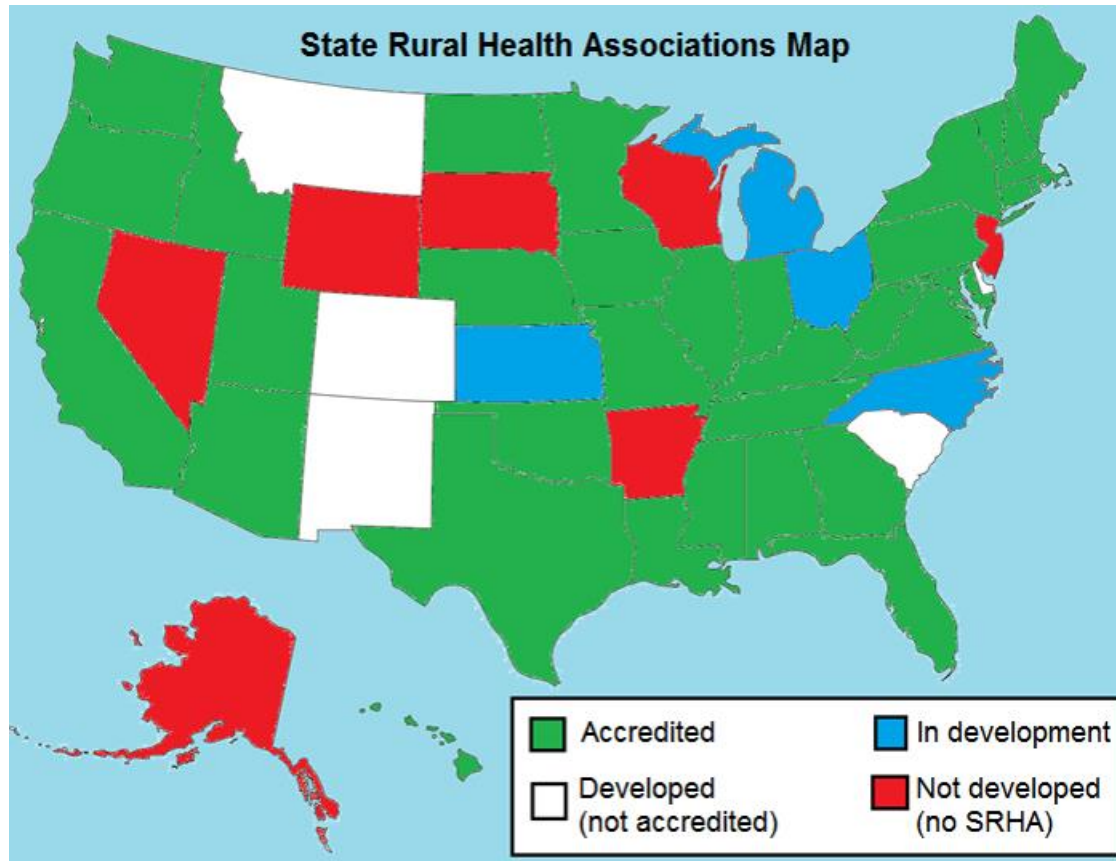


Your voice. Louder.

State Rural Health Associations

- 43 State Rural Health Associations
- Advocacy
- Annual SRHA Leadership Conference
- Technical Assistance Grants

2015 SRHA Map



Questions? Thank you!



David Secor

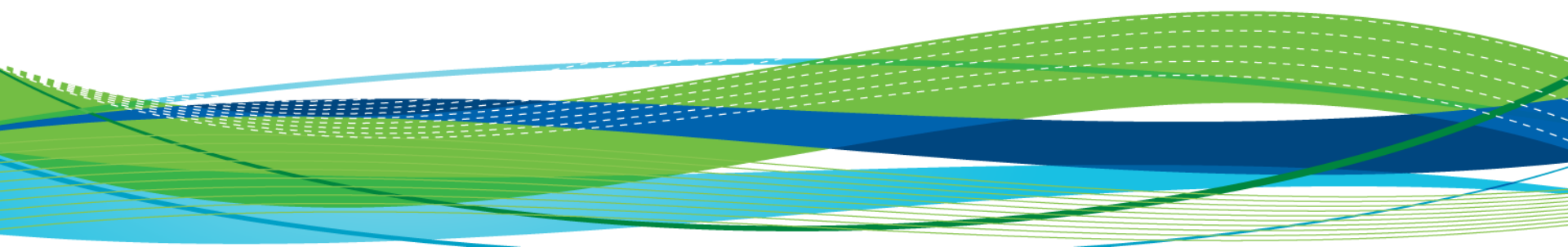
Project Coordinator, Program Services
National Rural Health Association

Secor@nrharural.org / 202-639-0550

Laura B. Hudson, MPA

Manager, Program Services & Contracting
National Rural Health Association

Hudson@NRHArural.org / 202-639-0550



Resources



[NRHA Website](#)

[NRHA Connect](#)

[Rural Roads Online](#)

[NRHA Official Policy Positions](#)

[SRHA Contacts Page](#)

[RTT TA Student Site](#)

[RTT TA Site](#)

